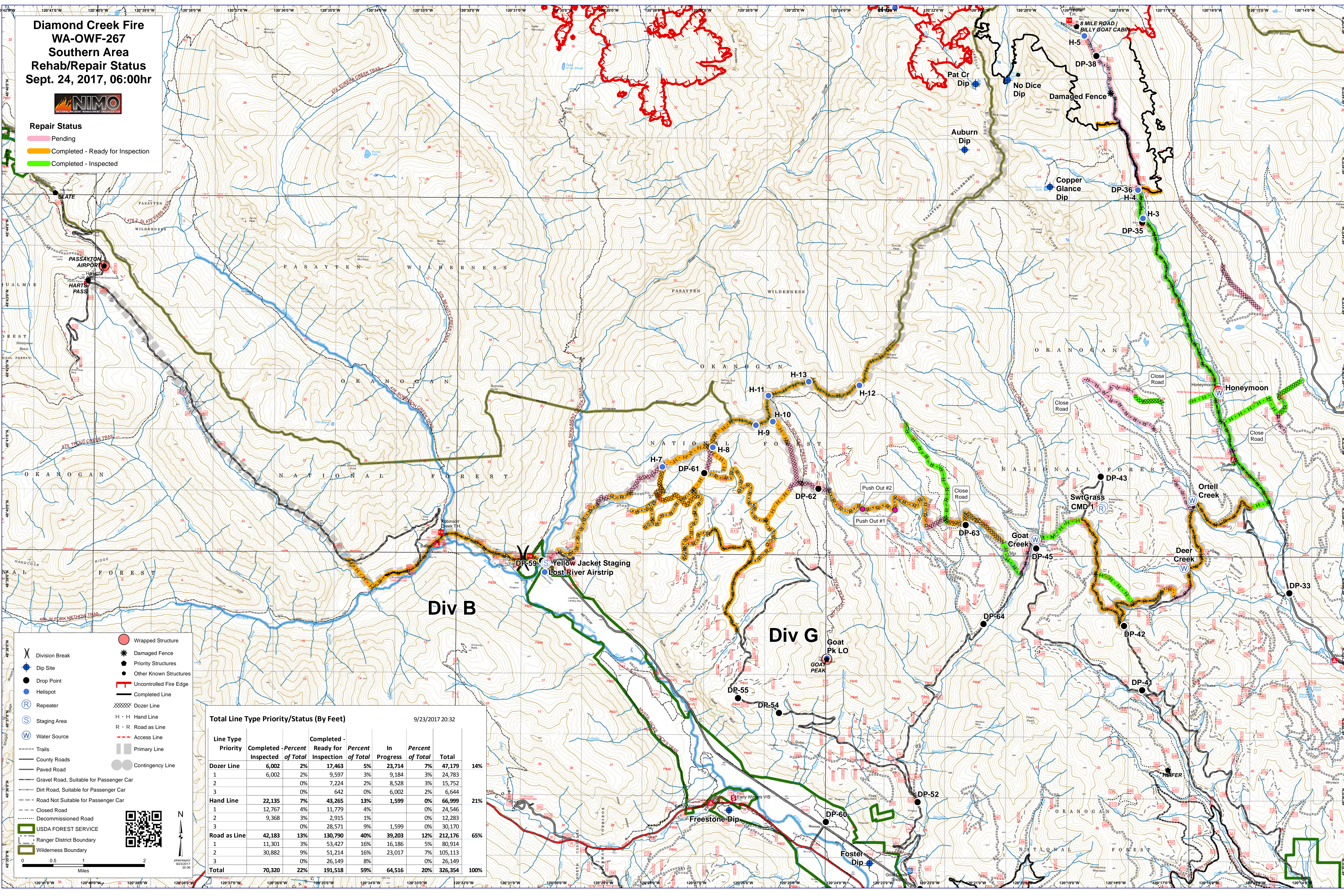


**Diamond Creek Fire
WA-OWF-267
Southern Area
Rehab/Repair Status
Sept. 24, 2017, 06:00hr**



Repair Status

- Pending
- Completed - Ready for Inspection
- Completed - Inspected



- Division Break
- Dip Site
- Drop Point
- Helispot
- Repeater
- Staging Area
- Water Source
- Trails
- County Roads
- Paved Road
- Gravel Road, Suitable for Passenger Car
- Dirt Road, Suitable for Passenger Car
- Road Not Suitable for Passenger Car
- Closed Road
- Decommissioned Road
- USDA FOREST SERVICE
- Ranger District Boundary
- Wilderness Boundary
- Wrapped Structure
- Damaged Fence
- Priority Structures
- Other Known Structures
- Uncontrolled Fire Edge
- Completed Line
- Dozer Line
- H - H Hand Line
- R - R Road as Line
- Access Line
- Primary Line
- Contingency Line

Total Line Type Priority/Status (By Feet) 9/23/2017 20:32

Line Type	Priority	Completed - Inspected	Percent of Total	Completed - Ready for Inspection	Percent of Total	In Progress	Percent of Total	Total	
Dozer Line	1	6,002	2%	17,463	5%	23,714	7%	47,179	14%
	2	6,002	2%	9,597	3%	9,184	3%	24,783	
	3		0%	7,224	2%	8,528	3%	15,752	
Hand Line	1	22,135	7%	43,265	13%	1,599	0%	66,999	21%
	2	12,767	4%	11,779	4%	0	0%	24,546	
	3	9,368	3%	2,915	1%	0	0%	12,283	
Road as Line	1		0%	28,571	9%	1,599	0%	30,170	
	2	42,183	13%	130,790	40%	39,203	12%	212,176	65%
	3	11,301	3%	53,427	16%	16,186	5%	80,914	
Total	1	30,882	9%	51,214	16%	23,017	7%	105,113	
	2		0%	26,149	8%	0	0%	26,149	
	3	70,320	22%	191,518	59%	64,516	20%	326,354	100%



0 0.5 1 2 Miles
 9/23/2017 20:36
 N