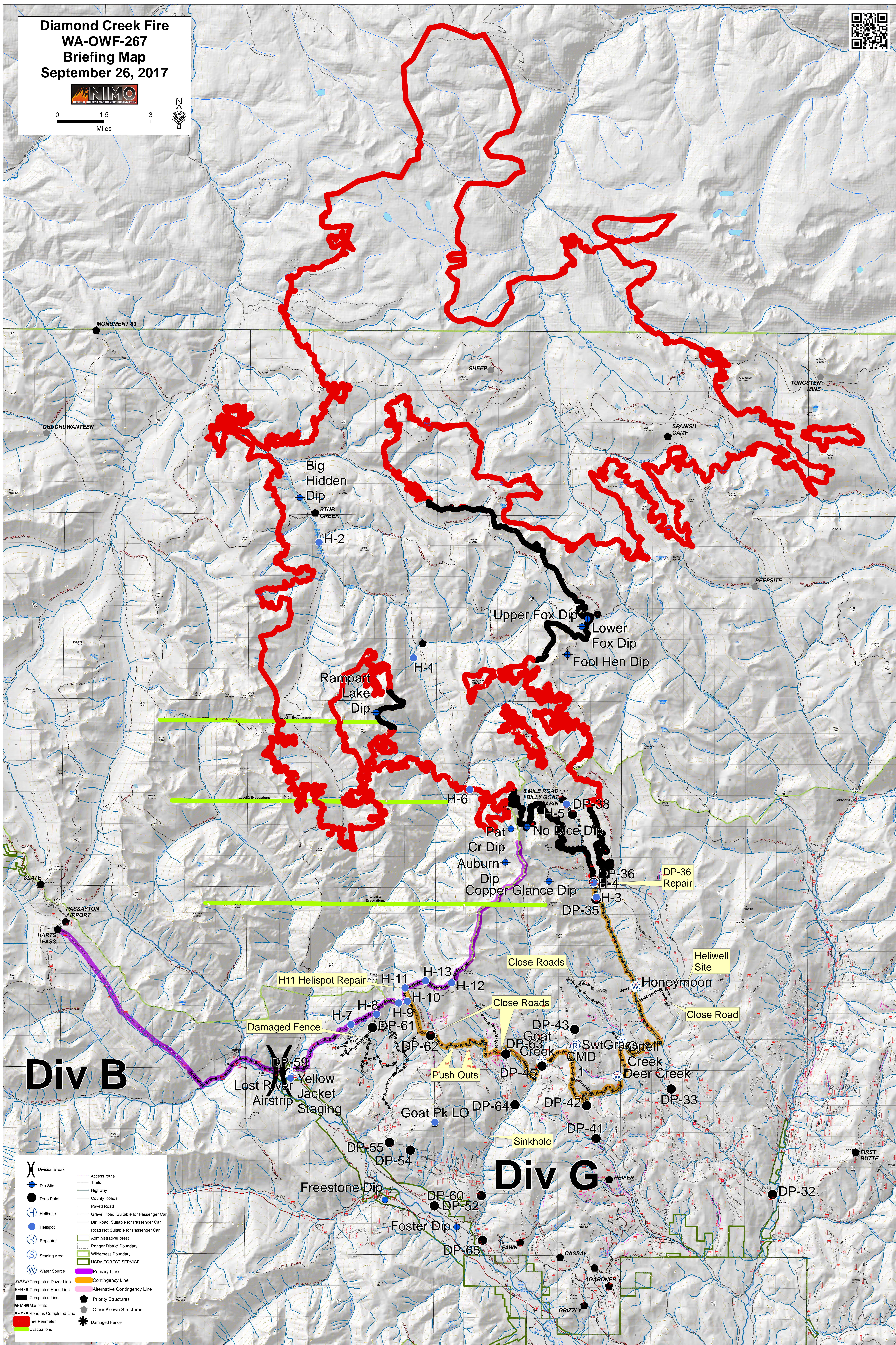
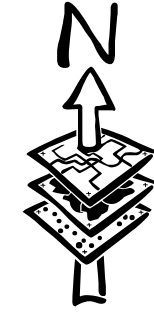
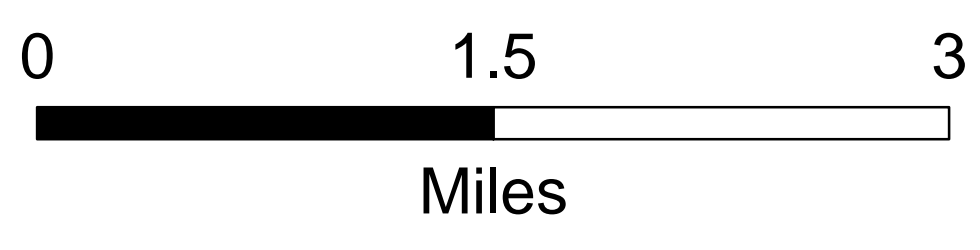


**Diamond Creek Fire
WA-OWF-267
Briefing Map
September 26, 2017**



Div B

Div G

- | | |
|------------------------------|---|
| (X) Division Break | Access route |
| ● Dip Site | Trails |
| ● Drop Point | Highway |
| (H) Helibase | County Roads |
| (H) Helispot | Paved Road |
| (R) Repeater | Gravel Road, Suitable for Passenger Car |
| (S) Staging Area | Dirt Road, Suitable for Passenger Car |
| (W) Water Source | Road Not Suitable for Passenger Car |
| Completed Dozer Line | Administrative Forest |
| H-H-H Completed Hand Line | Ranger District Boundary |
| Completed Line | Wilderness Boundary |
| M-M-M Masticate | USDA FOREST SERVICE |
| R-R-R Road as Completed Line | Primary Line |
| Fire Perimeter | Contingency Line |
| Evacuations | Alternative Contingency Line |
| | Priority Structures |
| | Other Known Structures |
| | Damaged Fence |