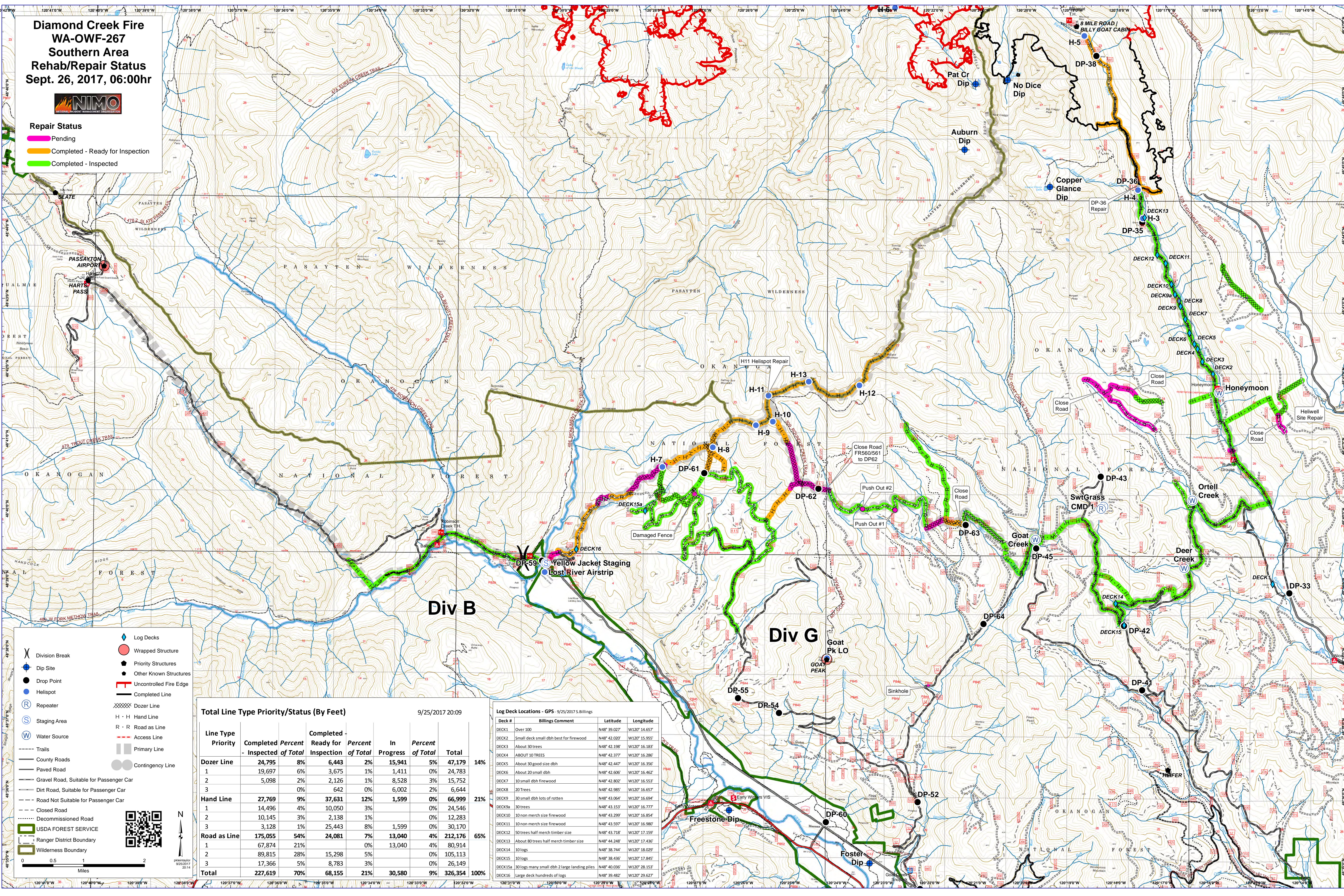


**Diamond Creek Fire  
WA-OWF-267  
Southern Area  
Rehab/Repair Status  
Sept. 26, 2017, 06:00hr**



- Repair Status**
- Pending
  - Completed - Ready for Inspection
  - Completed - Inspected



- Division Break
- Dip Site
- Drop Point
- Helispot
- Repeater
- Staging Area
- Water Source
- Trails
- County Roads
- Paved Road
- Gravel Road, Suitable for Passenger Car
- Dirt Road, Suitable for Passenger Car
- Road Not Suitable for Passenger Car
- Closed Road
- Decommissioned Road
- USDA FOREST SERVICE
- Ranger District Boundary
- Wilderness Boundary
- Log Decks
- Wrapped Structure
- Priority Structures
- Other Known Structures
- Uncontrolled Fire Edge
- Completed Line
- Dozer Line
- H - H Hand Line
- R - R Road as Line
- Access Line
- Primary Line
- Contingency Line

**Total Line Type Priority/Status (By Feet)** 9/25/2017 20:09

Line Type	Priority	Completed	Percent	Completed	Percent	In	Percent	Total
		Inspected	of Total	Ready for Inspection	of Total	Progress	of Total	
<b>Dozer Line</b>		<b>24,795</b>	<b>8%</b>	<b>6,443</b>	<b>2%</b>	<b>15,941</b>	<b>5%</b>	<b>47,179</b>
1		19,697	6%	3,675	1%	1,411	0%	24,783
2		5,098	2%	2,126	1%	8,528	3%	15,752
3		3,128	0%	642	0%	6,002	2%	6,644
<b>Hand Line</b>		<b>27,769</b>	<b>9%</b>	<b>37,631</b>	<b>12%</b>	<b>1,599</b>	<b>0%</b>	<b>66,999</b>
1		14,496	4%	10,050	3%		0%	24,546
2		10,145	3%	2,138	1%		0%	12,283
3		3,128	1%	25,443	8%	1,599	0%	30,170
<b>Road as Line</b>		<b>175,055</b>	<b>54%</b>	<b>24,081</b>	<b>7%</b>	<b>13,040</b>	<b>4%</b>	<b>212,176</b>
1		67,874	21%		0%	13,040	4%	80,914
2		89,815	28%	15,298	5%		0%	105,113
3		17,366	5%	8,783	3%		0%	26,149
<b>Total</b>		<b>227,619</b>	<b>70%</b>	<b>68,155</b>	<b>21%</b>	<b>30,580</b>	<b>9%</b>	<b>326,354</b>

**Log Deck Locations - GPS - 9/25/2017 S. Billings**

Deck #	Billings Comment	Latitude	Longitude
DECK1	Over 100	N48° 39.027'	W120° 14.657'
DECK2	Small deck small dbh best for firewood	N48° 42.020'	W120° 15.955'
DECK3	About 30 trees	N48° 42.198'	W120° 16.183'
DECK4	ABOUT 10 TREES	N48° 42.377'	W120° 16.286'
DECK5	About 30 good size dbh	N48° 42.447'	W120° 16.356'
DECK6	About 20 small dbh	N48° 42.606'	W120° 16.462'
DECK7	10 small dbh firewood	N48° 42.802'	W120° 16.553'
DECK8	20 Trees	N48° 42.985'	W120° 16.657'
DECK9	30 small dbh lots of rotten	N48° 43.064'	W120° 16.694'
DECK9a	30 trees	N48° 43.153'	W120° 16.777'
DECK10	10 non merch size firewood	N48° 43.299'	W120° 16.854'
DECK11	10 non merch size firewood	N48° 43.597'	W120° 16.980'
DECK12	50 trees half merch timber size	N48° 43.718'	W120° 17.159'
DECK13	About 80 trees half merch timber size	N48° 44.248'	W120° 17.436'
DECK14	10 logs	N48° 38.744'	W120° 18.029'
DECK15	10 logs	N48° 38.436'	W120° 17.845'
DECK15a	30 logs many small dbh 2 large landing piles	N48° 40.036'	W120° 18.253'
DECK16	Large deck hundreds of logs	N48° 39.482'	W120° 23.627'



0 0.5 1 2 Miles