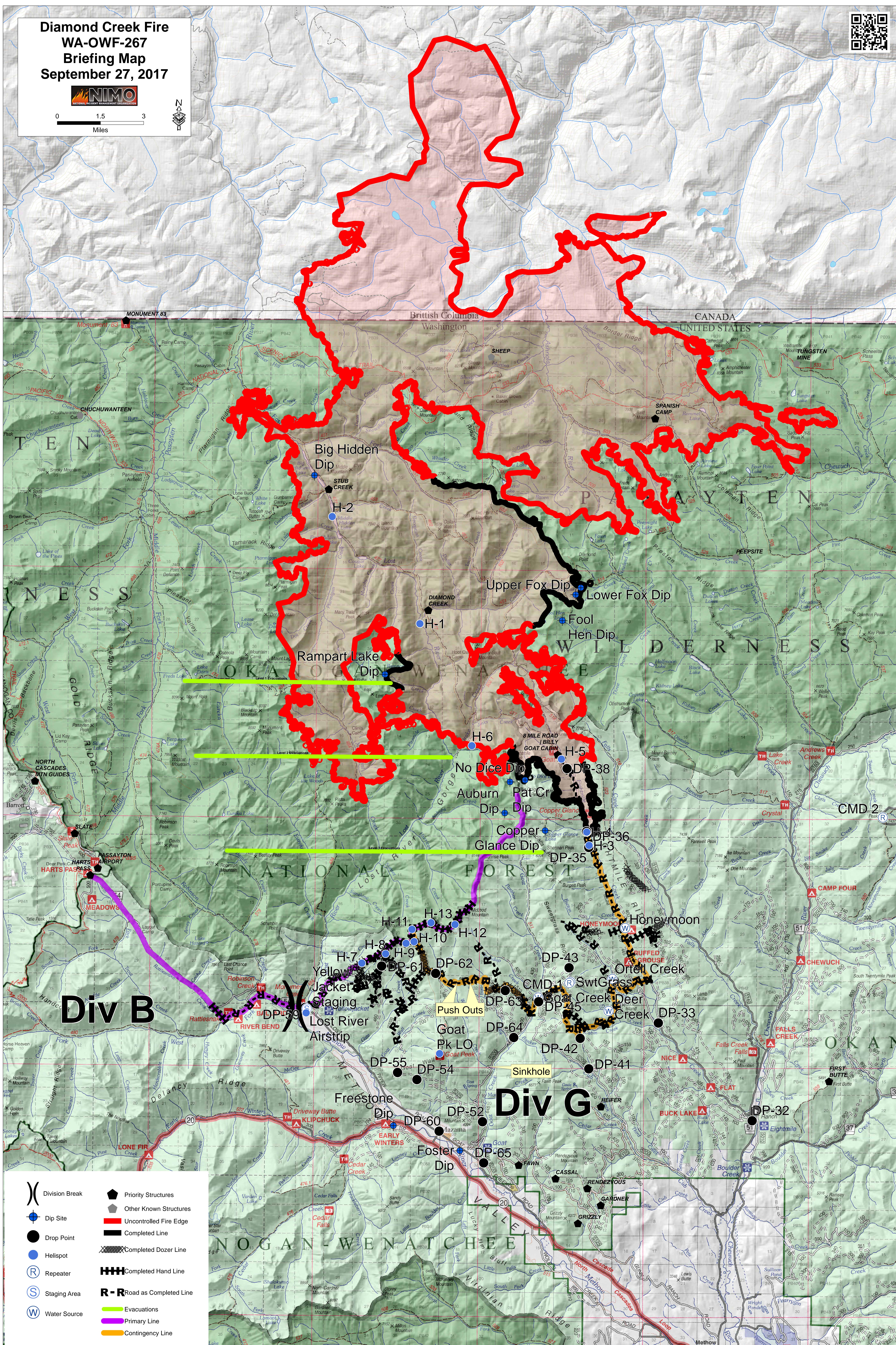
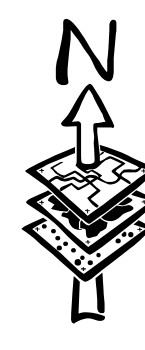


**Diamond Creek Fire  
WA-OWF-267  
Briefing Map  
September 27, 2017**



0 1.5 3  
Miles



**Div B**

**Div G**

- ( ) Division Break
- Dip Site
- Drop Point
- Helispot
- Ⓡ Repeater
- Ⓢ Staging Area
- Ⓦ Water Source
- ◆ Priority Structures
- ◆ Other Known Structures
- ▬ Uncontrolled Fire Edge
- ▬ Completed Line
- ▬ Completed Dozer Line
- ▬ Completed Hand Line
- ▬ Completed Line
- ▬ Evacuations
- ▬ Primary Line
- ▬ Contingency Line