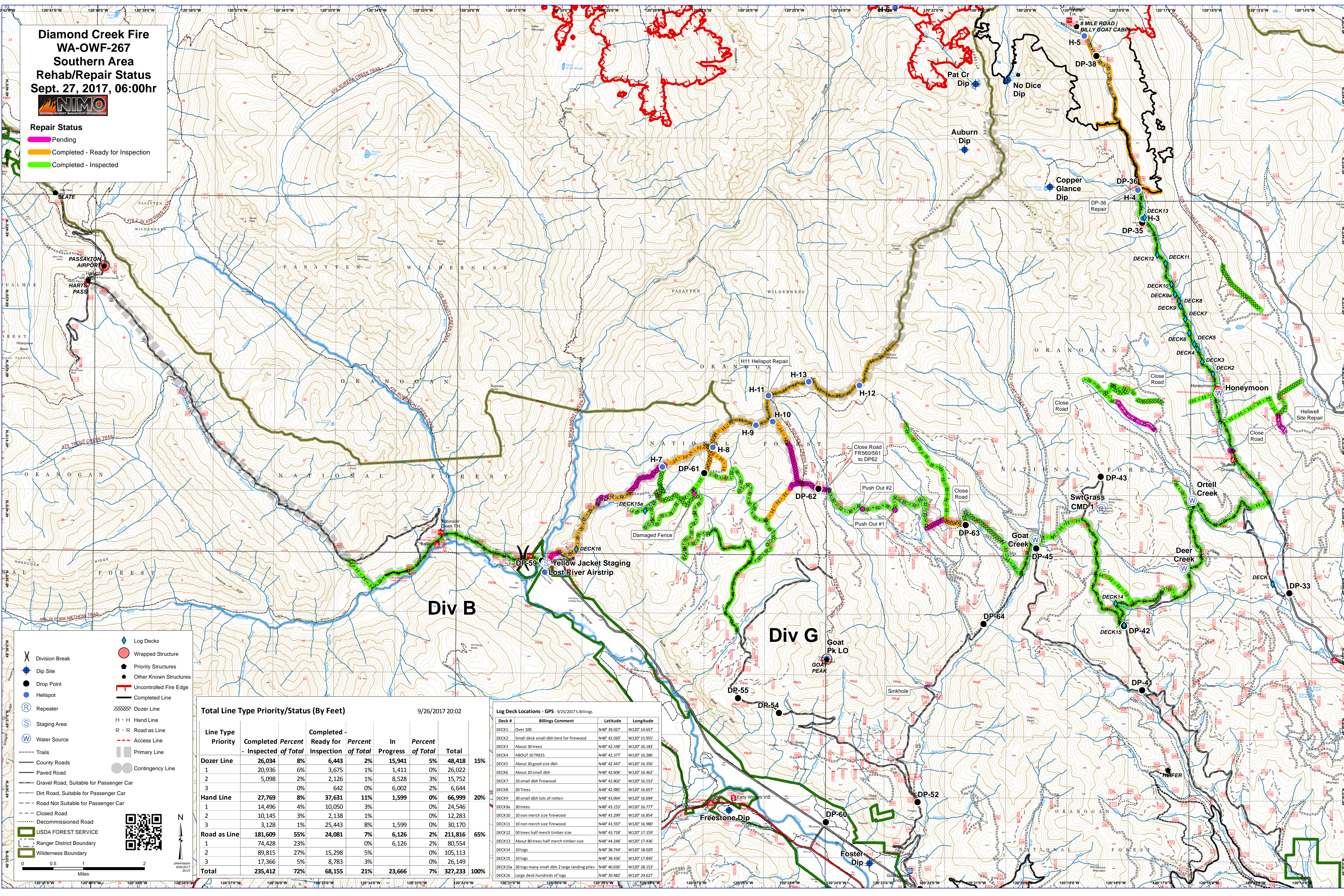


**Diamond Creek Fire
WA-OWF-267
Southern Area
Rehab/Repair Status
Sept. 27, 2017, 06:00hr**



- Repair Status**
- Pending
 - Completed - Ready for Inspection
 - Completed - Inspected



- Division Break
- Dip Site
- Drop Point
- Helispot
- Repeater
- Staging Area
- Water Source
- Trails
- County Roads
- Paved Road
- Gravel Road, Suitable for Passenger Car
- Dirt Road, Suitable for Passenger Car
- Road Not Suitable for Passenger Car
- Closed Road
- Decommissioned Road
- USDA FOREST SERVICE
- Ranger District Boundary
- Wilderness Boundary
- Log Decks
- Wrapped Structure
- Priority Structures
- Other Known Structures
- Uncontrolled Fire Edge
- Completed Line
- Dozer Line
- H - H Hand Line
- R - R Road as Line
- Access Line
- Primary Line
- Contingency Line

Total Line Type Priority/Status (By Feet) 9/26/2017 20:02

| Line Type | Priority | Completed - Inspected | Percent of Total | Completed - Ready for Inspection | Percent of Total | In Progress | Percent of Total | Total |
|---------------------|----------|-----------------------|------------------|----------------------------------|------------------|---------------|------------------|----------------|
| Dozer Line | | 26,034 | 8% | 6,443 | 2% | 15,941 | 5% | 48,418 |
| 1 | | 20,936 | 6% | 3,675 | 1% | 1,411 | 0% | 26,022 |
| 2 | | 5,098 | 2% | 2,126 | 1% | 8,528 | 3% | 15,752 |
| 3 | | | 0% | 642 | 0% | 6,002 | 2% | 6,644 |
| Hand Line | | 27,769 | 8% | 37,631 | 11% | 1,599 | 0% | 66,999 |
| 1 | | 14,496 | 4% | 10,050 | 3% | | 0% | 24,546 |
| 2 | | 10,145 | 3% | 2,138 | 1% | | 0% | 12,283 |
| 3 | | 3,128 | 1% | 25,443 | 8% | 1,599 | 0% | 30,170 |
| Road as Line | | 181,609 | 55% | 24,081 | 7% | 6,126 | 2% | 211,816 |
| 1 | | 74,428 | 23% | | 0% | 6,126 | 2% | 80,554 |
| 2 | | 89,815 | 27% | 15,298 | 5% | | 0% | 105,113 |
| 3 | | 17,366 | 5% | 8,783 | 3% | | 0% | 26,149 |
| Total | | 235,412 | 72% | 68,155 | 21% | 23,666 | 7% | 327,233 |

Log Deck Locations - GPS - 9/25/2017 S. Billings

| Deck # | Billings Comment | Latitude | Longitude |
|---------|--|--------------|---------------|
| DECK1 | Over 100 | N48° 39.027' | W120° 14.657' |
| DECK2 | Small deck small dbh best for firewood | N48° 42.020' | W120° 15.955' |
| DECK3 | About 30 trees | N48° 42.198' | W120° 16.183' |
| DECK4 | ABOUT 10 TREES | N48° 42.377' | W120° 16.286' |
| DECK5 | About 30 good size dbh | N48° 42.447' | W120° 16.356' |
| DECK6 | About 20 small dbh | N48° 42.606' | W120° 16.462' |
| DECK7 | 10 small dbh firewood | N48° 42.802' | W120° 16.553' |
| DECK8 | 20 Trees | N48° 42.985' | W120° 16.657' |
| DECK9 | 30 small dbh lots of rotten | N48° 43.064' | W120° 16.694' |
| DECK9a | 30 trees | N48° 43.153' | W120° 16.777' |
| DECK10 | 10 non merch size firewood | N48° 43.299' | W120° 16.854' |
| DECK11 | 10 non merch size firewood | N48° 43.597' | W120° 16.980' |
| DECK12 | 50 trees half merch timber size | N48° 43.718' | W120° 17.159' |
| DECK13 | About 80 trees half merch timber size | N48° 44.248' | W120° 17.436' |
| DECK14 | 10 logs | N48° 38.744' | W120° 18.029' |
| DECK15 | 10 logs | N48° 38.436' | W120° 17.845' |
| DECK15a | 30 logs many small dbh 2 large landing piles | N48° 40.036' | W120° 28.153' |
| DECK16 | Large deck hundreds of logs | N48° 39.482' | W120° 29.627' |