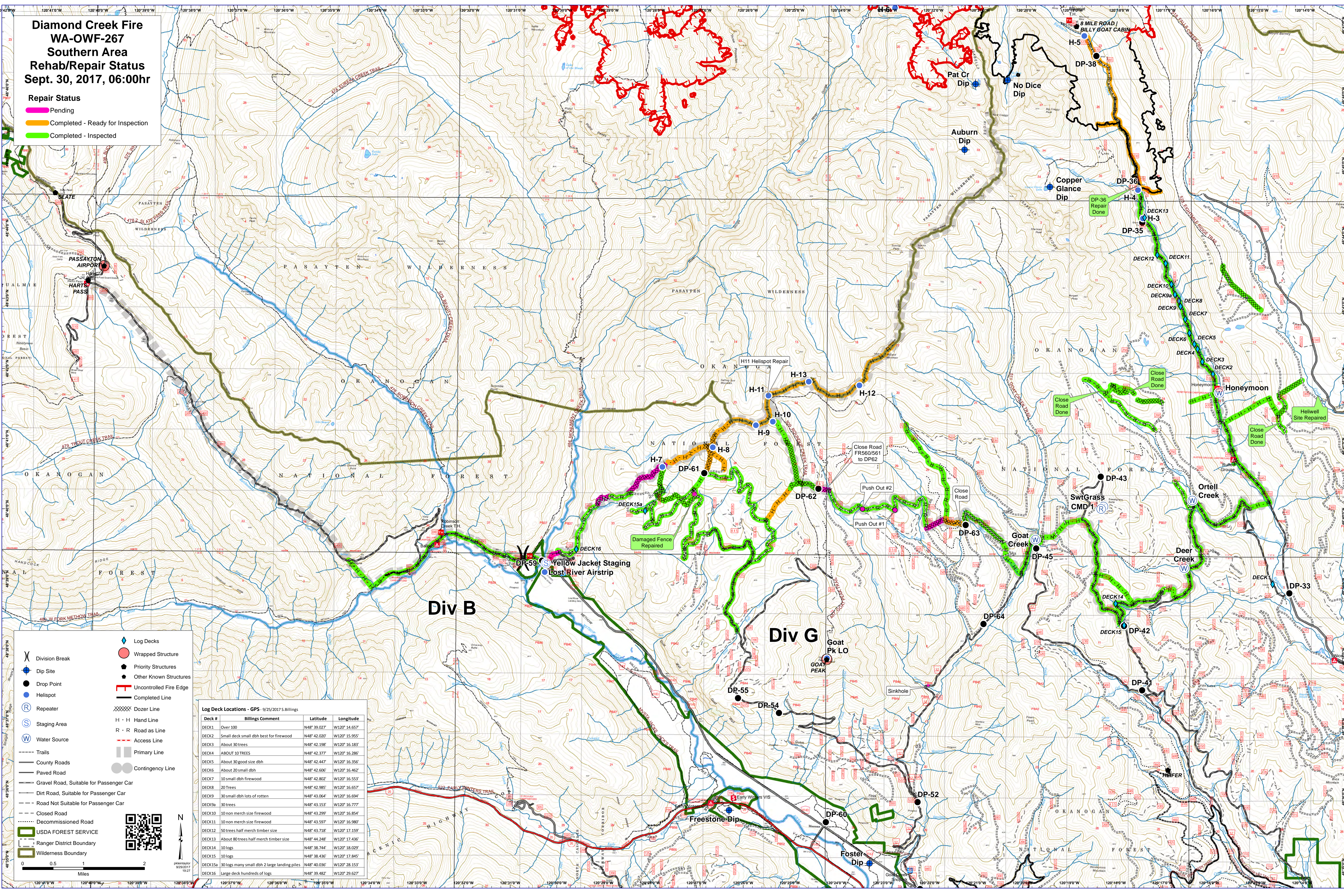


**Diamond Creek Fire
WA-OWF-267
Southern Area
Rehab/Repair Status
Sept. 30, 2017, 06:00hr**

- Repair Status**
- Pending
 - Completed - Ready for Inspection
 - Completed - Inspected



- Division Break
- Dip Site
- Drop Point
- Helispot
- Repeater
- Staging Area
- Water Source
- Trails
- County Roads
- Paved Road
- Dirt Road, Suitable for Passenger Car
- Road Not Suitable for Passenger Car
- Closed Road
- Decommissioned Road
- USDA FOREST SERVICE
- Ranger District Boundary
- Wilderness Boundary
- Log Decks
- Wrapped Structure
- Priority Structures
- Other Known Structures
- Uncontrolled Fire Edge
- Completed Line
- Dozer Line
- H - H Hand Line
- R - R Road as Line
- Access Line
- Primary Line
- Contingency Line

Log Deck Locations - GPS - 9/25/2017 S. Billings

Deck #	Billings Comment	Latitude	Longitude
DECK1	Over 100	N48° 39.027'	W120° 14.657'
DECK2	Small deck small dbh best for firewood	N48° 42.020'	W120° 15.955'
DECK3	About 30 trees	N48° 42.198'	W120° 16.183'
DECK4	ABOUT 10 TREES	N48° 42.377'	W120° 16.286'
DECK5	About 30 good size dbh	N48° 42.447'	W120° 16.356'
DECK6	About 20 small dbh	N48° 42.606'	W120° 16.462'
DECK7	10 small dbh firewood	N48° 42.802'	W120° 16.553'
DECK8	20 Trees	N48° 42.985'	W120° 16.657'
DECK9	30 small dbh lots of rotten	N48° 43.064'	W120° 16.694'
DECK9a	30 trees	N48° 43.153'	W120° 16.777'
DECK10	10 non merch size firewood	N48° 43.299'	W120° 16.854'
DECK11	10 non merch size firewood	N48° 43.597'	W120° 16.987'
DECK12	50 trees half merch timber size	N48° 43.718'	W120° 17.159'
DECK13	About 80 trees half merch timber size	N48° 44.248'	W120° 17.436'
DECK14	10 logs	N48° 38.744'	W120° 18.029'
DECK15	10 logs	N48° 38.436'	W120° 17.845'
DECK15a	30 logs many small dbh 2 large landing piles	N48° 40.036'	W120° 28.153'
DECK16	Large deck hundreds of logs	N48° 39.482'	W120° 29.627'



N
pkmetaylor
9/26/2017
19:27

