

120°29'0"W 120°28'0"W 120°27'0"W 120°26'0"W 120°25'0"W 120°24'0"W 120°23'0"W 120°22'0"W 120°21'0"W 120°20'0"W 120°19'0"W 120°18'0"W 120°17'0"W 120°16'0"W



# Diamond Creek Infrared Map

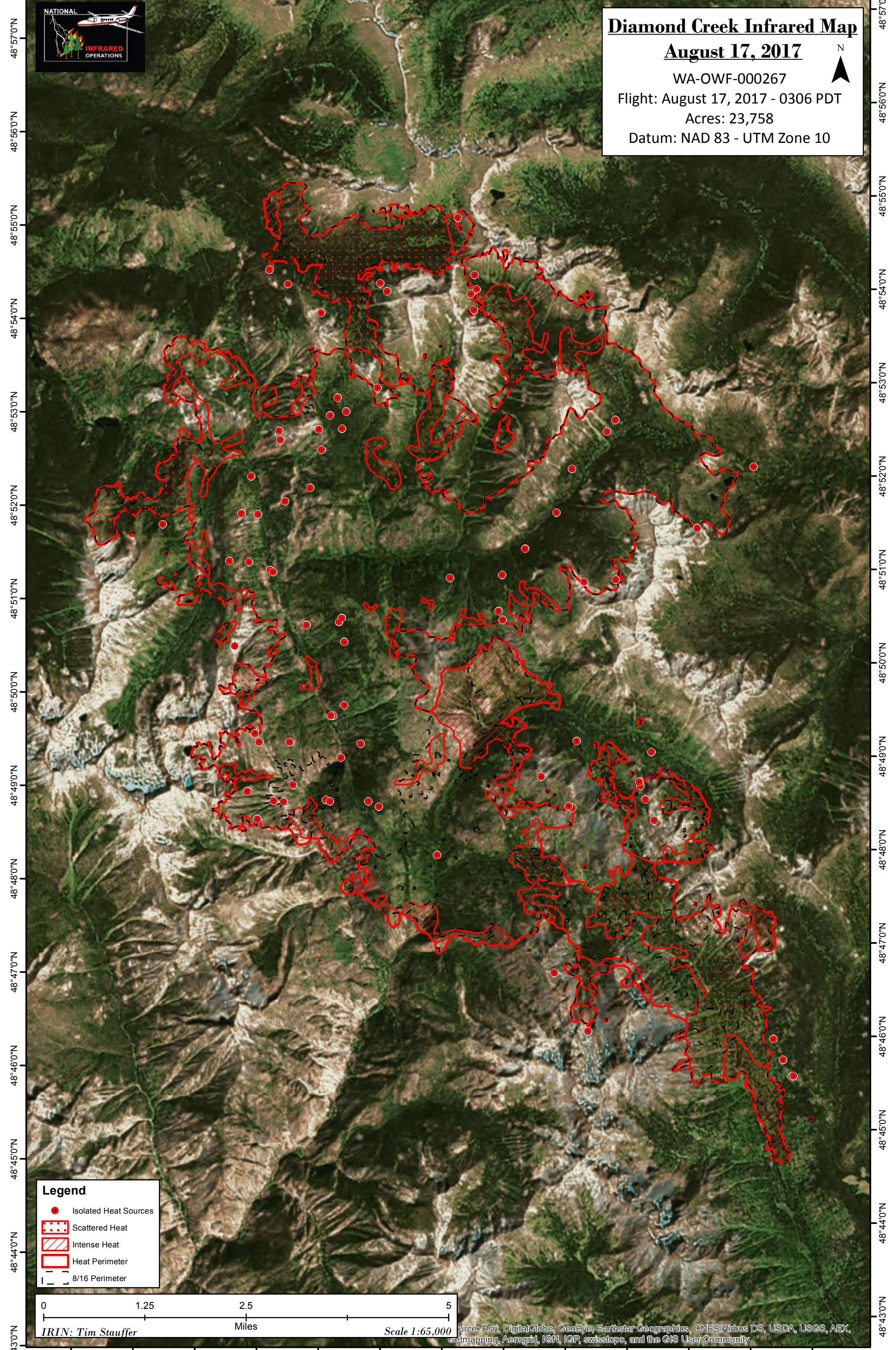
## August 17, 2017

WA-OWF-000267

Flight: August 17, 2017 - 0306 PDT

Acres: 23,758

Datum: NAD 83 - UTM Zone 10

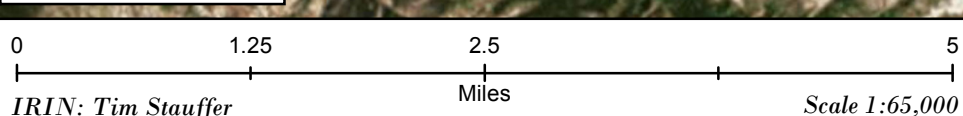


48°57'0"N  
48°56'0"N  
48°55'0"N  
48°54'0"N  
48°53'0"N  
48°52'0"N  
48°51'0"N  
48°50'0"N  
48°49'0"N  
48°48'0"N  
48°47'0"N  
48°46'0"N  
48°45'0"N  
48°44'0"N  
48°43'0"N

48°57'0"N  
48°56'0"N  
48°55'0"N  
48°54'0"N  
48°53'0"N  
48°52'0"N  
48°51'0"N  
48°50'0"N  
48°49'0"N  
48°48'0"N  
48°47'0"N  
48°46'0"N  
48°45'0"N  
48°44'0"N  
48°43'0"N

**Legend**

- Isolated Heat Sources
- Scattered Heat
- Intense Heat
- Heat Perimeter
- 8/16 Perimeter



IRIN: Tim Stauffer Scale 1:65,000 Source: Esri, DigitalGlobe, GeoEye, Earthstar Geographics, CNES/Airbus DS, USDA, USGS, AEX, Getmapping, Aerogrid, IGN, IGP, swisstopo, and the GIS User Community

120°29'0"W 120°28'0"W 120°27'0"W 120°26'0"W 120°25'0"W 120°24'0"W 120°23'0"W 120°22'0"W 120°21'0"W 120°20'0"W 120°19'0"W 120°18'0"W 120°17'0"W