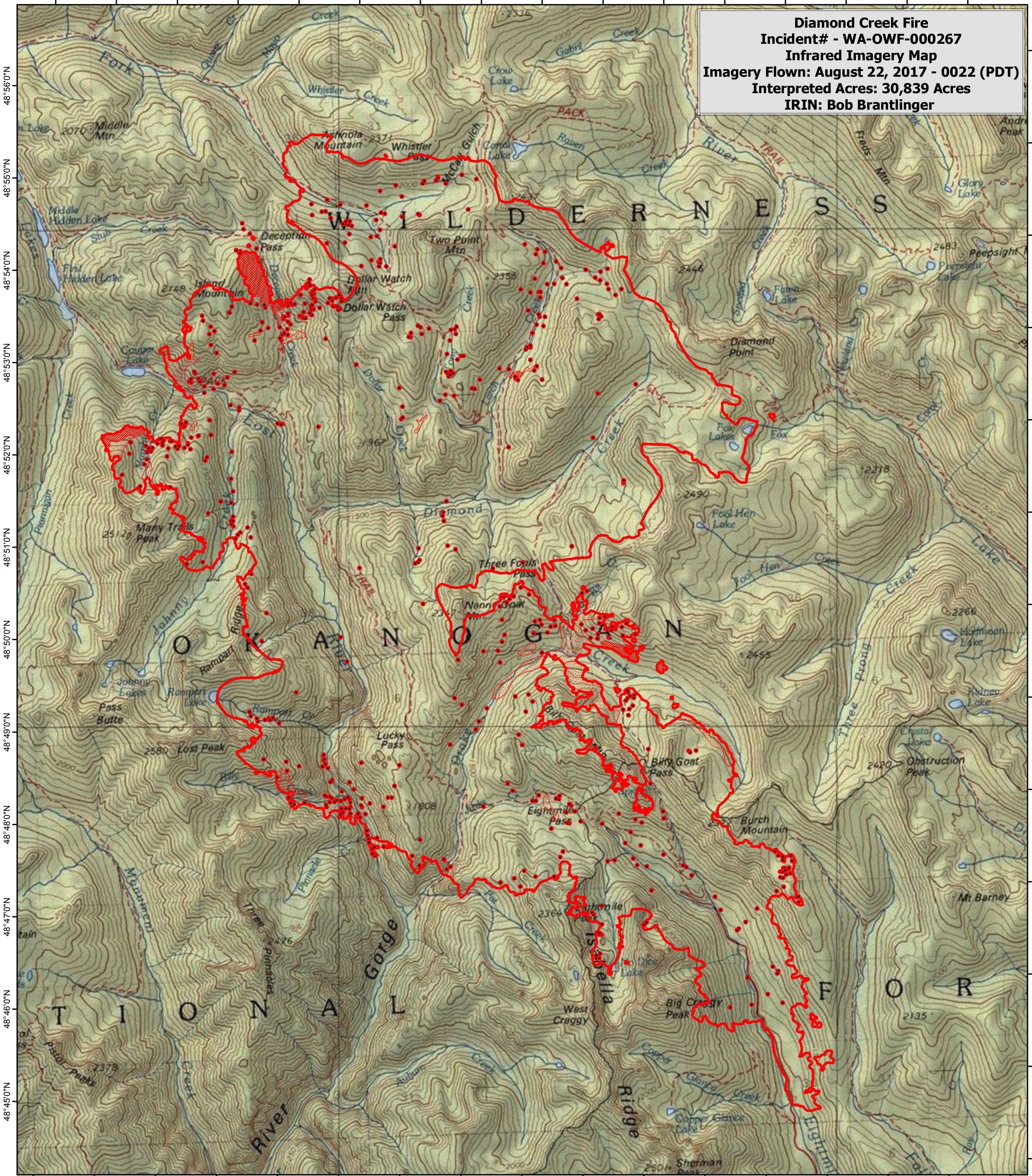

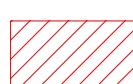




120°29'0"W 120°28'0"W 120°27'0"W 120°26'0"W 120°25'0"W 120°24'0"W 120°23'0"W 120°22'0"W 120°21'0"W 120°20'0"W 120°19'0"W 120°18'0"W 120°17'0"W 120°16'0"W 120°15'0"W 120°14'0"W

Diamond Creek Fire
Incident# - WA-OWF-000267
Infrared Imagery Map
Imagery Flown: August 22, 2017 - 0022 (PDT)
Interpreted Acres: 30,839 Acres
IRIN: Bob Brantlinger



Legend

-  **Heat Perimeter**
-  **Intense Heat**
-  **Isolated Heat Source**
-  **Scattered Heat Source**

