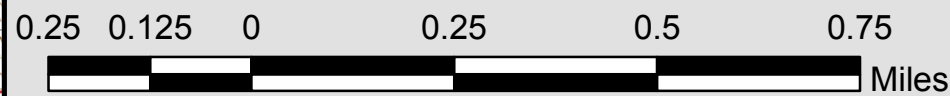


121°34'0"W 121°33'0"W 121°32'0"W 121°31'0"W 121°30'0"W

Dry Creek Fire Infrared Map
Thermal Image Aquired 7/16/2017
0103 PDT
Calculated 321 Acres
Brian Banks IRIN

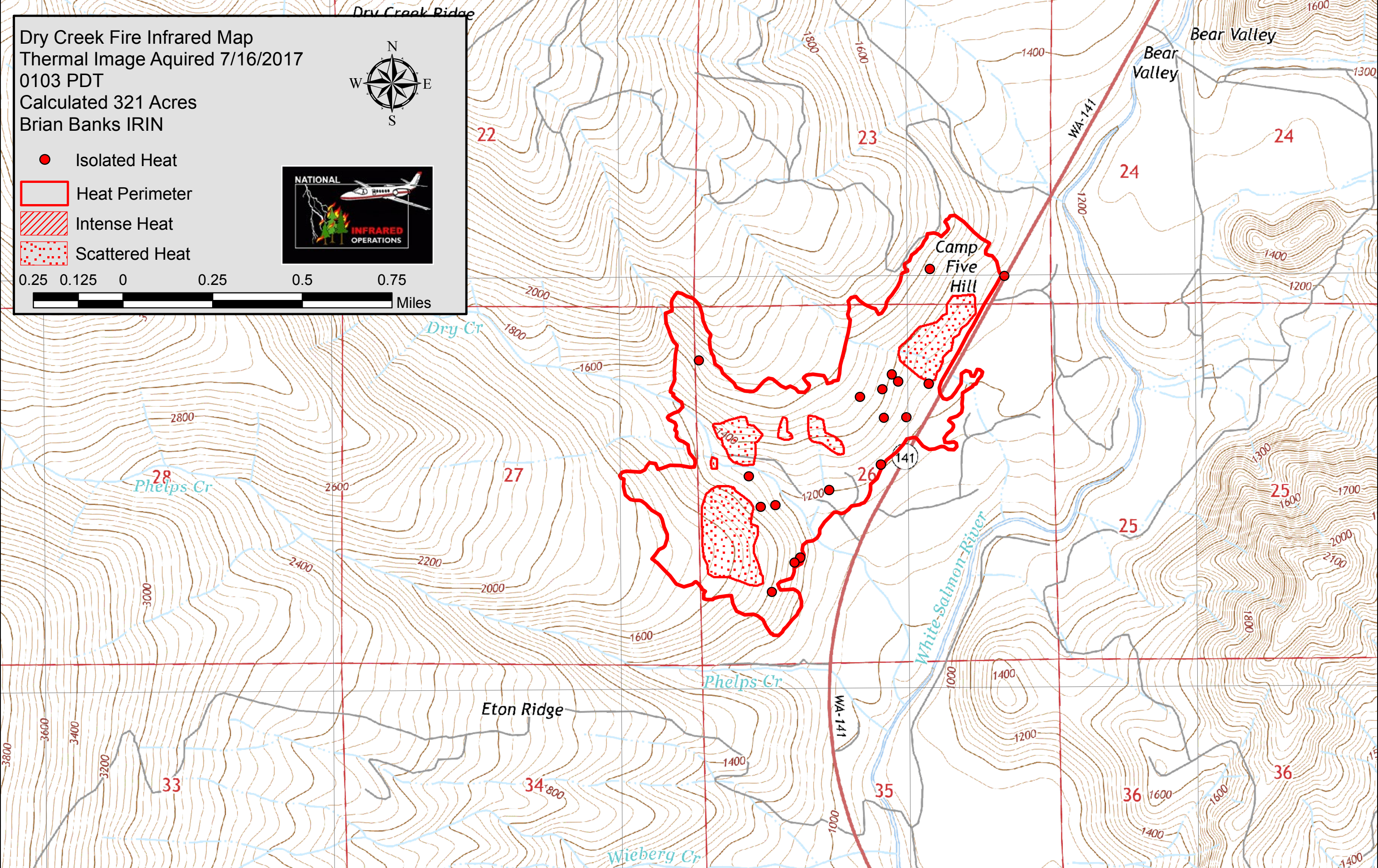


- Isolated Heat
- Heat Perimeter
- Intense Heat
- Scattered Heat



45°54'0"N

45°54'0"N



45°53'0"N

45°53'0"N

121°34'0"W 121°33'0"W 121°32'0"W 121°31'0"W 121°30'0"W