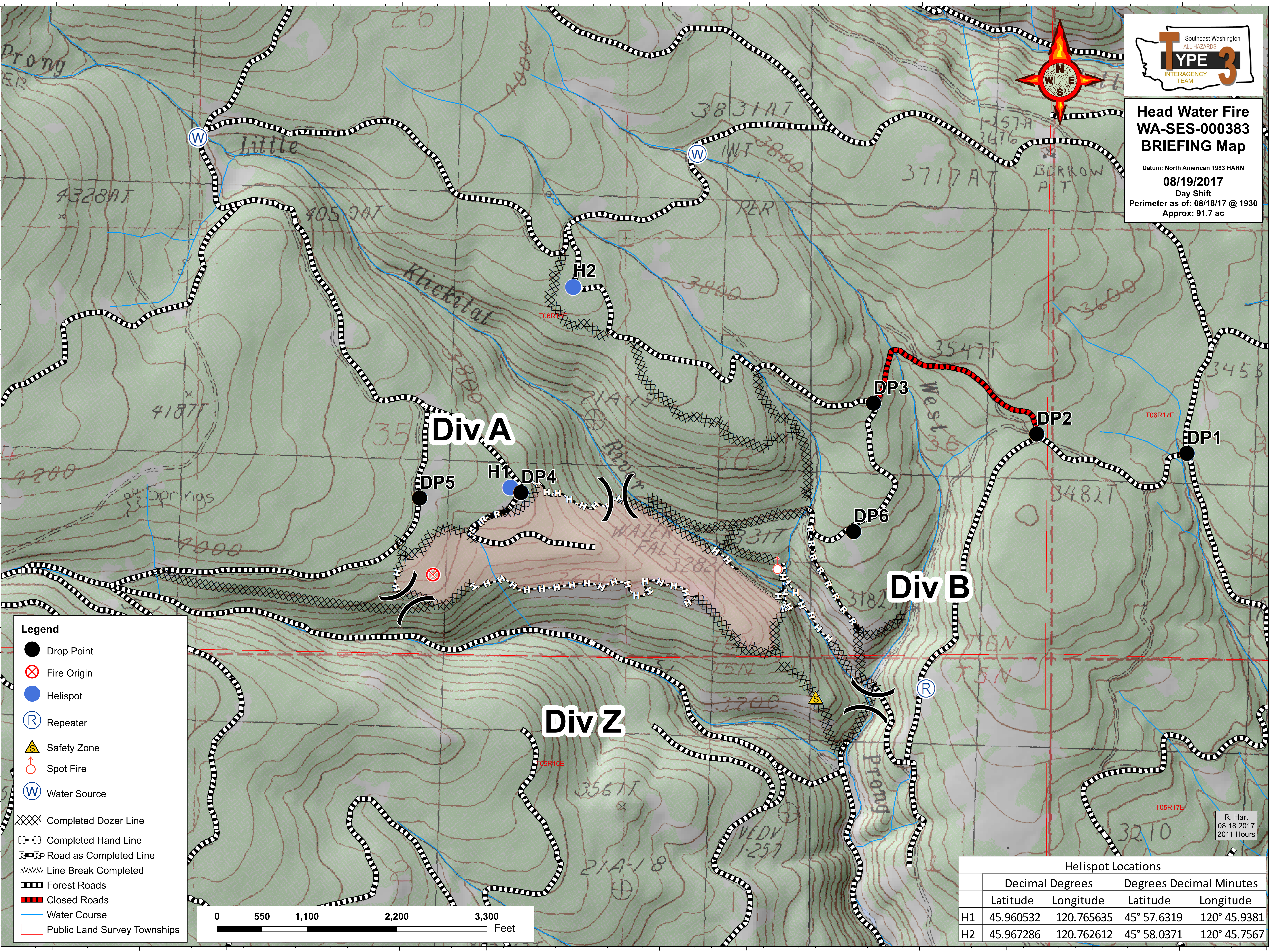
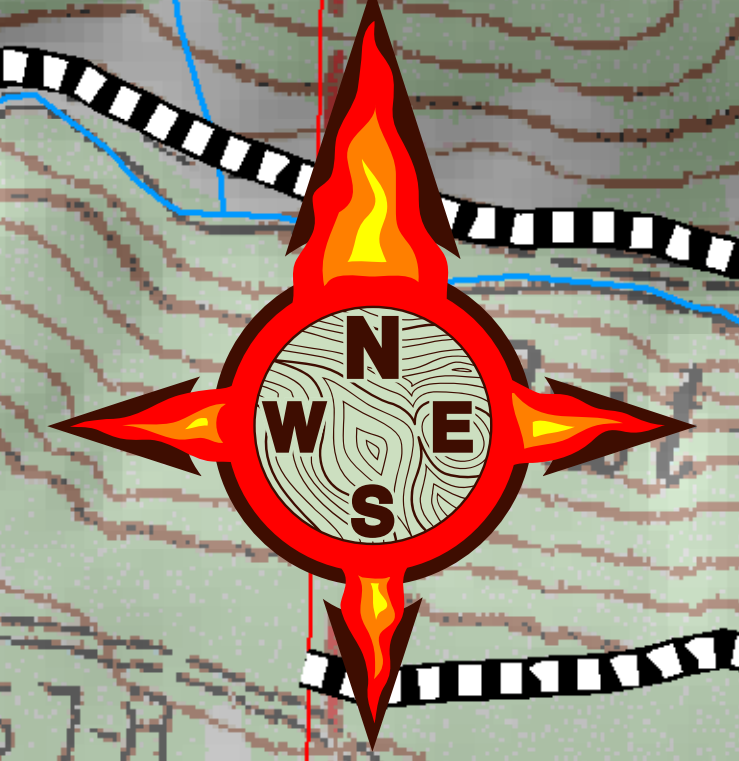


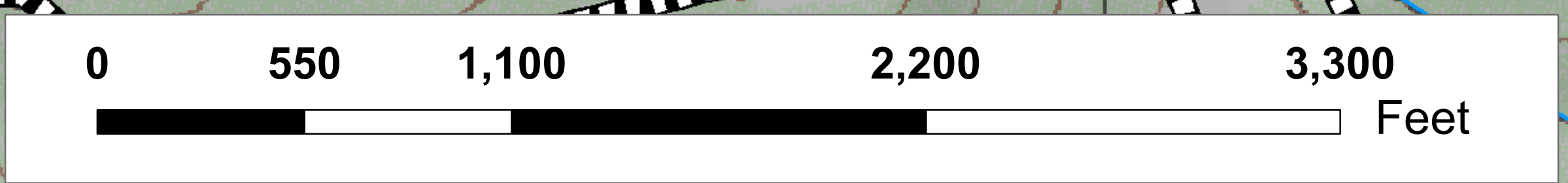
Head Water Fire WA-SES-000383 BRIEFING Map

Datum: North American 1983 HARN
08/19/2017
 Day Shift
 Perimeter as of: 08/18/17 @ 1930
 Approx: 91.7 ac



Legend

- Drop Point
- ⊗ Fire Origin
- Helispot
- Ⓜ Repeater
- ▲ Safety Zone
- Ⓢ Spot Fire
- Ⓜ Water Source
- XXXX Completed Dozer Line
- HHHH Completed Hand Line
- RRRR Road as Completed Line
- MMMM Line Break Completed
- ▬▬▬ Forest Roads
- ▬▬▬ Closed Roads
- Water Course
- Public Land Survey Townships



Helispot Locations				
	Decimal Degrees		Degrees Decimal Minutes	
	Latitude	Longitude	Latitude	Longitude
H1	45.960532	120.765635	45° 57.6319	120° 45.9381
H2	45.967286	120.762612	45° 58.0371	120° 45.7567

R. Hart
08 18 2017
2011 Hours