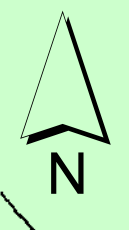
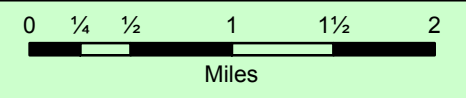


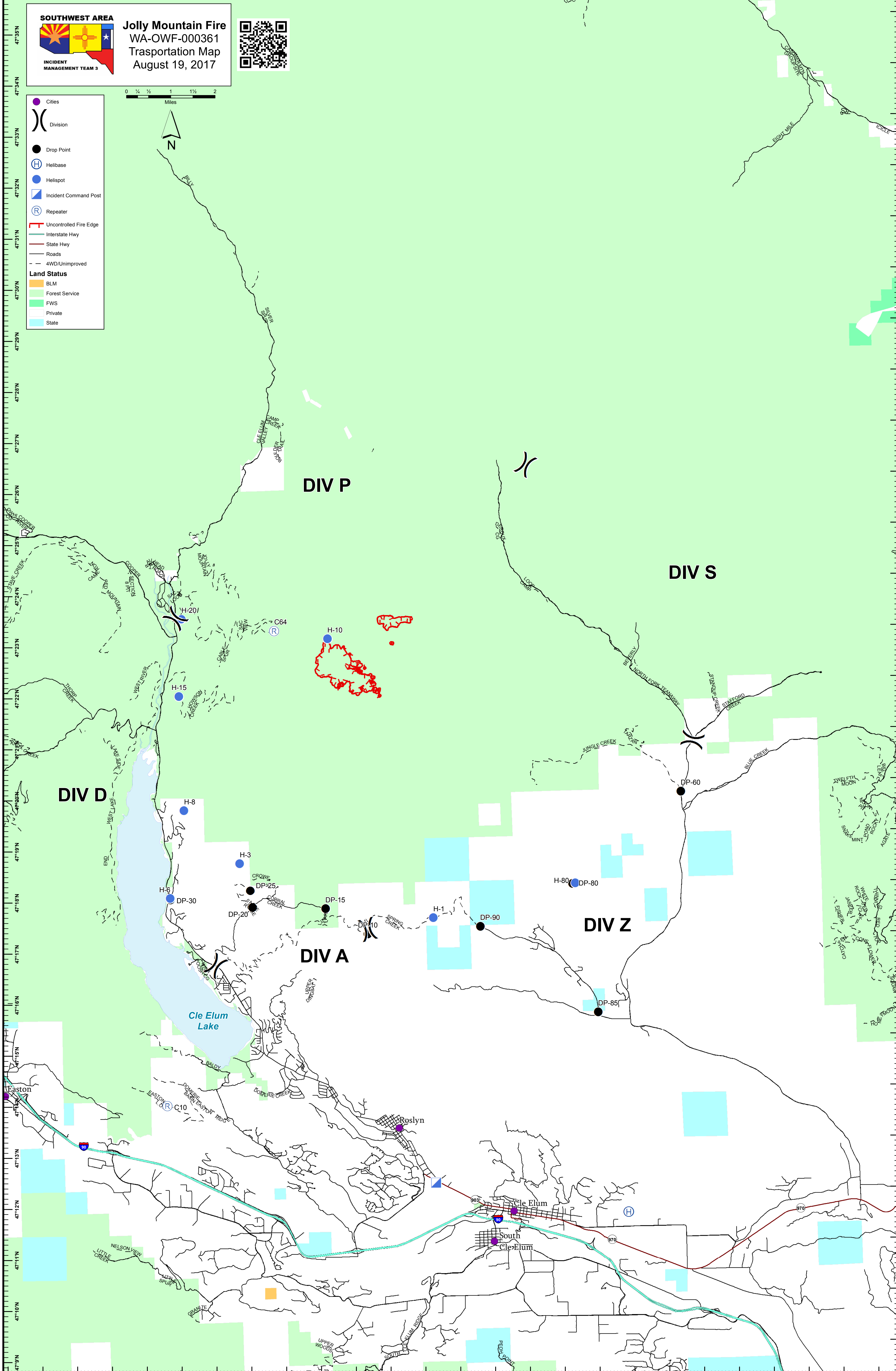
121°10'W 121°9'W 121°8'W 121°7'W 121°6'W 121°5'W 121°4'W 121°3'W 121°2'W 121°1'W 121°0'W 120°59'W 120°58'W 120°57'W 120°56'W 120°55'W 120°54'W 120°53'W 120°52'W 120°51'W 120°50'W 120°49'W 120°48'W 120°47'W 120°46'W 120°45'W



Jolly Mountain Fire
WA-OWF-000361
Transportation Map
August 19, 2017



- Cities
 - Division
 - Drop Point
 - Helibase
 - Helispot
 - Incident Command Post
 - Repeater
 - Uncontrolled Fire Edge
 - Interstate Hwy
 - State Hwy
 - Roads
 - 4WD/Unimproved
- Land Status**
- BLM
 - Forest Service
 - FWS
 - Private
 - State



47°36'N
47°35'N
47°34'N
47°33'N
47°32'N
47°31'N
47°30'N
47°29'N
47°28'N
47°27'N
47°26'N
47°25'N
47°24'N
47°23'N
47°22'N
47°21'N
47°20'N
47°19'N
47°18'N
47°17'N
47°16'N
47°15'N
47°14'N
47°13'N
47°12'N
47°11'N
47°10'N
47°9'N