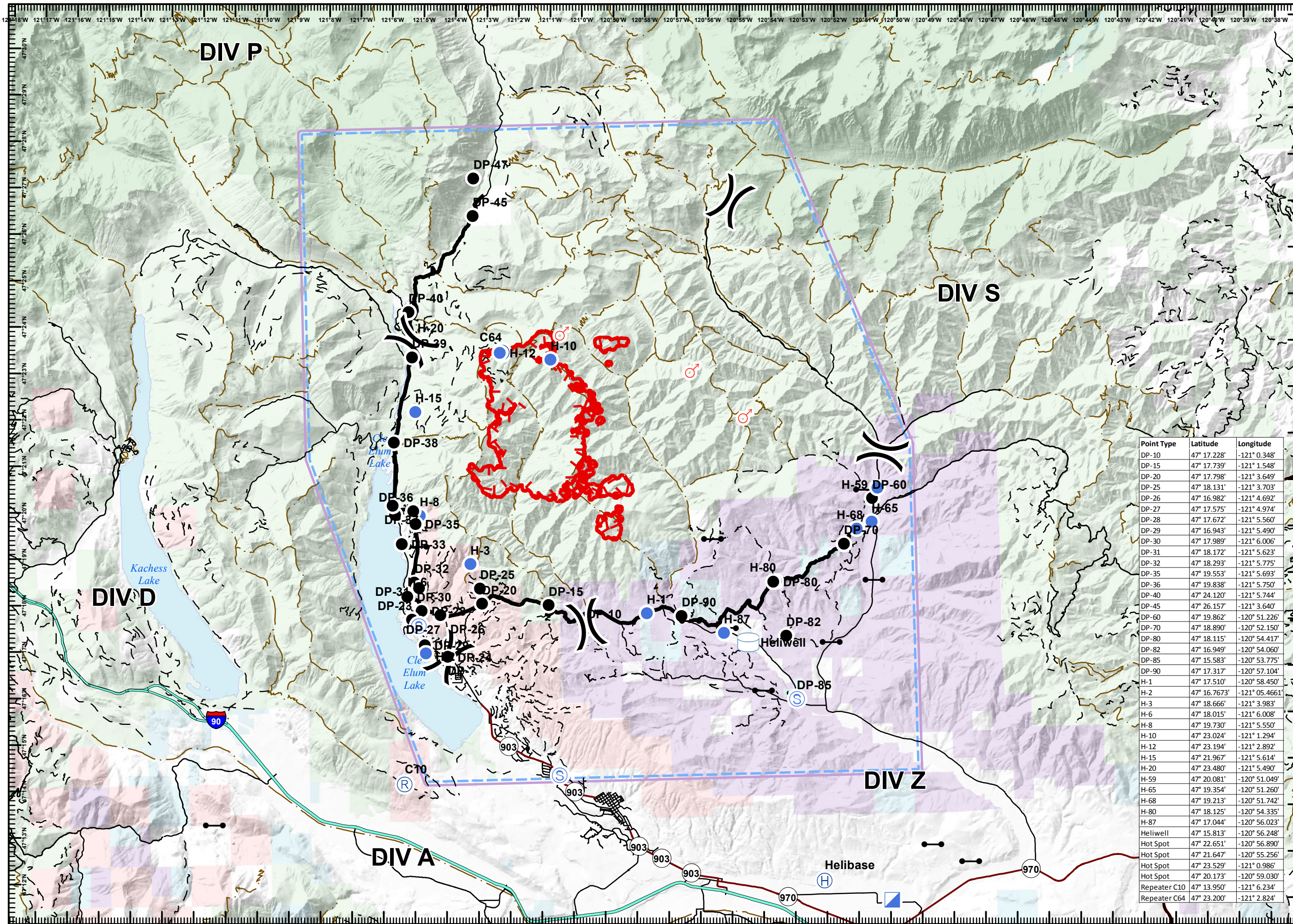




Jolly Mountain
WA-OWF-000361
Pilot Map
August 29, 2017
NAD 83 UTM 10N

5,164 Acres
Perimeter Flight
08/28/2017 @ 2122

- Division Break
- Drop Point
- Helibase
- Helispot
- Incident Command Post
- Gate
- Repeater
- Spot Fire
- Staging
- Water Tank
- Uncontrolled Fire Edge
- Completed Operational Line
- Ownership**
 - Bureau of Land Management
 - Fish and Wildlife Service
 - Forest Service
 - Forest Service Wilderness
 - Private Lands
 - State Lands
 - Teaway Community Forest
 - The Nature Conservancy



Point Type	Latitude	Longitude
DP-10	47° 17.228'	-121° 0.348'
DP-15	47° 17.739'	-121° 1.548'
DP-20	47° 17.798'	-121° 3.649'
DP-25	47° 18.131'	-121° 3.703'
DP-26	47° 16.982'	-121° 4.692'
DP-27	47° 17.575'	-121° 4.974'
DP-28	47° 17.672'	-121° 5.560'
DP-29	47° 16.943'	-121° 5.490'
DP-30	47° 17.989'	-121° 6.006'
DP-31	47° 18.172'	-121° 5.623'
DP-32	47° 18.293'	-121° 5.775'
DP-35	47° 19.553'	-121° 5.693'
DP-36	47° 19.838'	-121° 5.750'
DP-40	47° 24.120'	-121° 5.744'
DP-45	47° 26.157'	-121° 3.640'
DP-60	47° 19.862'	-120° 51.226'
DP-70	47° 18.890'	-120° 52.150'
DP-80	47° 18.115'	-120° 54.417'
DP-82	47° 16.949'	-120° 54.060'
DP-85	47° 15.583'	-120° 53.775'
DP-90	47° 17.317'	-120° 57.104'
H-1	47° 17.510'	-120° 58.450'
H-2	47° 16.7673'	-121° 05.4661'
H-3	47° 18.666'	-121° 3.983'
H-6	47° 18.015'	-121° 6.008'
H-8	47° 19.730'	-121° 5.550'
H-10	47° 23.024'	-121° 1.294'
H-12	47° 23.194'	-121° 2.892'
H-15	47° 21.967'	-121° 5.614'
H-20	47° 23.480'	-121° 5.490'
H-59	47° 20.081'	-120° 51.049'
H-65	47° 19.354'	-120° 51.260'
H-68	47° 19.213'	-120° 51.742'
H-80	47° 18.125'	-120° 54.335'
H-87	47° 17.044'	-120° 56.023'
Heliwell	47° 15.813'	-120° 56.248'
Hot Spot	47° 22.651'	-120° 56.890'
Hot Spot	47° 21.647'	-120° 55.256'
Hot Spot	47° 23.529'	-121° 0.986'
Hot Spot	47° 20.173'	-120° 59.030'
Repeater C10	47° 13.950'	-121° 6.234'
Repeater C64	47° 23.200'	-121° 2.824'

