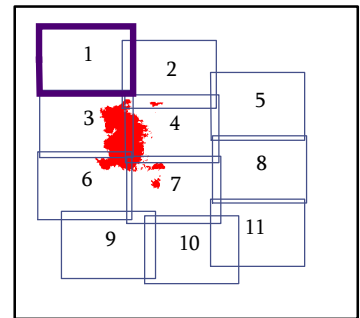




IAP MAP
 PAGE 1 OF 11
 Jolly Mountain Fire
 WA-OWF-000361
 August 30, 2017
 5,164 Acres
 IR Flown
 8/28/2017 @ 2122 Hrs
 1:24,000

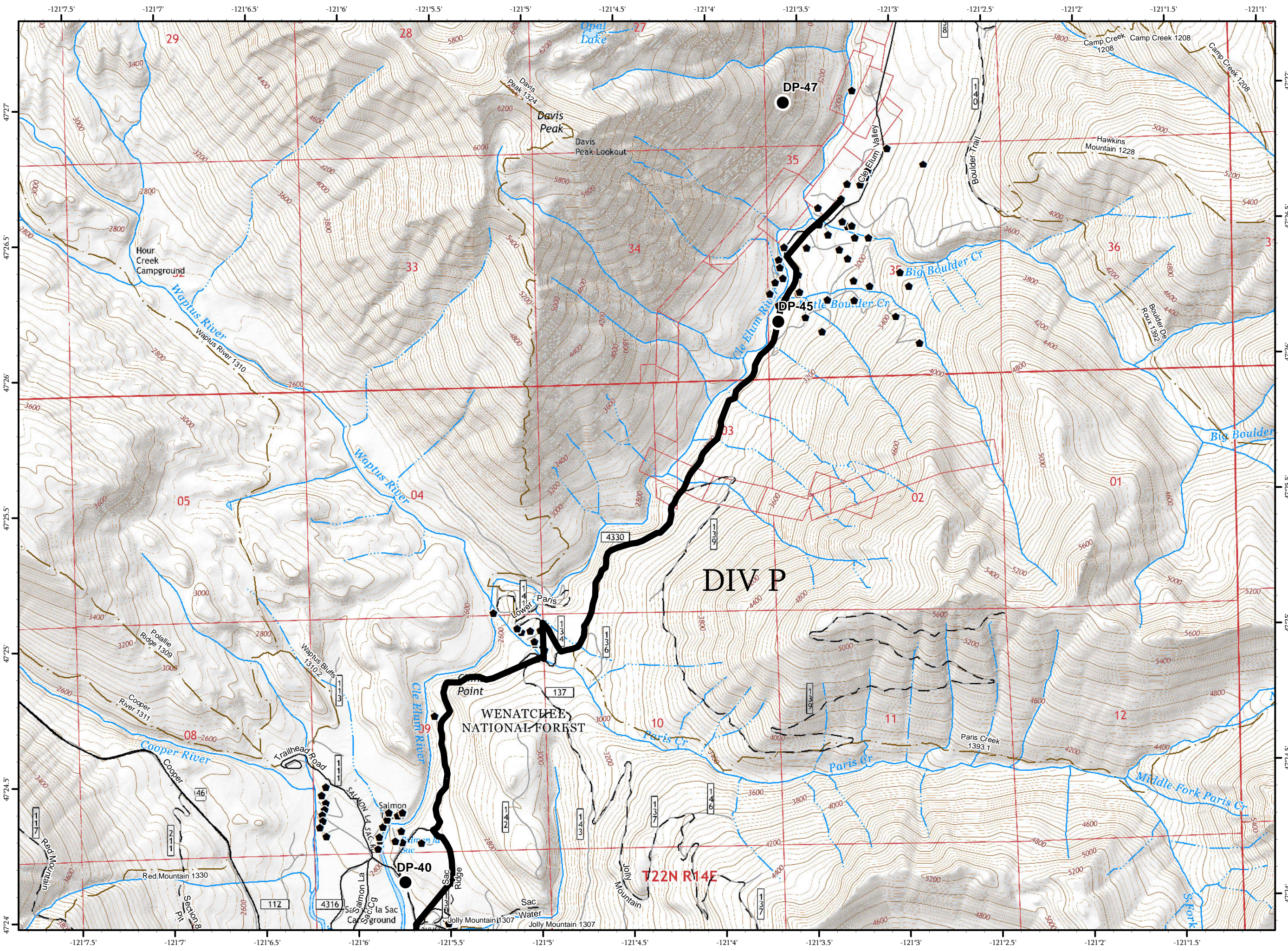
- Drop Point
- ▬ Completed Operational Line
- ◆ Triaged Structure
- Roads
- - 4WD/Unimproved
- FS Trails



0 1/4 1/2

Miles

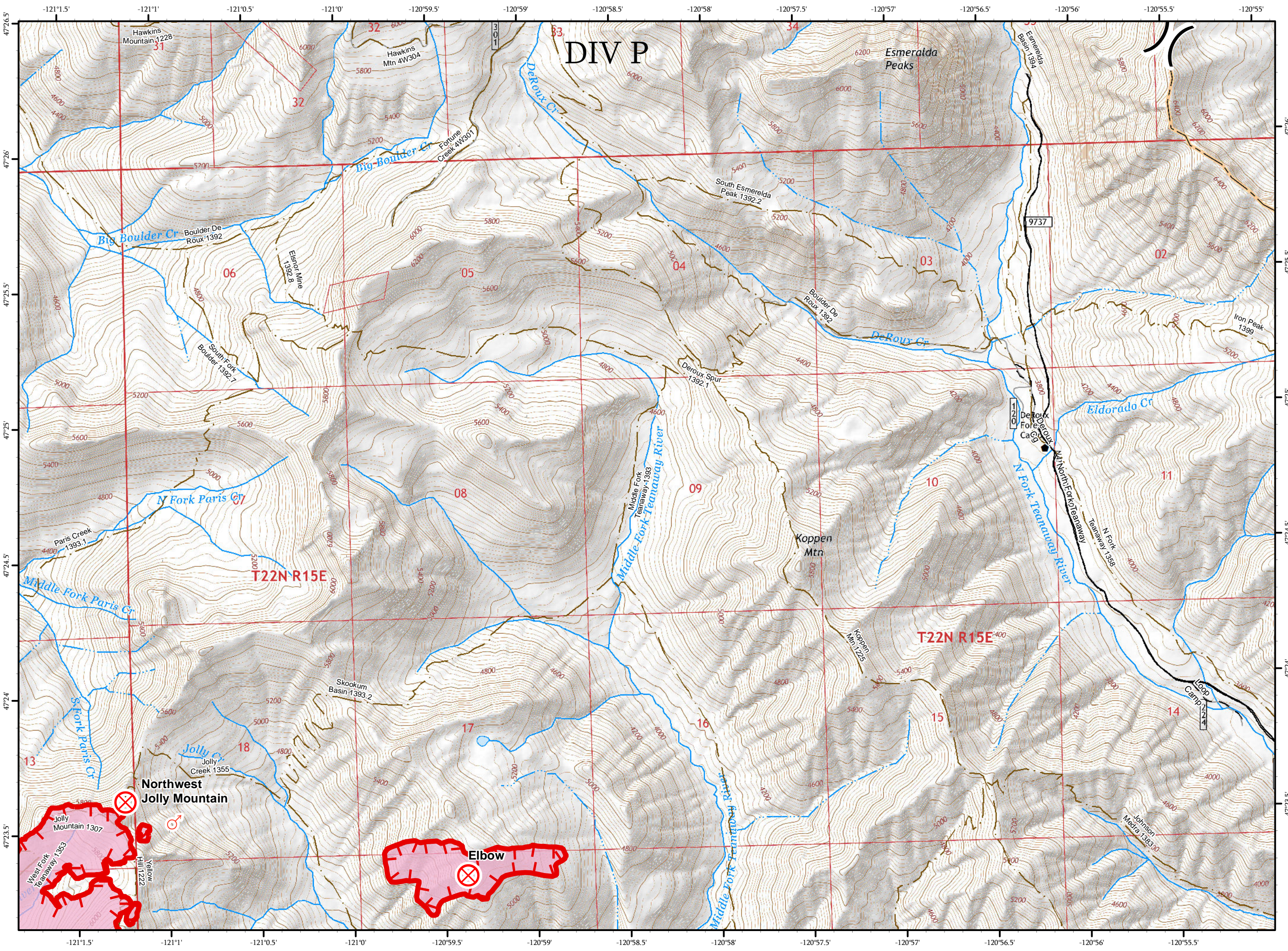
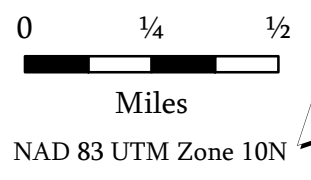
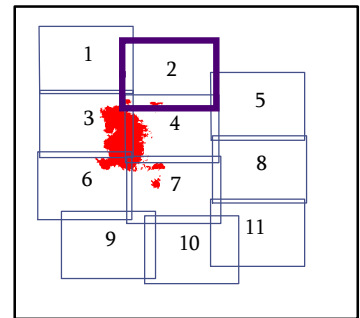
NAD 83 UTM Zone 10N
















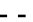

IAP MAP
 PAGE 2 OF 11
 Jolly Mountain Fire
 WA-OWF-000361
 August 30, 2017
 5,164 Acres
 IR Flown
 8/28/2017 @ 2122 Hrs
 1:24,000

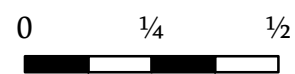
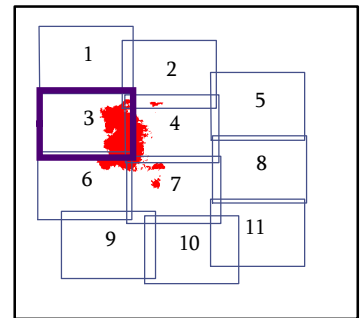
- Fire Origin
- Spot Fire
- Division Break
- Uncontrolled Fire Edge
- Triaged Structure
- Roads
- 4WD/Unimproved
- FS Trails





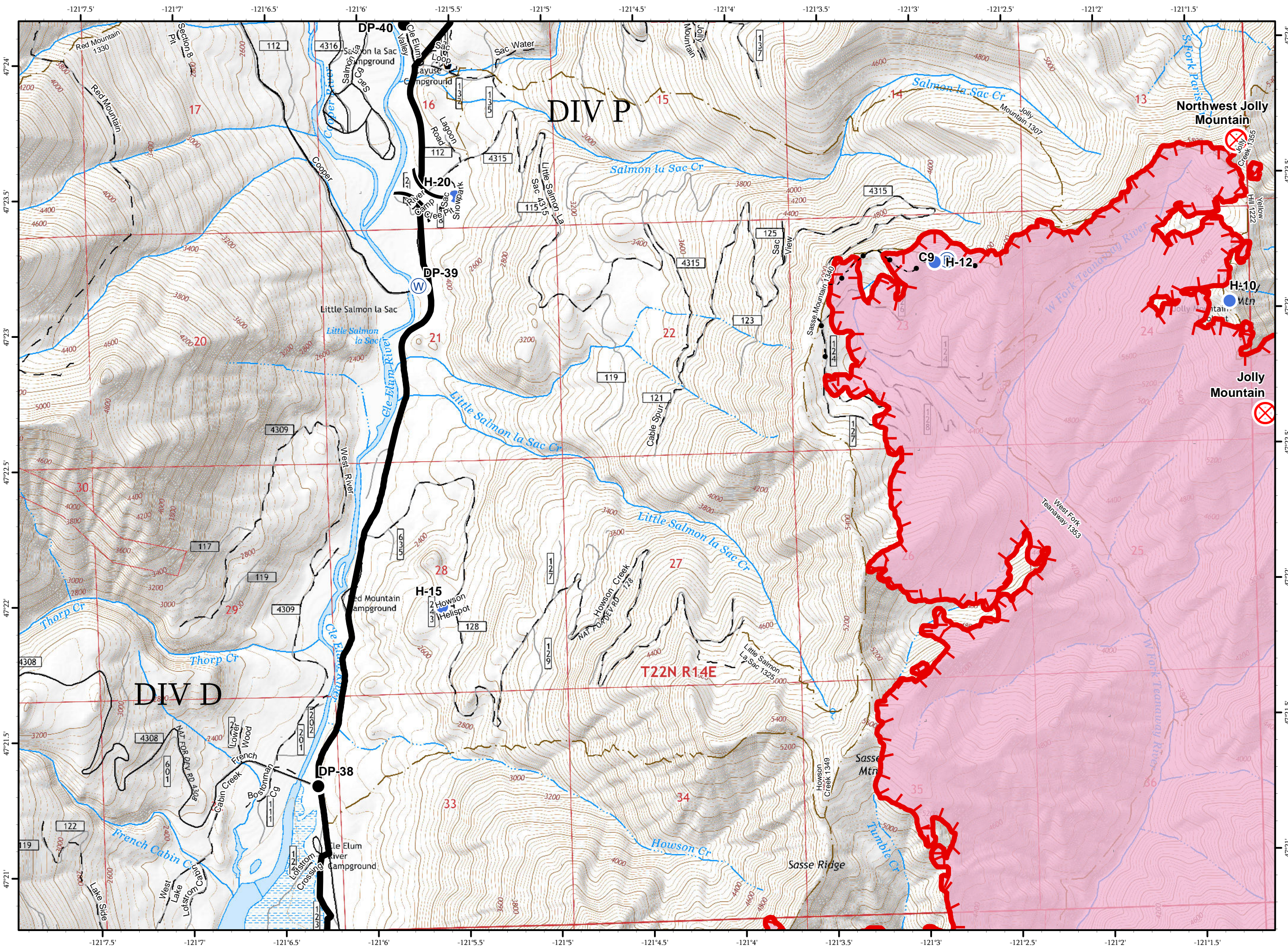
IAP MAP
PAGE 3 OF 11
Jolly Mountain Fire
WA-OWF-000361
August 30, 2017
5,164 Acres
IR Flown
8/28/2017 @ 2122 Hrs
1:24,000

-  Drop Point
-  Fire Origin
-  Helispot
-  Repeater
-  Water Source
-  Division Break
-  Uncontrolled Fire Edge
-  Completed Operational Line
-  Highlighted Manmade Feature
-  Triaged Structure
-  Roads
-  4WD/Unimproved
-  FS Trails



Miles

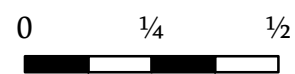
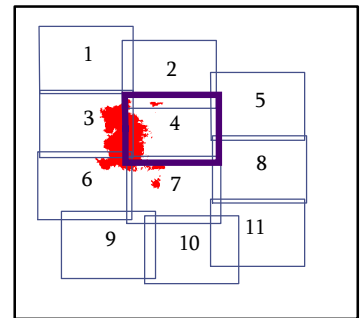
NAD 83 UTM Zone 10N



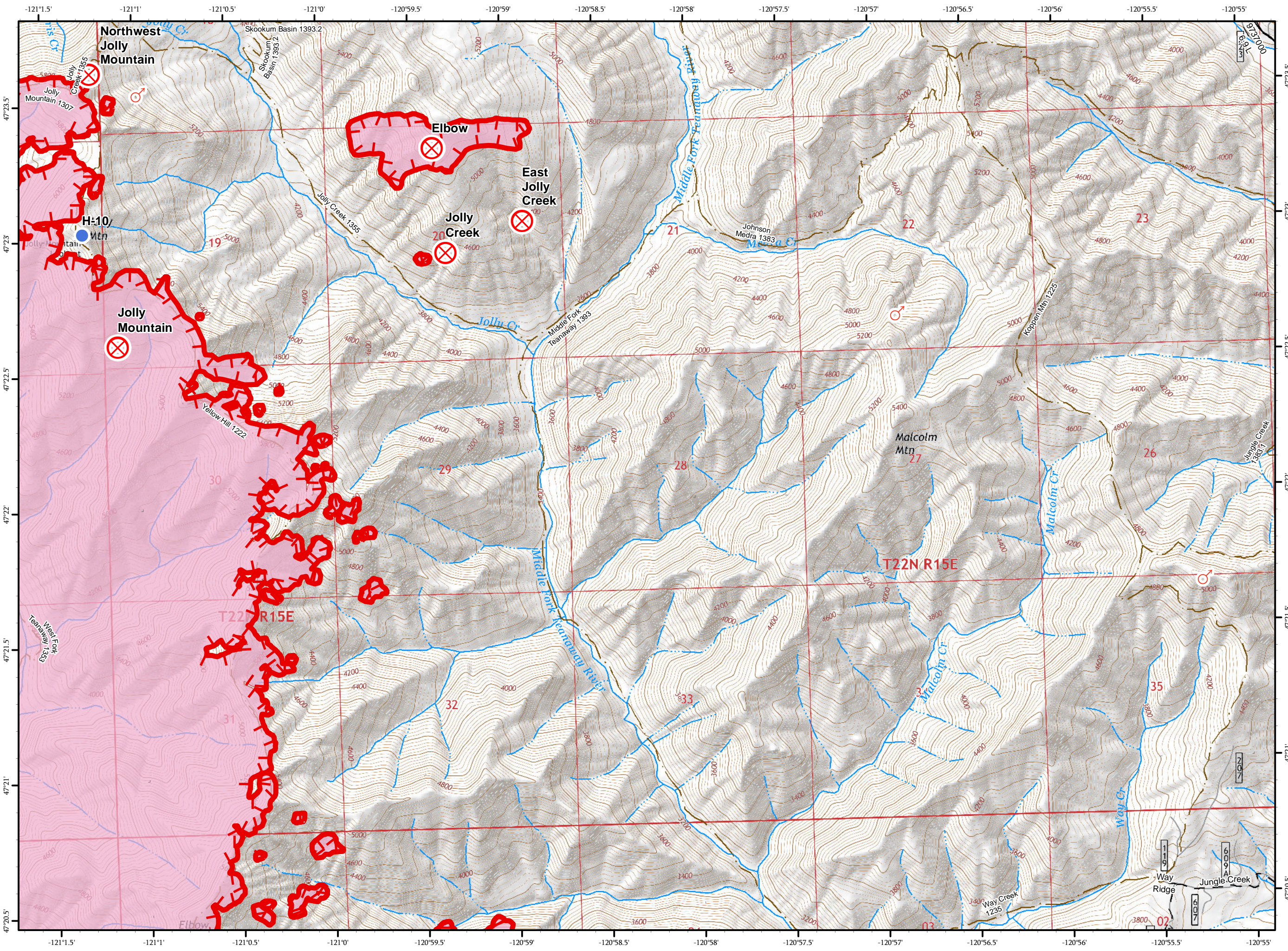


IAP MAP
PAGE 4 OF 11
Jolly Mountain Fire
WA-OWF-000361
August 30, 2017
5,164 Acres
IR Flown
8/28/2017 @ 2122 Hrs
1:24,000

- Fire Origin
- Helispot
- Spot Fire
- Uncontrolled Fire Edge
- Roads
- 4WD/Unimproved
- FS Trails



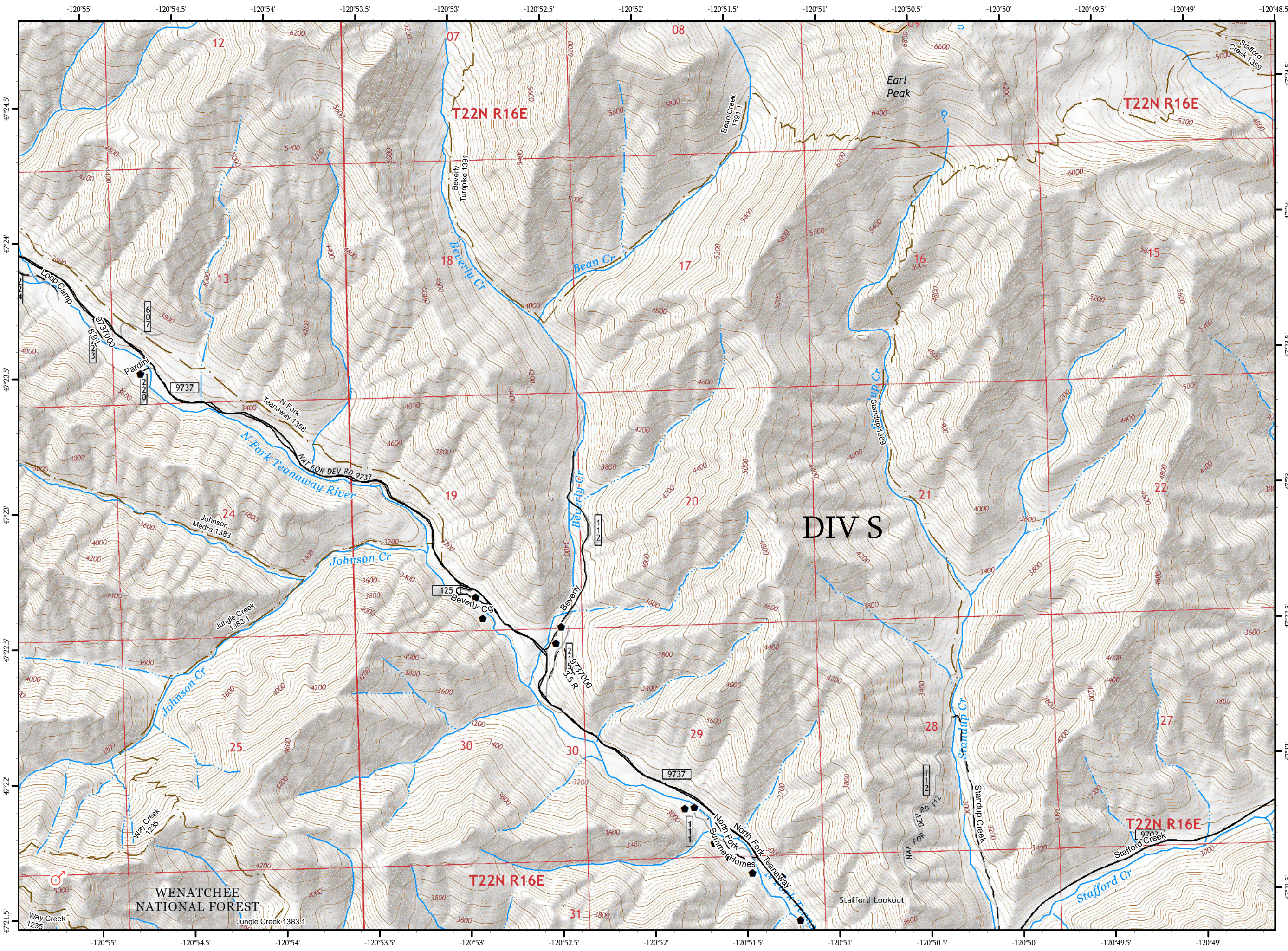
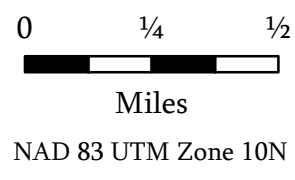
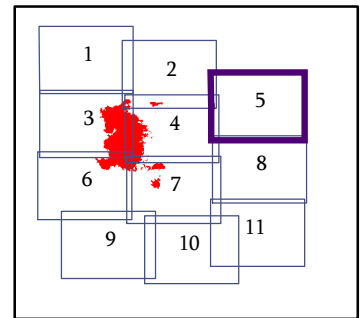
Miles
NAD 83 UTM Zone 10N





IAP MAP
 PAGE 5 OF 11
 Jolly Mountain Fire
 WA-OWF-000361
 August 30, 2017
 5,164 Acres
 IR Flown
 8/28/2017 @ 2122 Hrs
 1:24,000

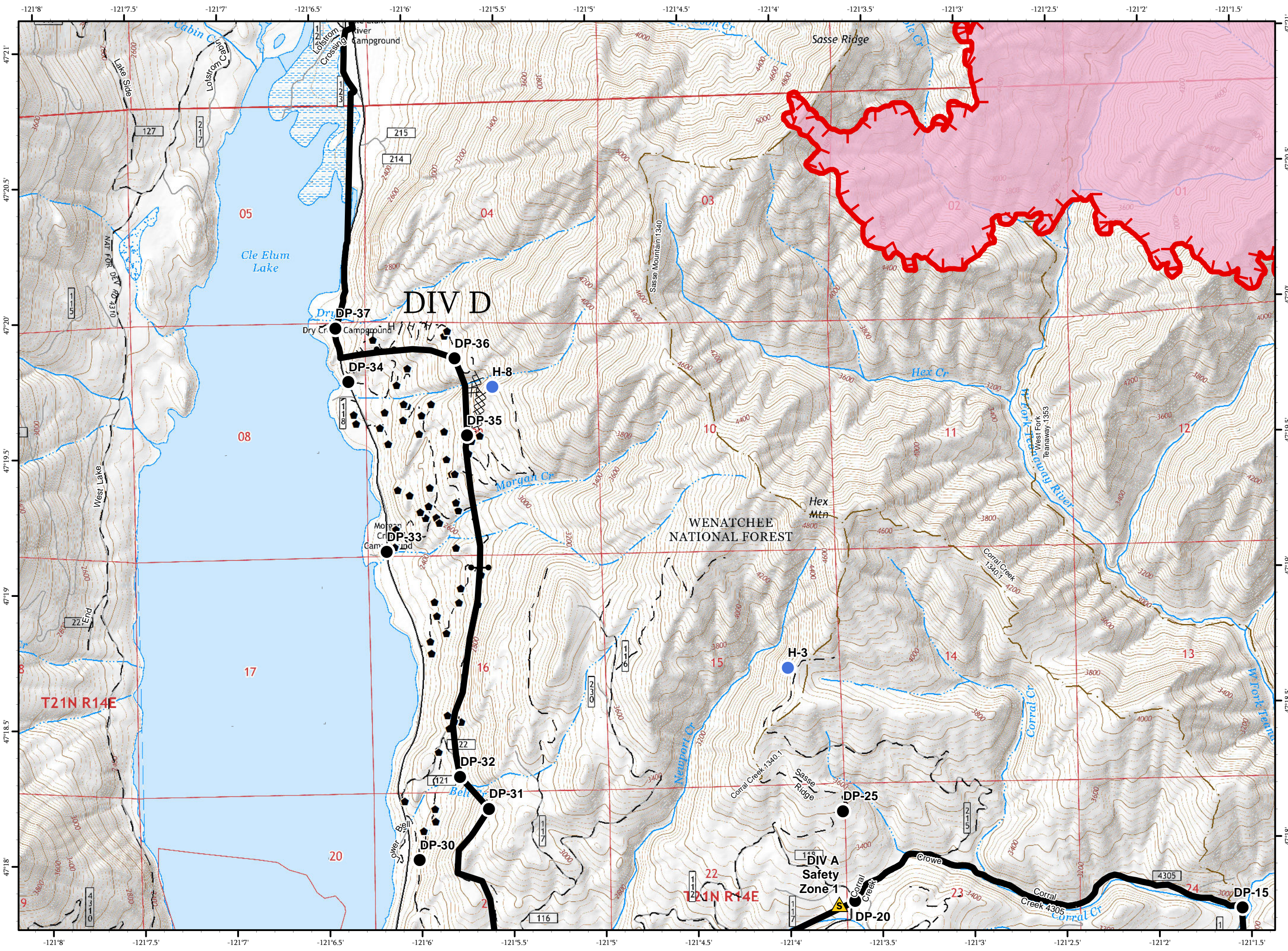
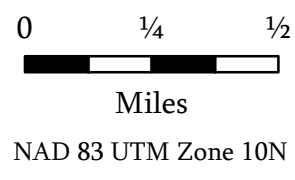
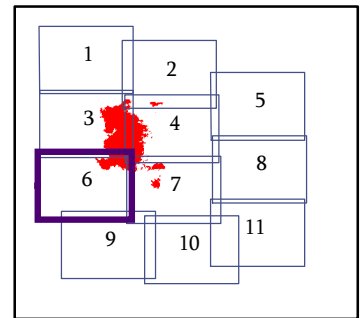
- Spot Fire
- Triaged Structure
- Roads
- 4WD/Unimproved
- FS Trails





IAP MAP
PAGE 6 OF 11
Jolly Mountain Fire
WA-OWF-000361
August 30, 2017
5,164 Acres
IR Flown
8/28/2017 @ 2122 Hrs
1:24,000

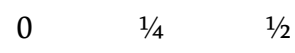
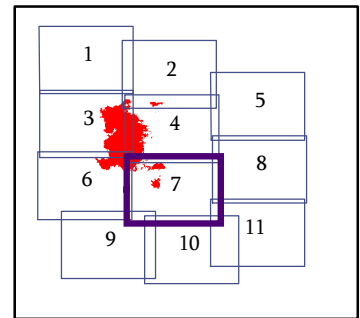
- Drop Point
- Gate
- Helispot
- ▲ Safety Zone
- Uncontrolled Fire Edge
- Completed Operational Line
- XXXX Completed Dozer Line
- H - H Completed Hand Line
- Triaged Structure
- Roads
- - 4WD/Unimproved
- FS Trails



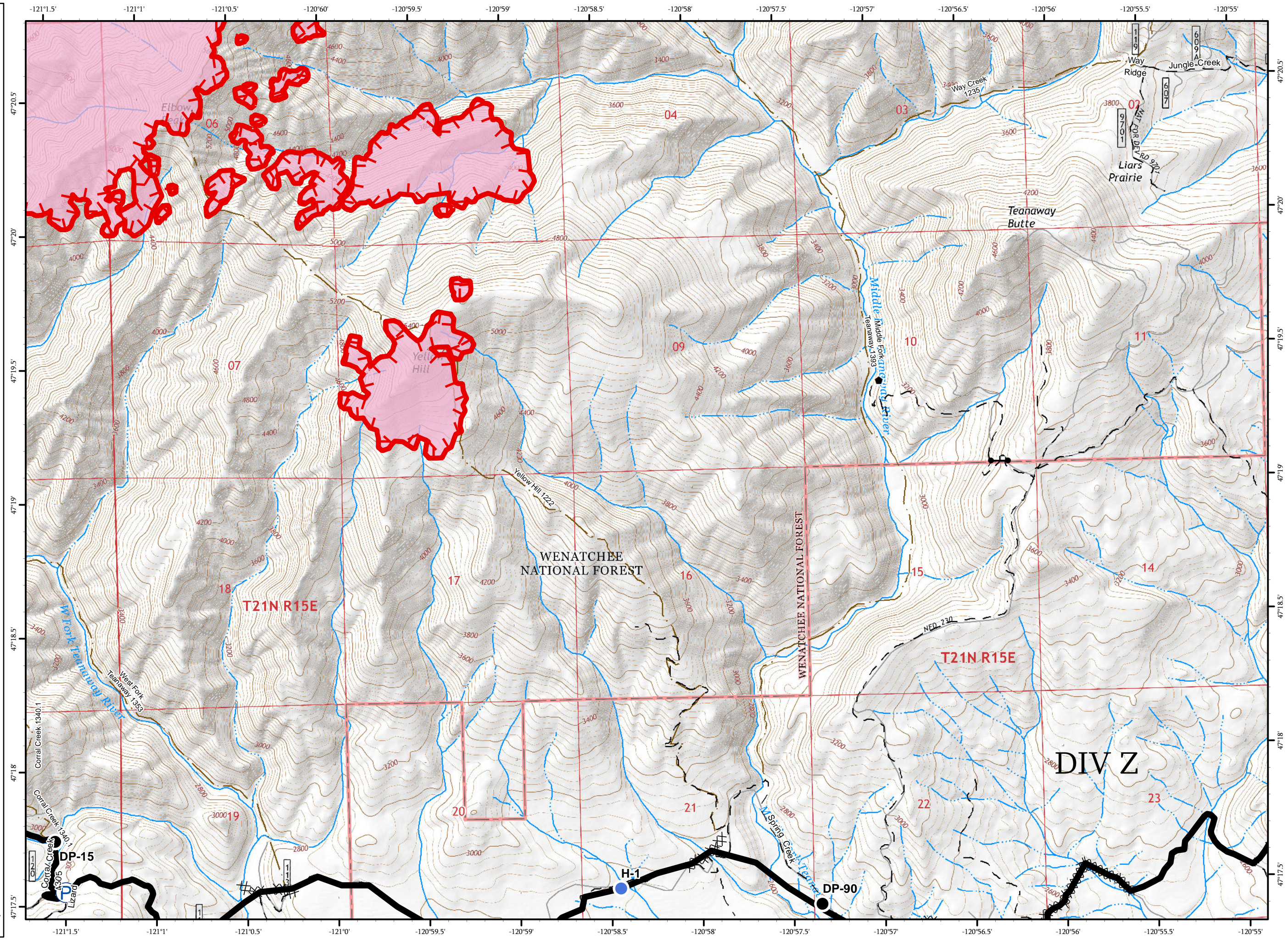


IAP MAP
PAGE 7 OF 11
Jolly Mountain Fire
WA-OWF-000361
August 30, 2017
5,164 Acres
IR Flown
8/28/2017 @ 2122 Hrs
1:24,000

- Drop Point
- Gate
- Helispot
- P Pump
- Uncontrolled Fire Edge
- Completed Operational Line
- XXXXX Completed Dozer Line
- H - H Completed Hand Line
- Triaged Structure
- Roads
- - 4WD/Unimproved
- FS Trails



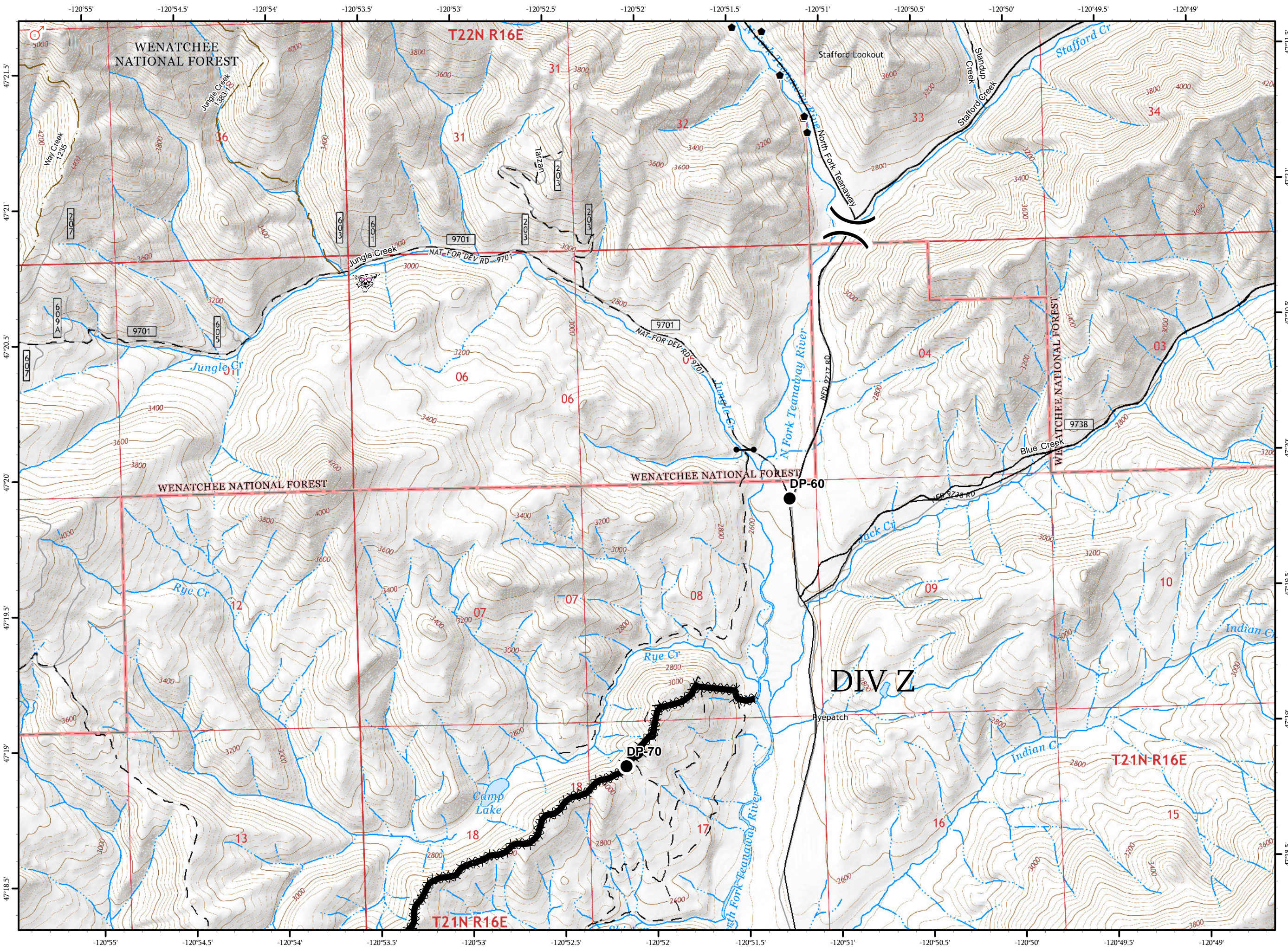
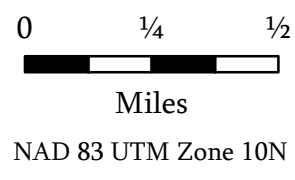
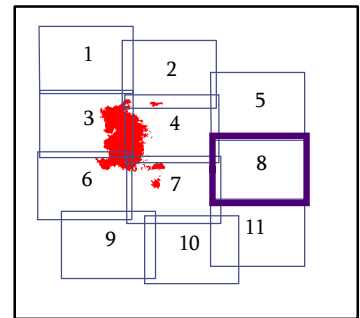
Miles
NAD 83 UTM Zone 10N





IAP MAP
 PAGE 8 OF 11
 Jolly Mountain Fire
 WA-OWF-000361
 August 30, 2017
 5,164 Acres
 IR Flown
 8/28/2017 @ 2122 Hrs
 1:24,000

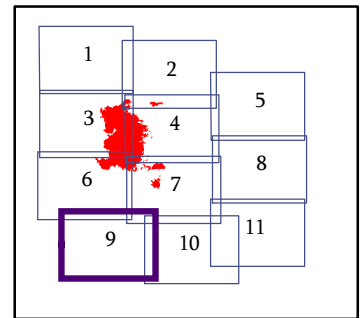
- Drop Point
- Gate
- Spot Fire
- Division Break
- Completed Operational Line
- Completed Dozer Line
- Triaged Structure
- Roads
- 4WD/Unimproved
- FS Trails



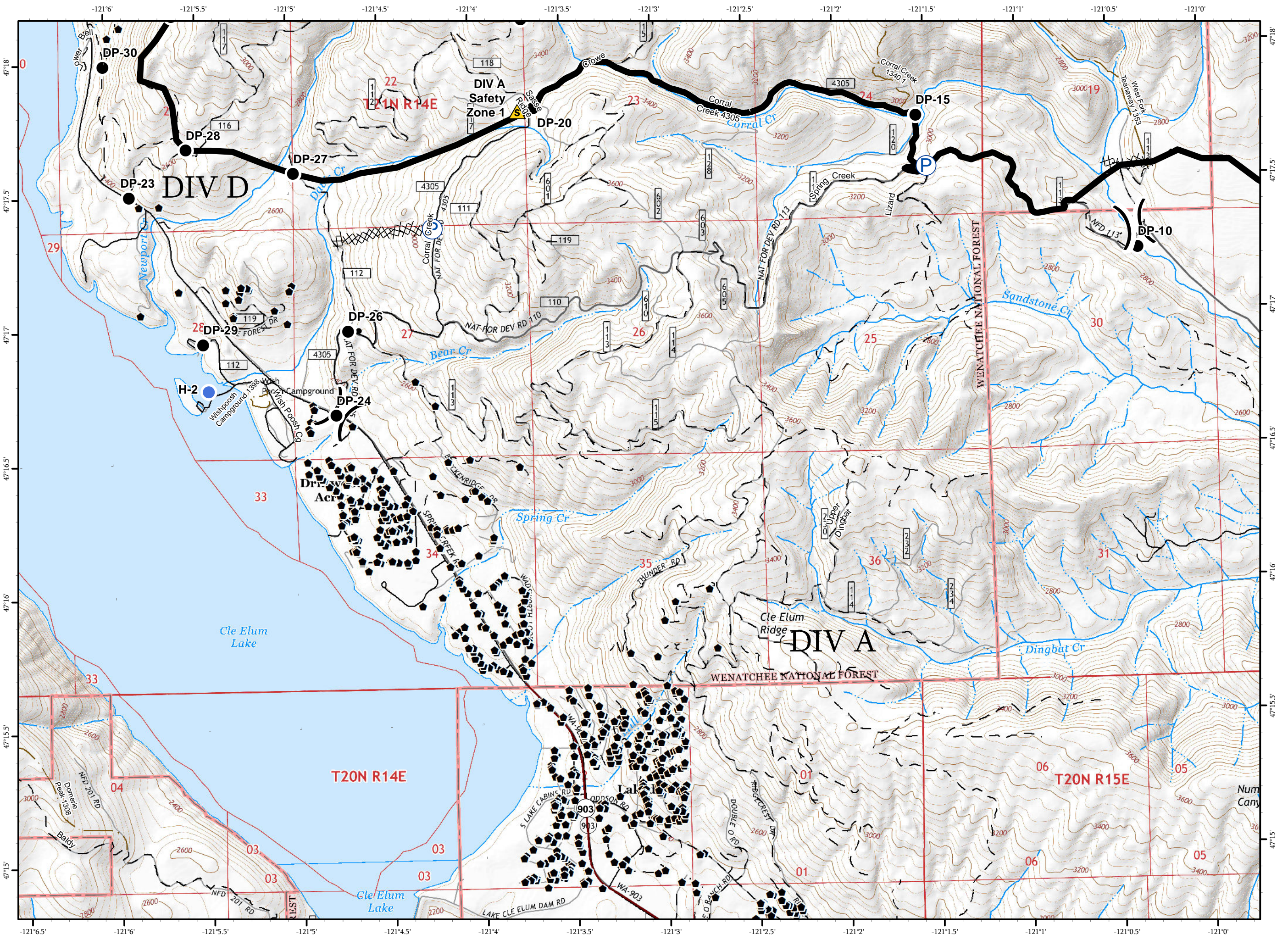


IAP MAP
PAGE 9 OF 11
Jolly Mountain Fire
WA-OWF-000361
August 30, 2017
5,164 Acres
IR Flown
8/28/2017 @ 2122 Hrs
1:24,000

- Drop Point
- Gate
- Helispot
- Pump
- Safety Zone
- Division Break
- Completed Operational Line
- Completed Dozer Line
- H - H Completed Hand Line
- Triaged Structure
- State Hwy
- Roads
- 4WD/Unimproved
- FS Trails
















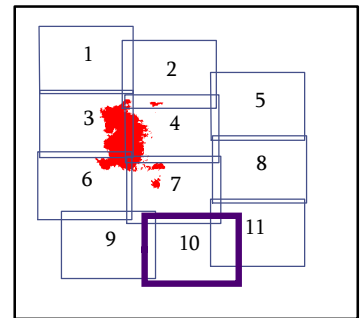
0 1/4 1/2
Miles
NAD 83 UTM Zone 10N





IAP MAP
PAGE 10 OF 11
Jolly Mountain Fire
WA-OWF-000361
August 30, 2017
5,164 Acres
IR Flown
8/28/2017 @ 2122 Hrs
1:24,000

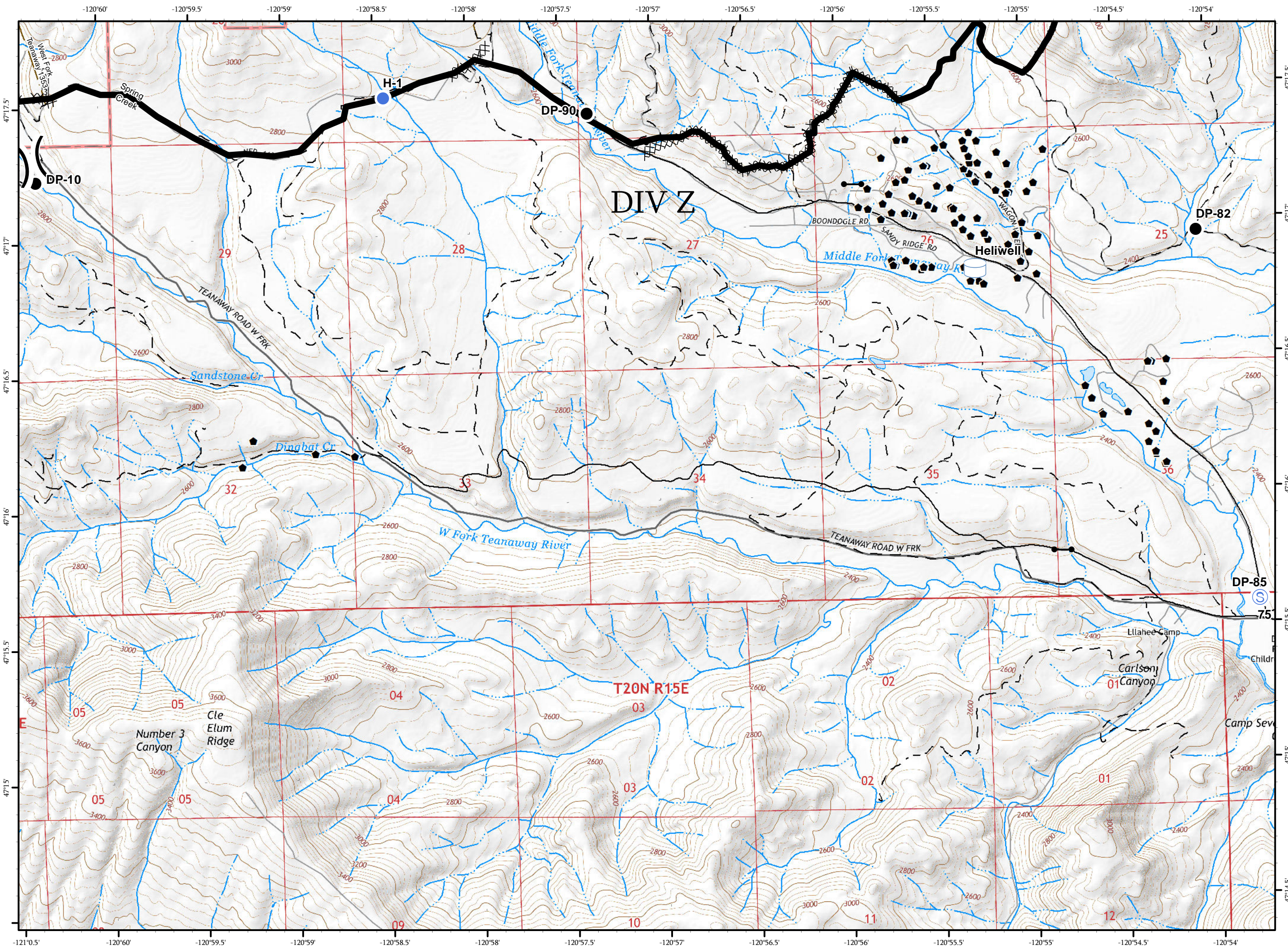
-  Drop Point
-  Gate
-  Helispot
-  Staging Area
-  Water Tank
-  Division Break
-  Completed Operational Line
-  Completed Dozer Line
-  H - H Completed Hand Line
-  Triaged Structure
-  Roads
-  4WD/Unimproved
-  FS Trails



0 1/4 1/2

Miles

NAD 83 UTM Zone 10N





IAP MAP
 PAGE 11 OF 11
 Jolly Mountain Fire
 WA-OWF-000361
 August 30, 2017
 5,164 Acres
 IR Flown
 8/28/2017 @ 2122 Hrs
 1:24,000

- Drop Point
- Gate
- Ⓢ Staging Area
- ⊕ Water Tank
- Completed Operational Line
- XXXX Completed Dozer Line
- H - H Completed Hand Line
- ◆ Triaged Structure
- Roads
- - 4WD/Unimproved

