

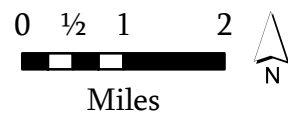


IAP MAP INDEX

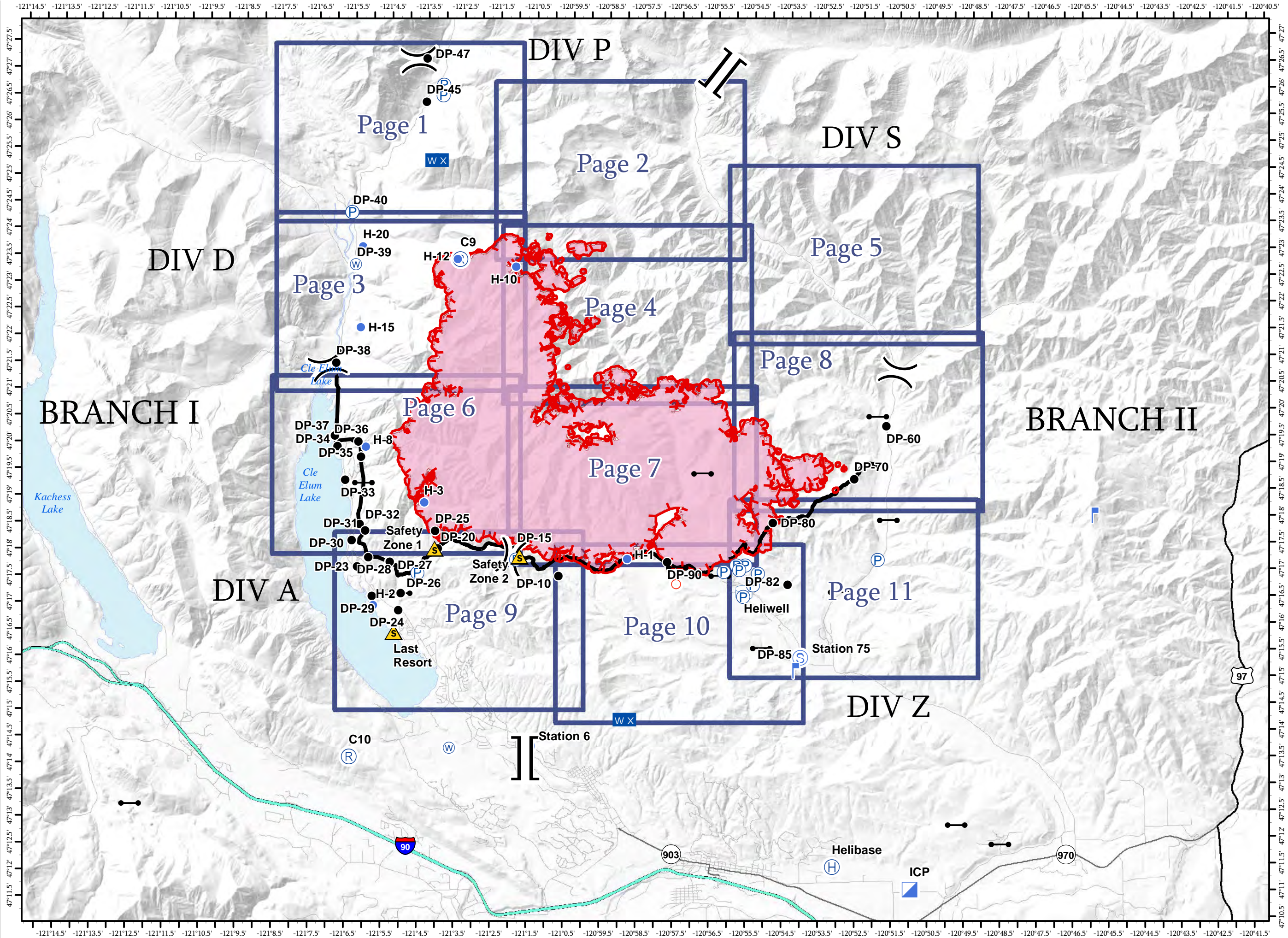
Jolly Mountain Fire
WA-OWF-000361
September 5, 2017

20,975 Acres
Perimeter Flight
9/4/2017 @ 0200 Hrs

- Drop Point
- Gate
- Helibase
- Helispot
- Incident Command Post
- Lookout
- Mobile Weather Unit
- Pump
- Repeater
- Safety Zone
- Spot Fire
- Staging Area
- Water Source
- Water Tank
- Division Break
- Branch Break
- Uncontrolled Fire Edge
- Completed Operational Line



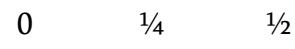
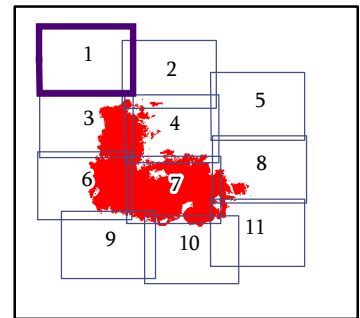
NAD 83 UTM Zone 10N



IAP MAP PAGE 1 OF 11

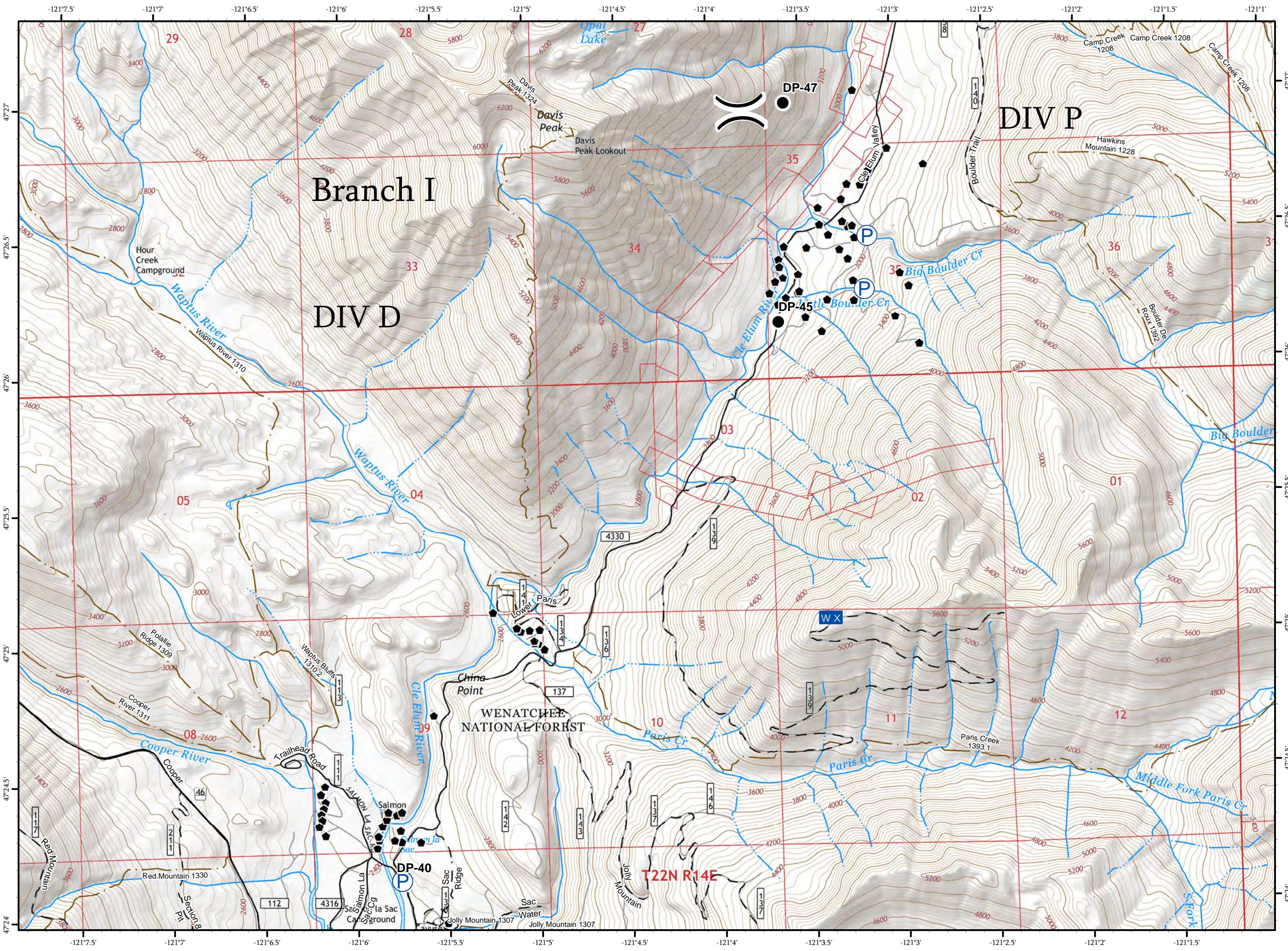
Jolly Mountain Fire
WA-OWF-000361
September 5, 2017
20,975 Acres
IR Flight
9/4/2017 @ 0200 Hrs

- Drop Point
- W X Mobile Weather Unit
- P Pump
- ▲ Triaged Structure
- Roads
- - 4WD/Unimproved
- FS Trails









Miles

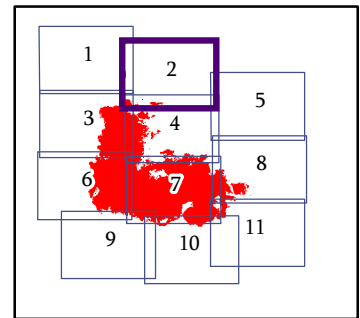
NAD 83 UTM Zone 10N
1:24,000



IAP MAP
PAGE 2 OF 11

Jolly Mountain Fire
WA-OWF-000361
September 5, 2017
20,975 Acres
IR Flight
9/4/2017 @ 0200 Hrs

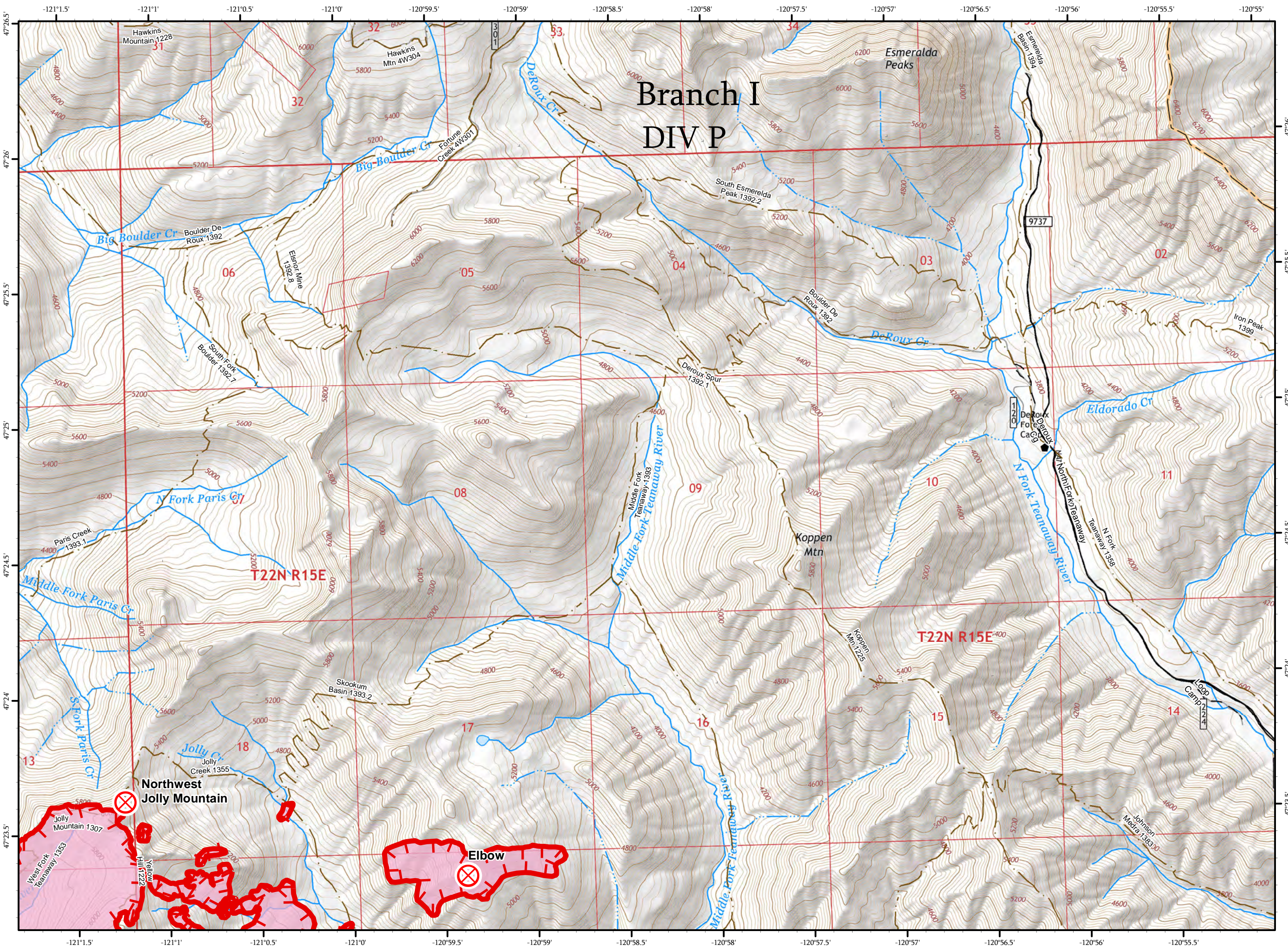
-  Fire Origin
-  Uncontrolled Fire Edge
-  Triaged Structure
-  Roads
-  4WD/Unimproved
-  FS Trails



0 1/4 1/2











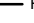


Miles

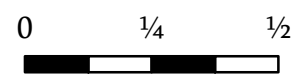
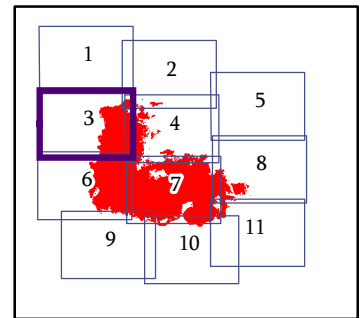
NAD 83 UTM Zone 10N
1:24,000



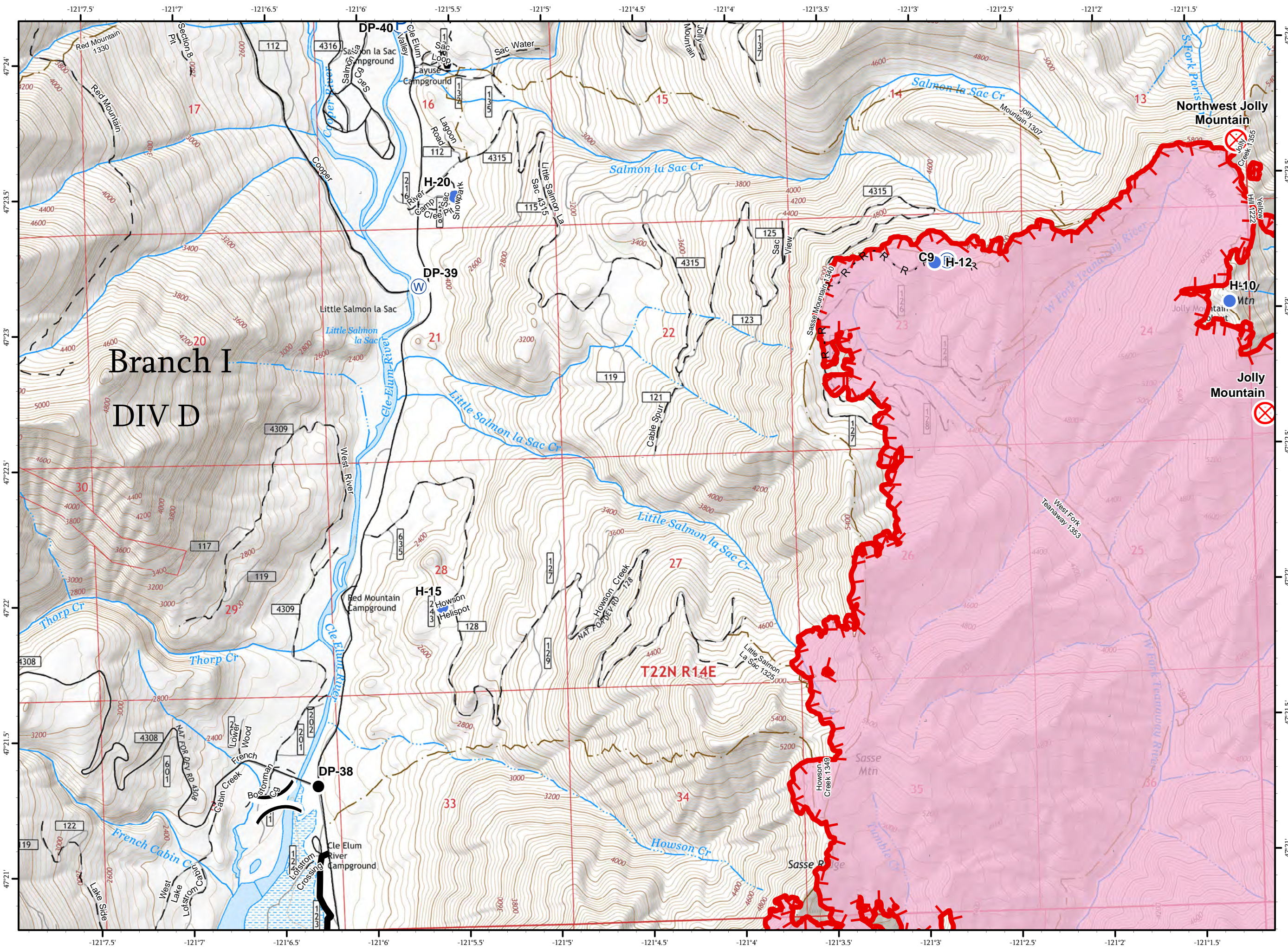
IAP MAP
PAGE 3 OF 11

Jolly Mountain Fire
WA-OWF-000361
September 5, 2017
20,975 Acres
IR Flight
9/4/2017 @ 0200 Hrs

-  Drop Point
-  Fire Origin
-  Helispot
-  Pump
-  Repeater
-  Water Source
-  Completed Operational Line
-  Road as Completed Line
-  Uncontrolled Fire Edge
-  Triaged Structure
-  Roads
-  4WD/Unimproved
-  FS Trails



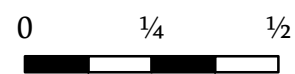
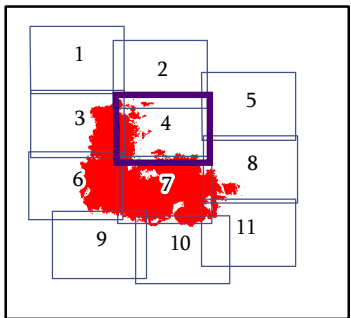
Miles
NAD 83 UTM Zone 10N
1:24,000



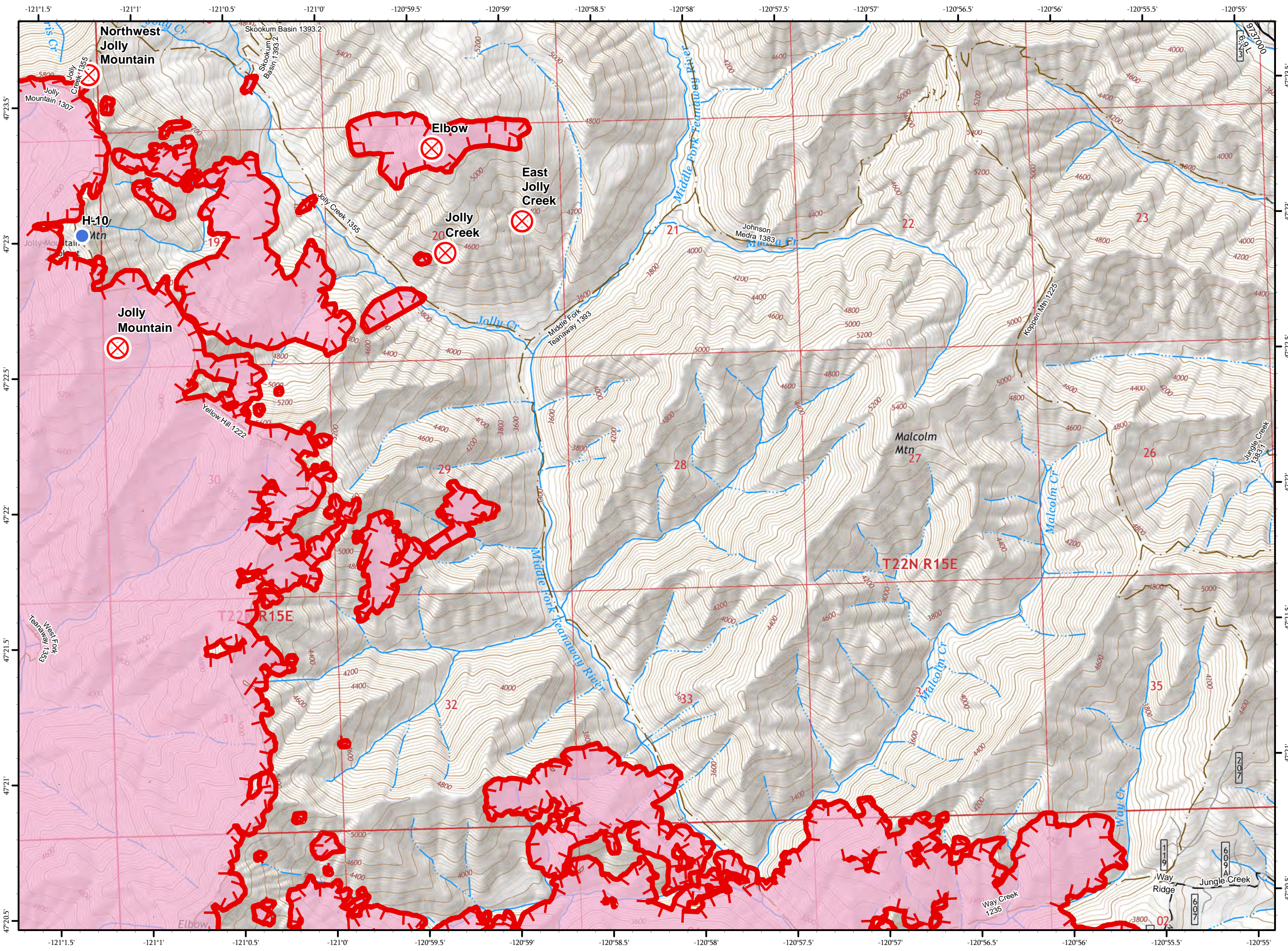
IAP MAP PAGE 4 OF 11

Jolly Mountain Fire
WA-OWF-000361
September 5, 2017
20,975 Acres
IR Flight
9/4/2017 @ 0200 Hrs

-  Fire Origin
-  Helispot
-  Uncontrolled Fire Edge
-  Roads
-  4WD/Unimproved
-  FS Trails



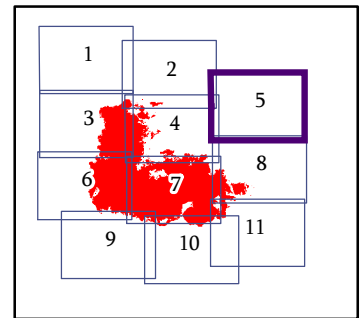
Miles
NAD 83 UTM Zone 10N
1:24,000



IAP MAP
PAGE 5 OF 11

Jolly Mountain Fire
WA-OWF-000361
September 5, 2017
20,975 Acres
IR Flight
9/4/2017 @ 0200 Hrs

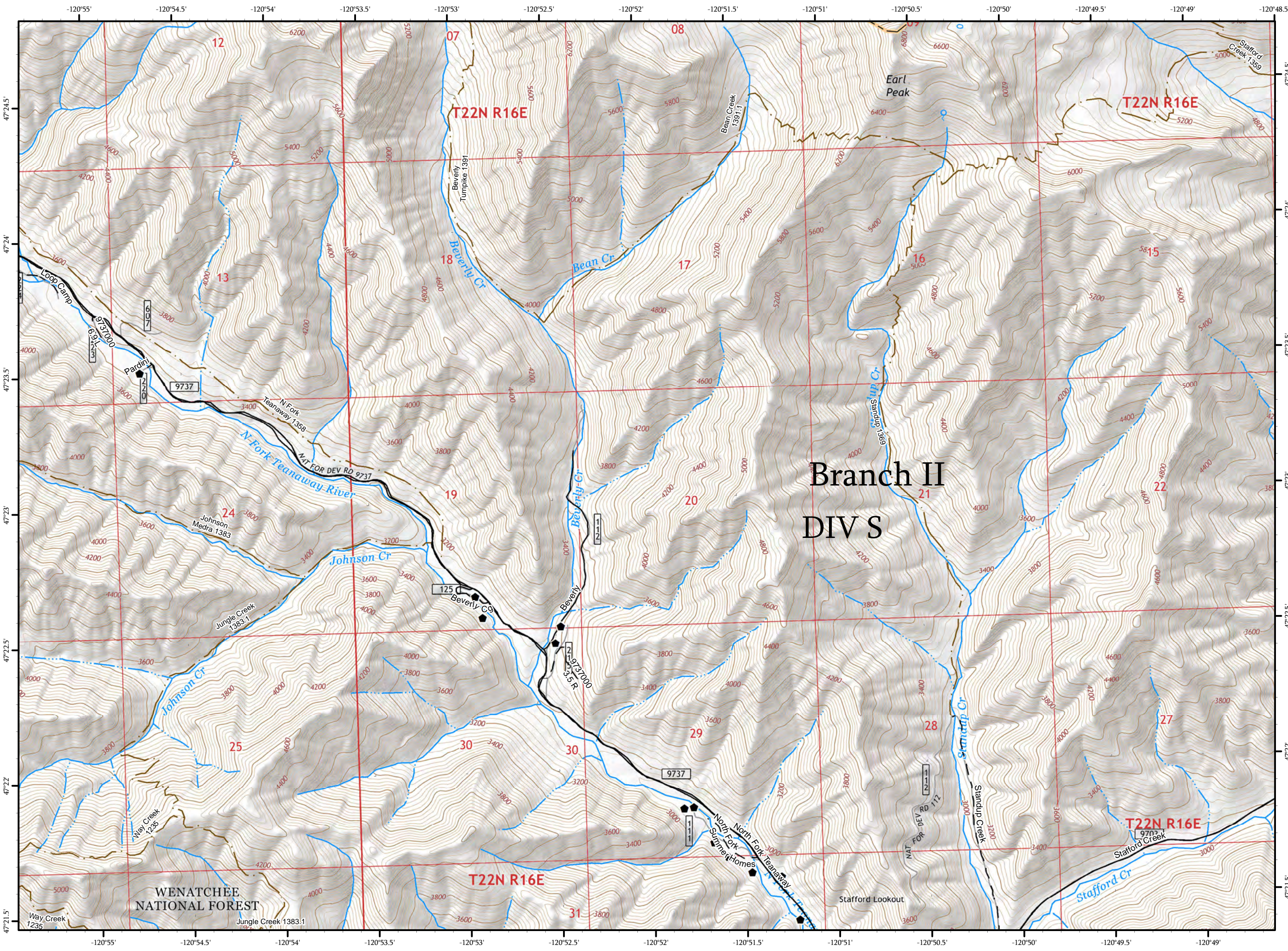
- Triaged Structure
- Roads
- 4WD/Unimproved
- FS Trails



0 1/4 1/2



Miles

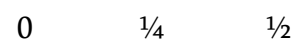
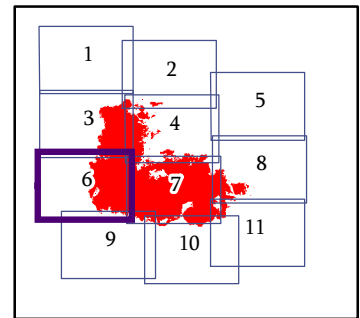
NAD 83 UTM Zone 10N
1:24,000



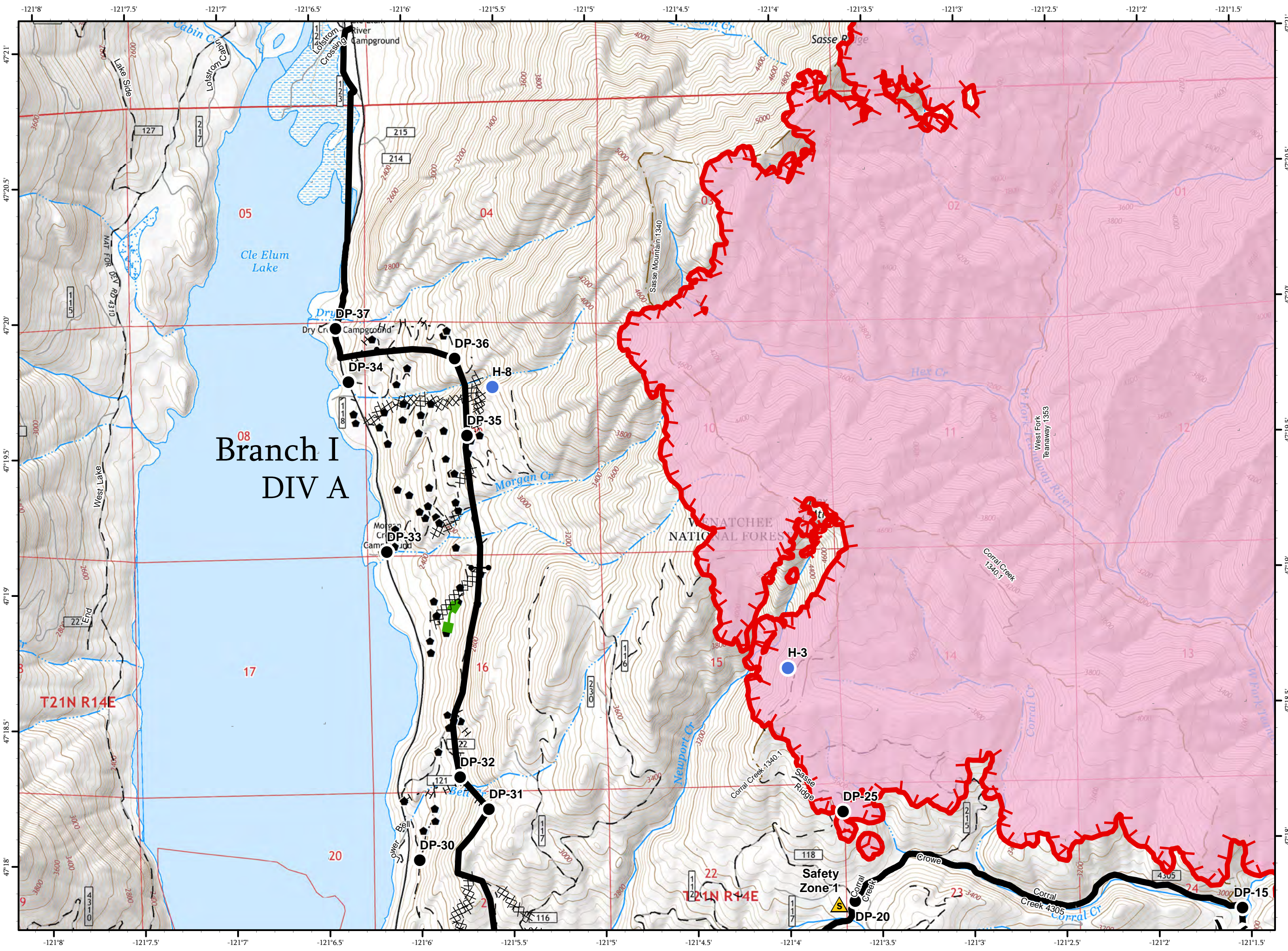
IAP MAP
PAGE 6 OF 11

Jolly Mountain Fire
WA-OWF-000361
September 5, 2017
20,975 Acres
IR Flight
9/4/2017 @ 0200 Hrs

-  Drop Point
-  Gate
-  Helispot
-  Safety Zone
-  Completed Operational Line
-  Completed Dozer Line
-  Completed Hand Line
-  Uncontrolled Fire Edge
-  Escape Route
-  Triaged Structure
-  Roads
-  4WD/Unimproved
-  FS Trails


















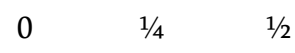
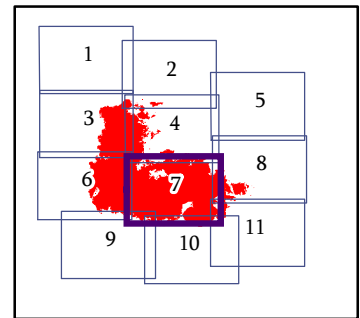
Miles
NAD 83 UTM Zone 10N
1:24,000



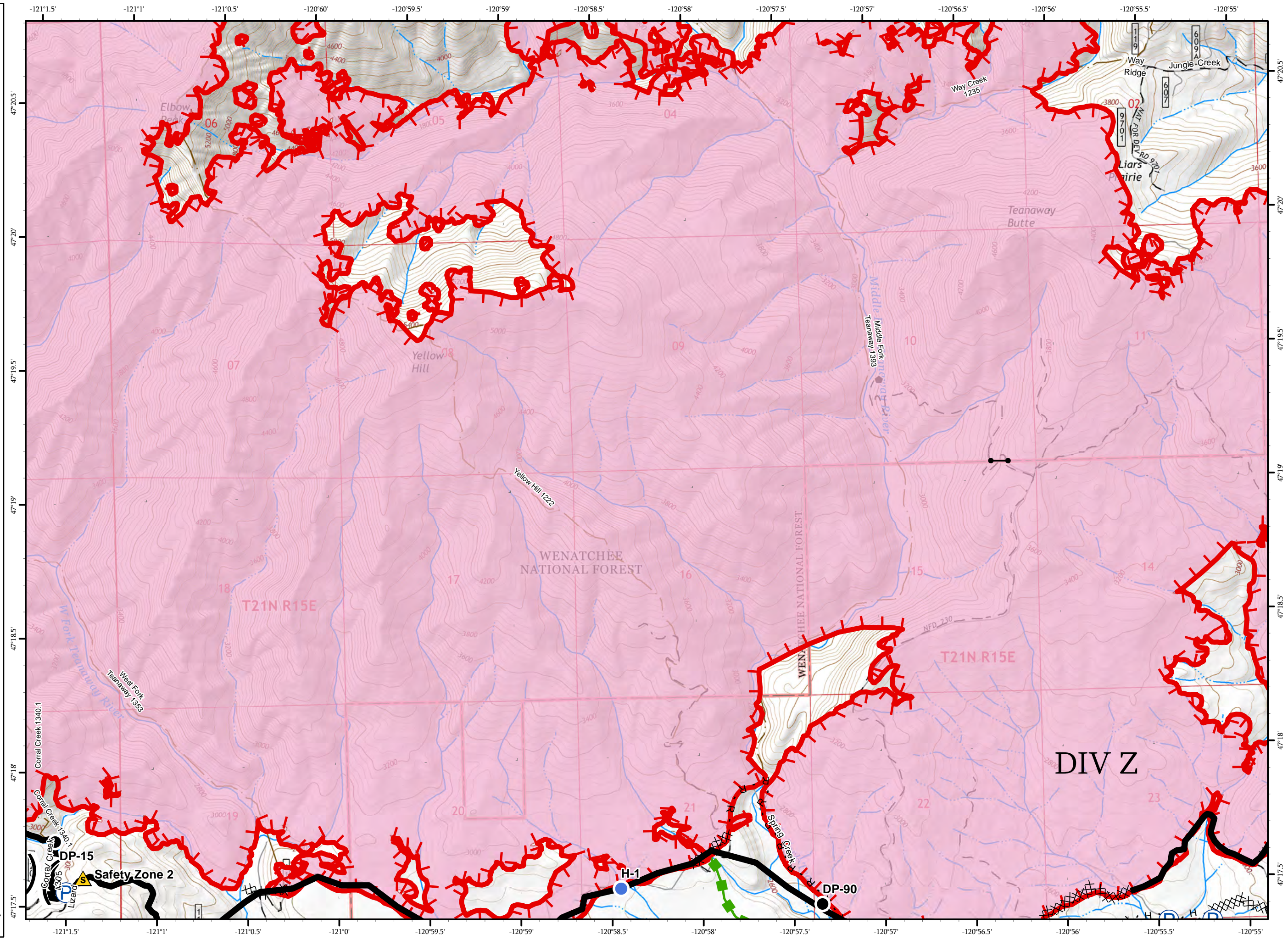
IAP MAP
PAGE 7 OF 11

Jolly Mountain Fire
WA-OWF-000361
September 5, 2017
20,975 Acres
IR Flight
9/4/2017 @ 0200 Hrs

-  Drop Point
-  Gate
-  Helispot
-  Pump
-  Safety Zone
-  Completed Operational Line
-  Completed Dozer Line
-  Completed Hand Line
-  Road as Completed Line
-  Uncontrolled Fire Edge
-  Escape Route
-  Triaged Structure
-  Roads
-  4WD/Unimproved
-  FS Trails



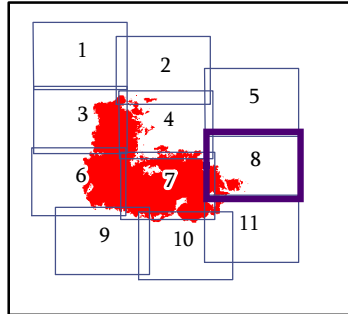
Miles
NAD 83 UTM Zone 10N
1:24,000



IAP MAP PAGE 8 OF 11

Jolly Mountain Fire
WA-OWF-000361
September 5, 2017
20,975 Acres
IR Flight
9/4/2017 @ 0200 Hrs

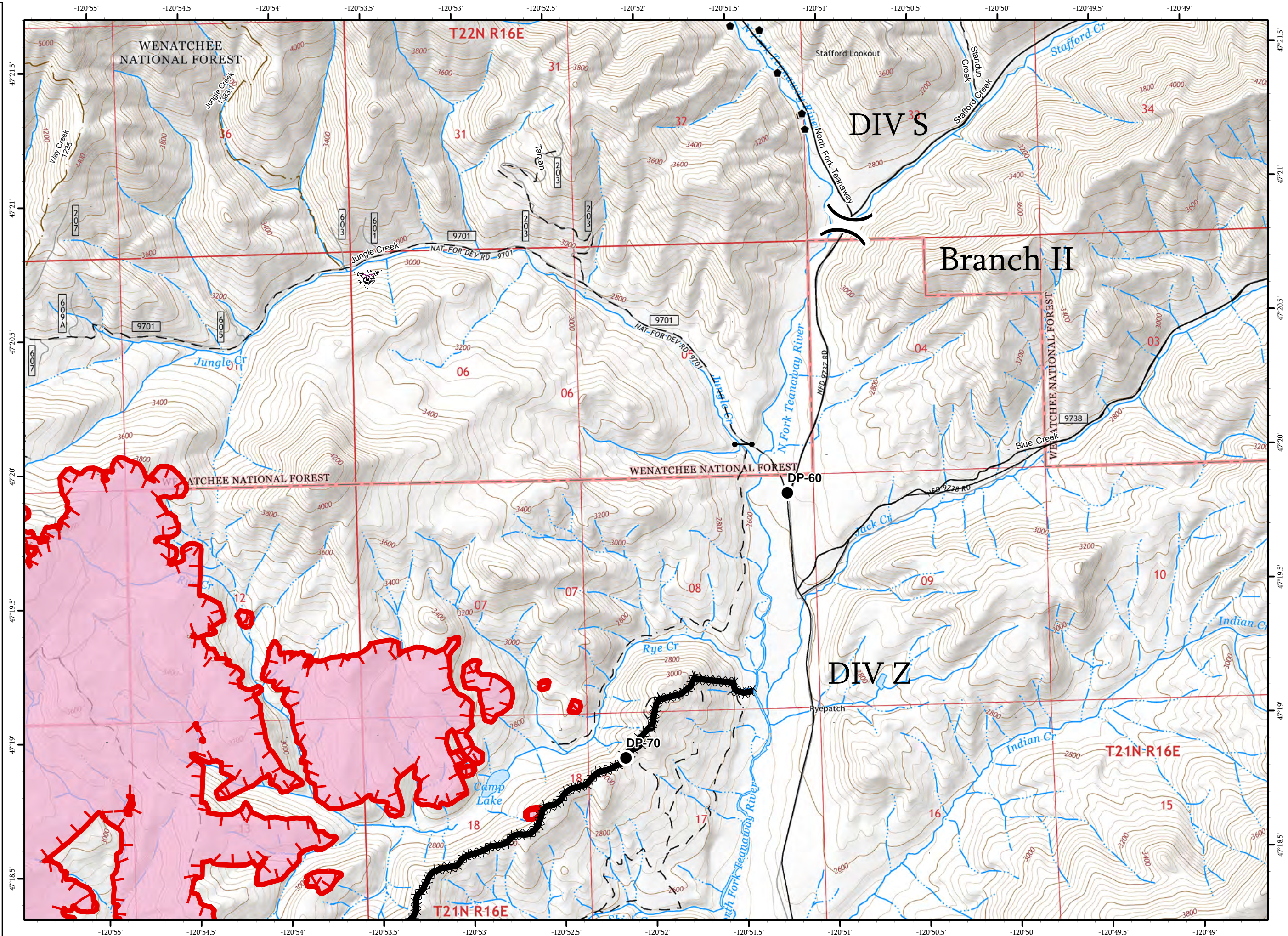
- Drop Point
- Gate
- Completed Operational Line
- XXXX Completed Dozer Line
- Uncontrolled Fire Edge
- Triaged Structure
- Roads
- - 4WD/Unimproved
- - FS Trails



0 1/4 1/2

















Miles

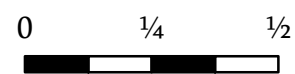
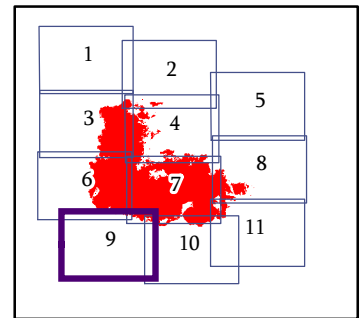
NAD 83 UTM Zone 10N
1:24,000



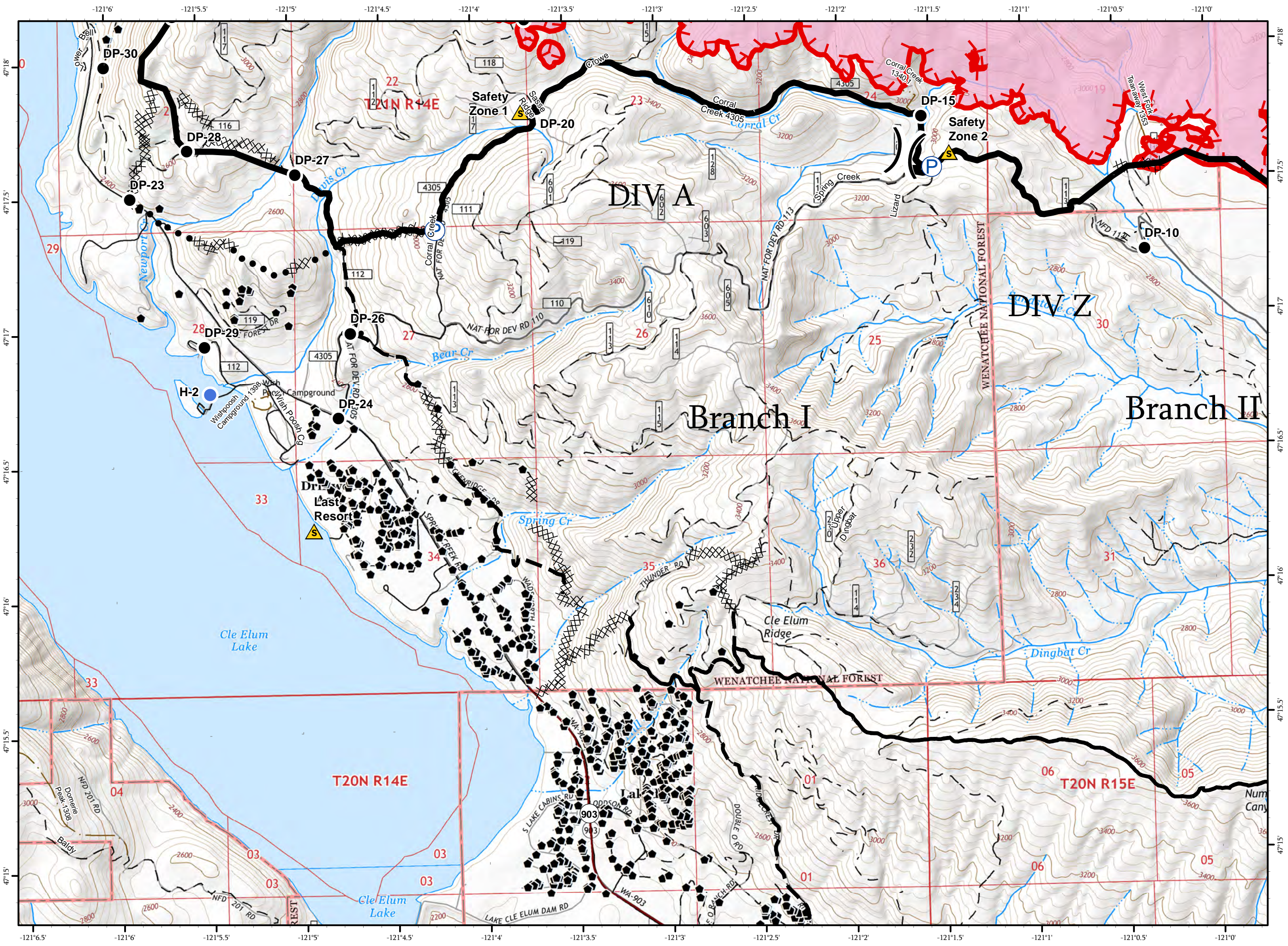
IAP MAP
PAGE 9 OF 11

Jolly Mountain Fire
WA-OWF-000361
September 5, 2017
20,975 Acres
IR Flight
9/4/2017 @ 0200 Hrs

-  Drop Point
-  Gate
-  Helispot
-  Pump
-  Safety Zone
-  Completed Operational Line
-  Completed Dozer Line
-  Completed Hand Line
-  Uncontrolled Fire Edge
-  Proposed Contingency Line
-  Completed Contingency Line
-  Triaged Structure
-  State Hwy
-  Roads
-  4WD/Unimproved
-  FS Trails



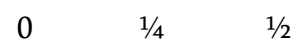
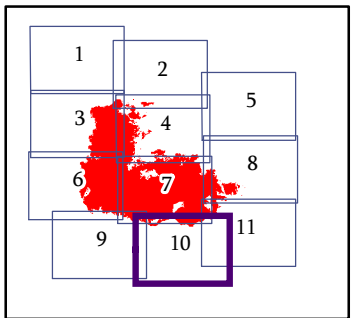
Miles
NAD 83 UTM Zone 10N
1:24,000



IAP MAP
PAGE 10 OF 11

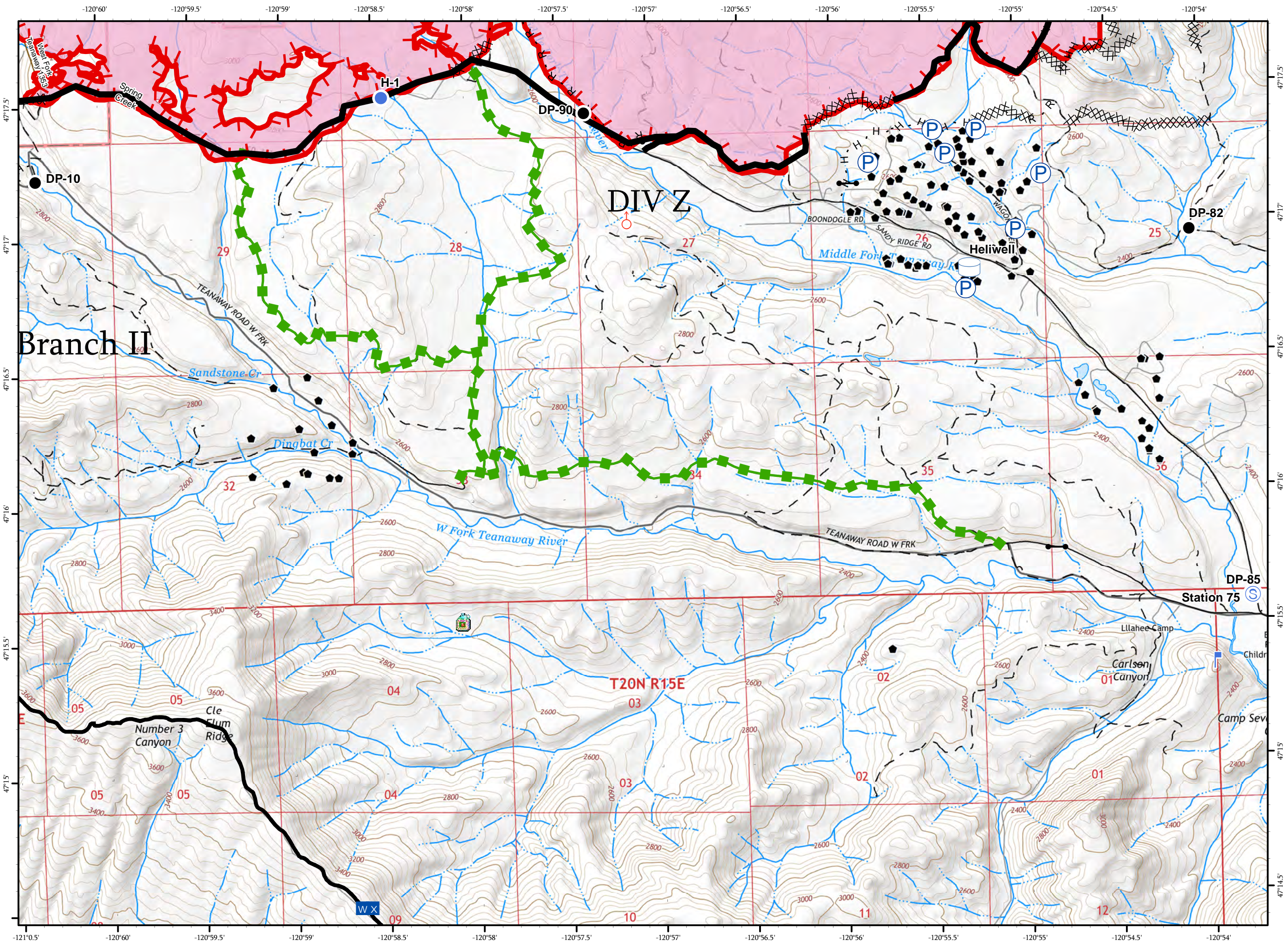
Jolly Mountain Fire
WA-OWF-000361
September 5, 2017
20,975 Acres
IR Flight
9/4/2017 @ 0200 Hrs

- Drop Point
- Gate
- Helispot
- Lookout
- Mobile Weather Unit
- Pump
- Spot Fire
- Staging Area
- Water Tank
- Completed Operational Line
- Completed Dozer Line
- Completed Hand Line
- Road as Completed Line
- Uncontrolled Fire Edge
- Proposed Contingency Line
- Escape Route
- Triaged Structure
- Roads
- 4WD/Unimproved
- FS Trails



Miles

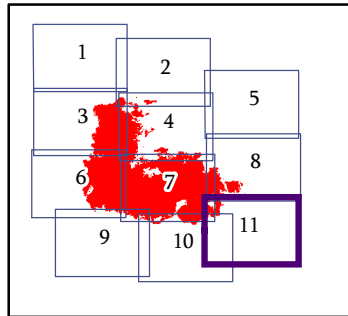
NAD 83 UTM Zone 10N
1:24,000



IAP MAP
PAGE 11 OF 11

Jolly Mountain Fire
WA-OWF-000361
September 5, 2017
20,975 Acres
IR Flight
9/4/2017 @ 0200 Hrs

- Drop Point
- Gate
- Lookout
- Pump
- Staging Area
- Water Tank
- Completed Operational Line
- Completed Dozer Line
- Completed Hand Line
- Road as Completed Line
- Uncontrolled Fire Edge
- Escape Route
- Triaged Structure
- Roads
- 4WD/Unimproved



0 1/4 1/2

Miles

NAD 83 UTM Zone 10N

1:24,000

