



IAP MAP INDEX

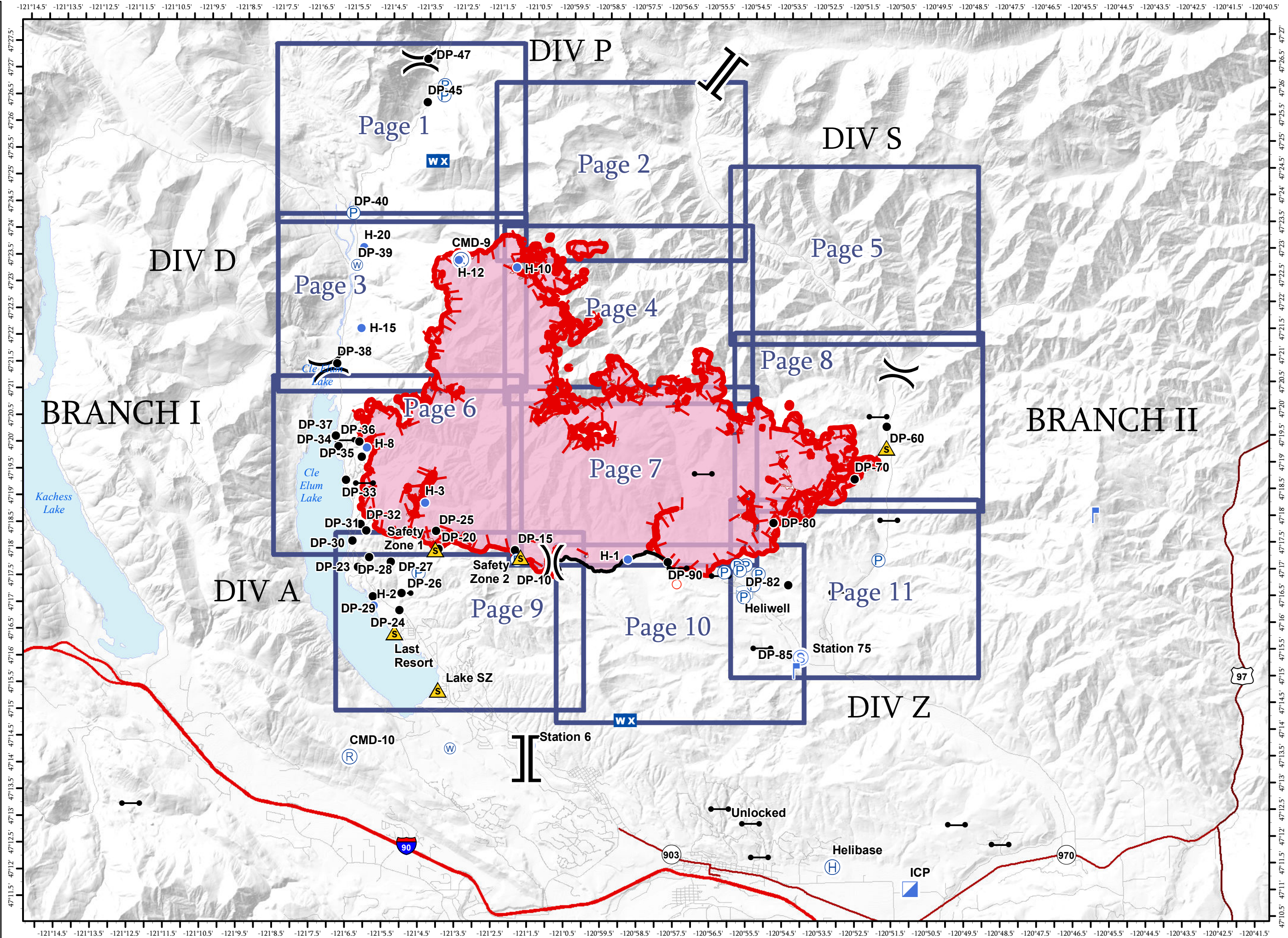
Jolly Mountain Fire
WA-OWF-000361
September 7, 2017

24,514 Acres
Perimeter Flight
9/6/2017 @ 0130 Hrs

- Drop Point
- Gate
- Helibase
- Helispot
- Incident Command Post
- Lookout
- Mobile Weather Unit
- Pump
- Repeater
- Safety Zone
- Spot Fire
- Staging Area
- Water Source
- Water Tank
- Division Break
- Branch Break
- Uncontrolled Fire Edge
- Completed Line



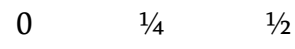
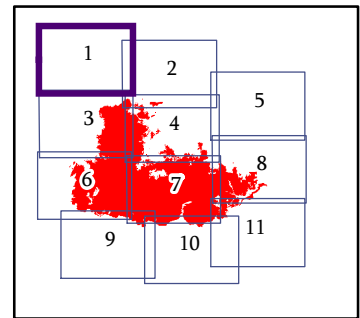
NAD 83 UTM Zone 10N



IAP MAP
PAGE 1 OF 11

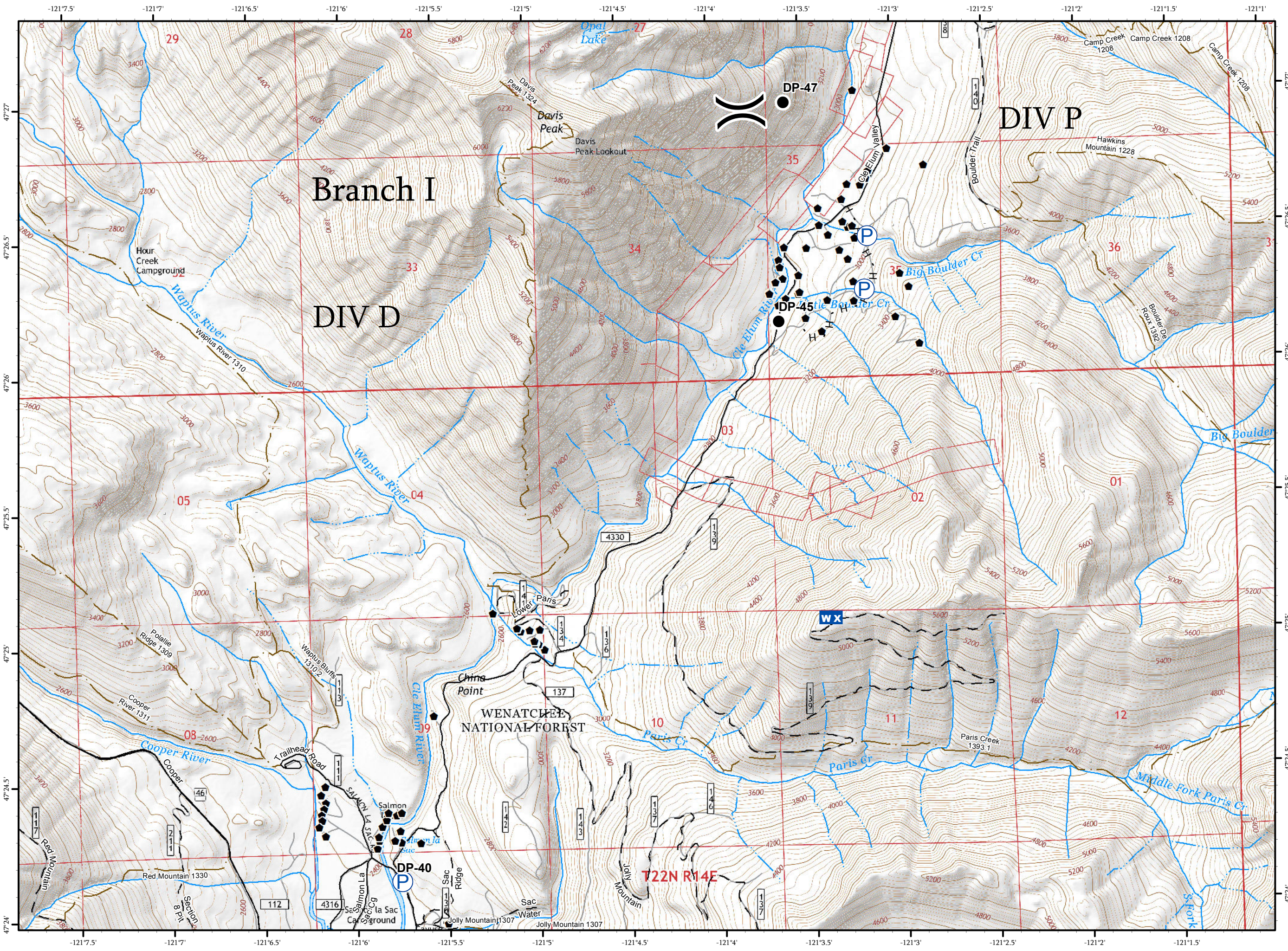
Jolly Mountain Fire
WA-OWF-000361
September 7, 2017
24,514 Acres
IR Flight
9/6/2017 @ 0130 Hrs

- Drop Point
- WX Mobile Weather Unit
- P Pump
- H - Completed Hand Line
- ▲ Triaged Structure
- Roads
- - 4WD/Unimproved
- FS Trails









Miles

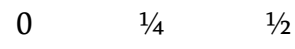
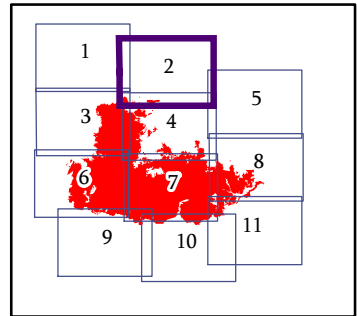
NAD 83 UTM Zone 10N
1:24,000



IAP MAP
PAGE 2 OF 11

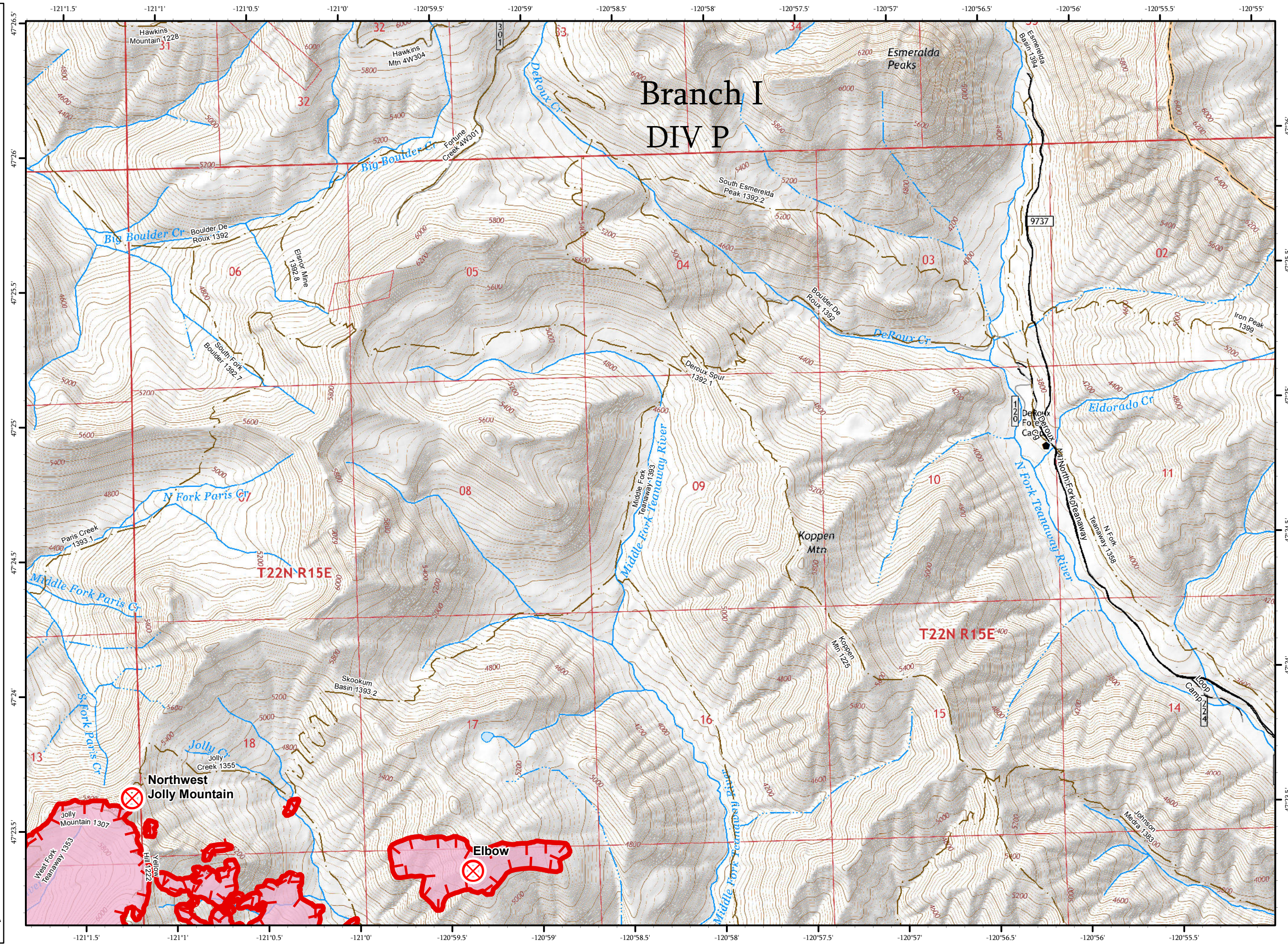
Jolly Mountain Fire
WA-OWF-000361
September 7, 2017
24,514 Acres
IR Flight
9/6/2017 @ 0130 Hrs

-  Fire Origin
-  Uncontrolled Fire Edge
-  Triaged Structure
-  Roads
-  4WD/Unimproved
-  FS Trails
















Miles

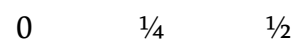
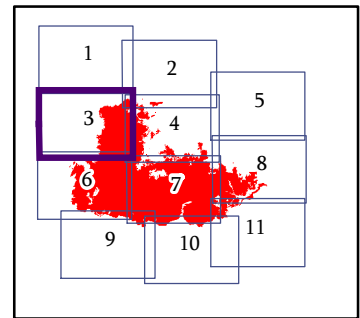
NAD 83 UTM Zone 10N
1:24,000



IAP MAP
PAGE 3 OF 11

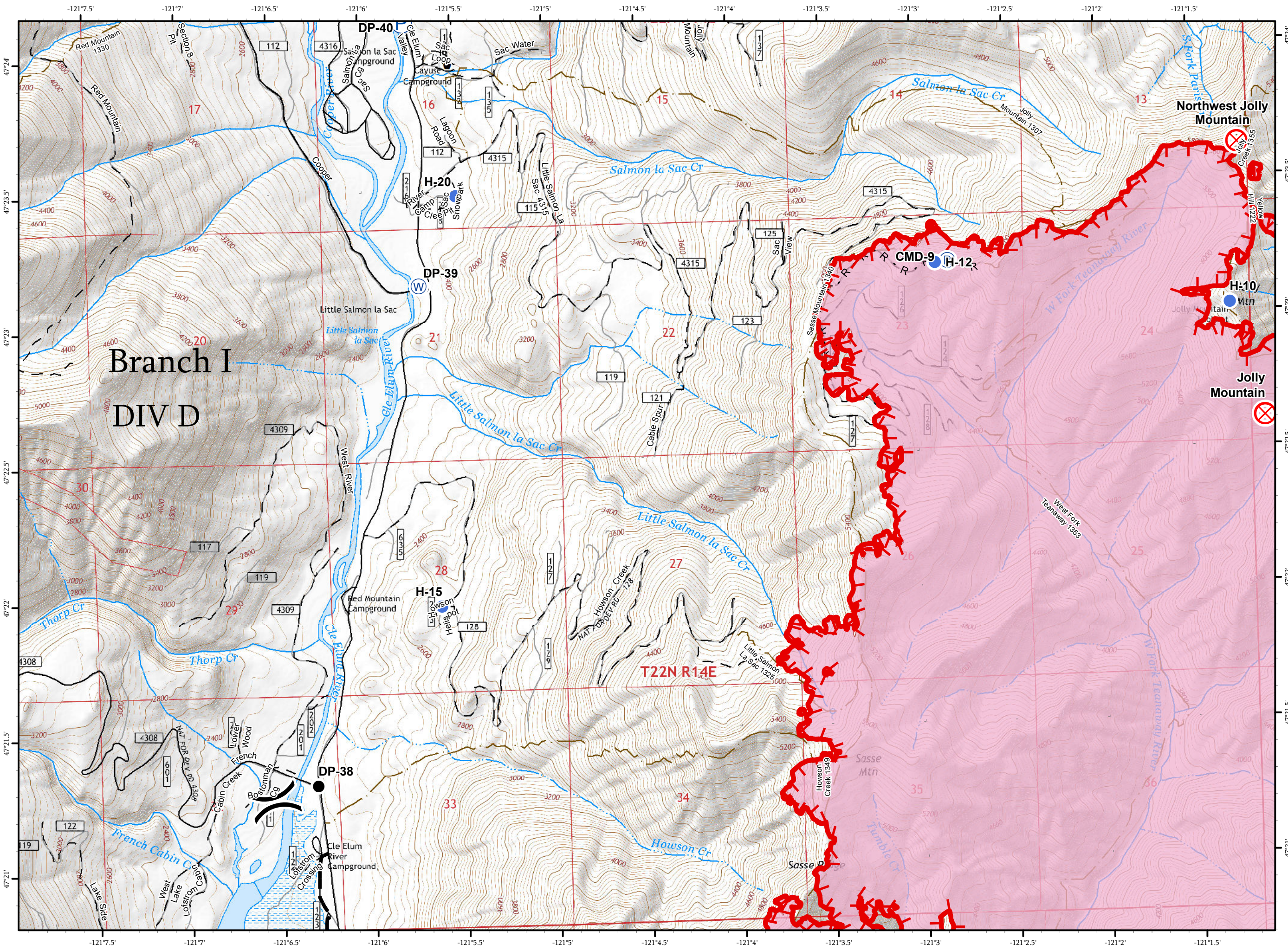
Jolly Mountain Fire
WA-OWF-000361
September 7, 2017
24,514 Acres
IR Flight
9/6/2017 @ 0130 Hrs

-  Drop Point
-  Fire Origin
-  Helispot
-  Pump
-  Repeater
-  Water Source
-  Uncontrolled Fire Edge
-  R - Road as Completed Line
-  Planned Fire Line
-  Triaged Structure
-  Roads
-  4WD/Unimproved
-  FS Trails



Miles

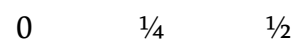
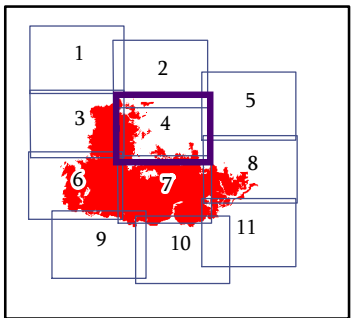
NAD 83 UTM Zone 10N
1:24,000



IAP MAP
PAGE 4 OF 11

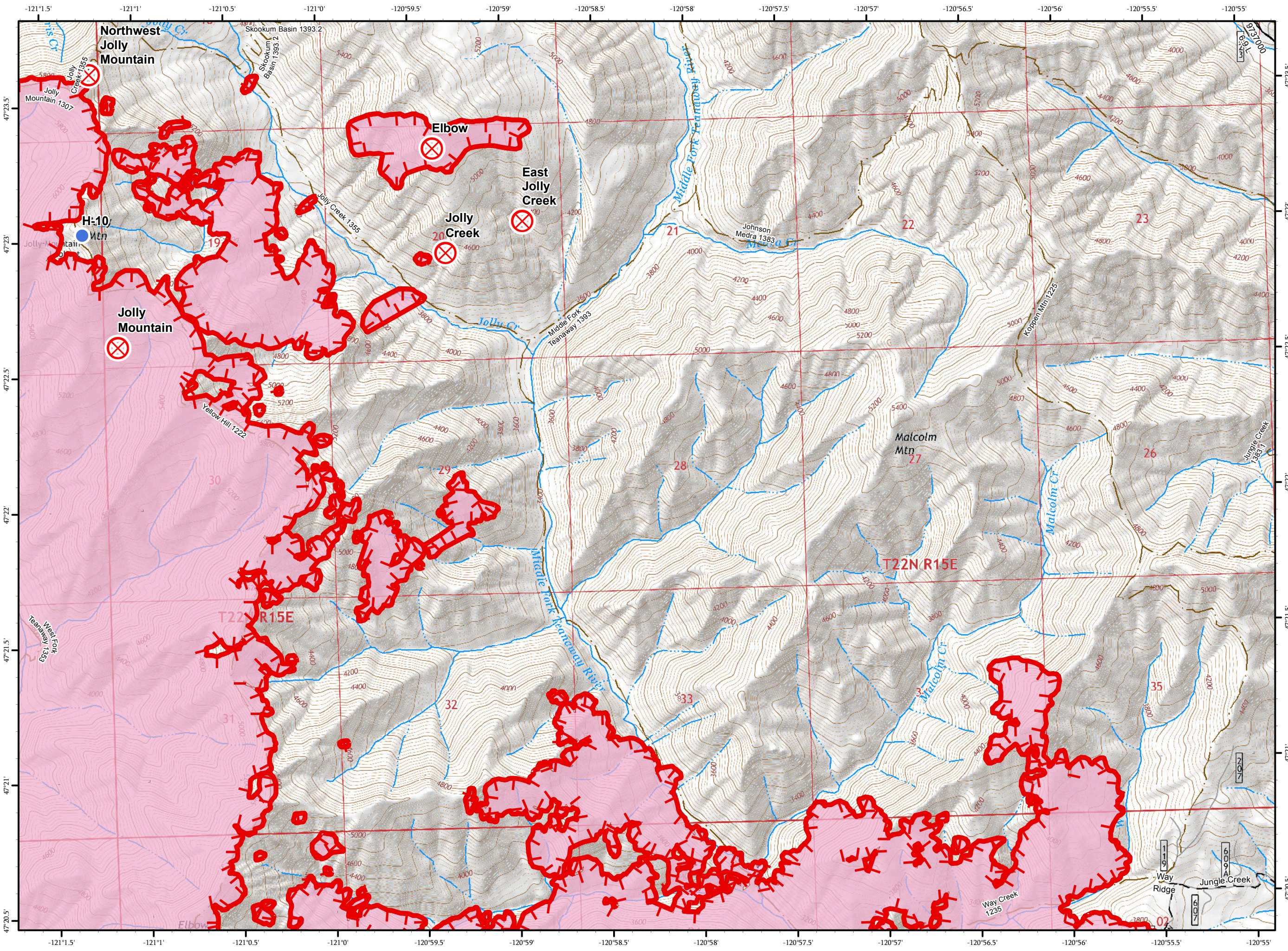
Jolly Mountain Fire
WA-OWF-000361
September 7, 2017
24,514 Acres
IR Flight
9/6/2017 @ 0130 Hrs

-  Fire Origin
-  Helispot
-  Uncontrolled Fire Edge
-  Roads
-  4WD/Unimproved
-  FS Trails



Miles

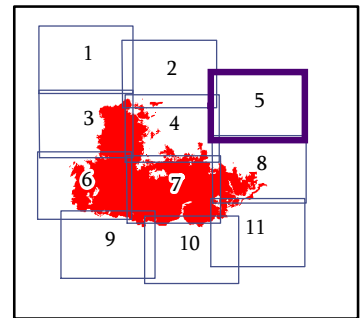
NAD 83 UTM Zone 10N
1:24,000



IAP MAP
PAGE 5 OF 11

Jolly Mountain Fire
WA-OWF-000361
September 7, 2017
24,514 Acres
IR Flight
9/6/2017 @ 0130 Hrs

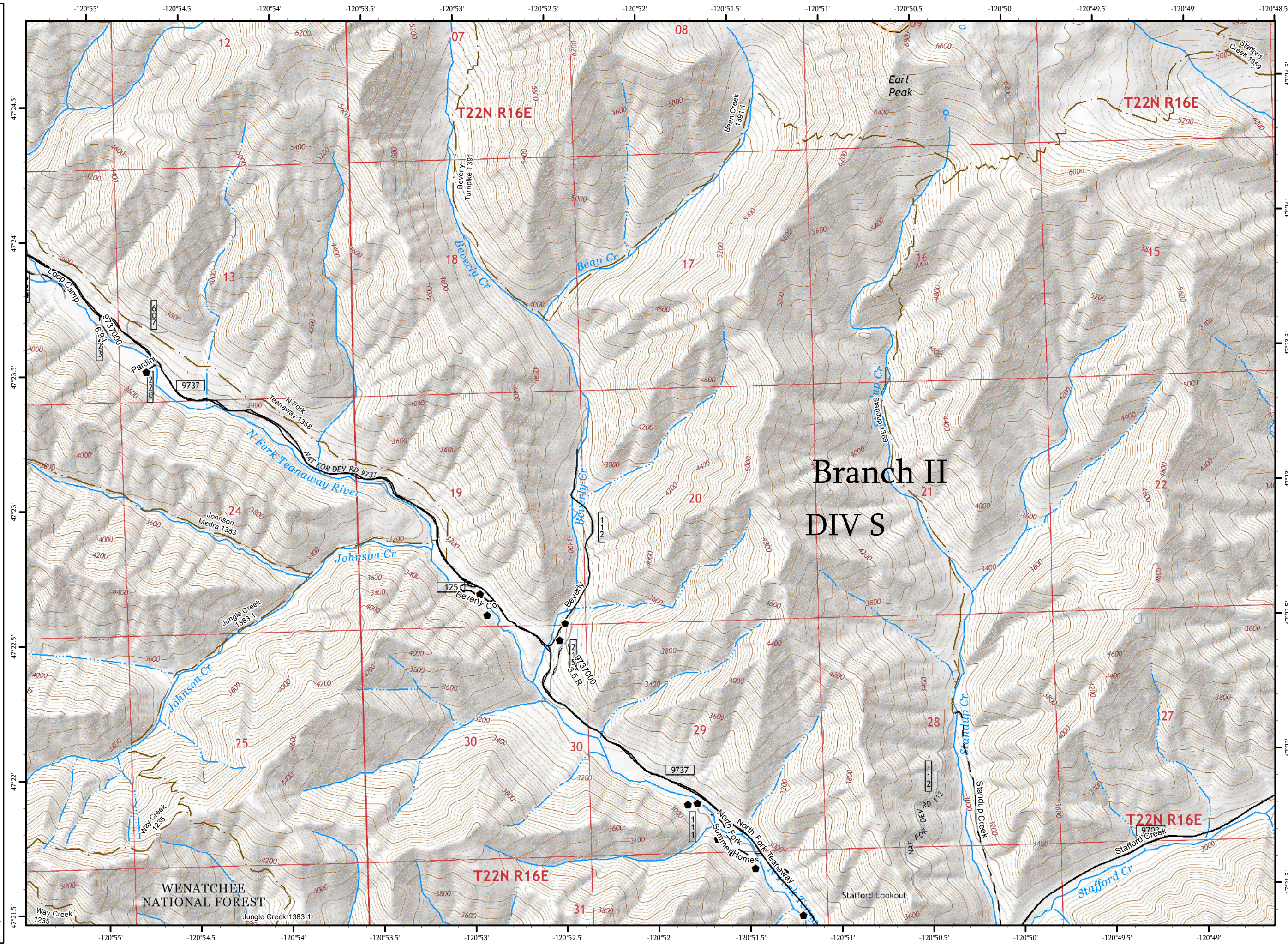
- Triaged Structure
- Roads
- 4WD/Unimproved
- FS Trails



0 1/4 1/2







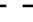


Miles

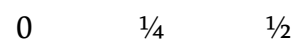
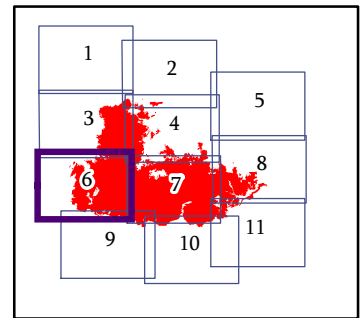
NAD 83 UTM Zone 10N
1:24,000



IAP MAP
PAGE 6 OF 11

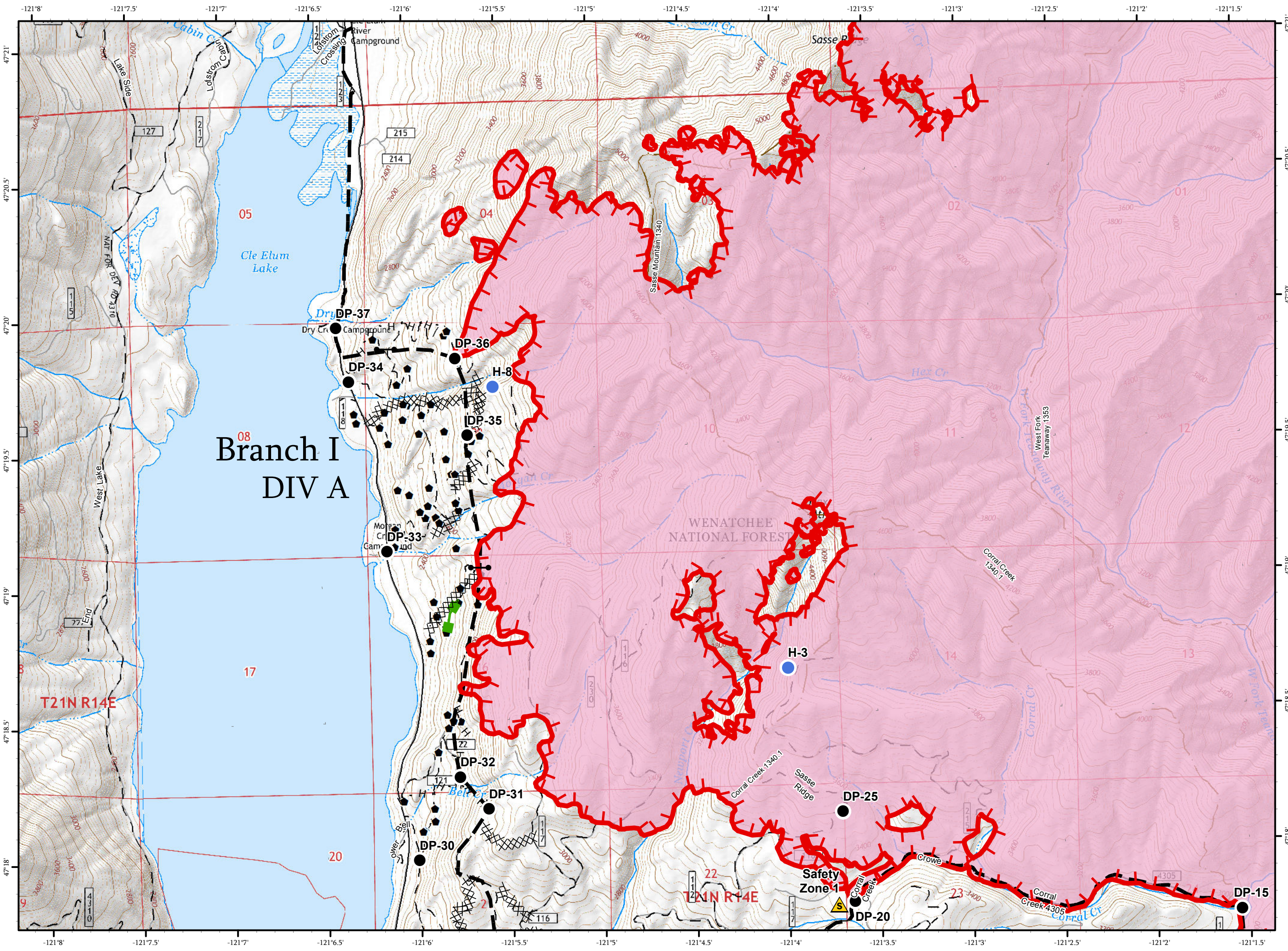
Jolly Mountain Fire
WA-OWF-000361
September 7, 2017
24,514 Acres
IR Flight
9/6/2017 @ 0130 Hrs

-  Drop Point
-  Gate
-  Helispot
-  Safety Zone
-  Uncontrolled Fire Edge
-  Completed Dozer Line
-  Completed Hand Line
-  Planned Fire Line
-  Escape Route
-  Triaged Structure
-  Roads
-  4WD/Unimproved
-  FS Trails












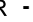



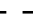

Miles

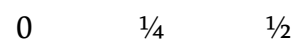
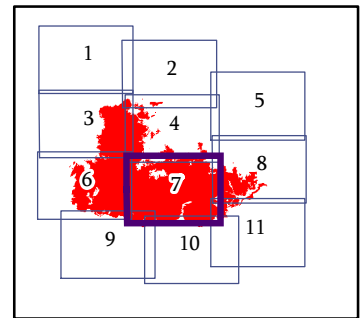
NAD 83 UTM Zone 10N
1:24,000



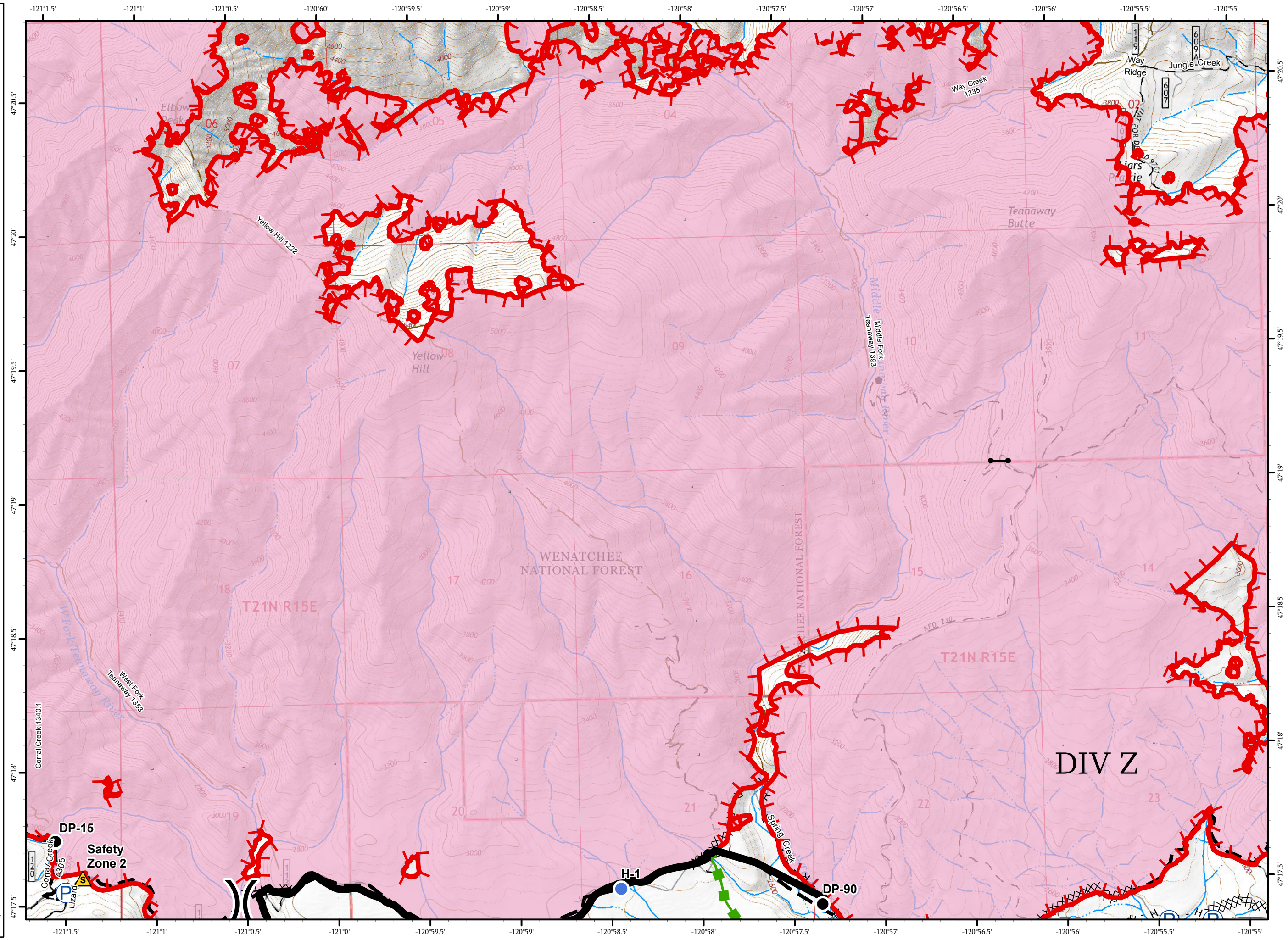
IAP MAP PAGE 7 OF 11

Jolly Mountain Fire
WA-OWF-000361
September 7, 2017
24,514 Acres
IR Flight
9/6/2017 @ 0130 Hrs

-  Drop Point
-  Gate
-  Helispot
-  Pump
-  Safety Zone
-  Uncontrolled Fire Edge
-  Completed Line
-  Completed Dozer Line
-  H - Completed Hand Line
-  R - Road as Completed Line
-  Planned Fire Line
-  Escape Route
-  Triaged Structure
-  Roads
-  4WD/Unimproved
-  FS Trails



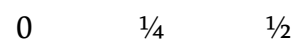
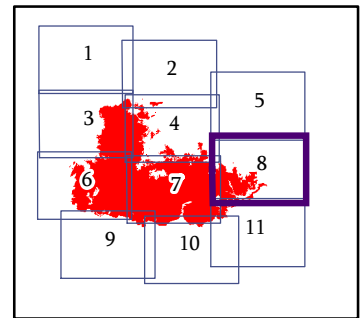
Miles
NAD 83 UTM Zone 10N
1:24,000



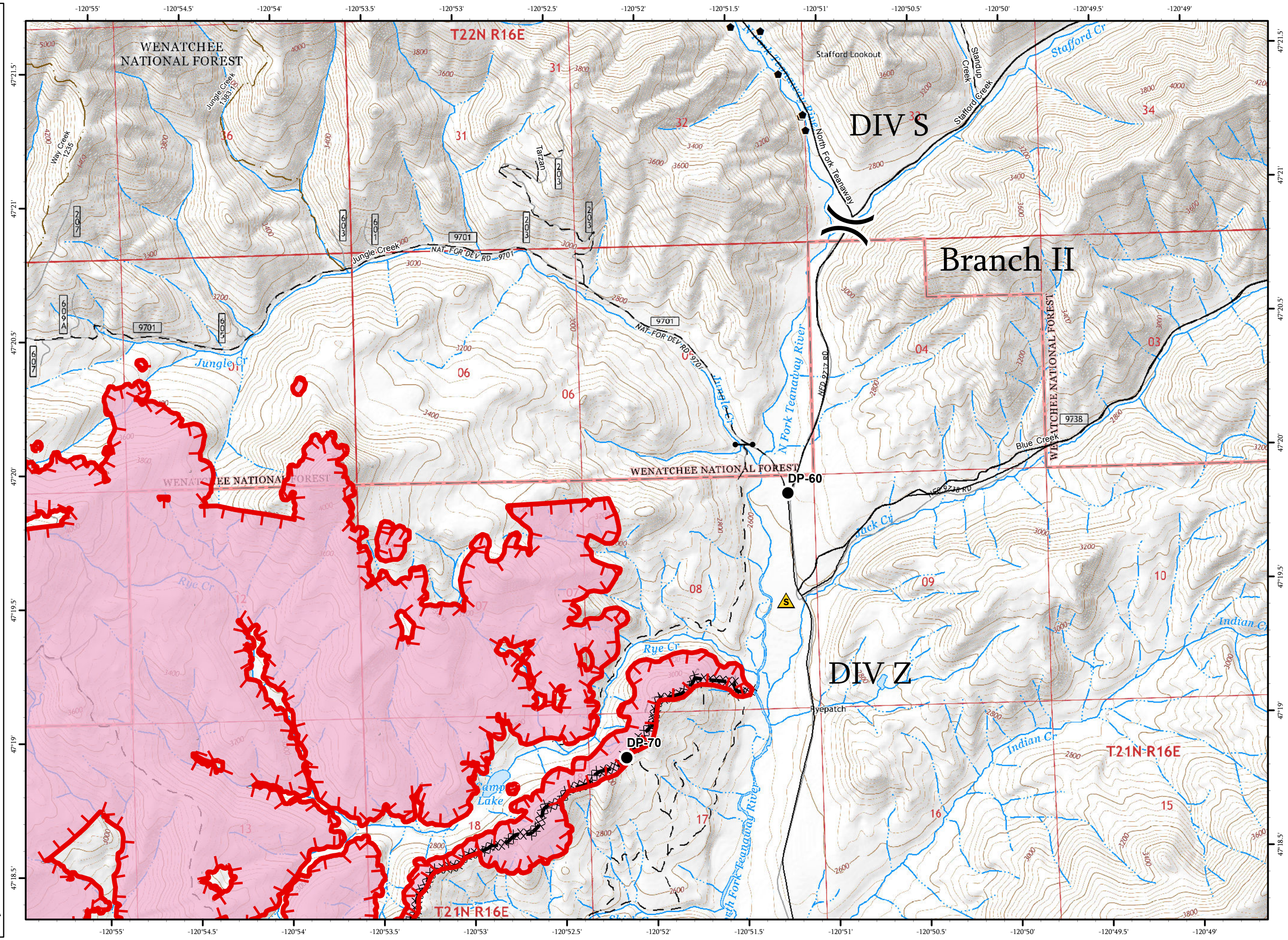
IAP MAP
PAGE 8 OF 11

Jolly Mountain Fire
WA-OWF-000361
September 7, 2017
24,514 Acres
IR Flight
9/6/2017 @ 0130 Hrs

- Drop Point
- Gate
- ▲ Safety Zone
- Uncontrolled Fire Edge
- XXXX Completed Dozer Line
- Planned Fire Line
- Triaged Structure
- Roads
- - 4WD/Unimproved
- FS Trails





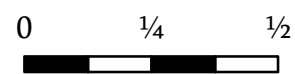
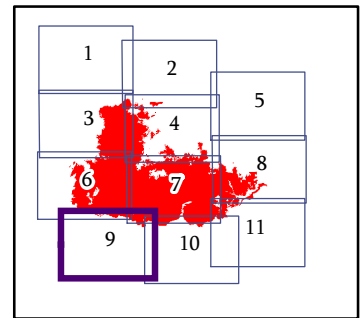
Miles
NAD 83 UTM Zone 10N
1:24,000



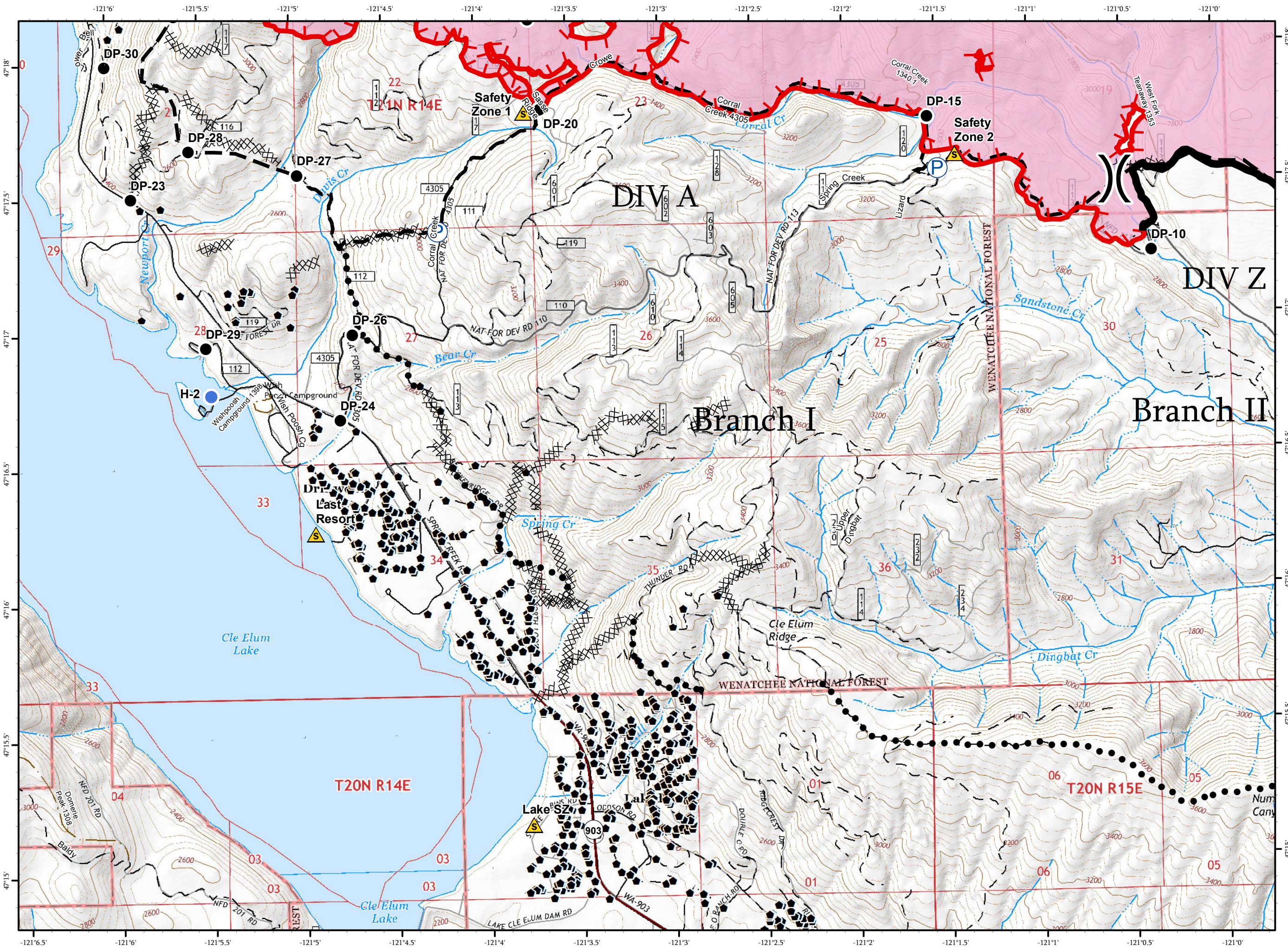
IAP MAP
PAGE 9 OF 11

Jolly Mountain Fire
WA-OWF-000361
September 7, 2017
24,514 Acres
IR Flight
9/6/2017 @ 0130 Hrs

-  Drop Point
-  Gate
-  Helispot
-  Pump
-  Safety Zone
-  Uncontrolled Fire Edge
-  Completed Line
-  Completed Dozer Line
-  H - Completed Hand Line
-  Planned Fire Line
-  Planned Secondary Line
-  Triaged Structure
-  State Hwy
-  Roads
-  4WD/Unimproved
-  FS Trails



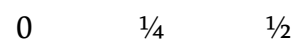
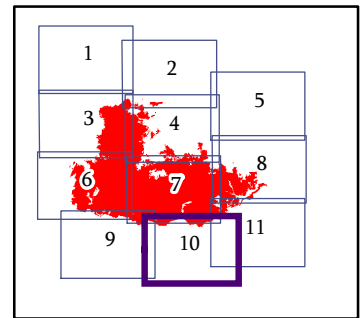
Miles
NAD 83 UTM Zone 10N
1:24,000



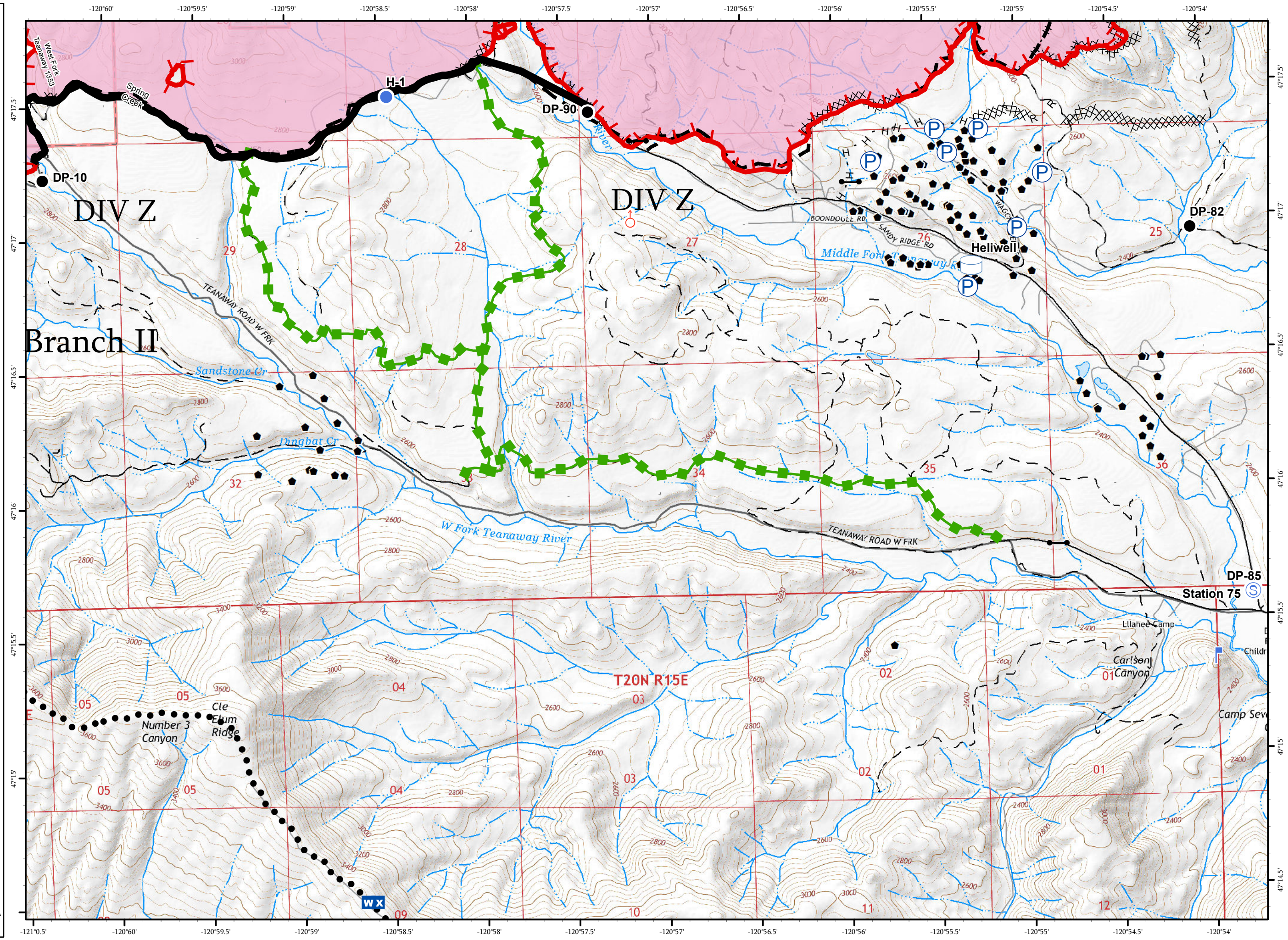
IAP MAP
PAGE 10 OF 11

Jolly Mountain Fire
WA-OWF-000361
September 7, 2017
24,514 Acres
IR Flight
9/6/2017 @ 0130 Hrs

- Drop Point
- Gate
- Helispot
- Lookout
- WX Mobile Weather Unit
- P Pump
- ♂ Spot Fire
- S Staging Area
- Water Tank
- Uncontrolled Fire Edge
- Completed Line
- Completed Dozer Line
- H - Completed Hand Line
- R - Road as Completed Line
- Planned Fire Line
- Planned Secondary Line
- Escape Route
- Triaged Structure
- Roads
- 4WD/Unimproved
- FS Trails








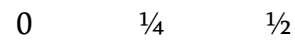
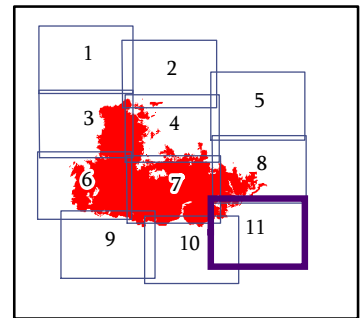
Miles
NAD 83 UTM Zone 10N
1:24,000



IAP MAP
PAGE 11 OF 11

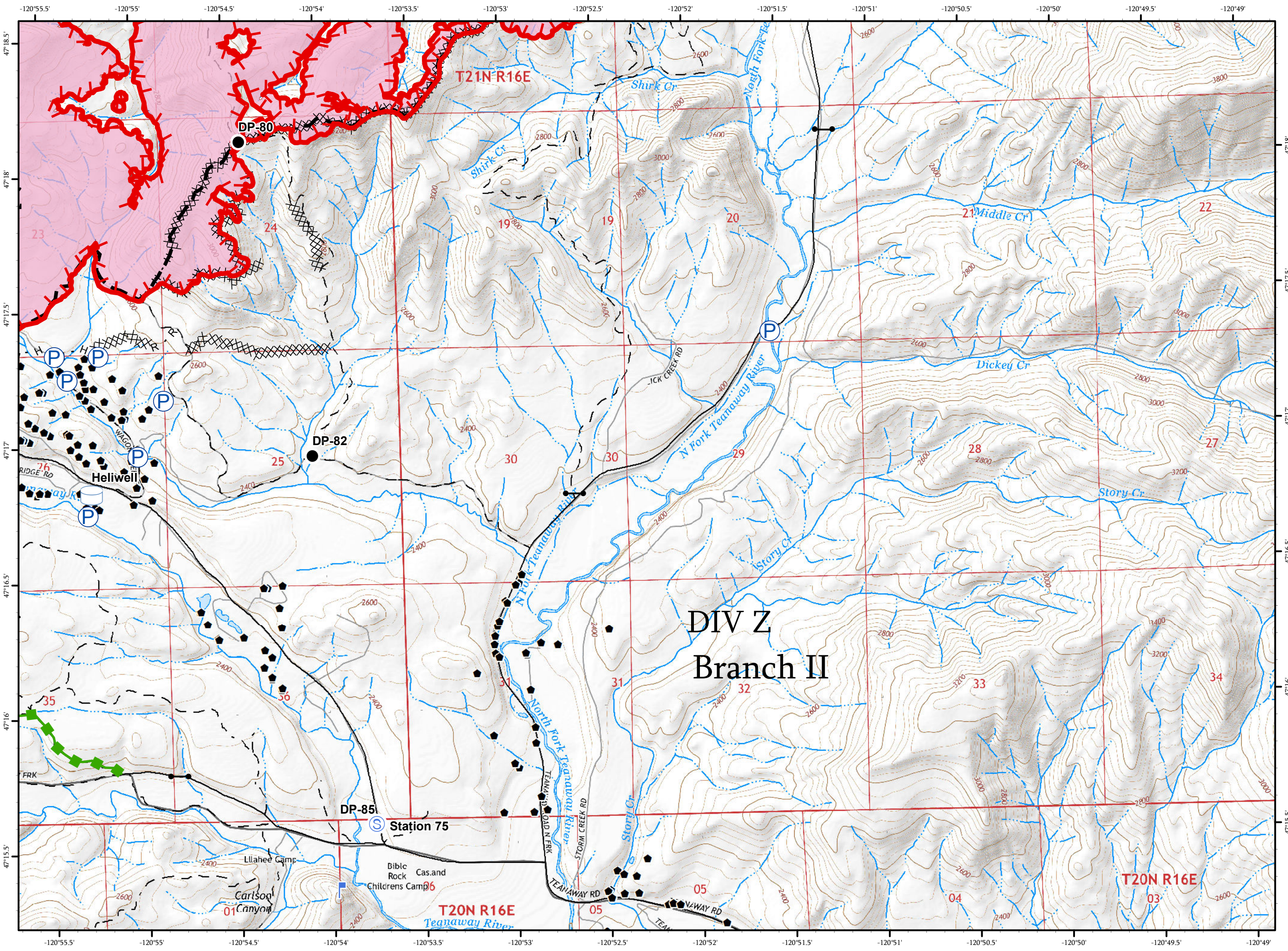
Jolly Mountain Fire
WA-OWF-000361
September 7, 2017
24,514 Acres
IR Flight
9/6/2017 @ 0130 Hrs

-  Drop Point
-  Gate
-  Lookout
-  Pump
-  Staging Area
-  Water Tank
-  Uncontrolled Fire Edge
-  Completed Dozer Line
-  Completed Hand Line
-  Road as Completed Line
-  Planned Fire Line
-  Escape Route
-  Triaged Structure
-  Roads
-  4WD/Unimproved



Miles

NAD 83 UTM Zone 10N
1:24,000



DIV Z
Branch II

T20N R16E

T20N R16E
Teanaway River