

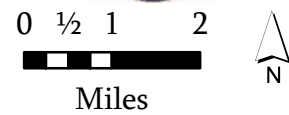


# IAP MAP INDEX

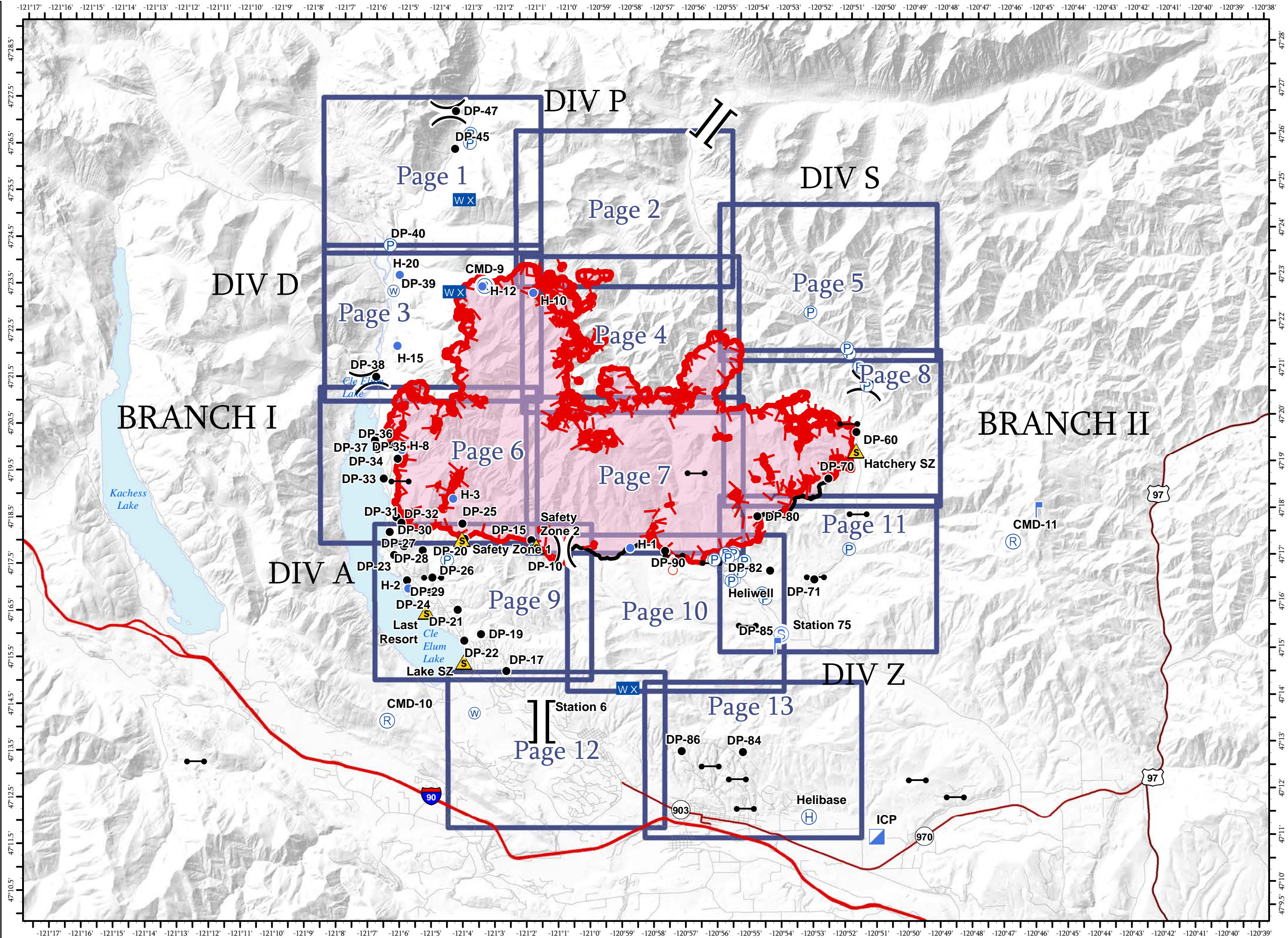
Jolly Mountain Fire  
WA-OWF-000361  
September 10, 2017

27,412 Acres  
Perimeter Flight  
9/9/2017 @ 0200 Hrs

- Drop Point
- Gate
- Helibase
- Helispot
- Incident Command Post
- Lookout
- Mobile Weather Unit
- Pump
- Repeater
- Safety Zone
- Spot Fire
- Staging Area
- Water Source
- Water Tank
- Division Break
- Branch Break
- Uncontrolled Fire Edge
- Completed Line



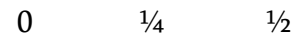
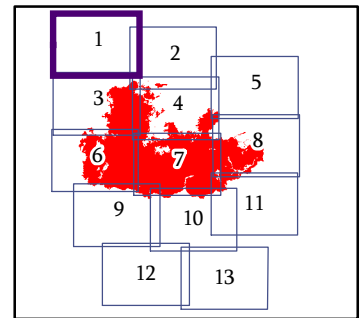
NAD 83 UTM Zone 10N



IAP MAP  
PAGE 1 OF 13

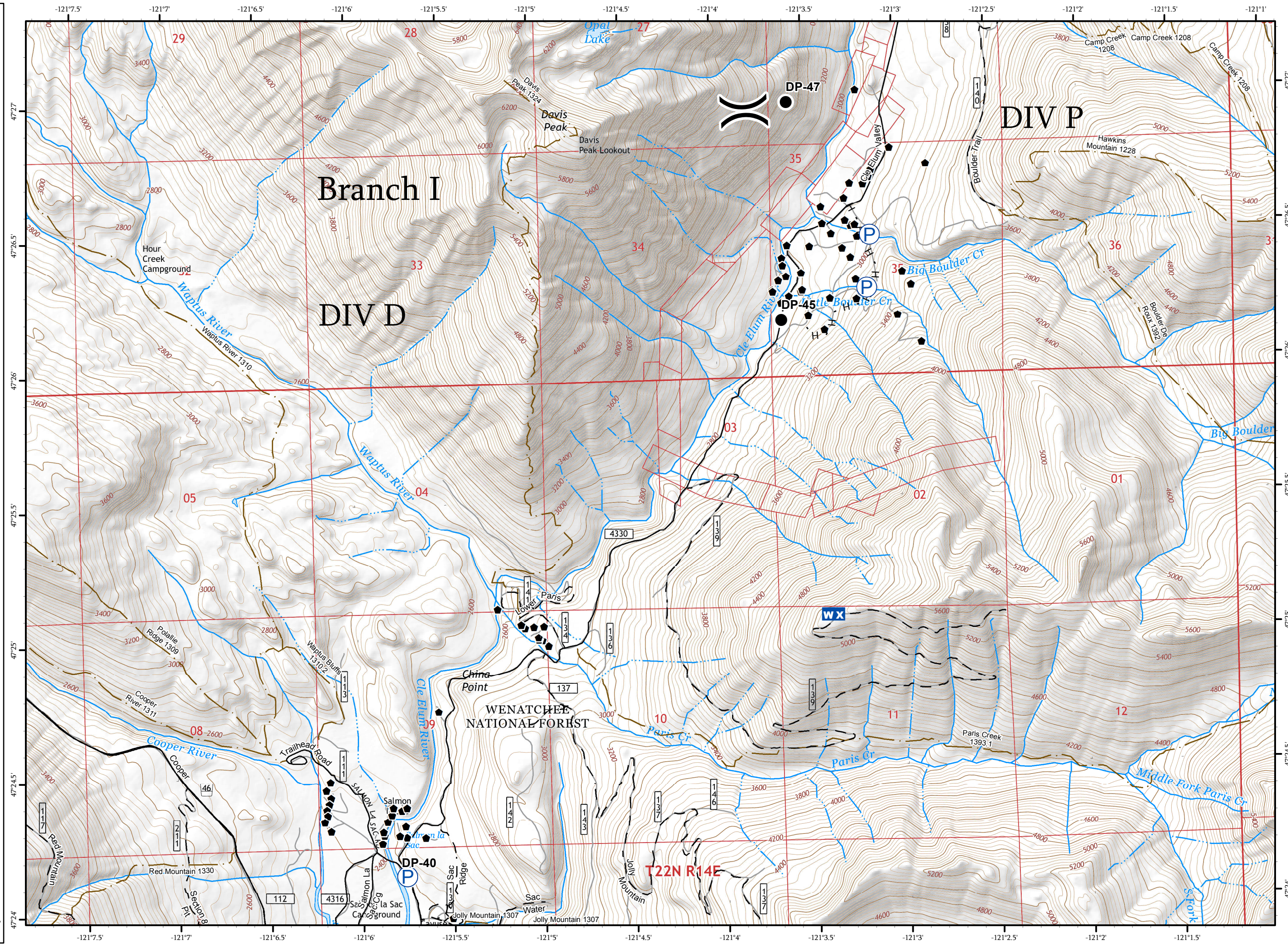
Jolly Mountain Fire  
WA-OWF-000361  
September 10, 2017  
27,412 Acres  
IR Flight  
9/9/2017 @ 0200 Hrs

- Drop Point
- WX Mobile Weather Unit
- P Pump
- H - Completed Hand Line
- ▣ Triaged Structure
- Roads
- - 4WD/Unimproved
- FS Trails







Miles

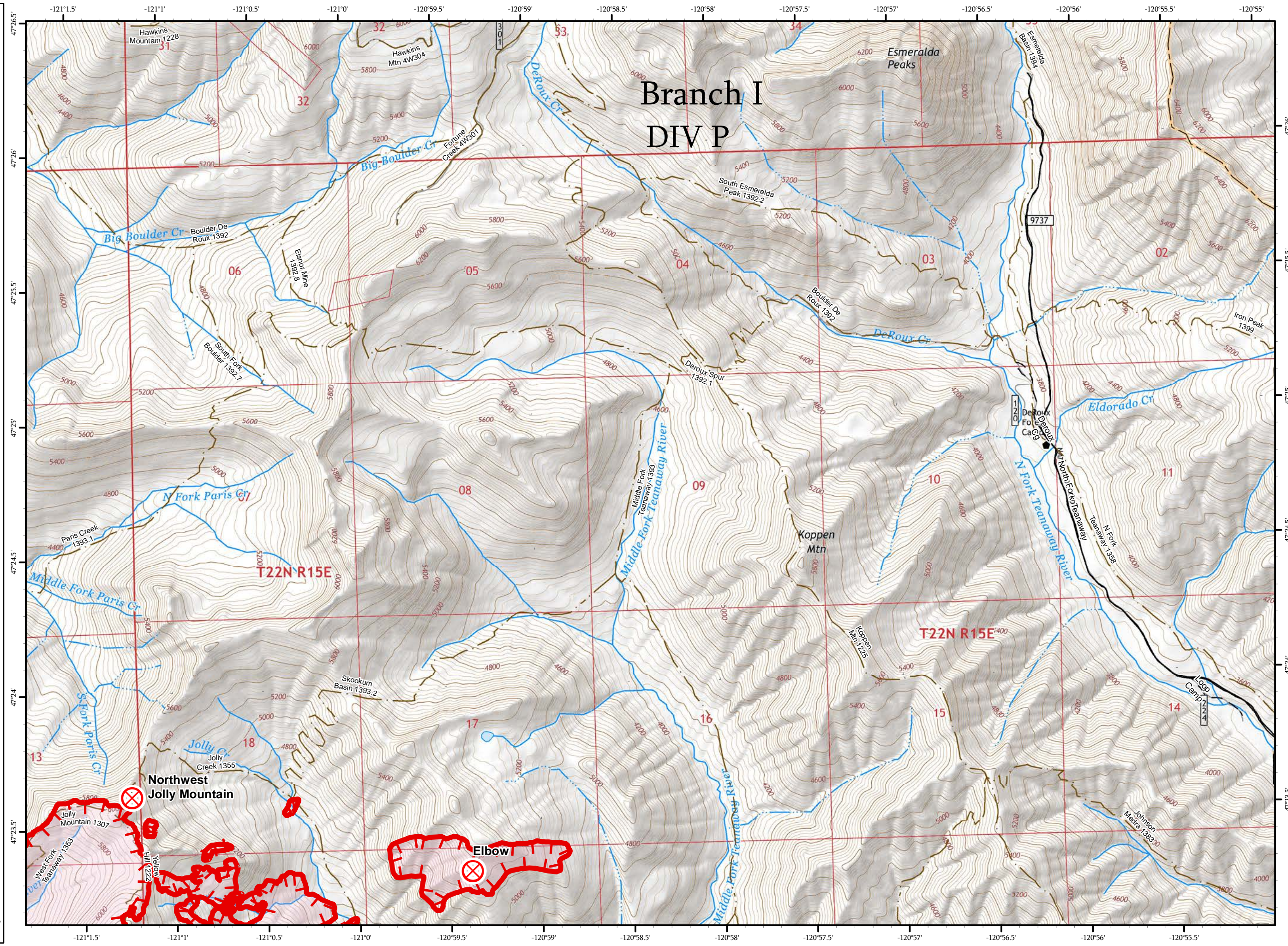
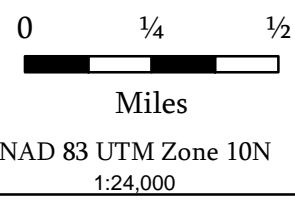
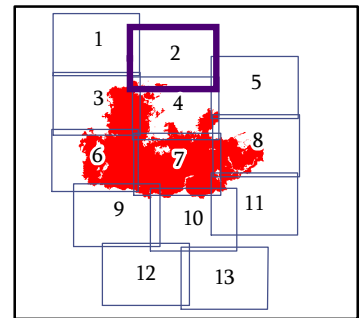
NAD 83 UTM Zone 10N  
1:24,000



IAP MAP  
PAGE 2 OF 13













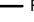

Jolly Mountain Fire  
WA-OWF-000361  
September 10, 2017  
27,412 Acres  
IR Flight  
9/9/2017 @ 0200 Hrs

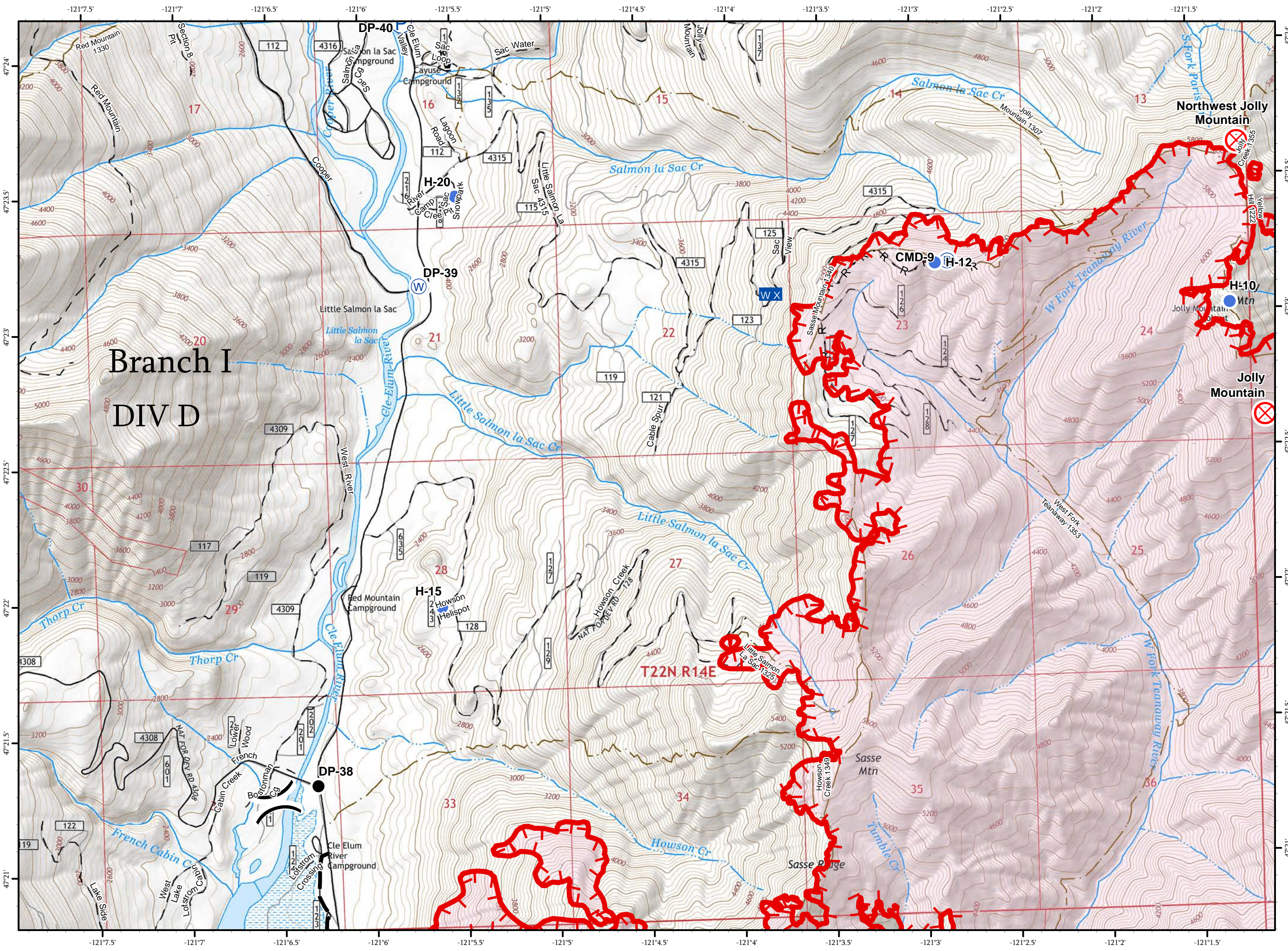
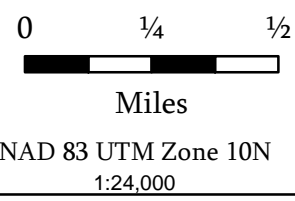
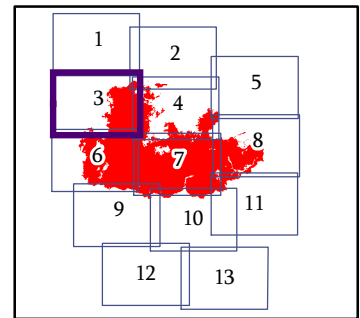
-  Fire Origin
-  Uncontrolled Fire Edge
-  Triaged Structure
-  Roads
-  4WD/Unimproved
-  FS Trails



IAP MAP  
PAGE 3 OF 13

Jolly Mountain Fire  
WA-OWF-000361  
September 10, 2017  
27,412 Acres  
IR Flight  
9/9/2017 @ 0200 Hrs

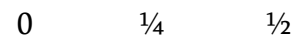
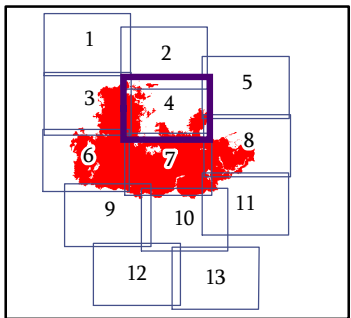
-  Drop Point
-  Fire Origin
-  Helispot
-  Mobile Weather Unit
-  Pump
-  Repeater
-  Water Source
-  Uncontrolled Fire Edge
-  Road as Completed Line
-  Planned Fire Line
-  Triaged Structure
-  Roads
-  4WD/Unimproved
-  FS Trails



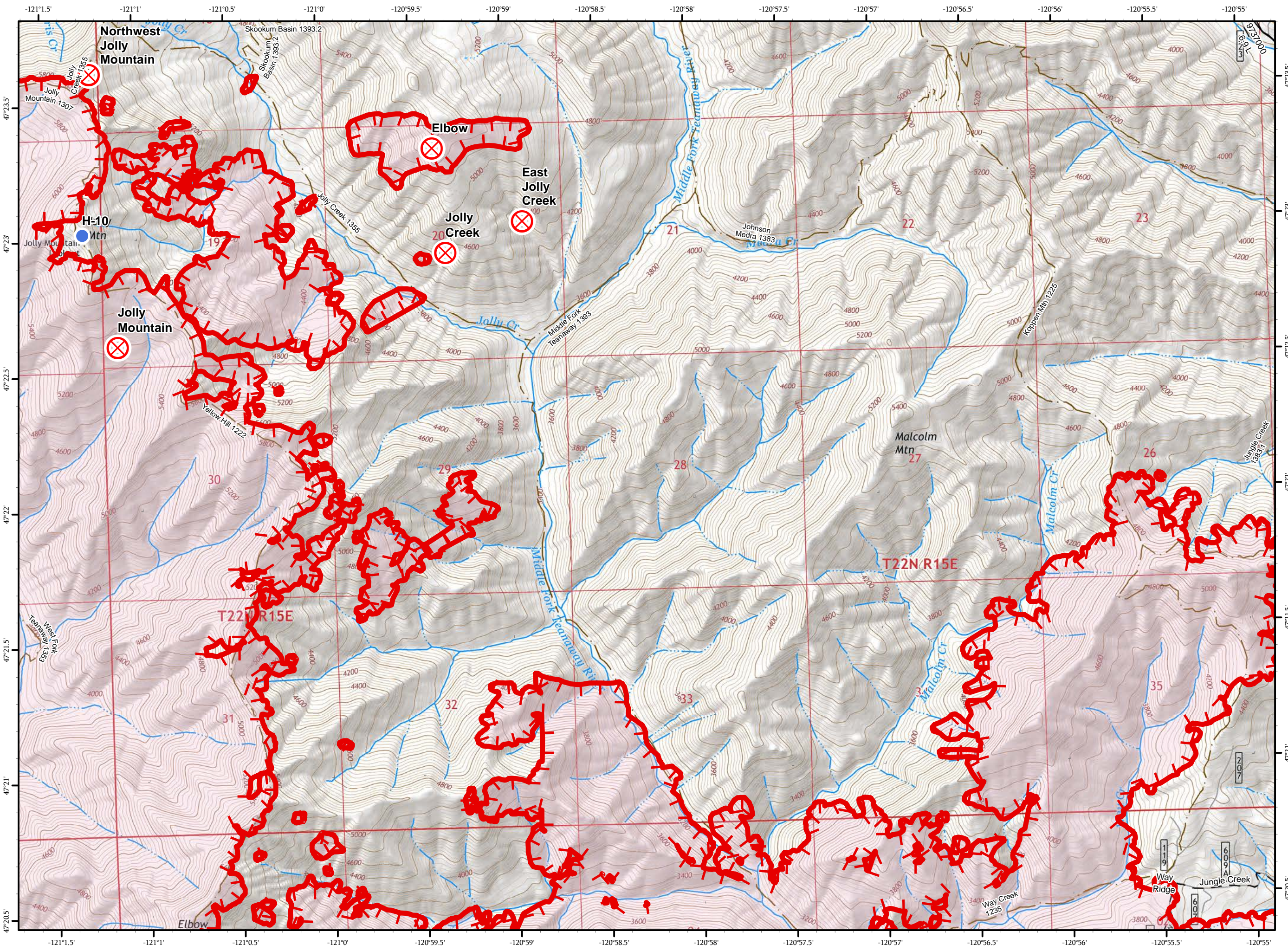
IAP MAP  
PAGE 4 OF 13

Jolly Mountain Fire  
WA-OWF-000361  
September 10, 2017  
27,412 Acres  
IR Flight  
9/9/2017 @ 0200 Hrs

-  Fire Origin
-  Helispot
-  Uncontrolled Fire Edge
-  Roads
-  4WD/Unimproved
-  FS Trails



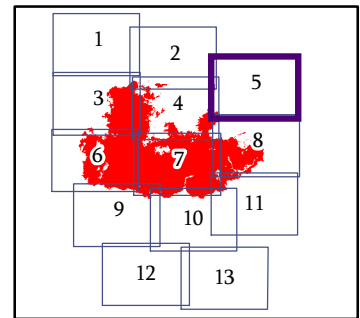
Miles  
NAD 83 UTM Zone 10N  
1:24,000



IAP MAP  
PAGE 5 OF 13

Jolly Mountain Fire  
WA-OWF-000361  
September 10, 2017  
27,412 Acres  
IR Flight  
9/9/2017 @ 0200 Hrs

- Pump
- Uncontrolled Fire Edge
- Road as Completed Line
- Triaged Structure
- Roads
- 4WD/Unimproved
- FS Trails

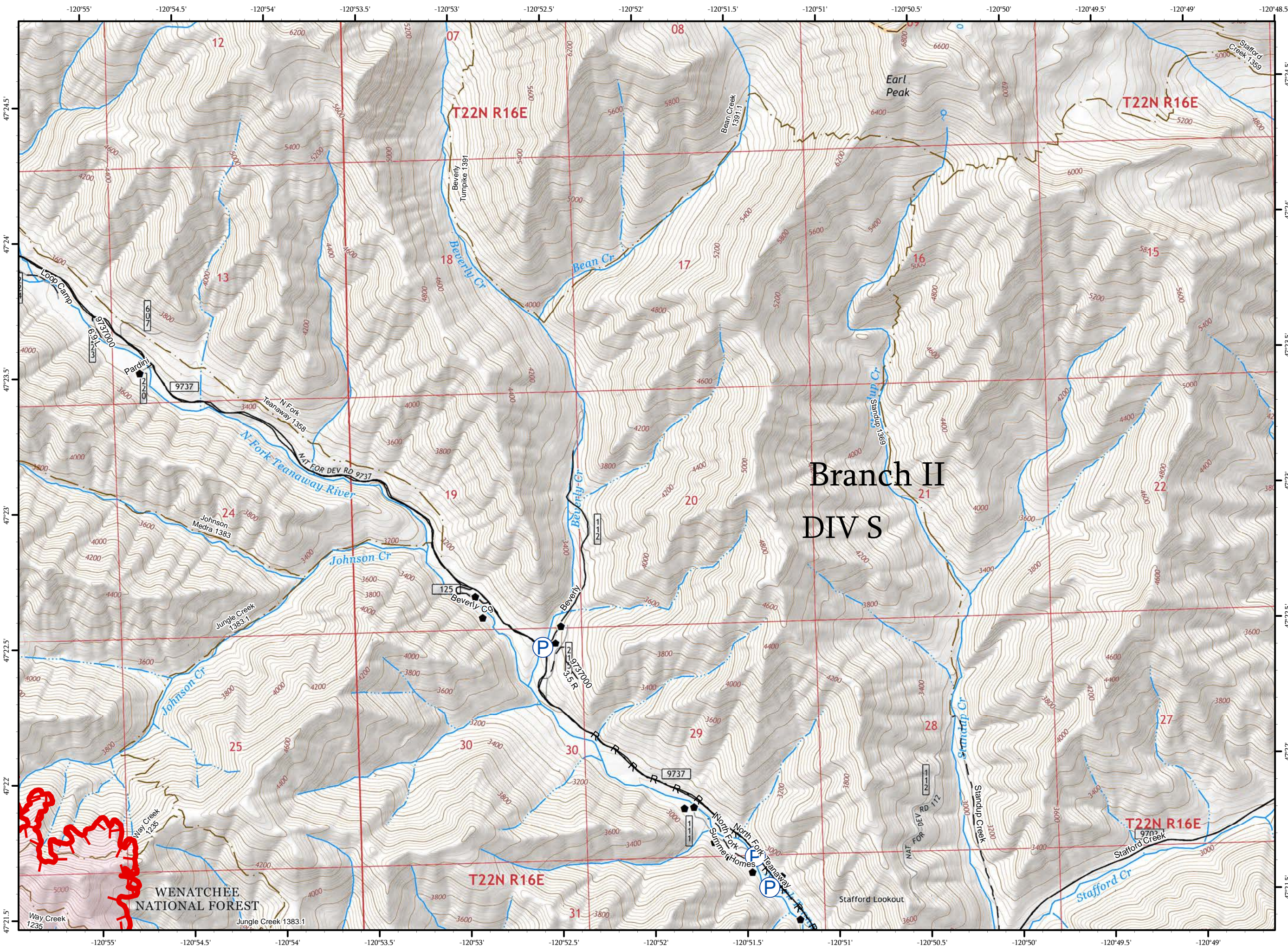


0 1/4 1/2

Miles





NAD 83 UTM Zone 10N

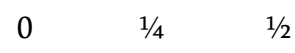
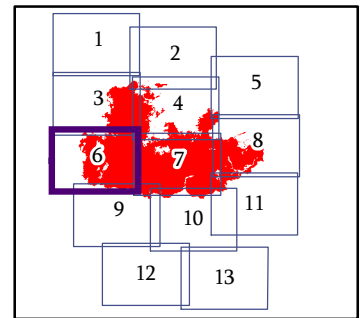
1:24,000



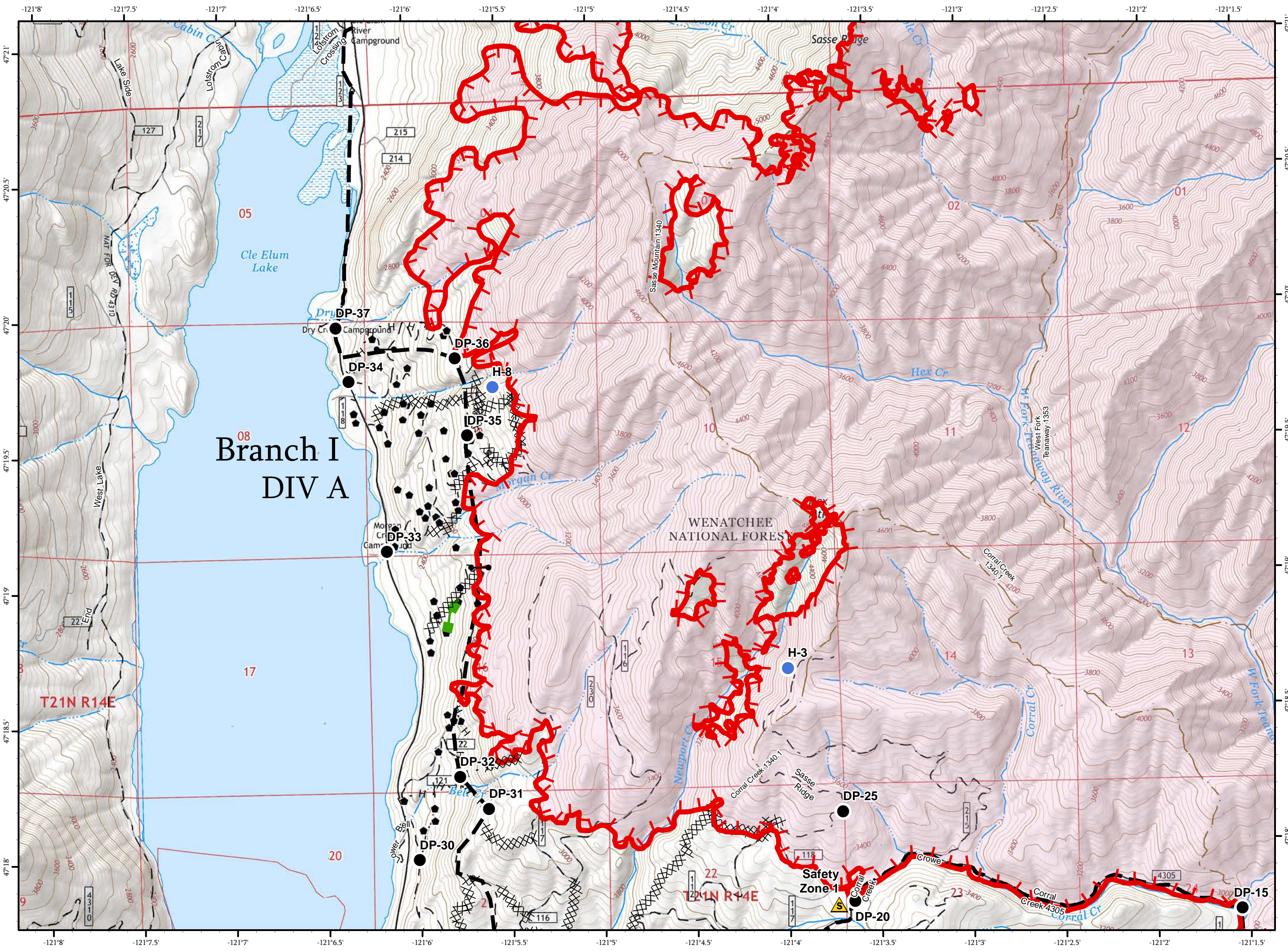
IAP MAP  
PAGE 6 OF 13

Jolly Mountain Fire  
WA-OWF-000361  
September 10, 2017  
27,412 Acres  
IR Flight  
9/9/2017 @ 0200 Hrs

-  Drop Point
-  Gate
-  Helispot
-  Safety Zone
-  Uncontrolled Fire Edge
-  Completed Dozer Line
-  Completed Hand Line
-  Planned Fire Line
-  Escape Route
-  Triaged Structure
-  Roads
-  4WD/Unimproved
-  FS Trails











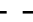




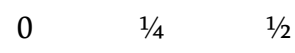
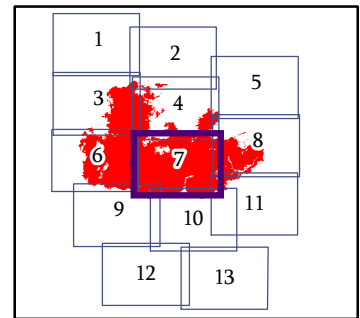
Miles  
NAD 83 UTM Zone 10N  
1:24,000



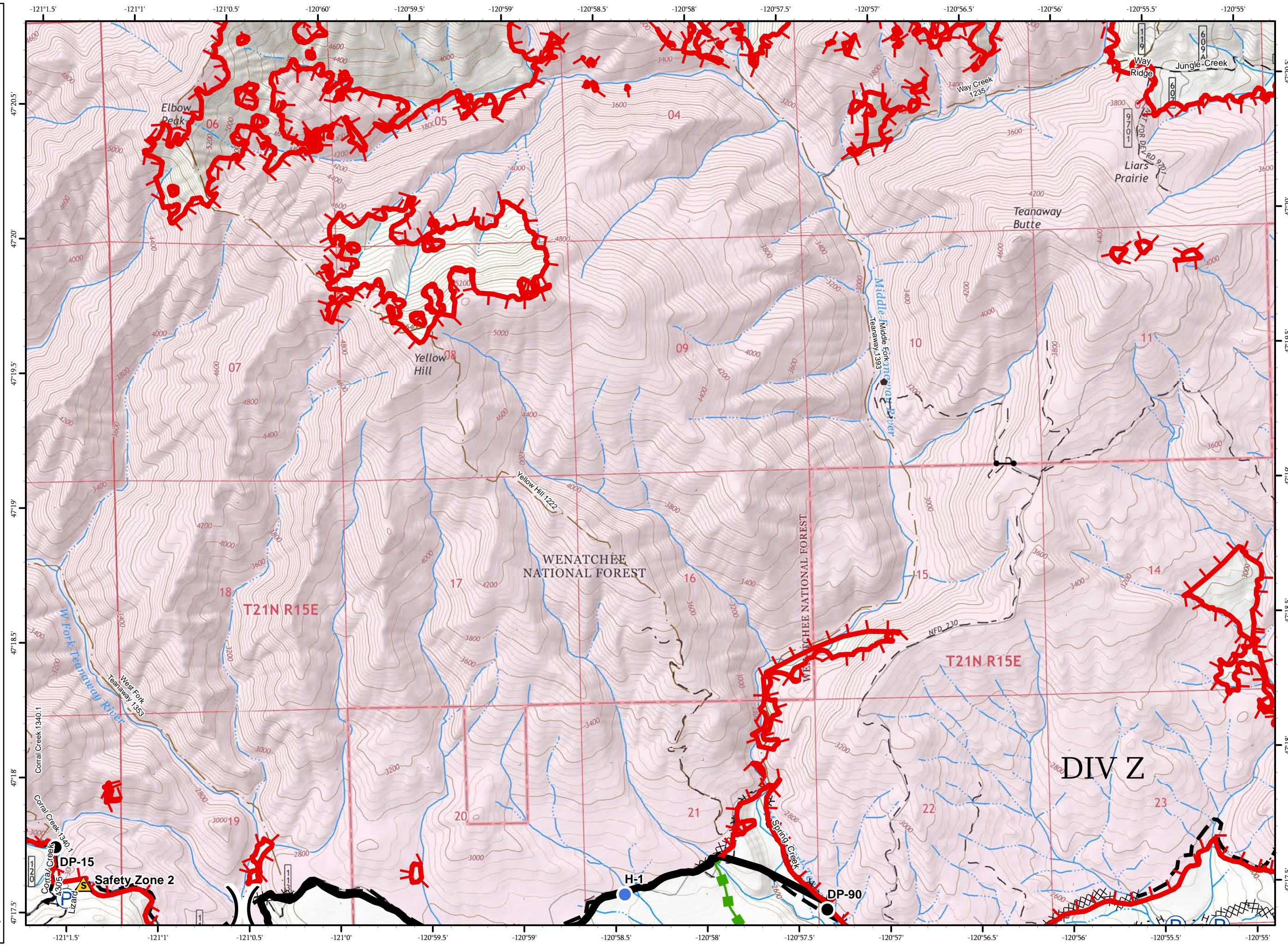
IAP MAP  
PAGE 7 OF 13

Jolly Mountain Fire  
WA-OWF-000361  
September 10, 2017  
27,412 Acres  
IR Flight  
9/9/2017 @ 0200 Hrs

-  Drop Point
-  Gate
-  Helispot
-  Pump
-  Safety Zone
-  Uncontrolled Fire Edge
-  Completed Line
-  Completed Dozer Line
-  H - Completed Hand Line
-  R - Road as Completed Line
-  Planned Fire Line
-  Escape Route
-  Triaged Structure
-  Roads
-  4WD/Unimproved
-  FS Trails
















Miles  
NAD 83 UTM Zone 10N  
1:24,000

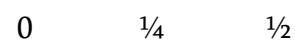
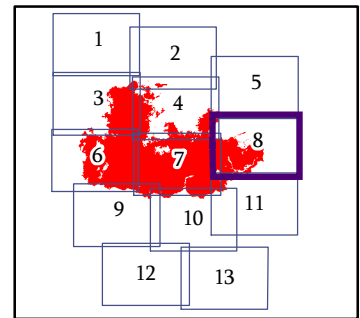




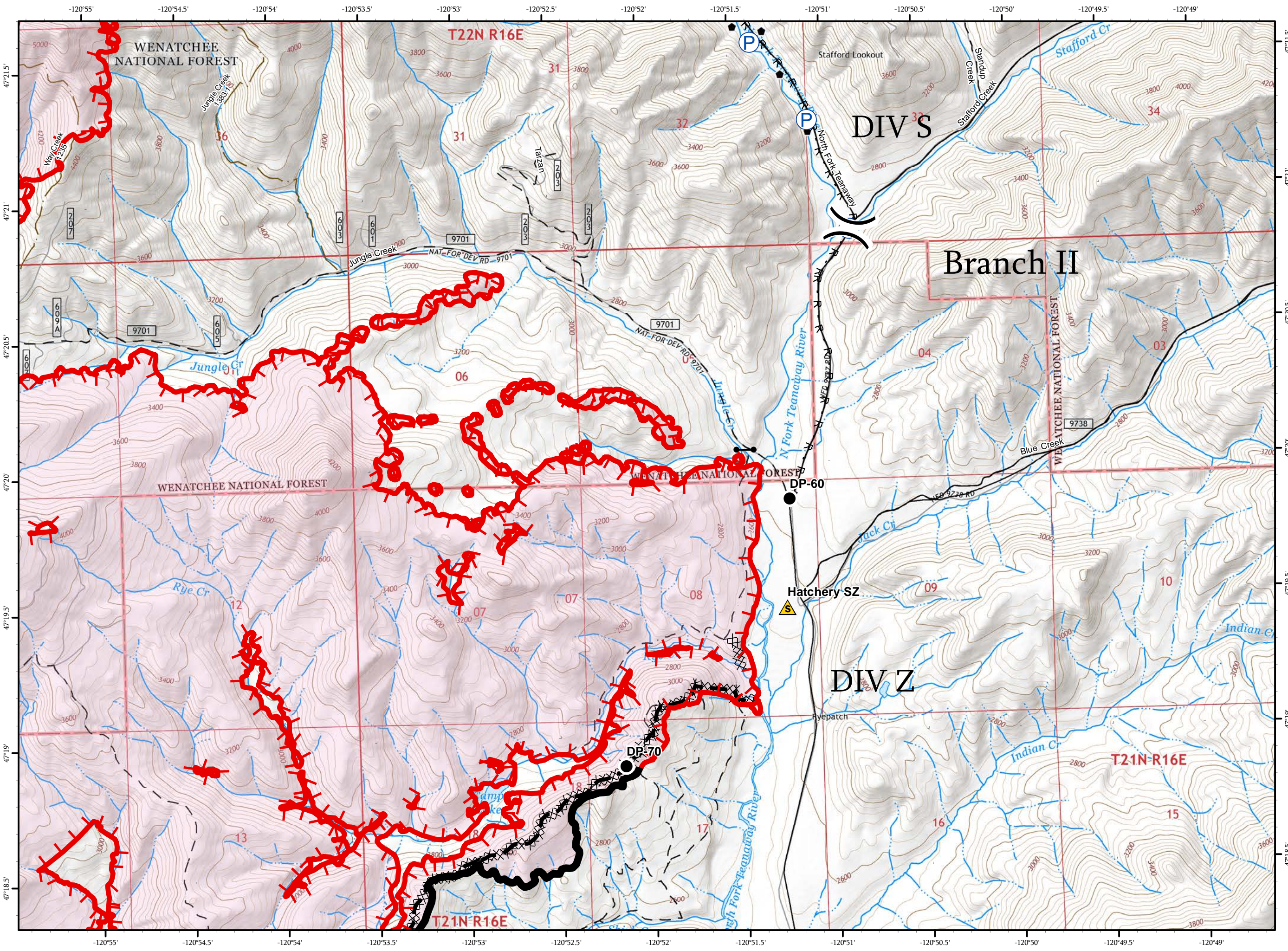
IAP MAP  
PAGE 8 OF 13

Jolly Mountain Fire  
WA-OWF-000361  
September 10, 2017  
27,412 Acres  
IR Flight  
9/9/2017 @ 0200 Hrs

-  Drop Point
-  Gate
-  Pump
-  Safety Zone
-  Uncontrolled Fire Edge
-  Completed Line
-  Completed Dozer Line
-  R - Road as Completed Line
-  Planned Fire Line
-  Triaged Structure
-  Roads
-  4WD/Unimproved
-  FS Trails





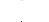












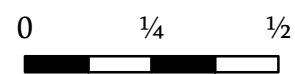
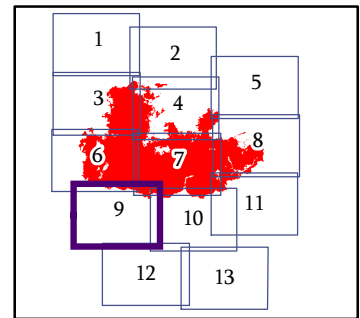
Miles  
NAD 83 UTM Zone 10N  
1:24,000



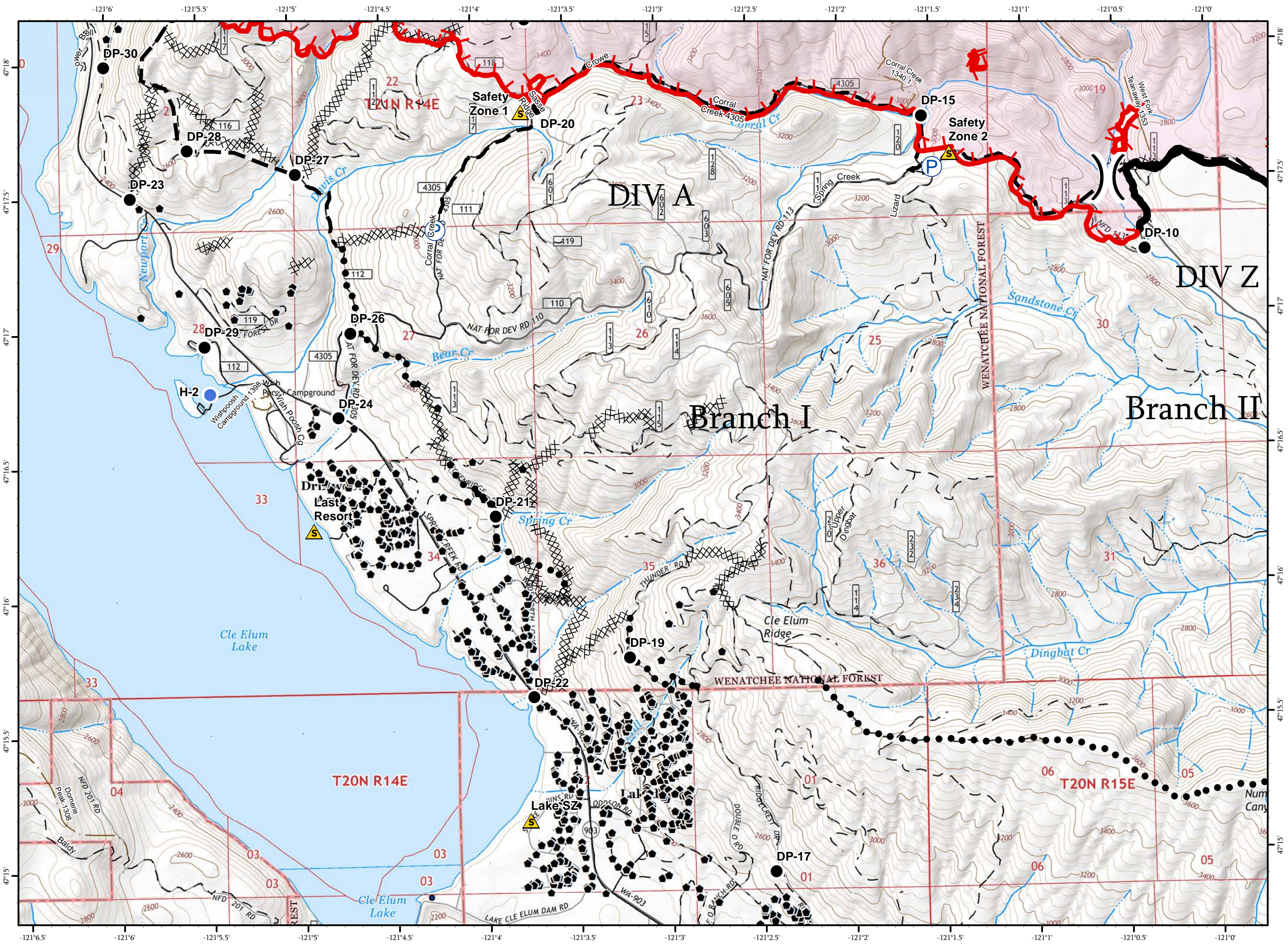
IAP MAP  
PAGE 9 OF 13

Jolly Mountain Fire  
WA-OWF-000361  
September 10, 2017  
27,412 Acres  
IR Flight  
9/9/2017 @ 0200 Hrs

-  Drop Point
-  Gate
-  Helispot
-  Pump
-  Safety Zone
-  Uncontrolled Fire Edge
-  Completed Line
-  Completed Dozer Line
-  Completed Hand Line
-  Planned Fire Line
-  Planned Secondary Line
-  Triaged Structure
-  Roads
-  4WD/Unimproved
-  FS Trails



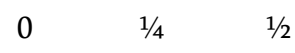
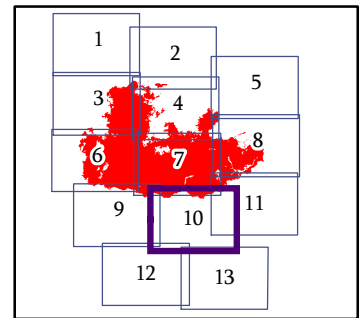
Miles  
NAD 83 UTM Zone 10N  
1:24,000



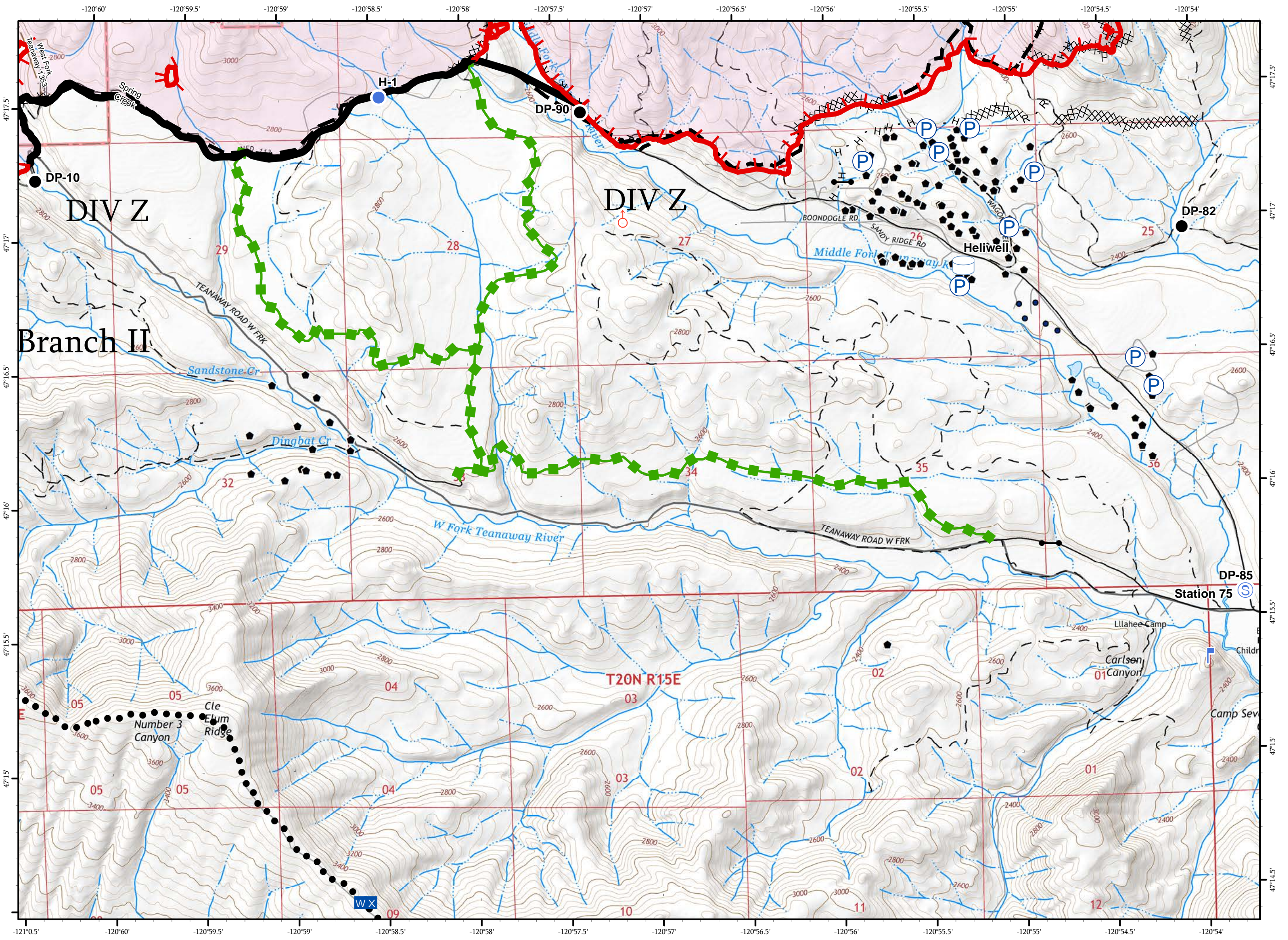
IAP MAP  
PAGE 10 OF 13

Jolly Mountain Fire  
WA-OWF-000361  
September 10, 2017  
27,412 Acres  
IR Flight  
9/9/2017 @ 0200 Hrs

- Drop Point
- Gate
- Helispot
- Lookout
- WX Mobile Weather Unit
- P Pump
- ♂ Spot Fire
- S Staging Area
- Water Tank
- Uncontrolled Fire Edge
- Completed Line
- Completed Dozer Line
- H - Completed Hand Line
- R - Road as Completed Line
- Planned Fire Line
- Planned Secondary Line
- Escape Route
- Triaged Structure
- Roads
- 4WD/Unimproved
- FS Trails















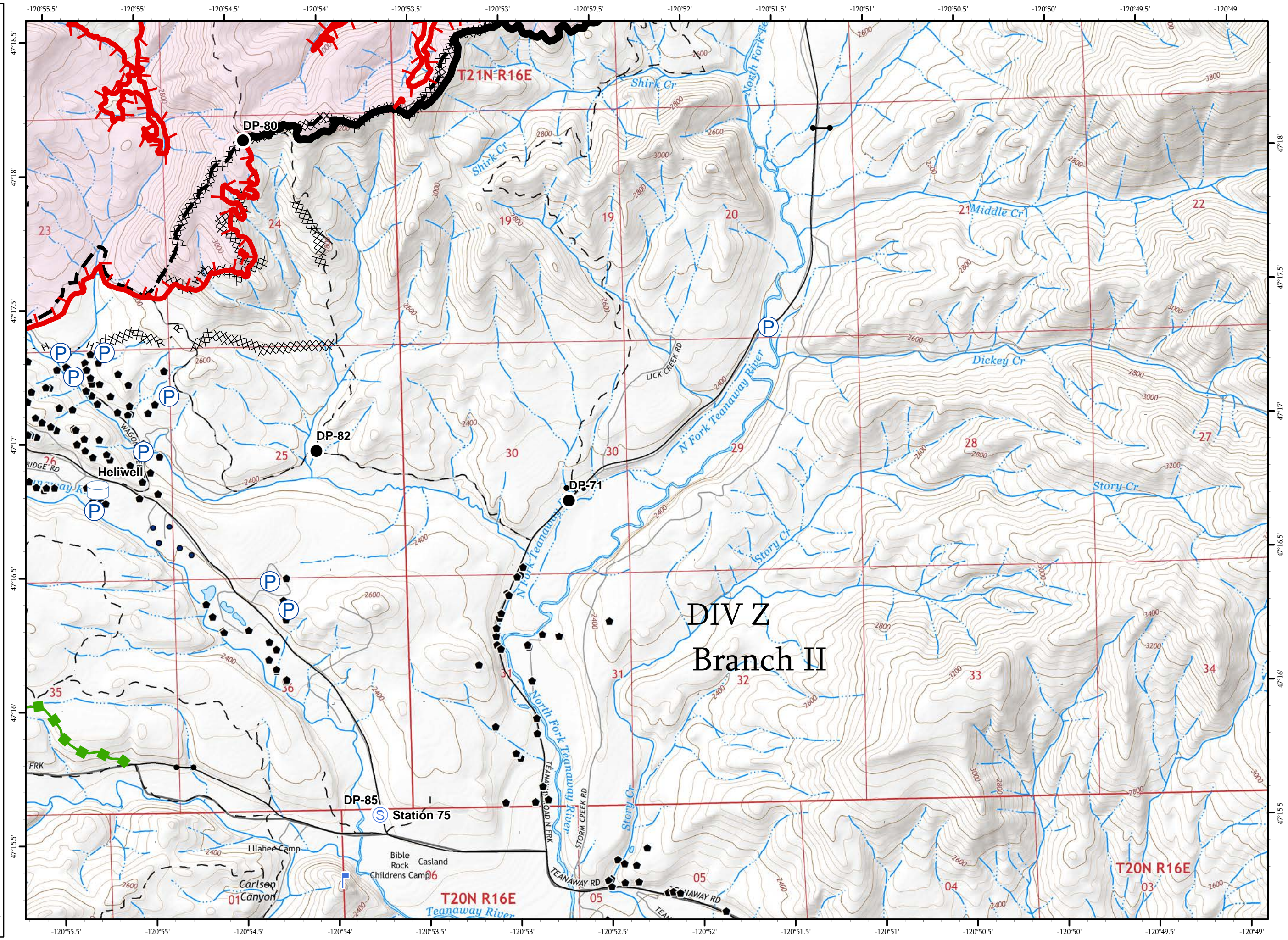
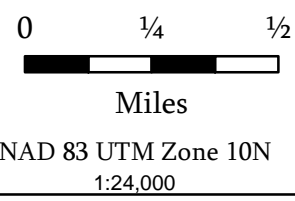
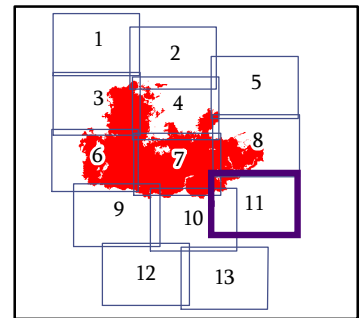
Miles  
NAD 83 UTM Zone 10N  
1:24,000



IAP MAP  
PAGE 11 OF 13

Jolly Mountain Fire  
WA-OWF-000361  
September 10, 2017  
27,412 Acres  
IR Flight  
9/9/2017 @ 0200 Hrs





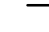



-  Drop Point
-  Gate
-  Lookout
-  Pump
-  Staging Area
-  Water Tank
-  Uncontrolled Fire Edge
-  Completed Line
-  Completed Dozer Line
-  Completed Hand Line
-  Road as Completed Line
-  Planned Fire Line
-  Escape Route
-  Triaged Structure
-  Roads
-  4WD/Unimproved

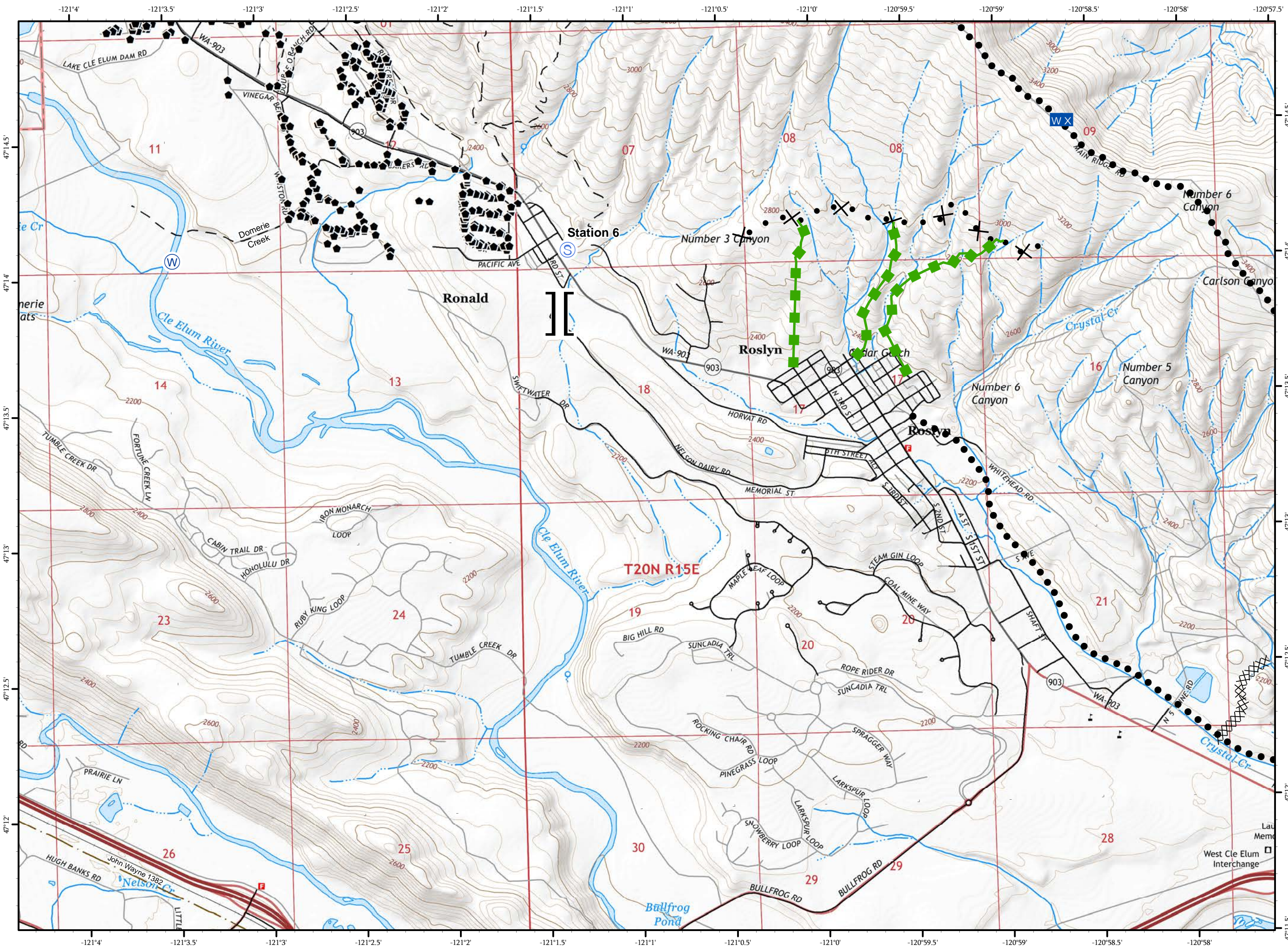
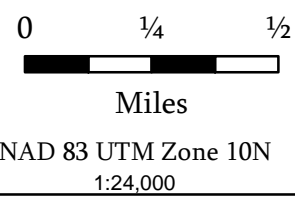
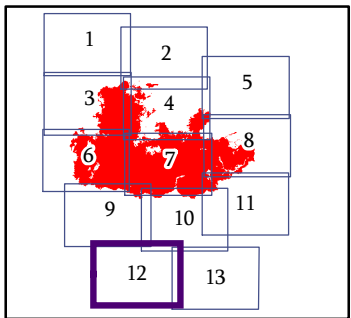


IAP MAP  
PAGE 12 OF 13

Jolly Mountain Fire  
WA-OWF-000361  
September 10, 2017  
27,412 Acres  
IR Flight  
9/9/2017 @ 0200 Hrs

-  Drop Point
-  Mobile Weather Unit
-  Staging Area
-  Water Source
-  Branch Break

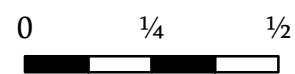
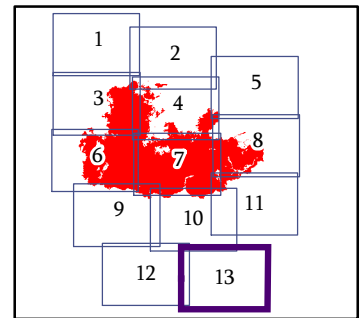
-  Completed Dozer Line
-  Proposed Dozer Line
-  Planned Secondary Line
-  Escape Route
-  Triaged Structure
-  Roads
-  4WD/Unimproved
-  FS Trails



IAP MAP  
PAGE 13 OF 13

Jolly Mountain Fire  
WA-OWF-000361  
September 10, 2017  
27,412 Acres  
IR Flight  
9/9/2017 @ 0200 Hrs

- Drop Point
- Gate
- ⊕ Helibase
- XXXX Completed Dozer Line
- Planned Secondary Line
- Roads



Miles  
NAD 83 UTM Zone 10N  
1:24,000

