

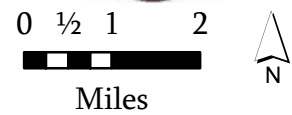


IAP MAP INDEX

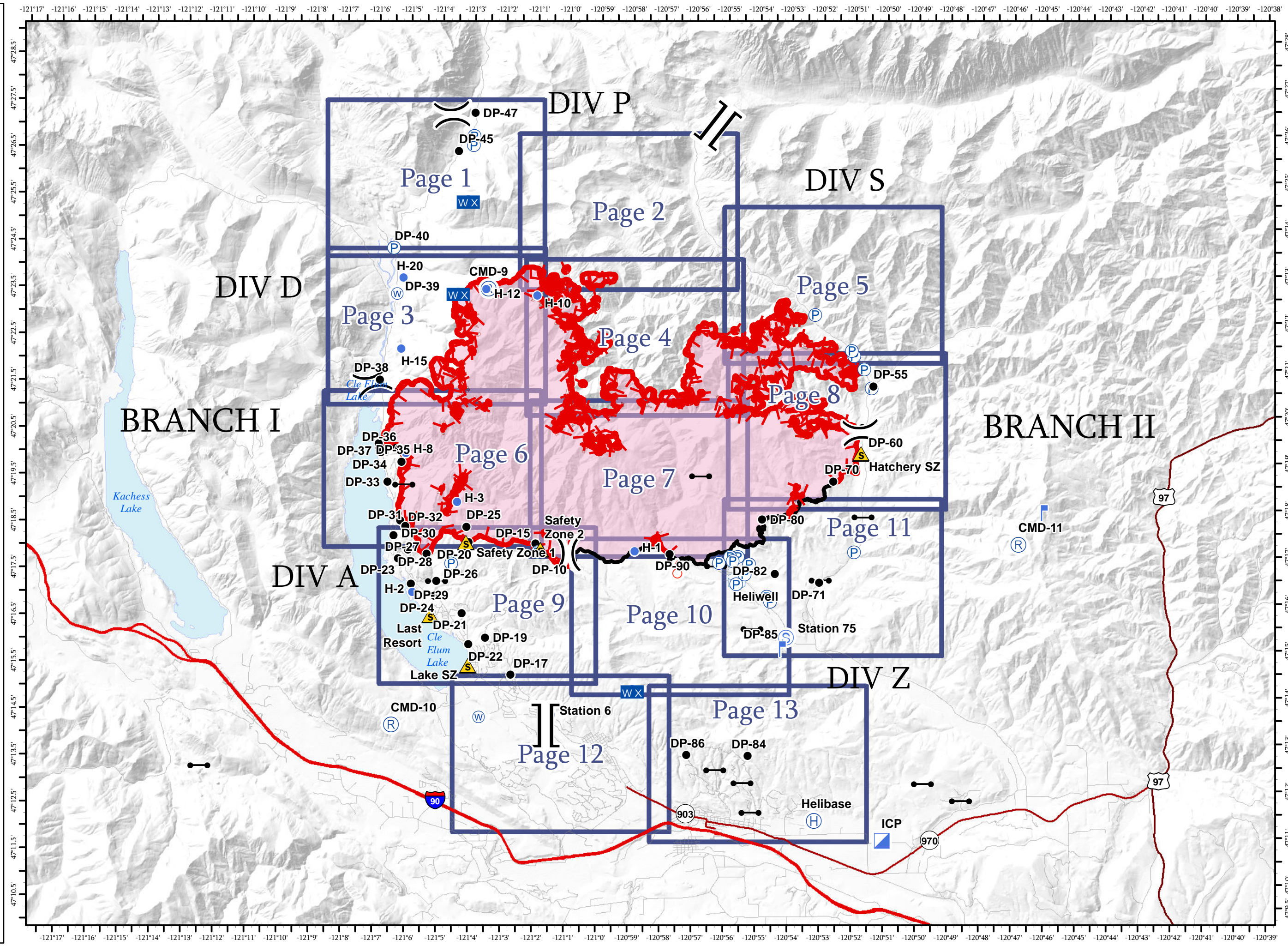
Jolly Mountain Fire
WA-OWF-000361
September 12, 2017

30,720 Acres
Perimeter Flight
9/11/2017 @ 0130 Hrs

- Drop Point
- Gate
- Helibase
- Helispot
- Incident Command Post
- Lookout
- Mobile Weather Unit
- Pump
- Repeater
- Safety Zone
- Spot Fire
- Staging Area
- Water Source
- Water Tank
- Division Break
- Branch Break
- Uncontrolled Fire Edge
- Completed Line



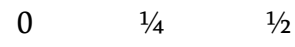
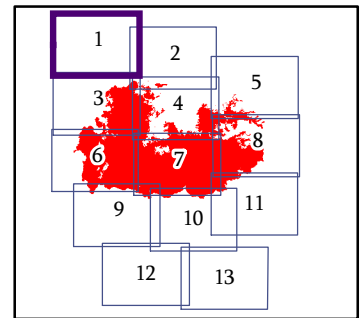
NAD 83 UTM Zone 10N



IAP MAP
PAGE 1 OF 13

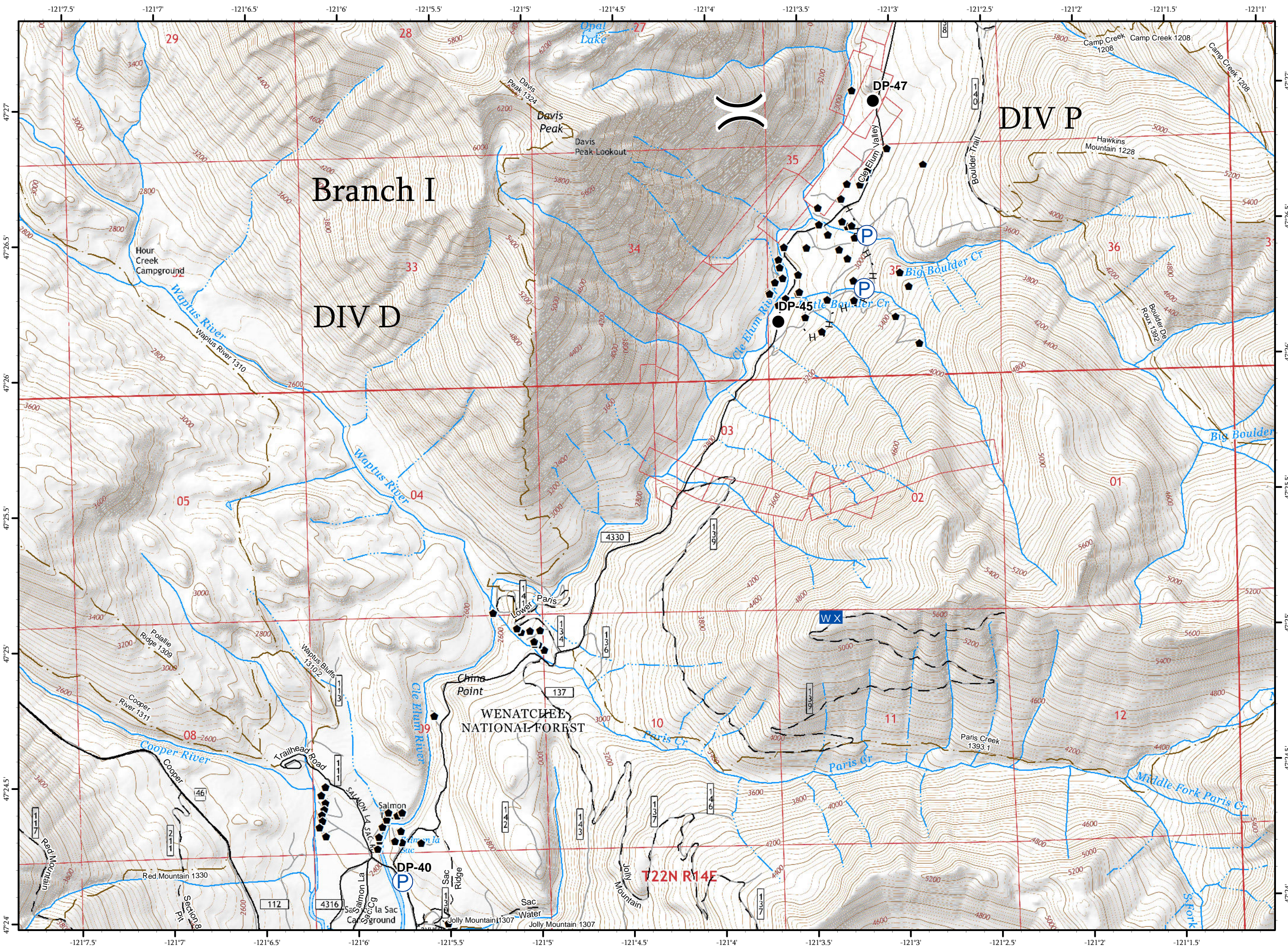
Jolly Mountain Fire
WA-OWF-000361
September 12, 2017
30,720 Acres
IR Flight
9/11/2017 @ 0130 Hrs

- Drop Point
- WX Mobile Weather Unit
- P Pump
- H - Completed Hand Line
- Triaged Structure
- Roads
- - 4WD/Unimproved
- FS Trails







Miles

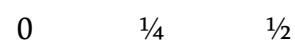
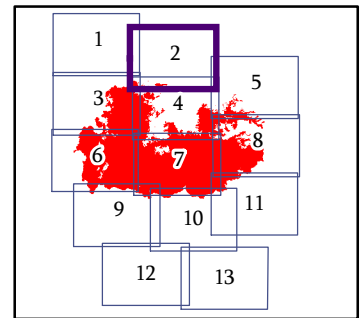
NAD 83 UTM Zone 10N
1:24,000



IAP MAP
PAGE 2 OF 13

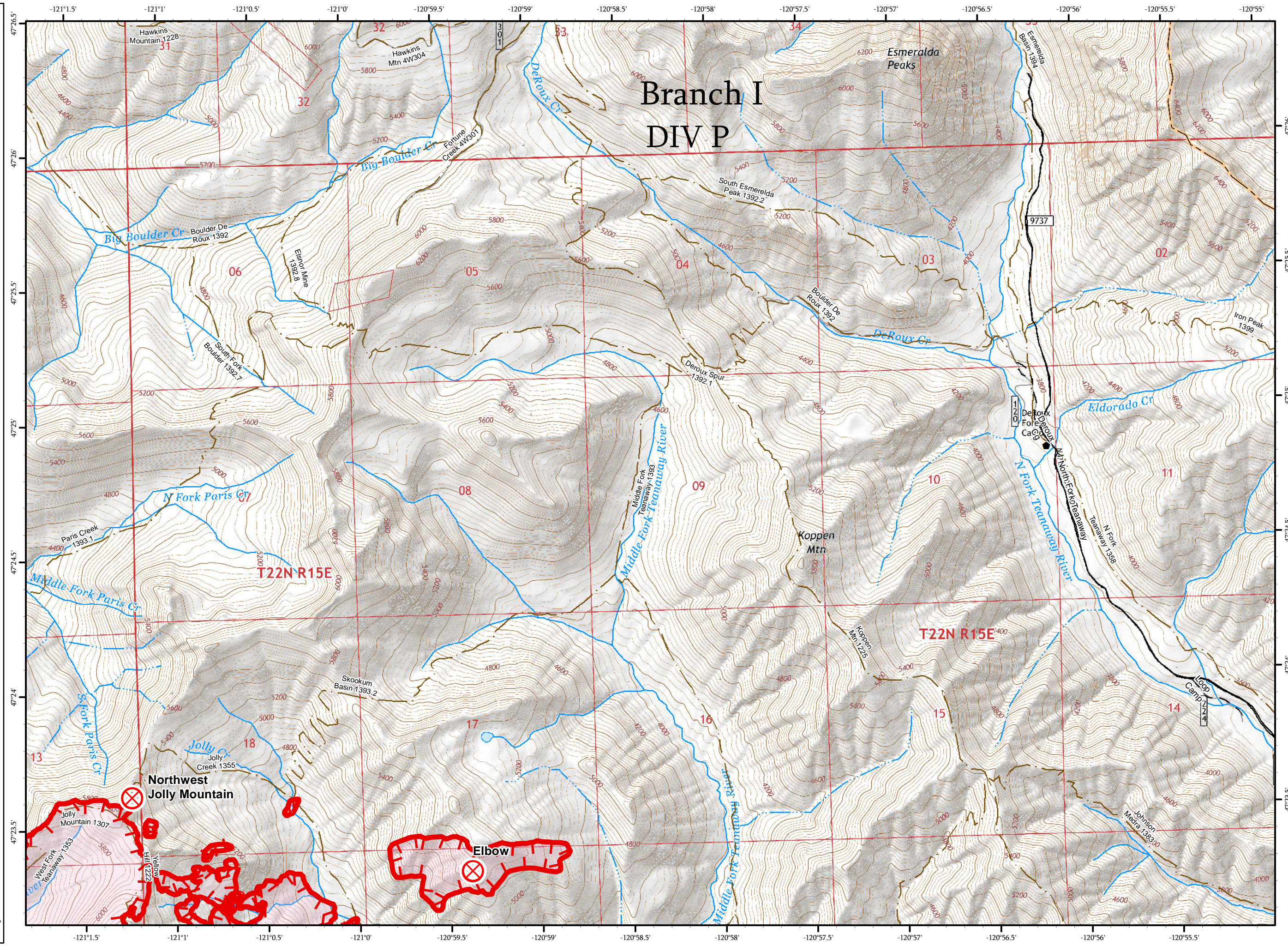
Jolly Mountain Fire
WA-OWF-000361
September 12, 2017
30,720 Acres
IR Flight
9/11/2017 @ 0130 Hrs

-  Fire Origin
-  Uncontrolled Fire Edge
-  Triaged Structure
-  Roads
-  4WD/Unimproved
-  FS Trails



Miles

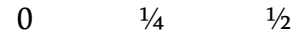
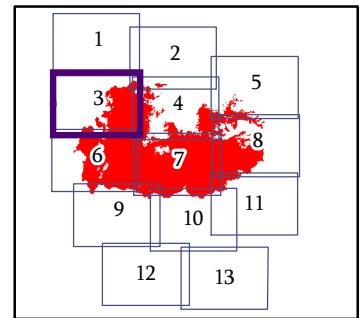
NAD 83 UTM Zone 10N
1:24,000



IAP MAP
PAGE 3 OF 13

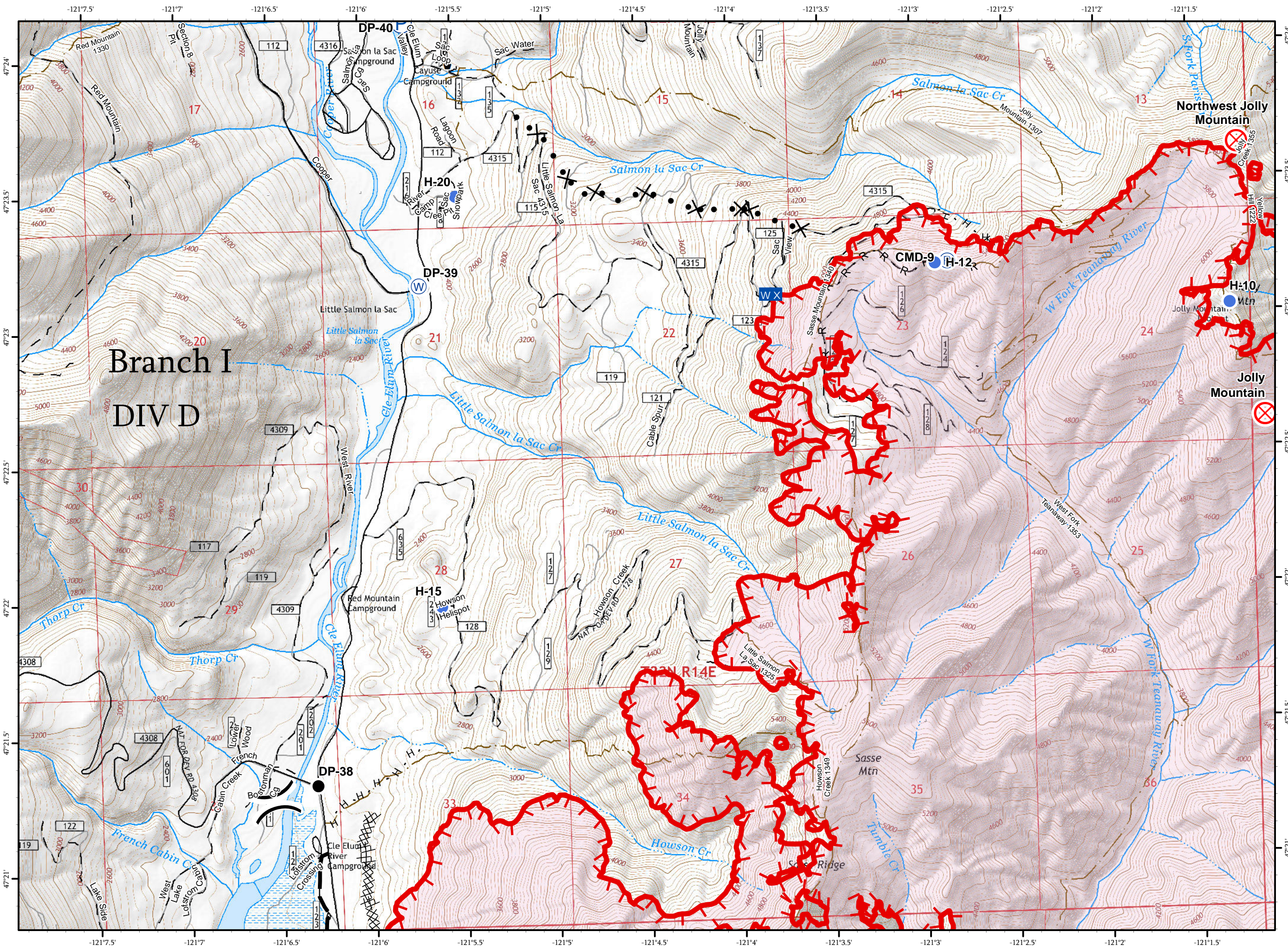
Jolly Mountain Fire
WA-OWF-000361
September 12, 2017
30,720 Acres
IR Flight
9/11/2017 @ 0130 Hrs

- Drop Point
- ⊗ Fire Origin
- Helispot
- W X Mobile Weather Unit
- P Pump
- R Repeater
- W Water Source
- Uncontrolled Fire Edge
- Completed Dozer Line
- H - Completed Hand Line
- R - Road as Completed Line
- Proposed Dozer Line
- Planned Fire Line
- Triaged Structure
- Roads
- 4WD/Unimproved
- FS Trails



Miles

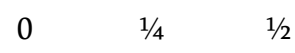
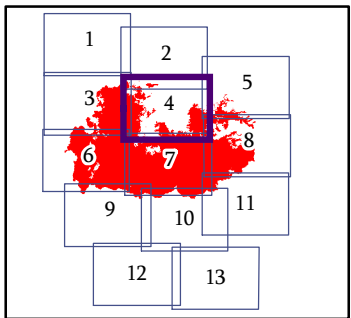
NAD 83 UTM Zone 10N
1:24,000



IAP MAP PAGE 4 OF 13

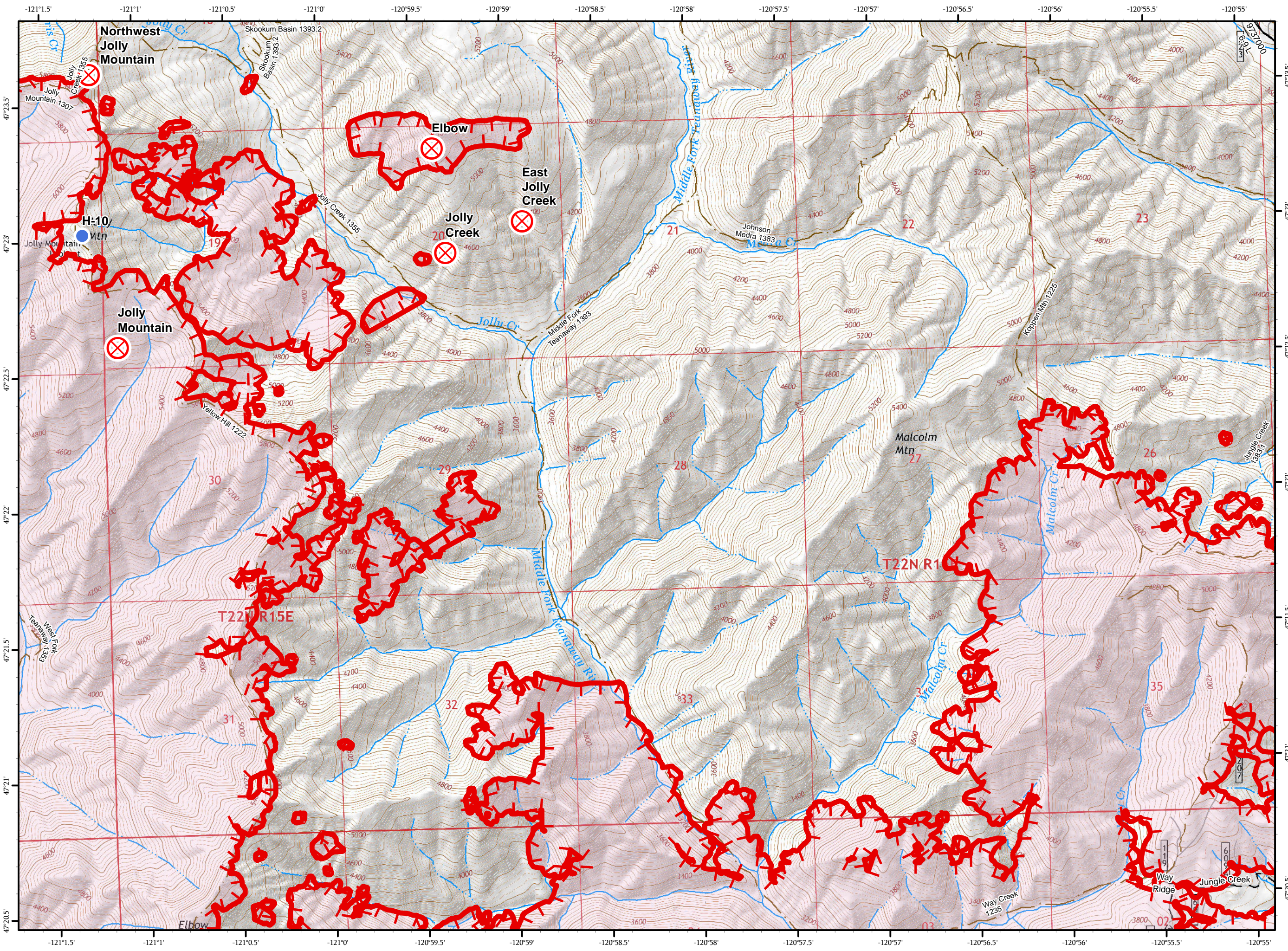
Jolly Mountain Fire
WA-OWF-000361
September 12, 2017
30,720 Acres
IR Flight
9/11/2017 @ 0130 Hrs

-  Fire Origin
-  Helispot
-  Uncontrolled Fire Edge
-  Roads
-  4WD/Unimproved
-  FS Trails



Miles

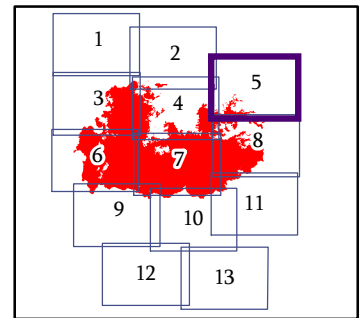
NAD 83 UTM Zone 10N
1:24,000



IAP MAP
PAGE 5 OF 13

Jolly Mountain Fire
WA-OWF-000361
September 12, 2017
30,720 Acres
IR Flight
9/11/2017 @ 0130 Hrs

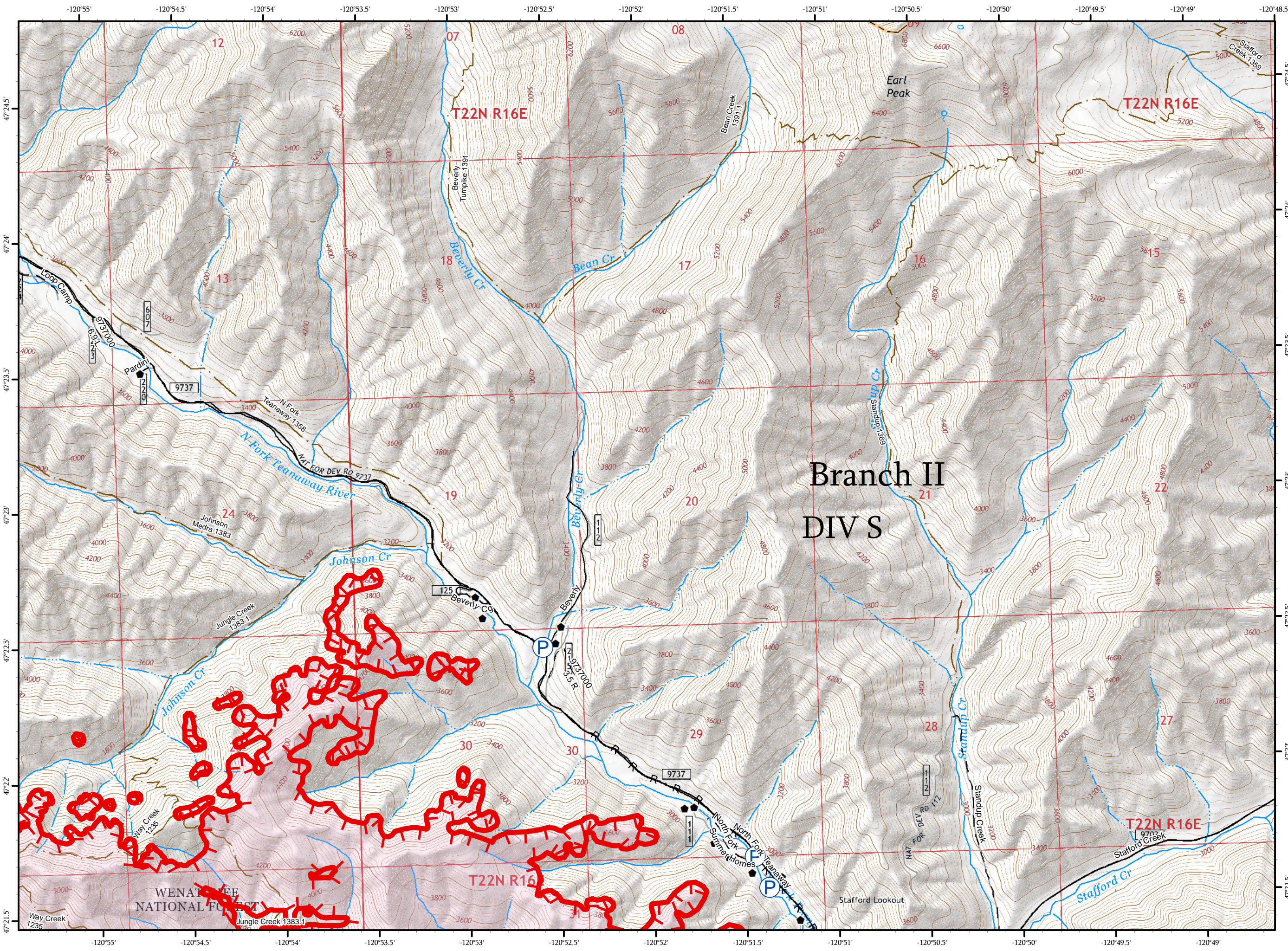
- Pump
- Uncontrolled Fire Edge
- Road as Completed Line
- Triaged Structure
- Roads
- 4WD/Unimproved
- FS Trails



0 1/4 1/2




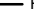

Miles

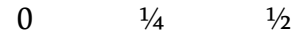
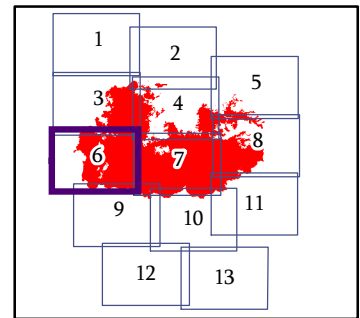
NAD 83 UTM Zone 10N
1:24,000



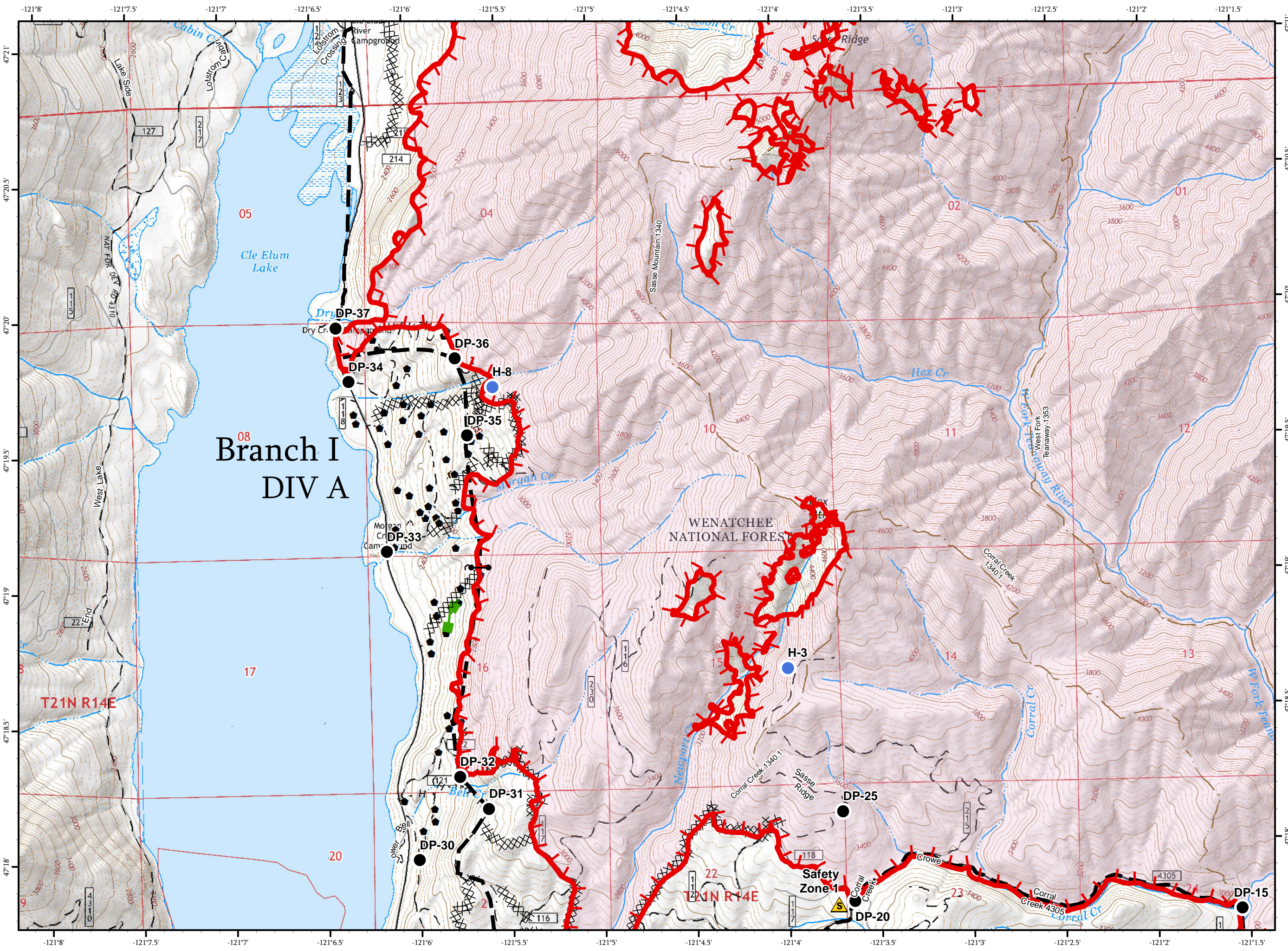
IAP MAP
PAGE 6 OF 13

Jolly Mountain Fire
WA-OWF-000361
September 12, 2017
30,720 Acres
IR Flight
9/11/2017 @ 0130 Hrs

-  Drop Point
-  Gate
-  Helispot
-  Safety Zone
-  Uncontrolled Fire Edge
-  Completed Dozer Line
-  Completed Hand Line
-  Planned Fire Line
-  Escape Route
-  Triaged Structure
-  Roads
-  4WD/Unimproved
-  FS Trails



















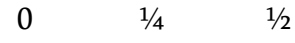
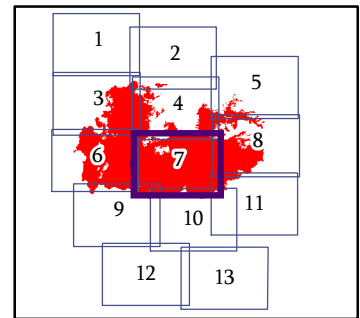
Miles
NAD 83 UTM Zone 10N
1:24,000



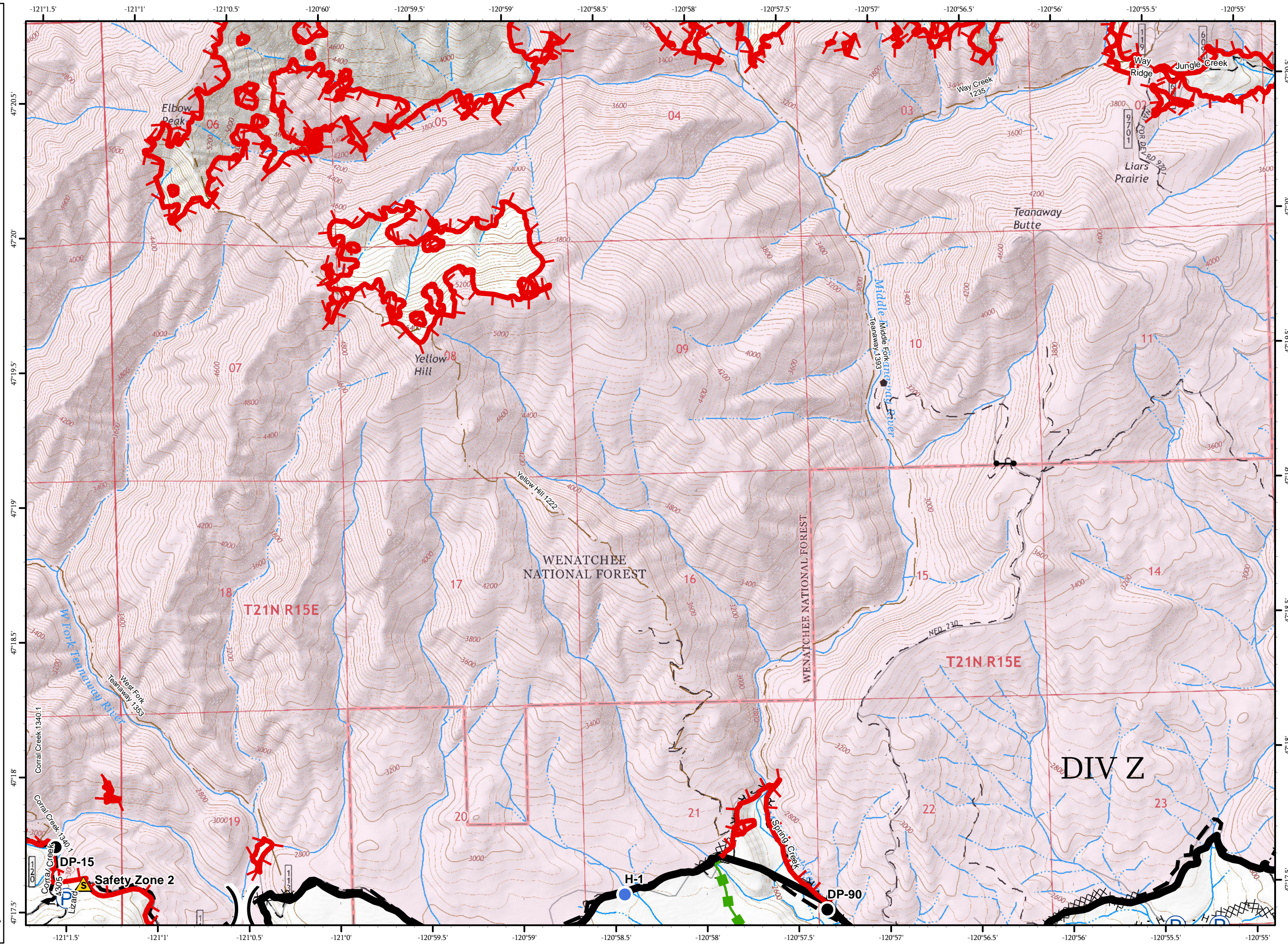
IAP MAP
PAGE 7 OF 13

Jolly Mountain Fire
WA-OWF-000361
September 12, 2017
30,720 Acres
IR Flight
9/11/2017 @ 0130 Hrs

-  Drop Point
-  Gate
-  Helispot
-  Pump
-  Safety Zone
-  Uncontrolled Fire Edge
-  Completed Line
-  Completed Dozer Line
-  Completed Hand Line
-  Road as Completed Line
-  Planned Fire Line
-  Escape Route
-  Triaged Structure
-  Roads
-  4WD/Unimproved
-  FS Trails
















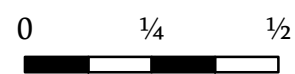
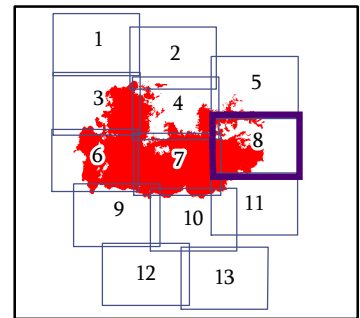
Miles
NAD 83 UTM Zone 10N
1:24,000



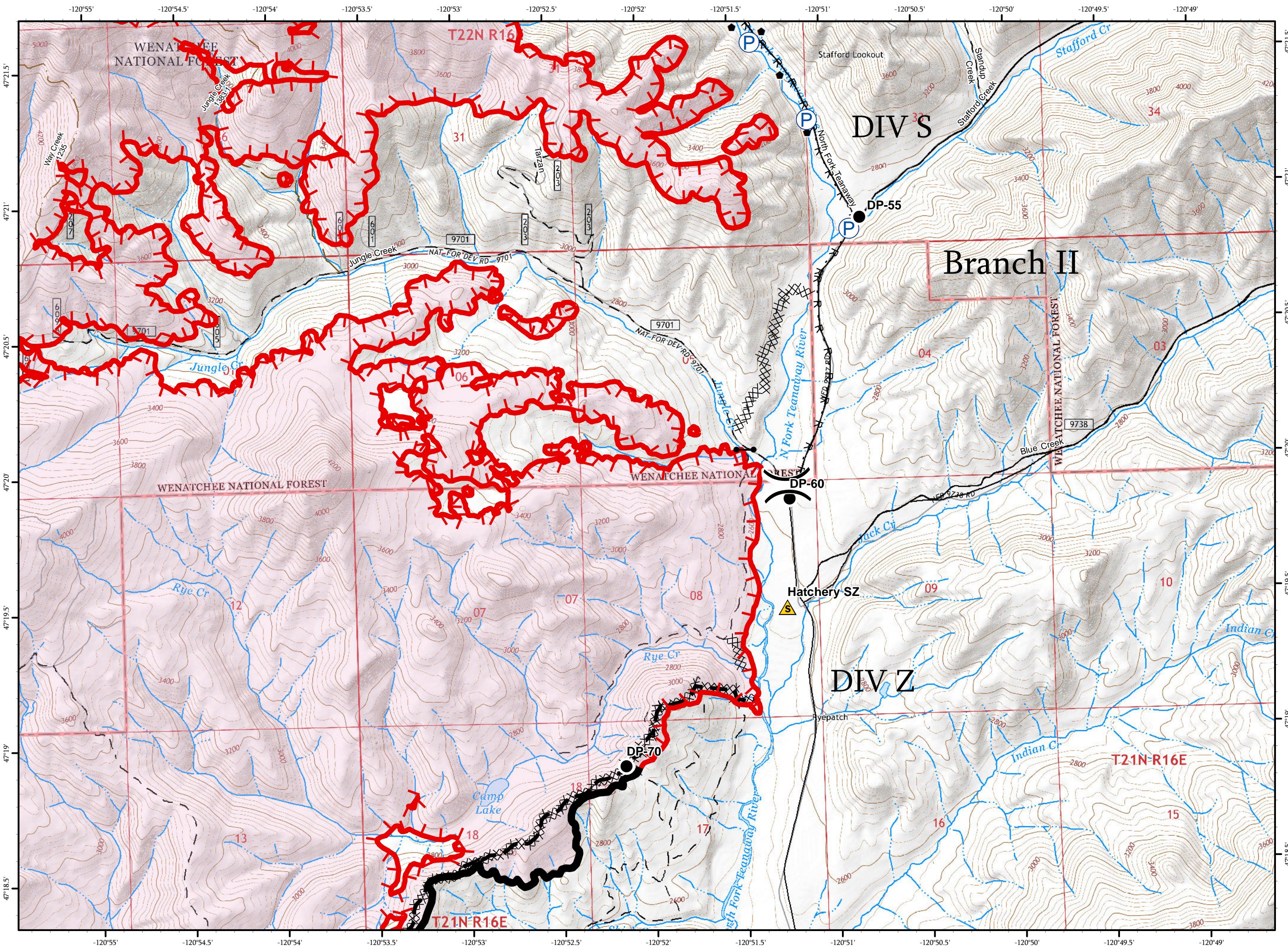
IAP MAP
PAGE 8 OF 13

Jolly Mountain Fire
WA-OWF-000361
September 12, 2017
30,720 Acres
IR Flight
9/11/2017 @ 0130 Hrs

-  Drop Point
-  Gate
-  Pump
-  Safety Zone
-  Uncontrolled Fire Edge
-  Completed Line
-  Completed Dozer Line
-  R - Road as Completed Line
-  Planned Fire Line
-  Triaged Structure
-  Roads
-  4WD/Unimproved
-  FS Trails


















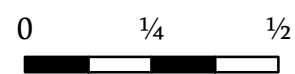
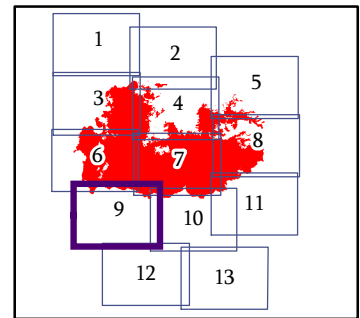
Miles
NAD 83 UTM Zone 10N
1:24,000



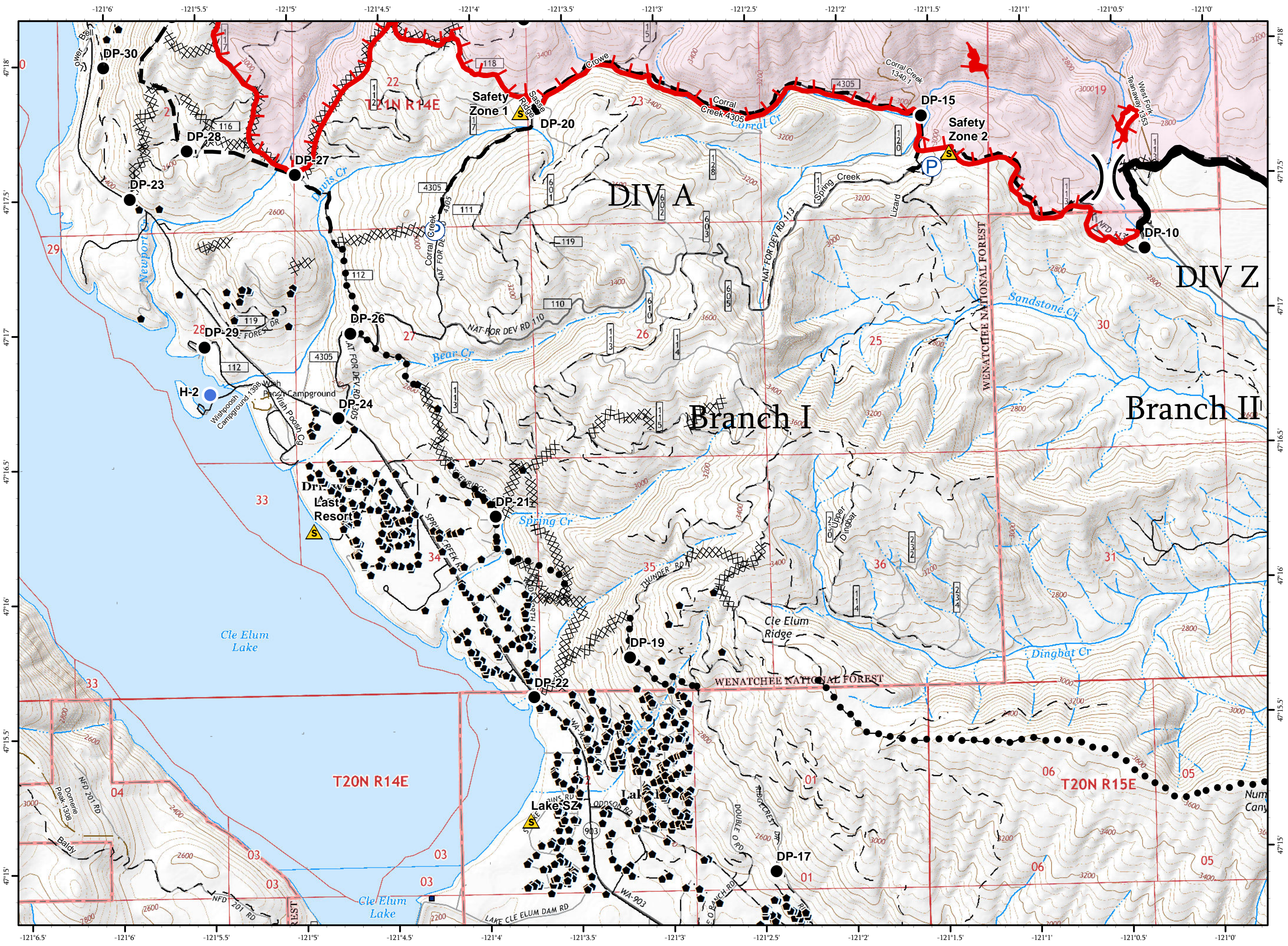
IAP MAP
PAGE 9 OF 13

Jolly Mountain Fire
WA-OWF-000361
September 12, 2017
30,720 Acres
IR Flight
9/11/2017 @ 0130 Hrs

-  Drop Point
-  Gate
-  Helispot
-  Pump
-  Safety Zone
-  Uncontrolled Fire Edge
-  Completed Line
-  Completed Dozer Line
-  Completed Hand Line
-  Planned Fire Line
-  Planned Secondary Line
-  Triaged Structure
-  Roads
-  4WD/Unimproved
-  FS Trails



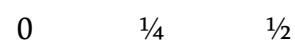
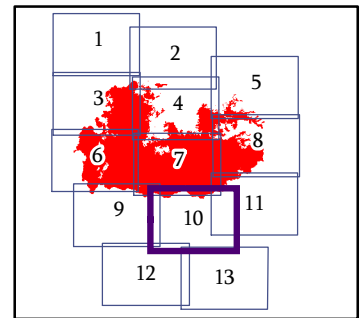
Miles
NAD 83 UTM Zone 10N
1:24,000



IAP MAP
PAGE 10 OF 13

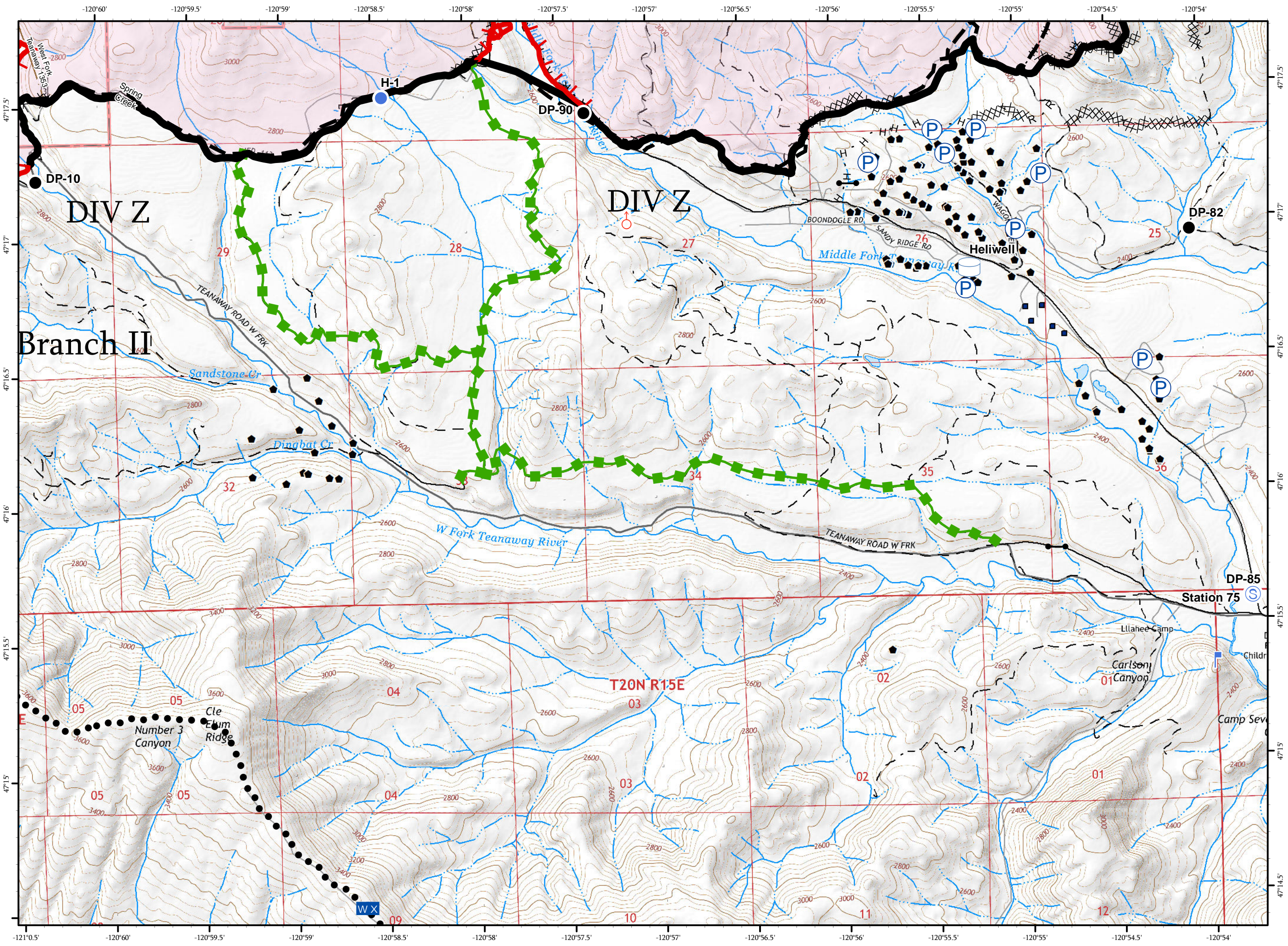
Jolly Mountain Fire
WA-OWF-000361
September 12, 2017
30,720 Acres
IR Flight
9/11/2017 @ 0130 Hrs

- Drop Point
- Gate
- Helispot
- Lookout
- Mobile Weather Unit
- Pump
- Spot Fire
- Staging Area
- Water Tank
- Uncontrolled Fire Edge
- Completed Line
- Completed Dozer Line
- Completed Hand Line
- Road as Completed Line
- Planned Fire Line
- Planned Secondary Line
- Escape Route
- Triaged Structure
- Roads
- 4WD/Unimproved
- FS Trails



Miles

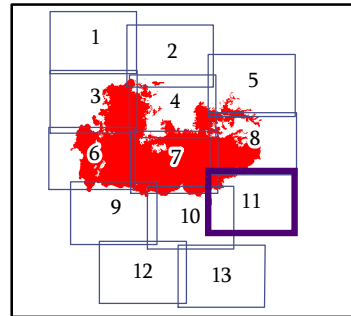
NAD 83 UTM Zone 10N
1:24,000



IAP MAP
PAGE 11 OF 13

Jolly Mountain Fire
WA-OWF-000361
September 12, 2017
30,720 Acres
IR Flight
9/11/2017 @ 0130 Hrs

- Drop Point
- Gate
- Lookout
- Pump
- Staging Area
- Water Tank
- Uncontrolled Fire Edge
- Completed Line
- Completed Dozer Line
- Completed Hand Line
- Road as Completed Line
- Planned Fire Line
- Escape Route
- Triaged Structure
- Roads
- 4WD/Unimproved

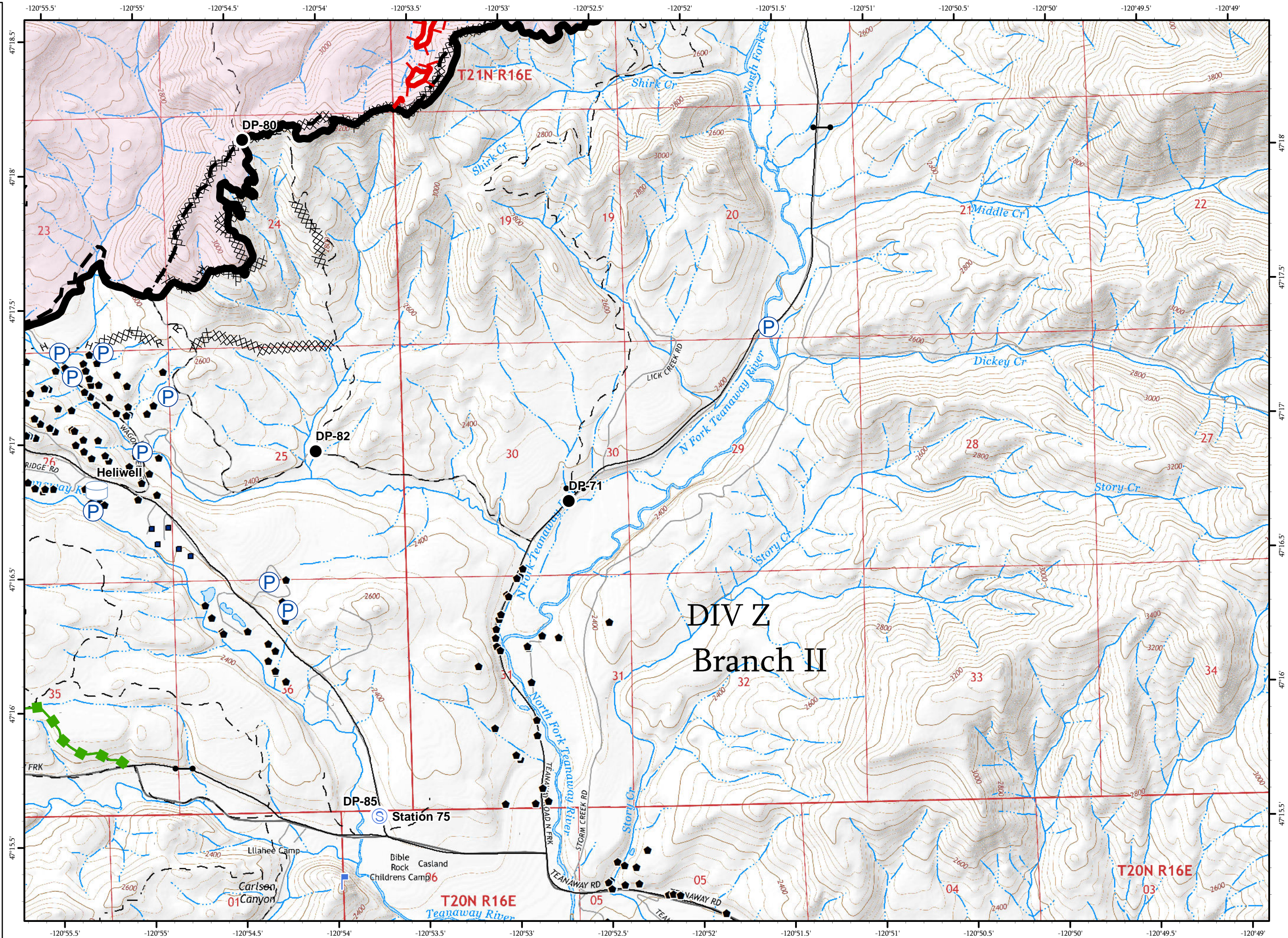


0 1/4 1/2

Miles





NAD 83 UTM Zone 10N


1:24,000





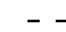




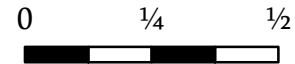
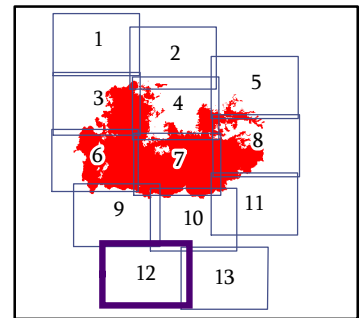
IAP MAP
PAGE 12 OF 13

Jolly Mountain Fire
WA-OWF-000361
September 12, 2017
30,720 Acres
IR Flight
9/11/2017 @ 0130 Hrs

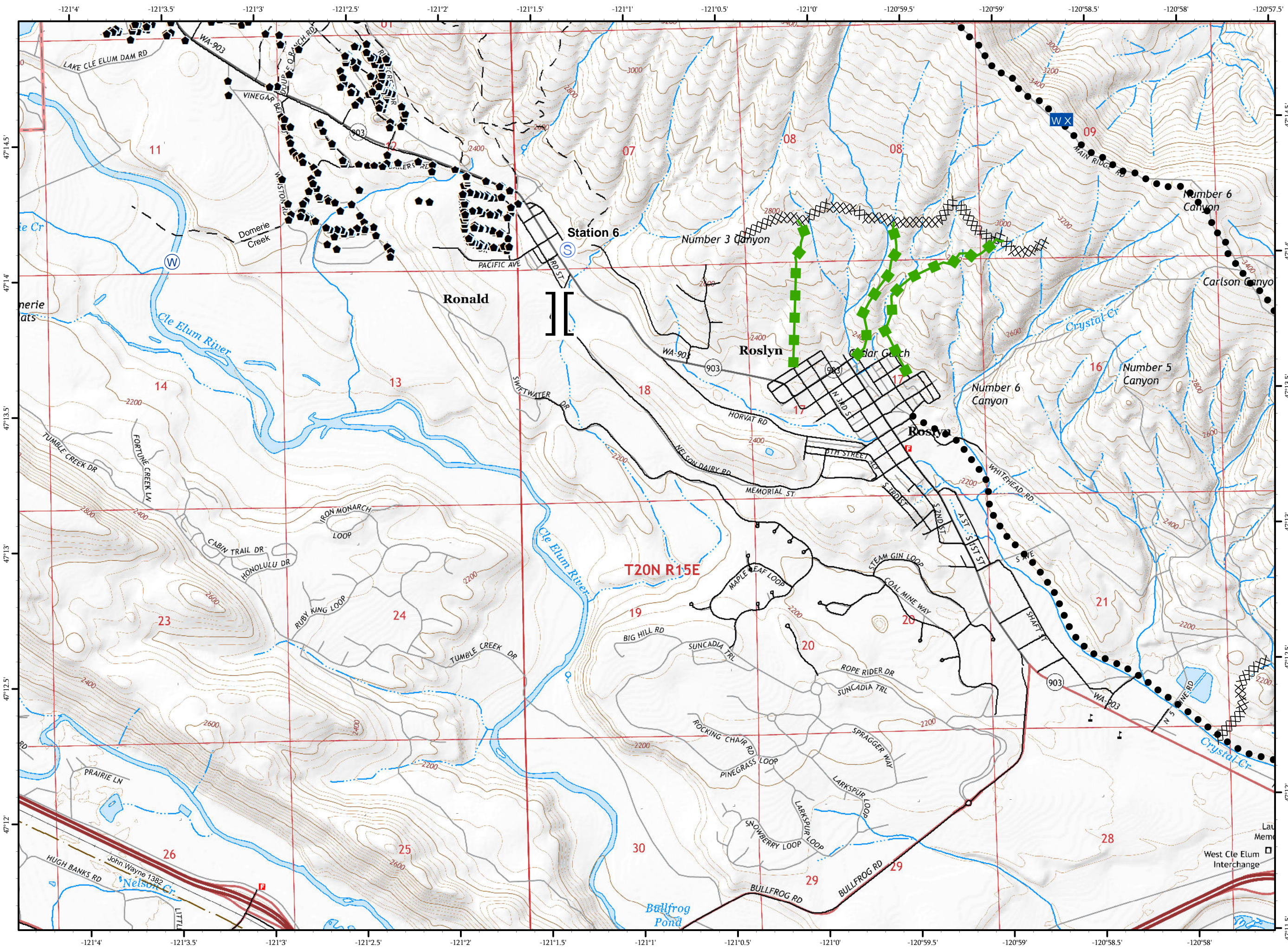
-  Drop Point
-  Mobile Weather Unit
-  Staging Area
-  Water Source

 Branch Break

-  Completed Dozer Line
-  Planned Secondary Line
-  Escape Route
-  Triaged Structure
-  Roads
-  4WD/Unimproved
-  FS Trails










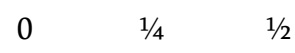
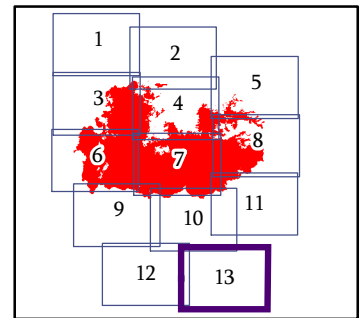
Miles
NAD 83 UTM Zone 10N
1:24,000



IAP MAP
PAGE 13 OF 13

Jolly Mountain Fire
WA-OWF-000361
September 12, 2017
30,720 Acres
IR Flight
9/11/2017 @ 0130 Hrs

-  Drop Point
-  Gate
-  Helibase
-  Structure Triage
-  Completed Dozer Line
-  Planned Secondary Line
-  Roads



Miles

NAD 83 UTM Zone 10N
1:24,000

