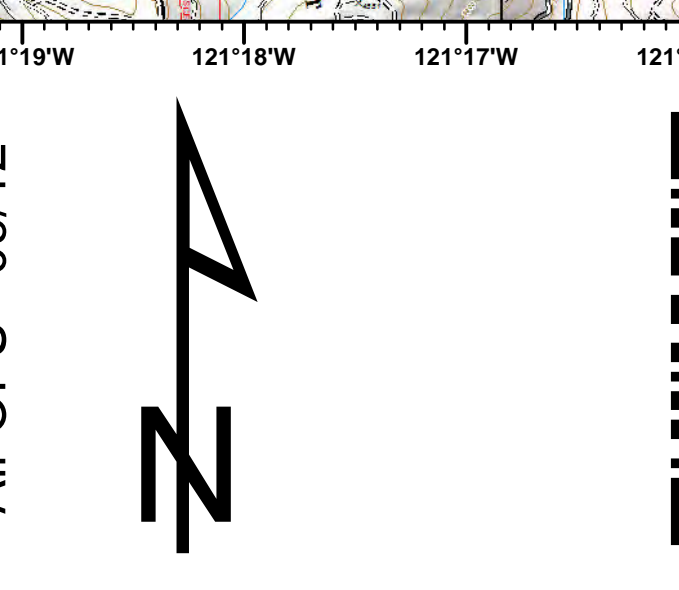
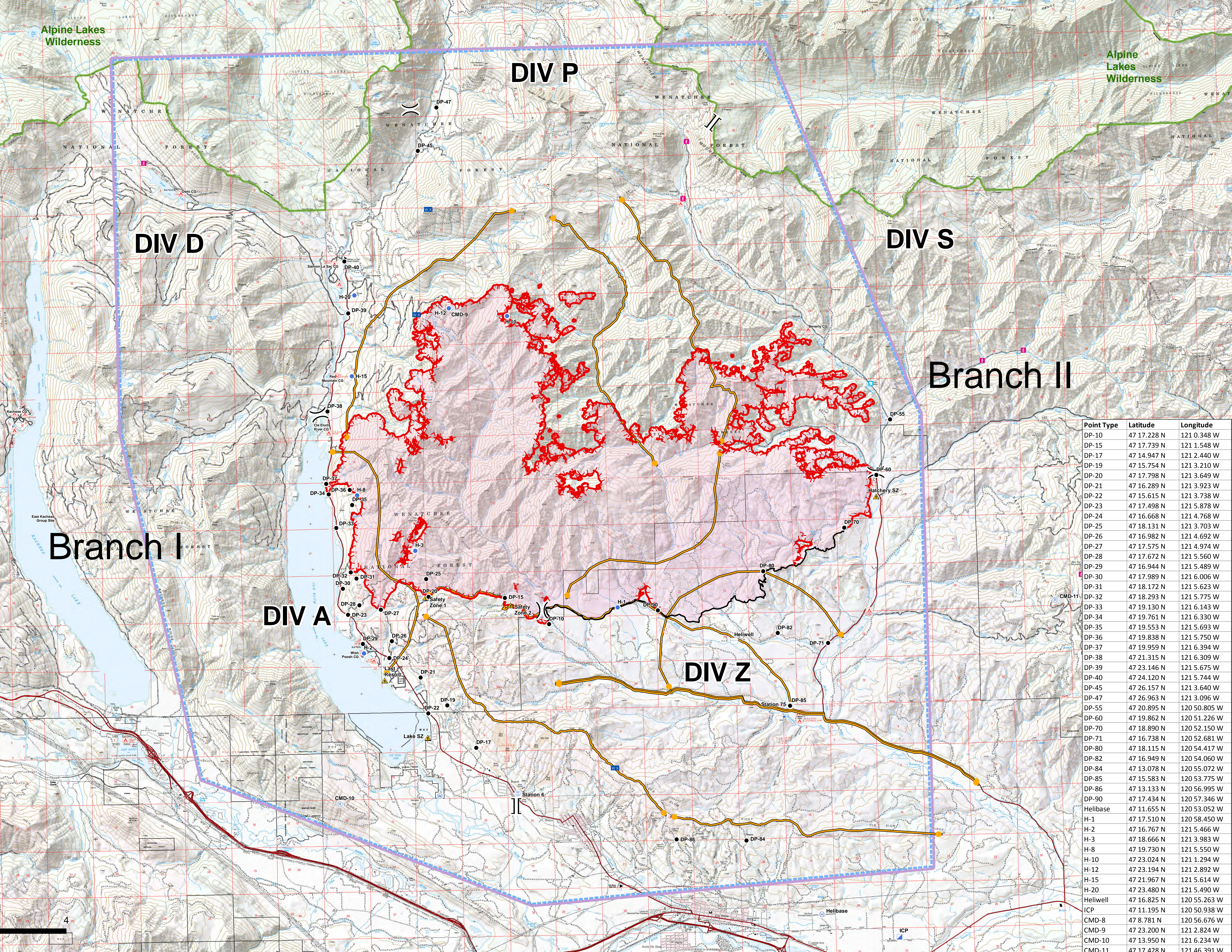


- Drop Point
  - ⊕ Helibase
  - Helispot
  - ▢ Incident Command Post
  - ⚡ Lookout
  - ☁ Mobile Weather Unit
  - Ⓜ Repeater
  - ▲ Safety Zone
  - ⊙ Spot Fire
  - ⊙ Staging Area
  - Ⓜ Water Source
  - Ⓜ Water Tank
  - )) Division Break
  - ]] Branch Break
  - ▤ TFR 7/5827
  - Ⓜ Recreation Residence
  - Ⓜ Trailhead
  - 🔥 Uncontrolled Fire Edge
  - ~ Completed Line
  - 👉 Management Action Point
- Ownership
- 🏠 Bureau of Land Management
  - 🌿 Fish and Wildlife Service
  - 🌲 Forest Service
  - 🌲 Forest Service Wilderness
  - 🏠 Private Lands
  - 🏠 State Lands
  - 🏠 Teamaway Community Forest
  - 🌿 The Nature Conservancy

Point Type	Latitude	Longitude
DP-10	47 17.228 N	121 0.348 W
DP-15	47 17.739 N	121 1.548 W
DP-17	47 14.947 N	121 2.440 W
DP-19	47 15.754 N	121 3.210 W
DP-20	47 17.798 N	121 3.649 W
DP-21	47 16.289 N	121 3.923 W
DP-22	47 15.615 N	121 3.738 W
DP-23	47 17.498 N	121 5.878 W
DP-24	47 16.668 N	121 4.768 W
DP-25	47 18.131 N	121 3.703 W
DP-26	47 16.982 N	121 4.692 W
DP-27	47 17.575 N	121 4.974 W
DP-28	47 17.672 N	121 5.560 W
DP-29	47 16.944 N	121 5.489 W
DP-30	47 17.989 N	121 6.006 W
DP-31	47 18.172 N	121 5.623 W
DP-32	47 18.293 N	121 5.775 W
DP-33	47 19.130 N	121 6.143 W
DP-34	47 19.761 N	121 6.330 W
DP-35	47 19.553 N	121 5.693 W
DP-36	47 19.838 N	121 5.750 W
DP-37	47 19.959 N	121 6.394 W
DP-38	47 21.315 N	121 6.309 W
DP-39	47 23.146 N	121 5.675 W
DP-40	47 24.120 N	121 5.744 W
DP-45	47 26.157 N	121 3.640 W
DP-47	47 26.963 N	121 3.096 W
DP-55	47 20.895 N	120 50.805 W
DP-60	47 19.862 N	120 51.226 W
DP-70	47 18.890 N	120 52.150 W
DP-71	47 16.738 N	120 52.681 W
DP-80	47 18.115 N	120 54.417 W
DP-82	47 16.949 N	120 54.060 W
DP-84	47 13.078 N	120 55.072 W
DP-85	47 15.583 N	120 53.775 W
DP-86	47 13.133 N	120 56.995 W
DP-90	47 17.434 N	120 57.346 W
Helibase	47 11.655 N	120 53.052 W
H-1	47 17.510 N	120 58.450 W
H-2	47 16.767 N	121 5.466 W
H-3	47 18.666 N	121 3.983 W
H-8	47 19.730 N	121 5.550 W
H-10	47 23.024 N	121 1.294 W
H-12	47 23.194 N	121 2.892 W
H-15	47 21.967 N	121 5.614 W
H-20	47 23.480 N	121 5.490 W
Helowell	47 16.825 N	120 55.263 W
ICP	47 11.195 N	120 50.938 W
CMD-8	47 8.781 N	120 56.676 W
CMD-9	47 23.200 N	121 2.824 W
CMD-10	47 13.950 N	121 6.234 W
CMD-11	47 17.428 N	121 46.391 W



Air OPS - 09/12



# JOLLY MOUNTAIN - AIR OPS MAP

## 30,720 ACRES

WA-OWF-000361, SEPTEMBER 12, 2017

NAD 83 UTM Zone 10N  
IR Flight 09/11 @ 0130 PDT

1:43,000

