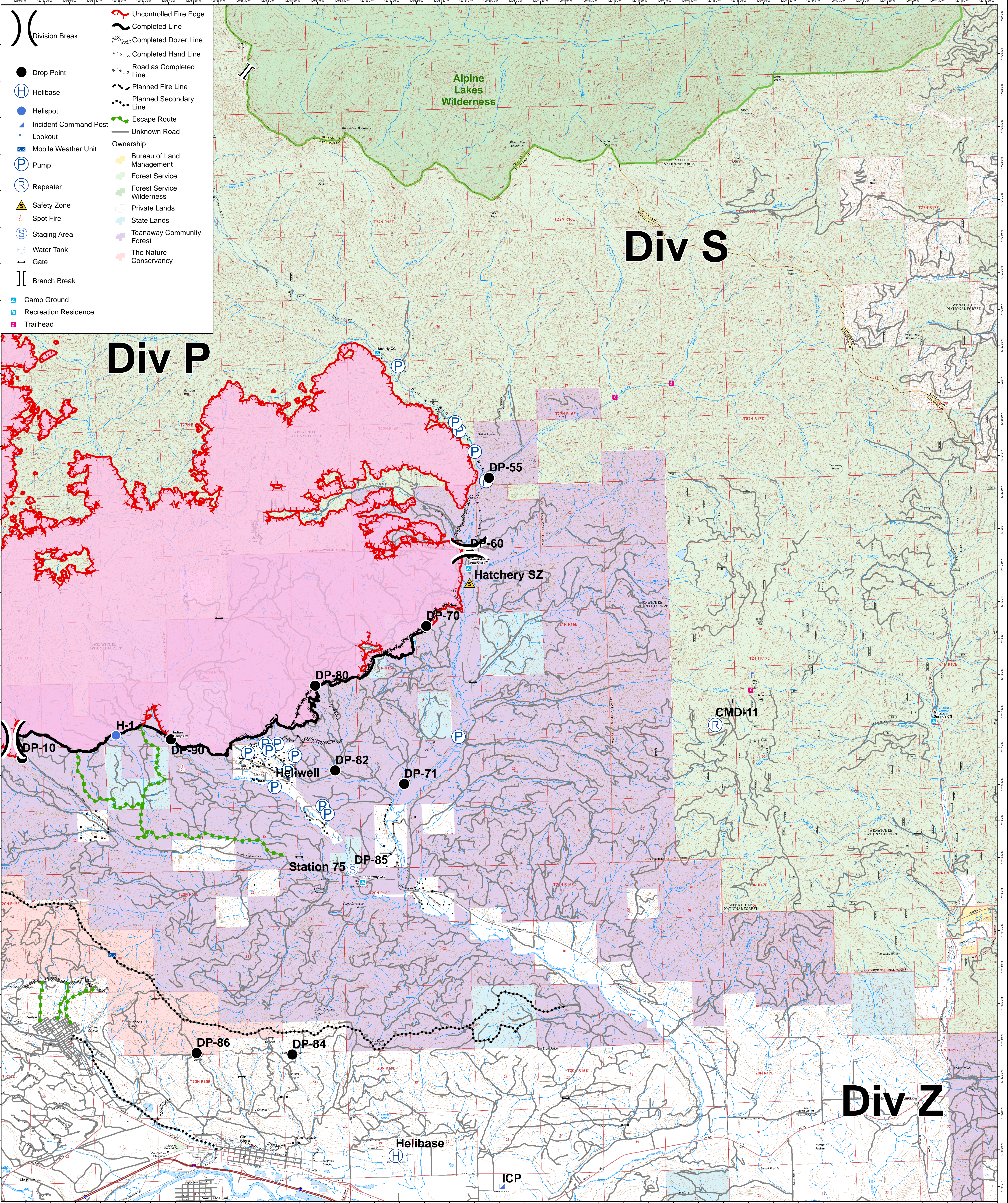


- Division Break
- Uncontrolled Fire Edge
- Completed Line
- Completed Dozer Line
- Completed Hand Line
- Road as Completed Line
- Planned Fire Line
- Planned Secondary Line
- Escape Route
- Unknown Road
- Ownership
- Bureau of Land Management
- Forest Service
- Forest Service Wilderness
- Private Lands
- State Lands
- Teaway Community Forest
- The Nature Conservancy
- Drop Point
- Helibase
- Helispot
- Incident Command Post
- Lookout
- Mobile Weather Unit
- Pump
- Repeater
- Safety Zone
- Spot Fire
- Staging Area
- Water Tank
- Gate
- Branch Break
- Camp Ground
- Recreation Residence
- Trailhead



Div P

Div S

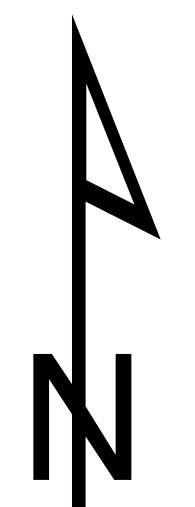
Div Z

JOLLY MOUNTAIN BRANCH 2 OPS MAP

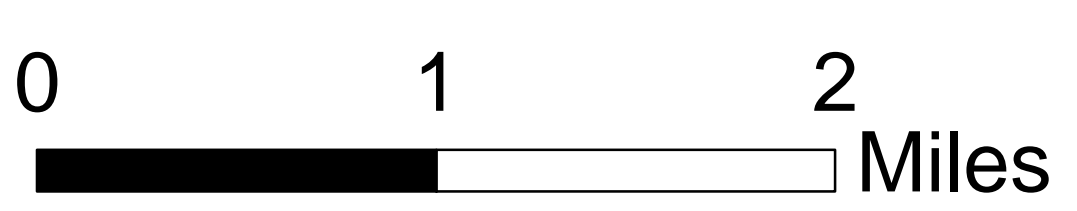
32,509 ACRES

WA-OWF-000361, SEPTEMBER 12, 2017

OPS-Branch 2 09/12



NAD 83 UTM Zone 10N
IR Flight
09/12/2017 @ 0015 hrs



1:30,500