



IAP MAP INDEX

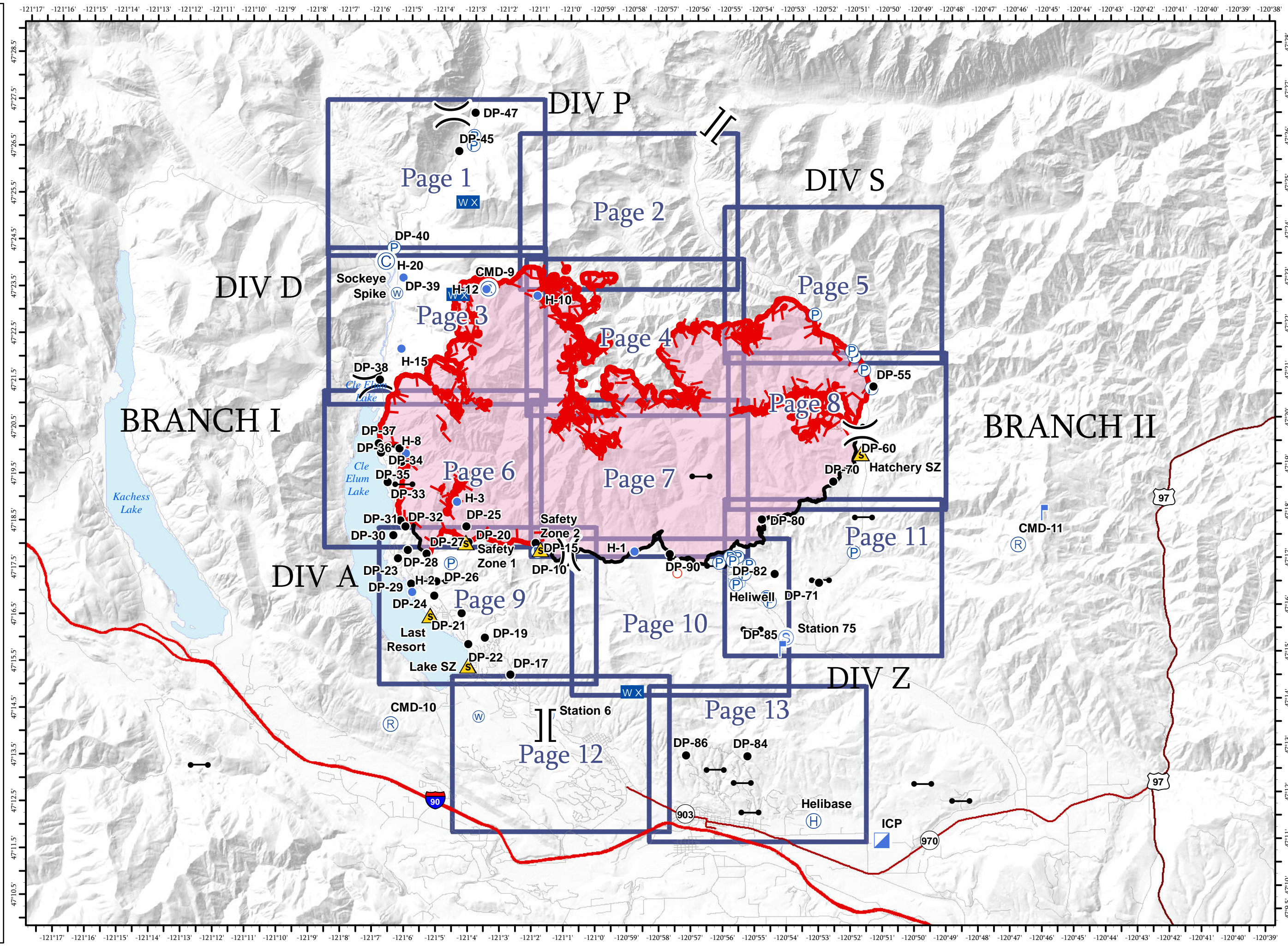
Jolly Mountain Fire
WA-OWF-000361
September 14, 2017
33,950 Acres
Perimeter Flight
9/13/2017 @ 0145 Hrs

- Camp
- Drop Point
- Gate
- Helibase
- Helispot
- Incident Command Post
- Lookout
- Mobile Weather Unit
- Pump
- Repeater
- Safety Zone
- Spot Fire
- Staging Area
- Water Source
- Water Tank
- Division Break
- Branch Break
- Uncontrolled Fire Edge
- Completed Line



0 1/2 1 2
Miles

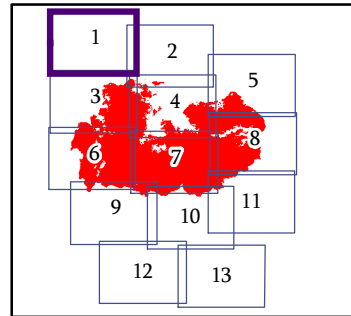
NAD 83 UTM Zone 10N



IAP MAP PAGE 1 OF 13

Jolly Mountain Fire
WA-OWF-000361
September 14, 2017
33,950 Acres
IR Flight
9/13/2017 @ 0145 Hrs

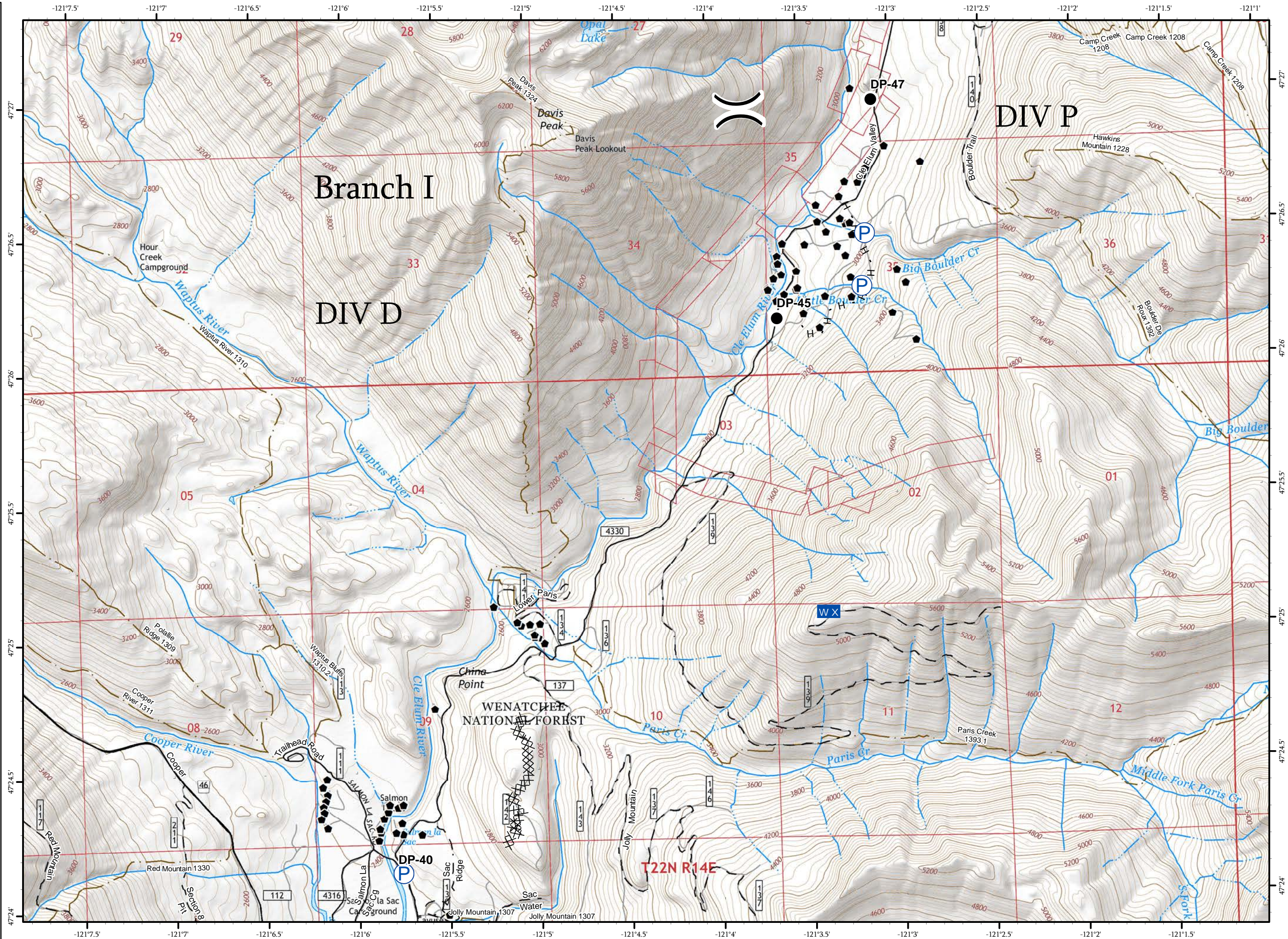
- Drop Point
- W X Mobile Weather Unit
- P Pump
- ◆ Triaged Structure
- XXXX Completed Dozer Line
- H - Completed Hand Line
- Roads
- - 4WD/Unimproved
- FS Trails



0 1/4 1/2





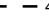

Miles

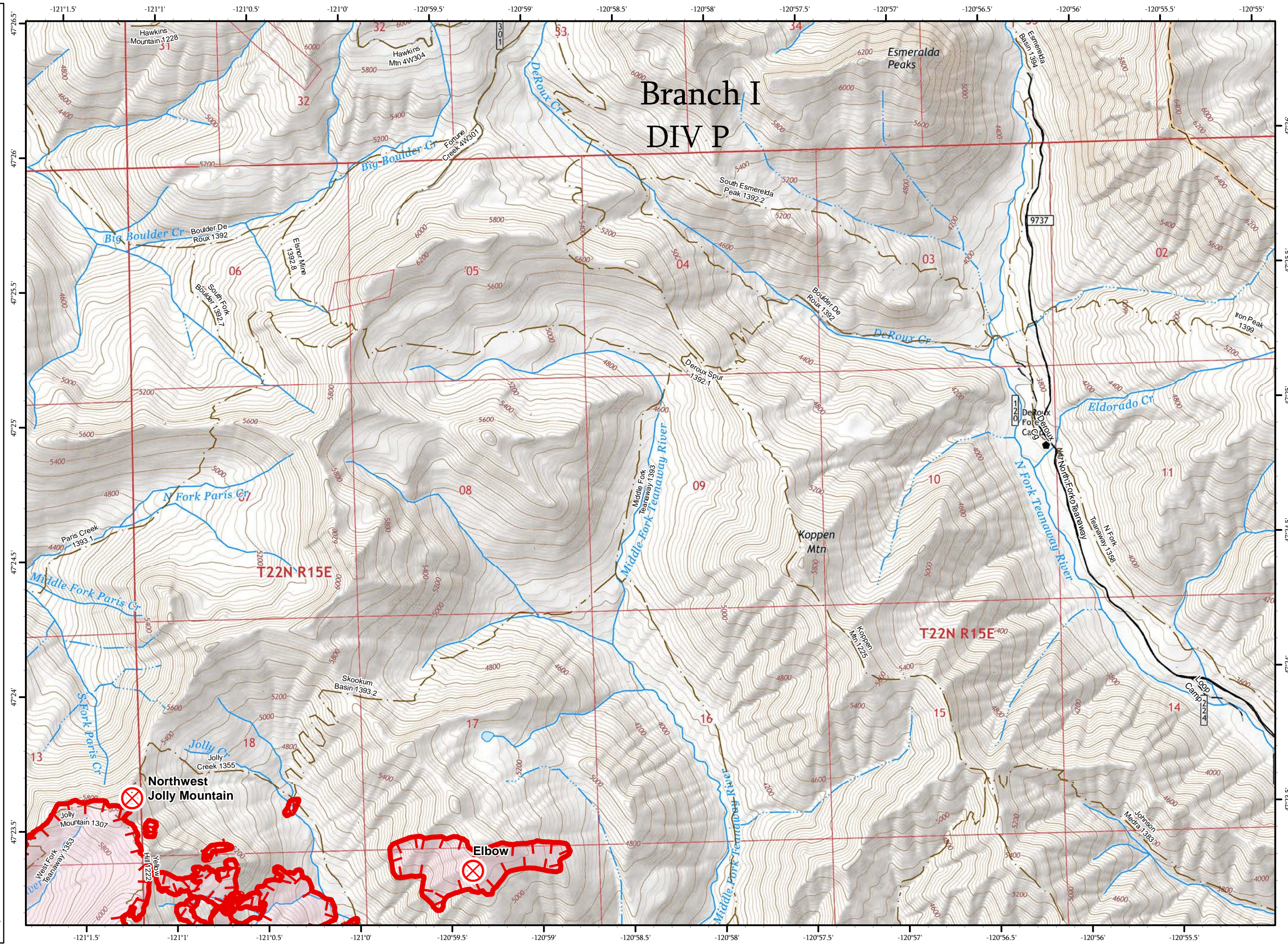
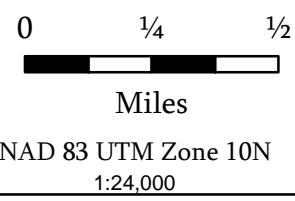
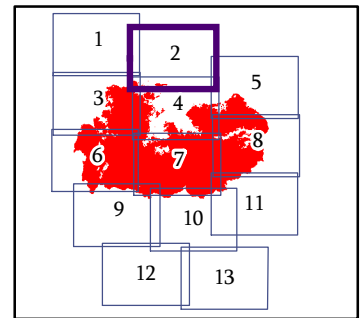
NAD 83 UTM Zone 10N
1:24,000



IAP MAP
PAGE 2 OF 13
















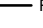

Jolly Mountain Fire
WA-OWF-000361
September 14, 2017
33,950 Acres
IR Flight
9/13/2017 @ 0145 Hrs

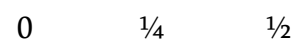
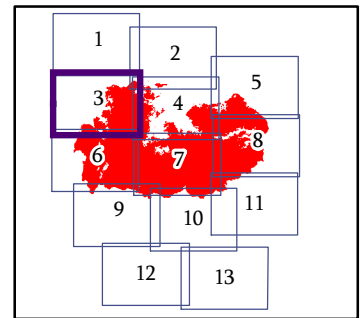
-  Fire Origin
-  Triaged Structure
-  Uncontrolled Fire Edge
-  Roads
-  4WD/Unimproved
-  FS Trails



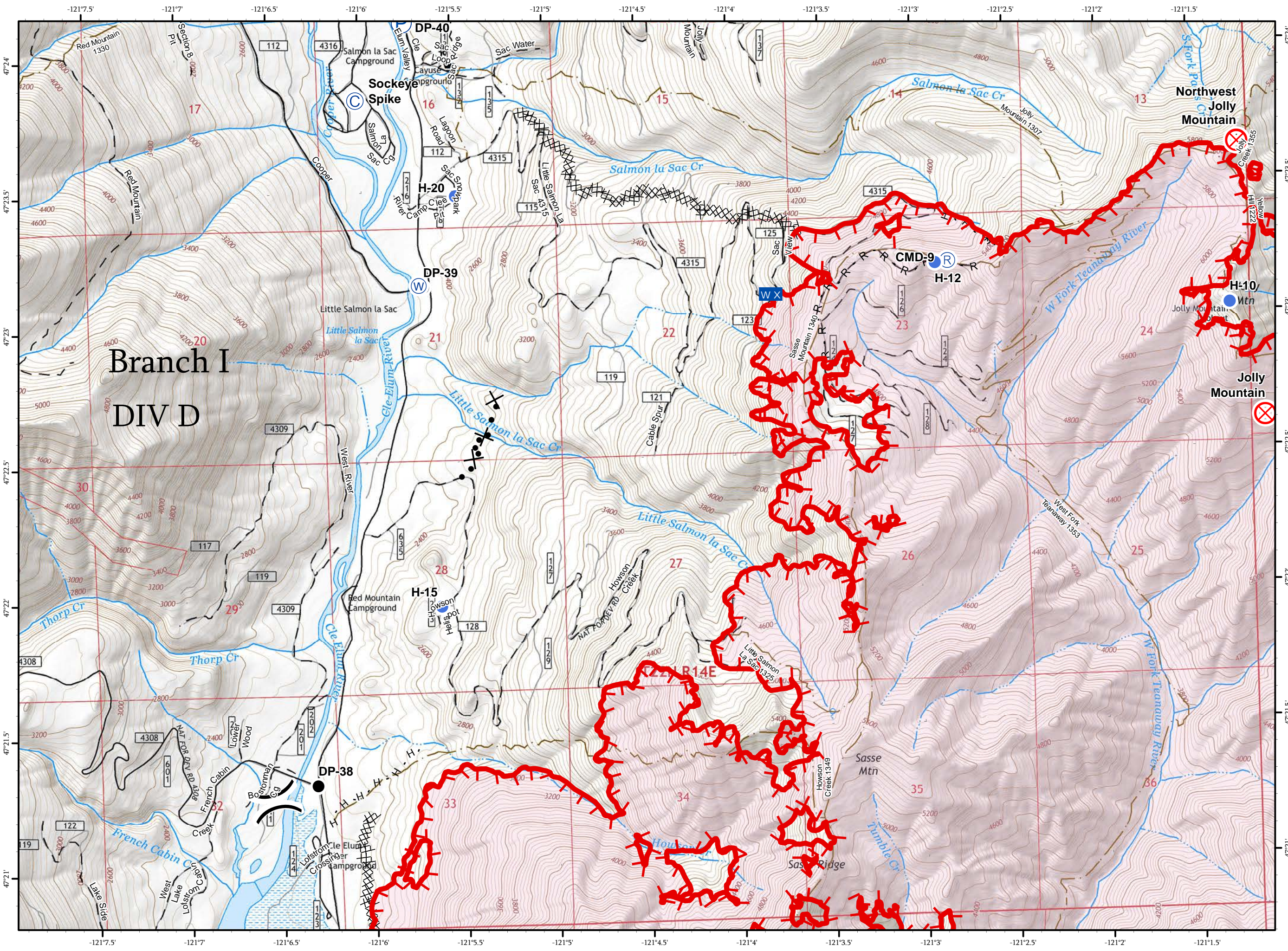
IAP MAP
PAGE 3 OF 13

Jolly Mountain Fire
WA-OWF-000361
September 14, 2017
33,950 Acres
IR Flight
9/13/2017 @ 0145 Hrs

-  Camp
-  Drop Point
-  Fire Origin
-  Helispot
-  Mobile Weather Unit
-  Pump
-  Repeater
-  Water Source
-  Triaged Structure
-  Uncontrolled Fire Edge
-  Completed Dozer Line
-  Completed Hand Line
-  Road as Completed Line
-  Proposed Dozer Line
-  Roads
-  4WD/Unimproved
-  FS Trails



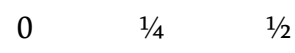
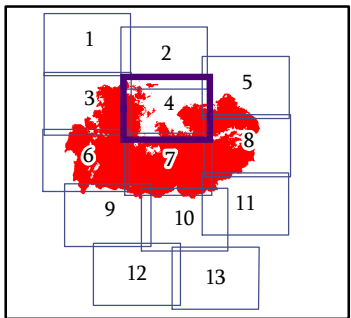
Miles
NAD 83 UTM Zone 10N
1:24,000



IAP MAP
PAGE 4 OF 13

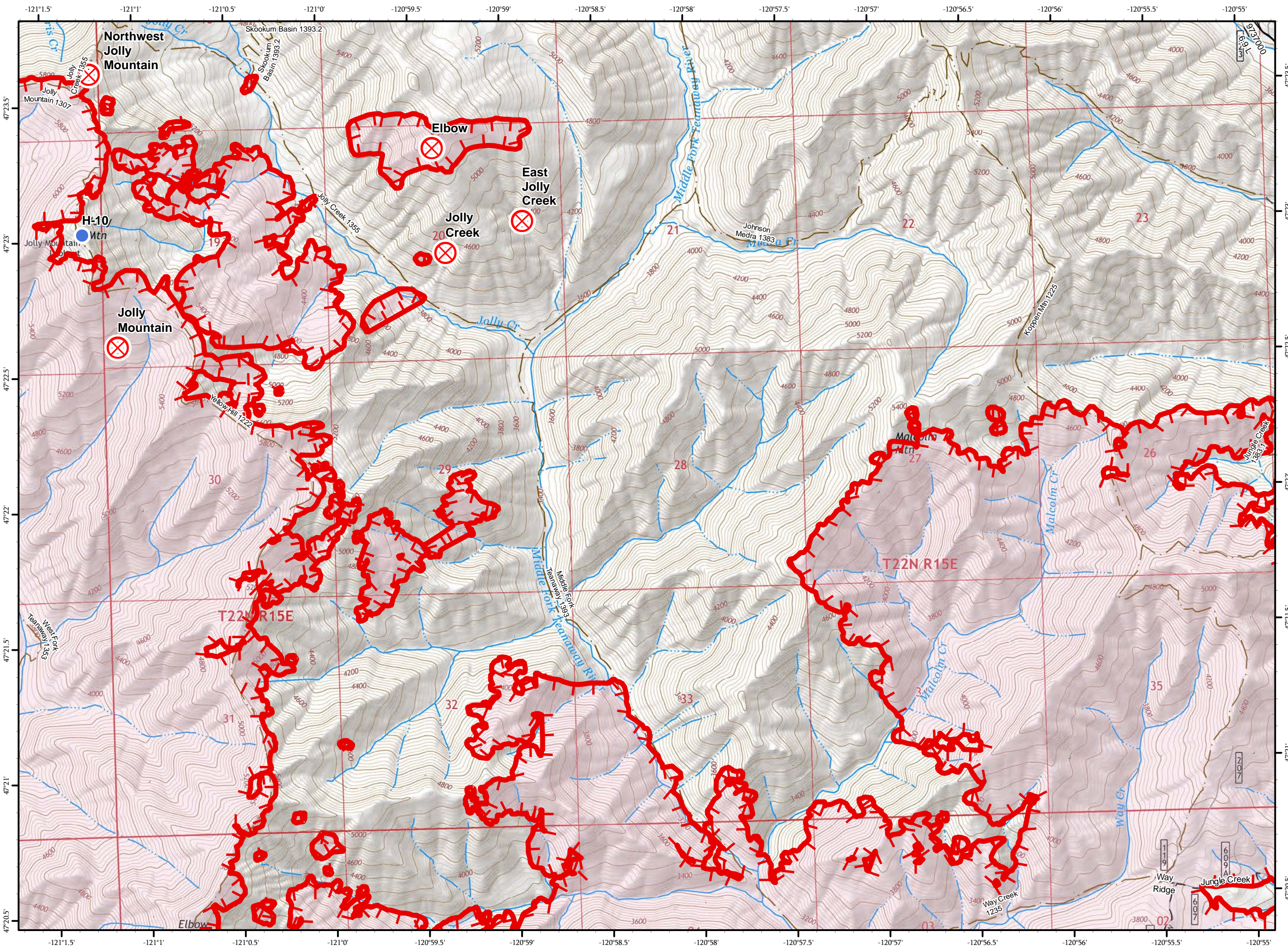
Jolly Mountain Fire
WA-OWF-000361
September 14, 2017
33,950 Acres
IR Flight
9/13/2017 @ 0145 Hrs

-  Fire Origin
-  Helispot
-  Uncontrolled Fire Edge
-  Roads
-  4WD/Unimproved
-  FS Trails



Miles

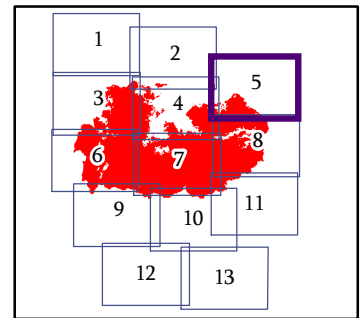
NAD 83 UTM Zone 10N
1:24,000



IAP MAP
PAGE 5 OF 13

Jolly Mountain Fire
WA-OWF-000361
September 14, 2017
33,950 Acres
IR Flight
9/13/2017 @ 0145 Hrs

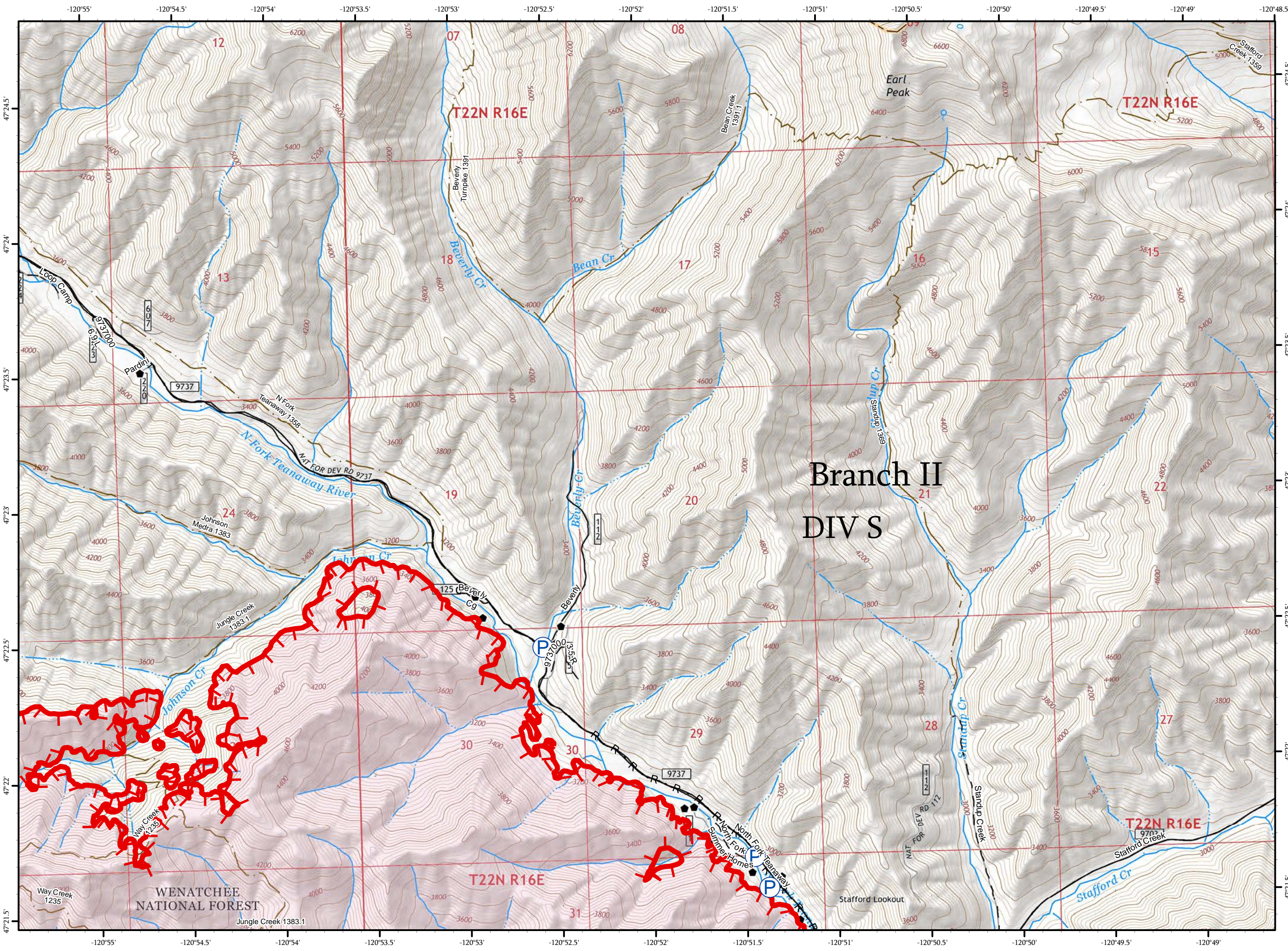
- Pump
- Triaged Structure
- Uncontrolled Fire Edge
- Road as Completed Line
- Roads
- 4WD/Unimproved
- FS Trails



0 1/4 1/2



Miles

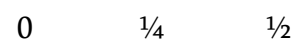
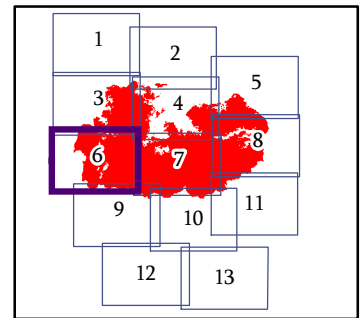
NAD 83 UTM Zone 10N
1:24,000



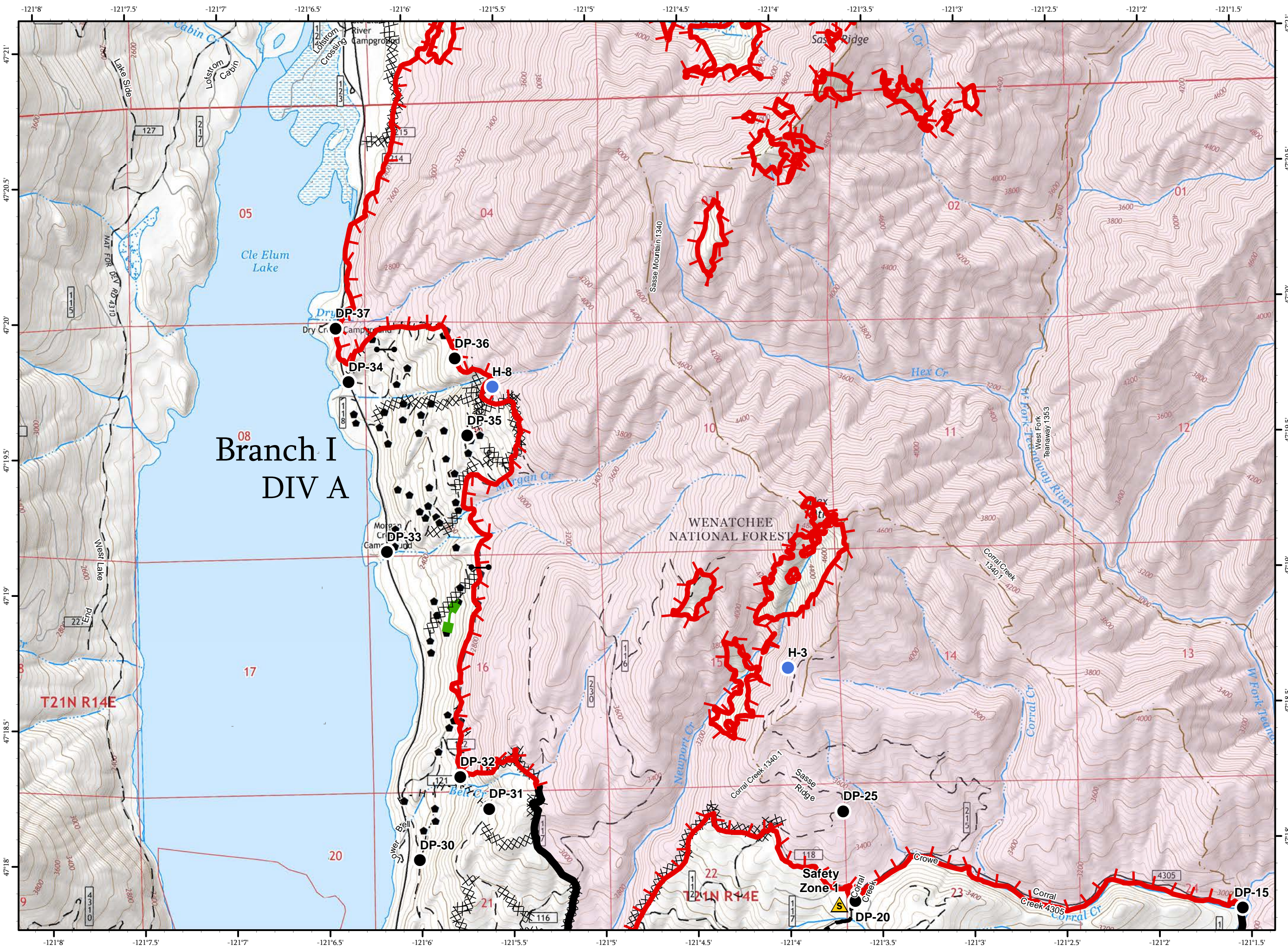
IAP MAP
PAGE 6 OF 13

Jolly Mountain Fire
WA-OWF-000361
September 14, 2017
33,950 Acres
IR Flight
9/13/2017 @ 0145 Hrs

-  Drop Point
-  Gate
-  Helispot
-  Safety Zone
-  Triaged Structure
-  Uncontrolled Fire Edge
-  Completed Line
-  Completed Dozer Line
-  H - Completed Hand Line
-  Planned Fire Line
-  Escape Route
-  Roads
-  4WD/Unimproved
-  FS Trails


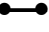














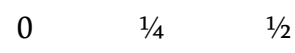
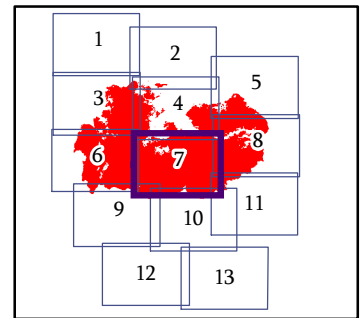
Miles
NAD 83 UTM Zone 10N
1:24,000



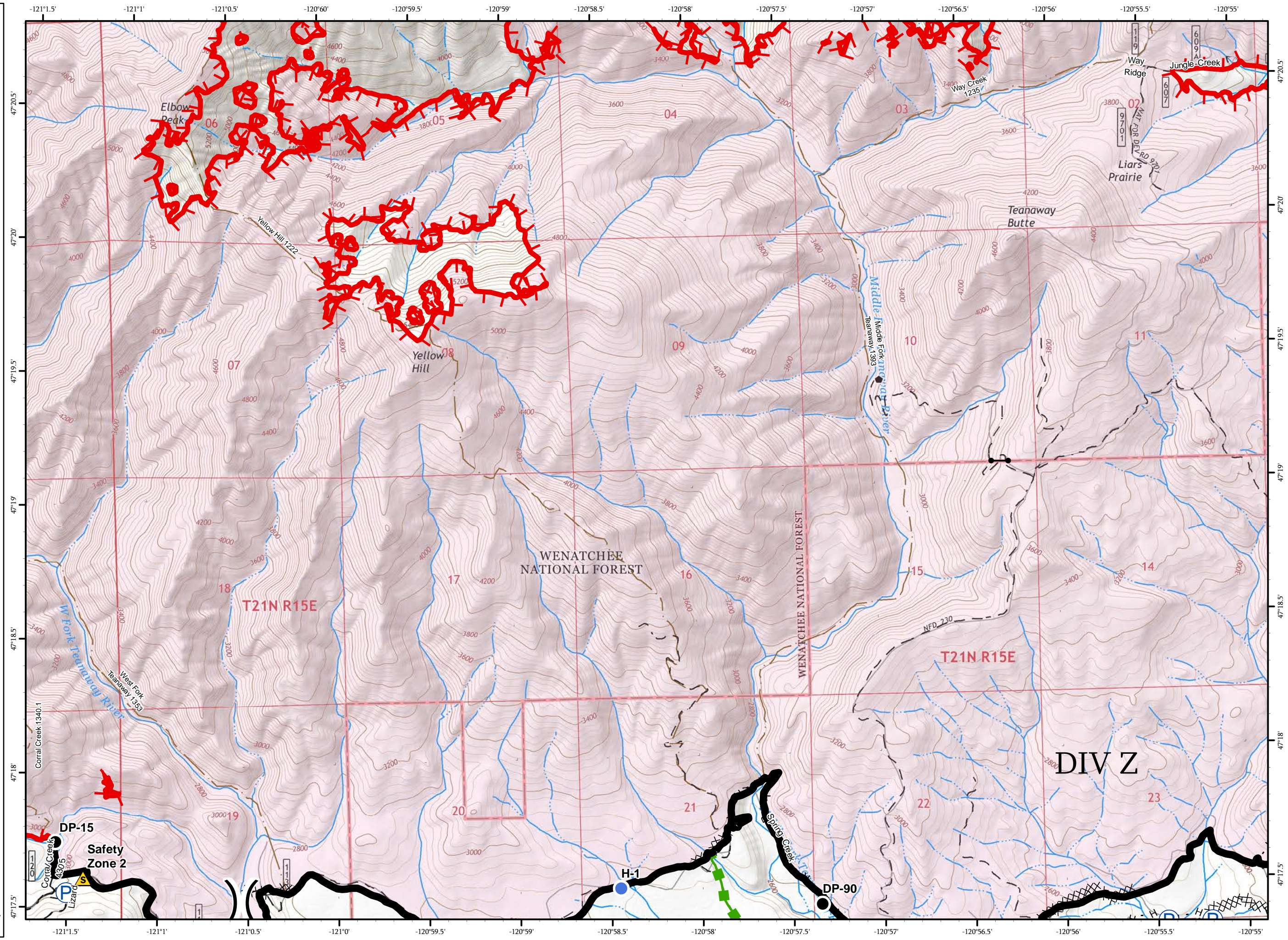
IAP MAP
PAGE 7 OF 13

Jolly Mountain Fire
WA-OWF-000361
September 14, 2017
33,950 Acres
IR Flight
9/13/2017 @ 0145 Hrs

-  Drop Point
-  Gate
-  Helispot
-  Pump
-  Safety Zone
-  Triaged Structure
-  Uncontrolled Fire Edge
-  Completed Line
-  Completed Dozer Line
-  H - Completed Hand Line
-  R - Road as Completed Line
-  Escape Route
-  Roads
-  4WD/Unimproved
-  FS Trails









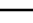




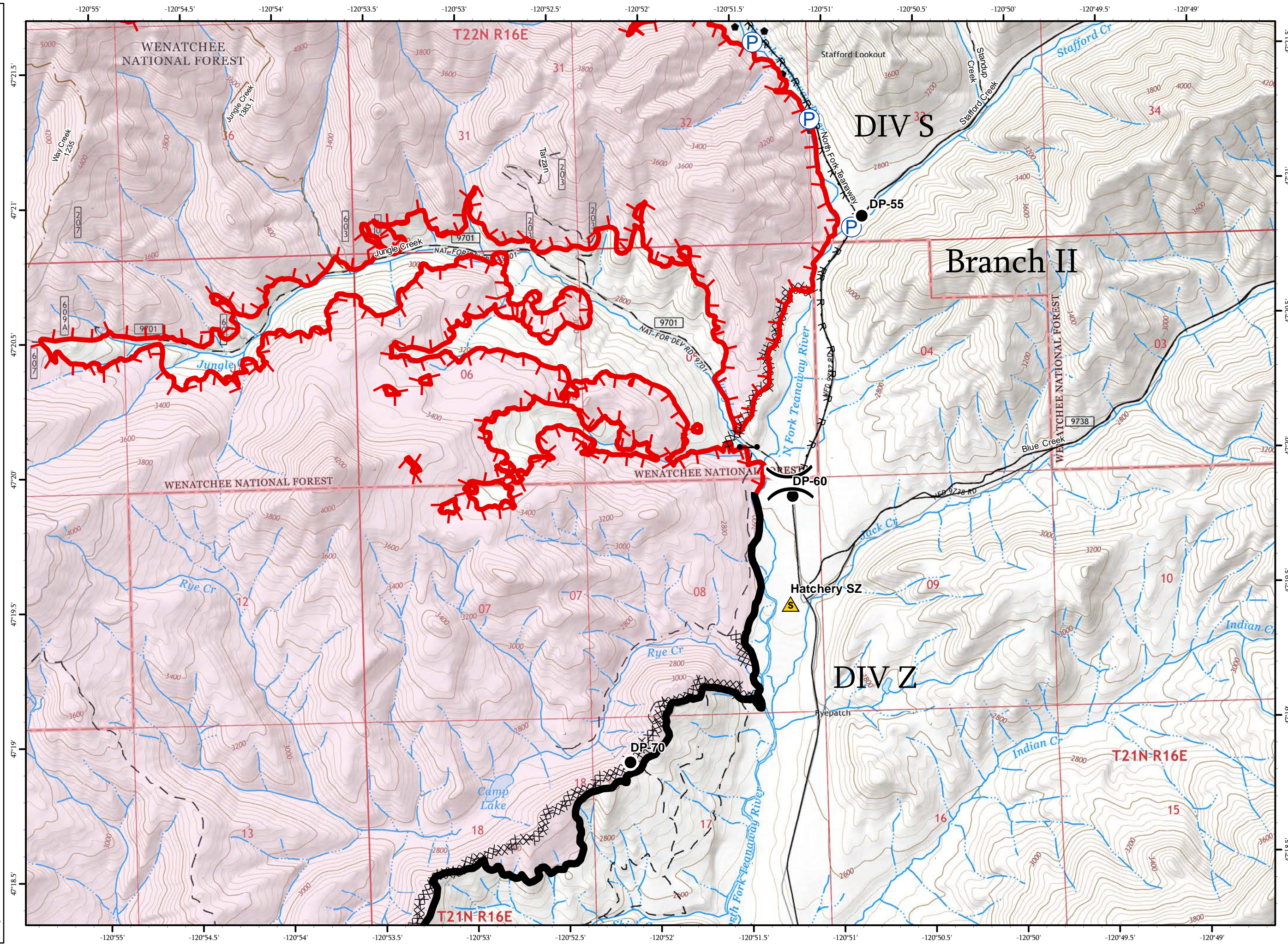
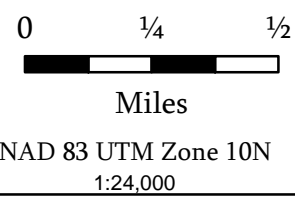
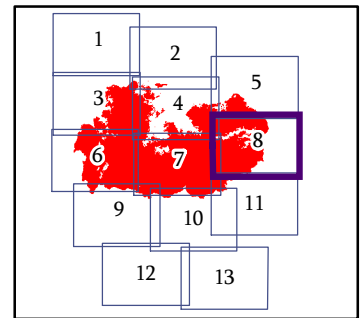
Miles
NAD 83 UTM Zone 10N
1:24,000



IAP MAP
PAGE 8 OF 13
















Jolly Mountain Fire
WA-OWF-000361
September 14, 2017
33,950 Acres
IR Flight
9/13/2017 @ 0145 Hrs

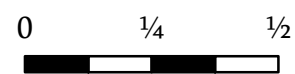
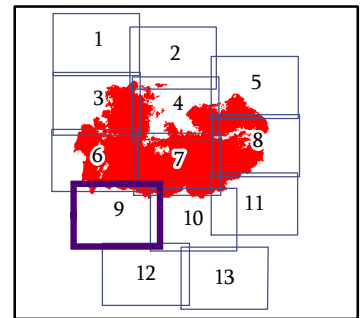
-  Drop Point
-  Gate
-  Pump
-  Safety Zone
-  Triaged Structure
-  Uncontrolled Fire Edge
-  Completed Line
-  Completed Dozer Line
- R - Road as Completed Line
-  Roads
-  4WD/Unimproved
-  FS Trails



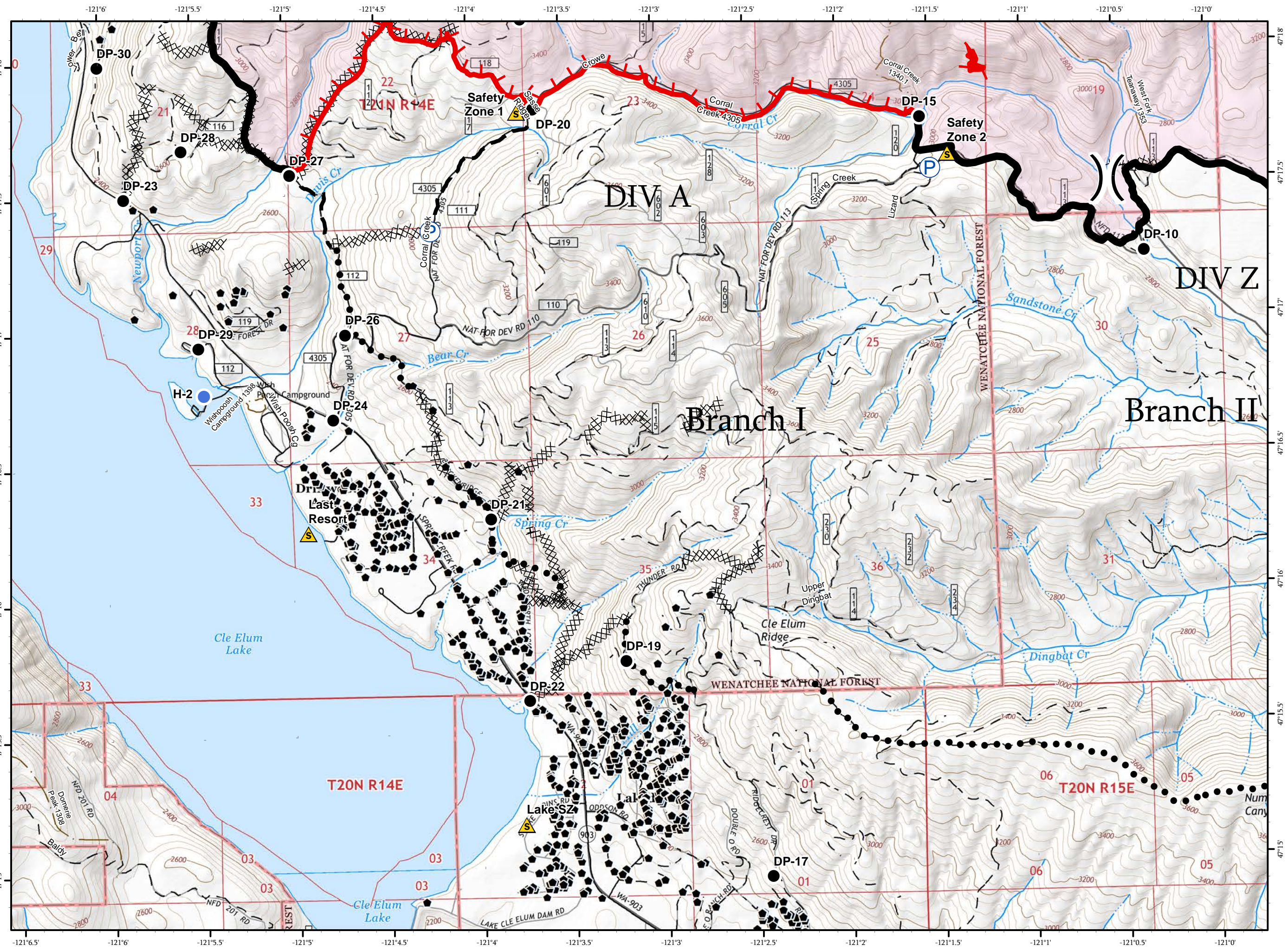
IAP MAP
PAGE 9 OF 13

Jolly Mountain Fire
WA-OWF-000361
September 14, 2017
33,950 Acres
IR Flight
9/13/2017 @ 0145 Hrs

-  Drop Point
-  Gate
-  Helispot
-  Pump
-  Safety Zone
-  Triaged Structure
-  Uncontrolled Fire Edge
-  Completed Line
-  Completed Dozer Line
-  Completed Hand Line
-  Planned Fire Line
-  Planned Secondary Line
-  Roads
-  4WD/Unimproved
-  FS Trails




















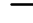


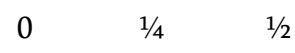
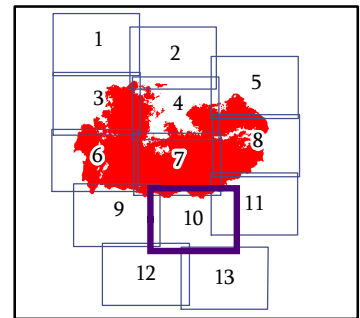
Miles
NAD 83 UTM Zone 10N
1:24,000



IAP MAP
PAGE 10 OF 13

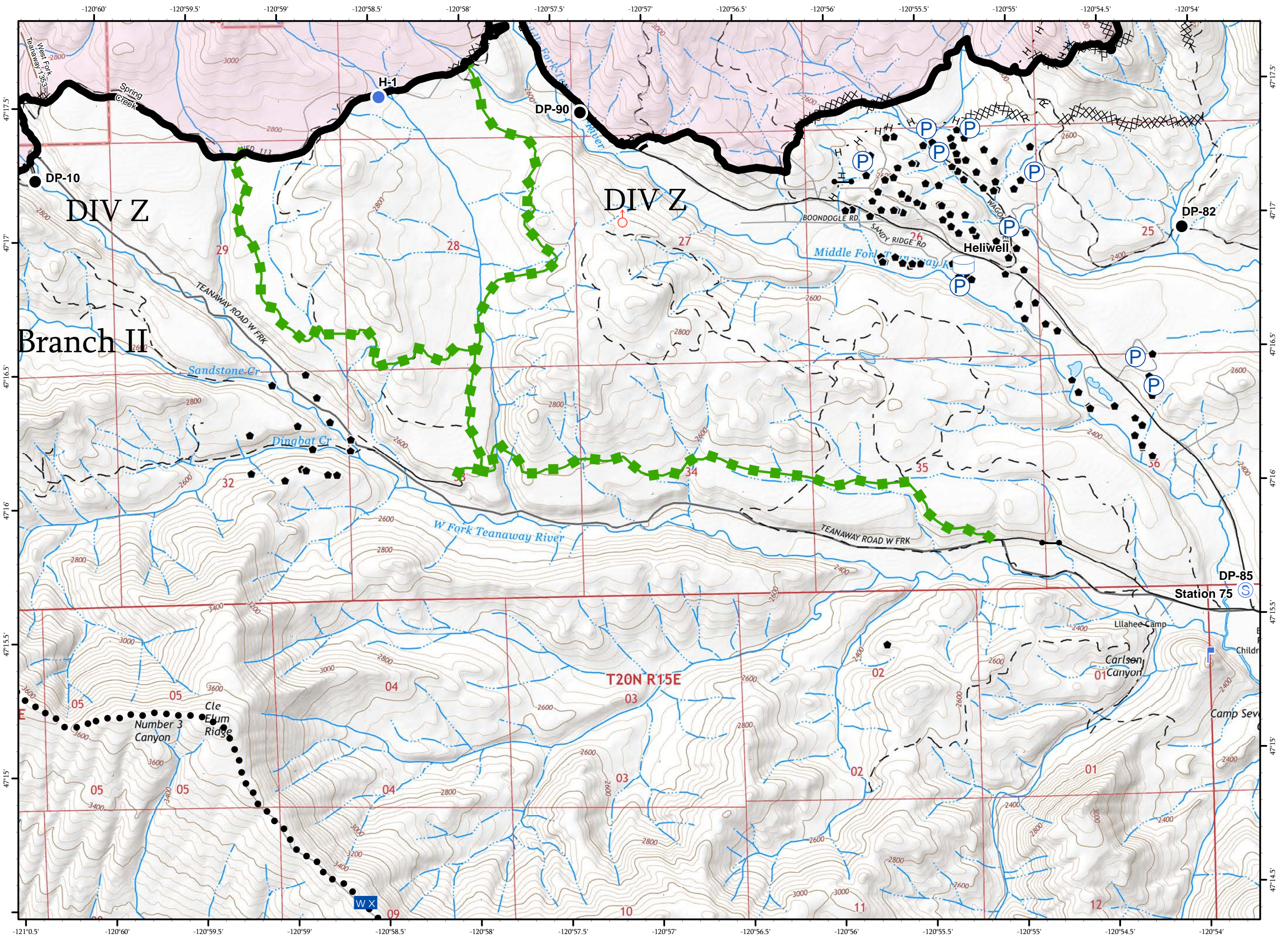
Jolly Mountain Fire
WA-OWF-000361
September 14, 2017
33,950 Acres
IR Flight
9/13/2017 @ 0145 Hrs

-  Drop Point
-  Gate
-  Helispot
-  Lookout
-  Mobile Weather Unit
-  Pump
-  Spot Fire
-  Staging Area
-  Water Tank
-  Triaged Structure
-  Completed Line
-  Completed Dozer Line
-  H - Completed Hand Line
-  R - Road as Completed Line
-  Planned Fire Line
-  Planned Secondary Line
-  Escape Route
-  Roads
-  4WD/Unimproved
-  FS Trails



Miles

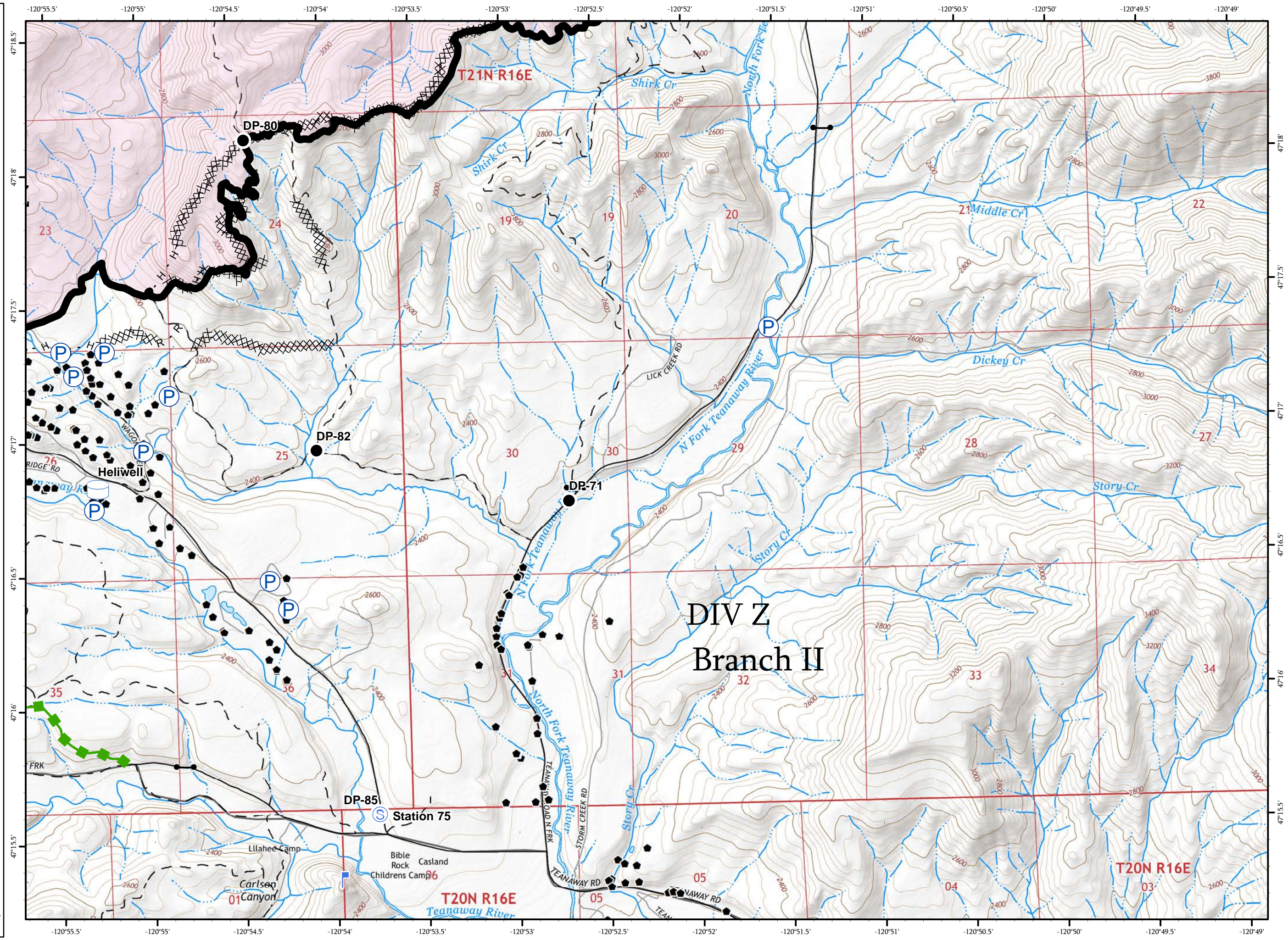
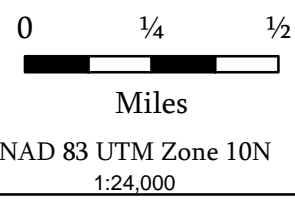
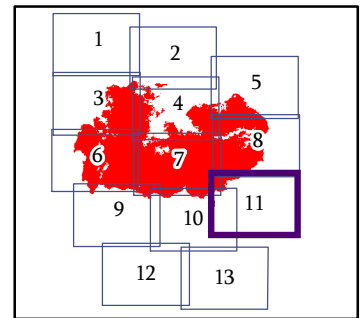
NAD 83 UTM Zone 10N
1:24,000



IAP MAP
PAGE 11 OF 13













Jolly Mountain Fire
WA-OWF-000361
September 14, 2017
33,950 Acres
IR Flight
9/13/2017 @ 0145 Hrs

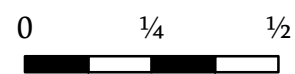
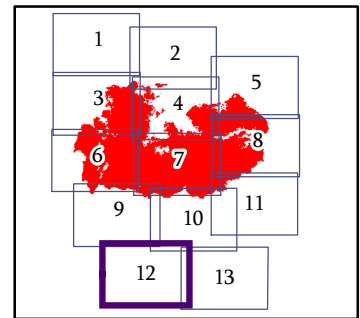
- Drop Point
- Gate
- Lookout
- Pump
- Staging Area
- Water Tank
- Triaged Structure
- Completed Line
- Completed Dozer Line
- Completed Hand Line
- Road as Completed Line
- Escape Route
- Roads
- 4WD/Unimproved



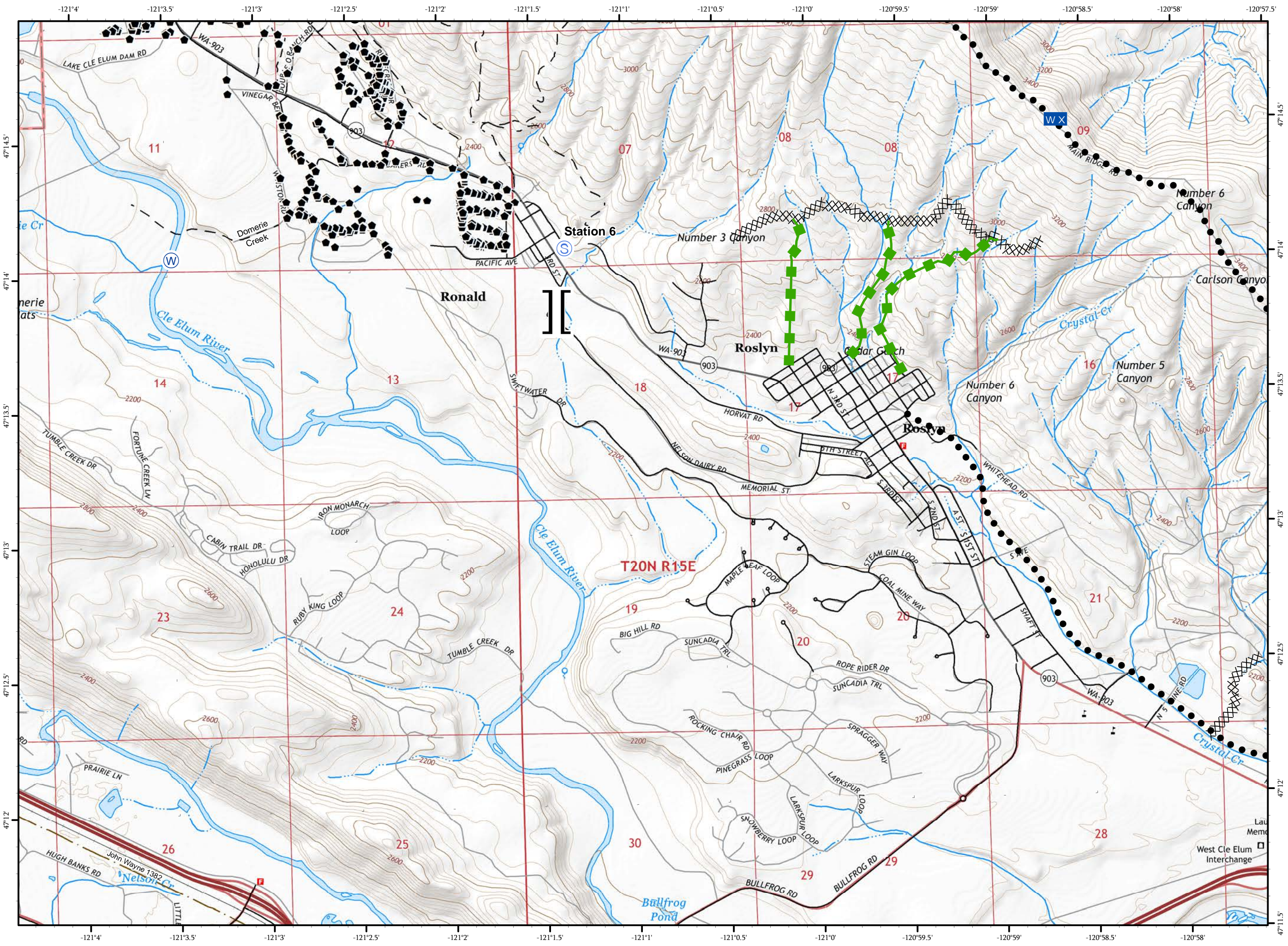
IAP MAP
PAGE 12 OF 13

Jolly Mountain Fire
WA-OWF-000361
September 14, 2017
33,950 Acres
IR Flight
9/13/2017 @ 0145 Hrs

-  Drop Point
-  Mobile Weather Unit
-  Staging Area
-  Water Source
-  Branch Break
-  Triaged Structure
-  Completed Dozer Line
-  Planned Secondary Line
-  Escape Route
-  Roads
-  4WD/Unimproved
-  FS Trails





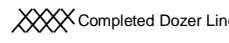




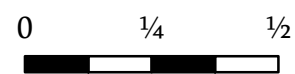
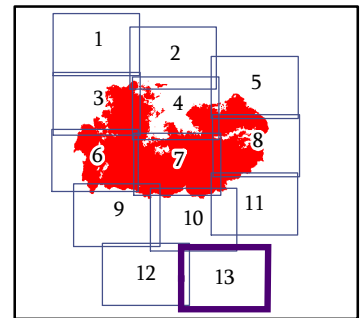
Miles
NAD 83 UTM Zone 10N
1:24,000



IAP MAP
PAGE 13 OF 13

Jolly Mountain Fire
WA-OWF-000361
September 14, 2017
33,950 Acres
IR Flight
9/13/2017 @ 0145 Hrs

-  Drop Point
-  Gate
-  Helibase
-  Structure Triage
-  Completed Dozer Line
-  Planned Secondary Line
-  Roads



Miles
NAD 83 UTM Zone 10N
1:24,000

