

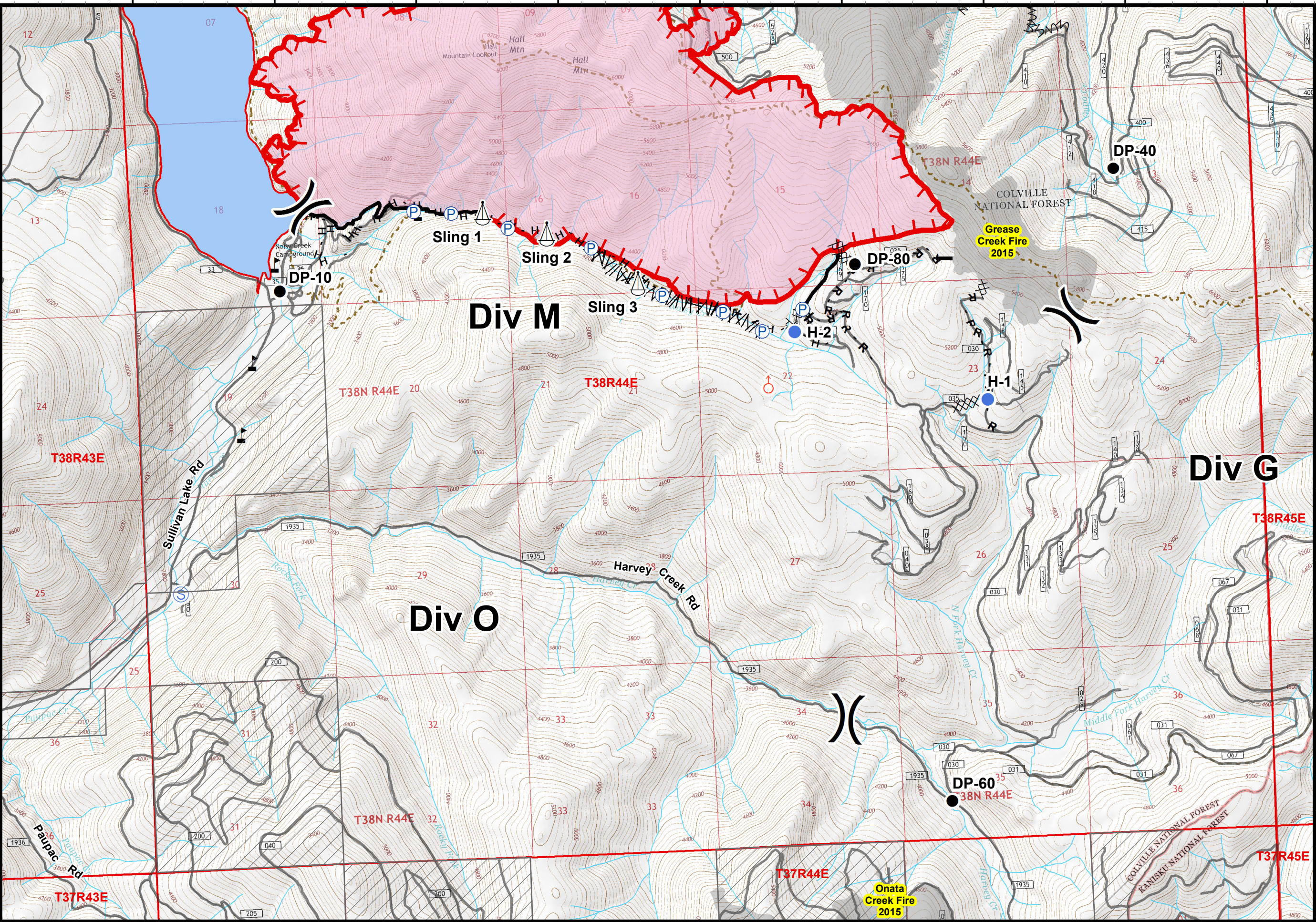
117°18'W 117°17'W 117°16'W 117°15'W 117°14'W 117°13'W 117°12'W 117°11'W 117°10'W

48°48'N

48°47'N

48°46'N

48°45'N



117°19'W 117°18'W 117°17'W 117°16'W 117°15'W 117°14'W 117°13'W 117°12'W 117°11'W 117°10'W

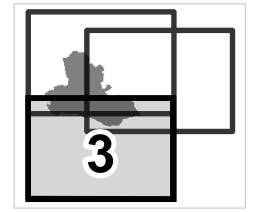
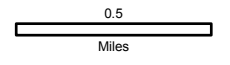
Noisy Creek Fire

WA-COF-001416

IAP Map

08/06/2017
Day Shift

3,380 acres (total)
Perimeter as of 08/05/2017 @ 1200



Page 3 of 3

Magnetic Declination: +14.89° E



- Drop Point
- Helispot
- Pump
- Sling Site
- Spot Fire
- Staging Area
- Value at Risk
- Division Break

- Uncontrolled Fire Edge
- Completed Line
- Completed Dozer Line
- Completed Hand Line
- Road as Completed Line
- Line Break Completed
- Fire Break Planned or Incomplete
- Private Land
- Wildfire Daily Fire Perimeter
- Historic Fires