

117°25'W 117°24'W 117°23'W 117°22'W 117°21'W 117°20'W 117°19'W 117°18'W 117°17'W 117°16'W 117°15'W 117°14'W 117°13'W 117°12'W 117°11'W 117°10'W 117°9'W 117°8'W 117°7'W 117°6'W 117°5'W

Noisy Creek Fire	LON_DM	LAT_DM
Drop Points		
DP-10	117° 17.043' W	48° 47.286' N
DP-20	117° 16.699' W	48° 50.403' N
DP-30	117° 13.606' W	48° 50.082' N
DP-40	117° 11.132' W	48° 47.701' N
DP-50	117° 08.786' W	48° 48.404' N
DP-60	117° 12.454' W	48° 44.783' N
DP-80	117° 12.983' W	48° 47.304' N
Helispots		
H-1	117° 12.088' W	48° 46.648' N
H-2	117° 13.429' W	48° 46.999' N
H-10	117° 10.021' W	48° 49.243' N
H-20	117° 09.540' W	48° 46.860' N
H-50	117° 16.107' W	48° 49.950' N
Sling Sites		
Sling 1	117° 15.595' W	48° 47.613' N
Sling 2	117° 15.147' W	48° 47.503' N
Sling 3	117° 14.515' W	48° 47.253' N
Other Points		
Spot Fire	117° 13.613' W	48° 46.437' N
Helibase	117° 17.085' W	48° 50.472' N
ICP	117° 22.292' W	48° 51.629' N

Noisy Creek Fire

WA-COF-001416

Pilot Map

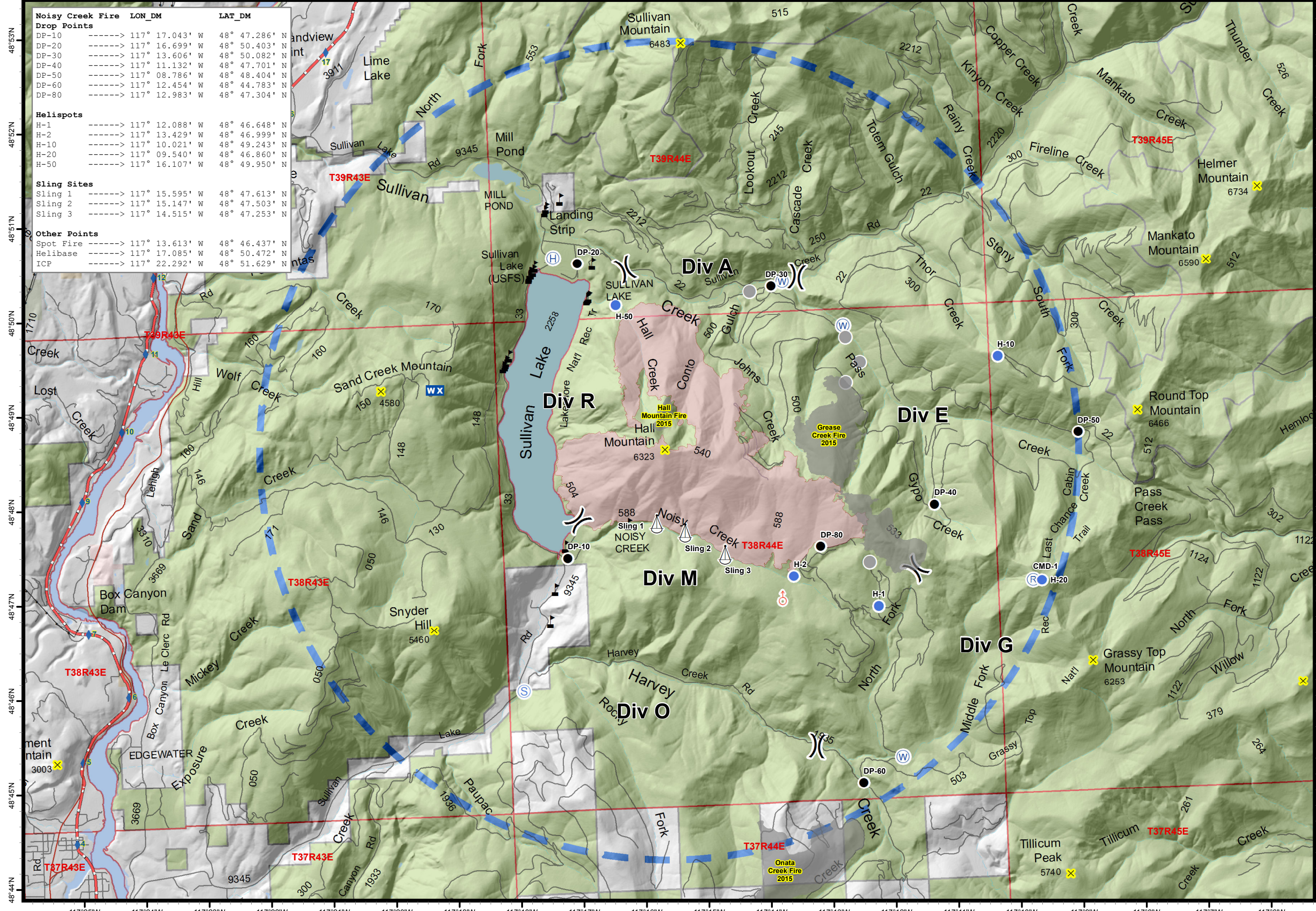
08/09/2017

Perimeter as of 08/08/2017 @ 0500

1
Miles
Magnetic Declination: +14.89° E



- Drop Point
- Ⓜ Helibase
- Helispot
- ▣ Incident Command Post
- WX Mobile Weather Unit
- Ⓜ Repeater
- Ⓜ Sling Site
- Ⓜ Spot Fire
- Ⓜ Staging Area
- Ⓜ Water Source
- Ⓜ Value at Risk
- Other
- Ⓜ Division Break
- ✘ Summits
- ◆ Milepost Markers (DOT)
- Transmission Line
- Railroads
- Highway
- Roads (DNR)
- DNR Lands
- City or Municipality
- US Bureau of Land Management
- US Forest Service
- WA Dept of Fish and Wildlife
- Temporary Flight Restriction Area



117°25'W 117°24'W 117°23'W 117°22'W 117°21'W 117°20'W 117°19'W 117°18'W 117°17'W 117°16'W 117°15'W 117°14'W 117°13'W 117°12'W 117°11'W 117°10'W 117°9'W 117°8'W 117°7'W 117°6'W