

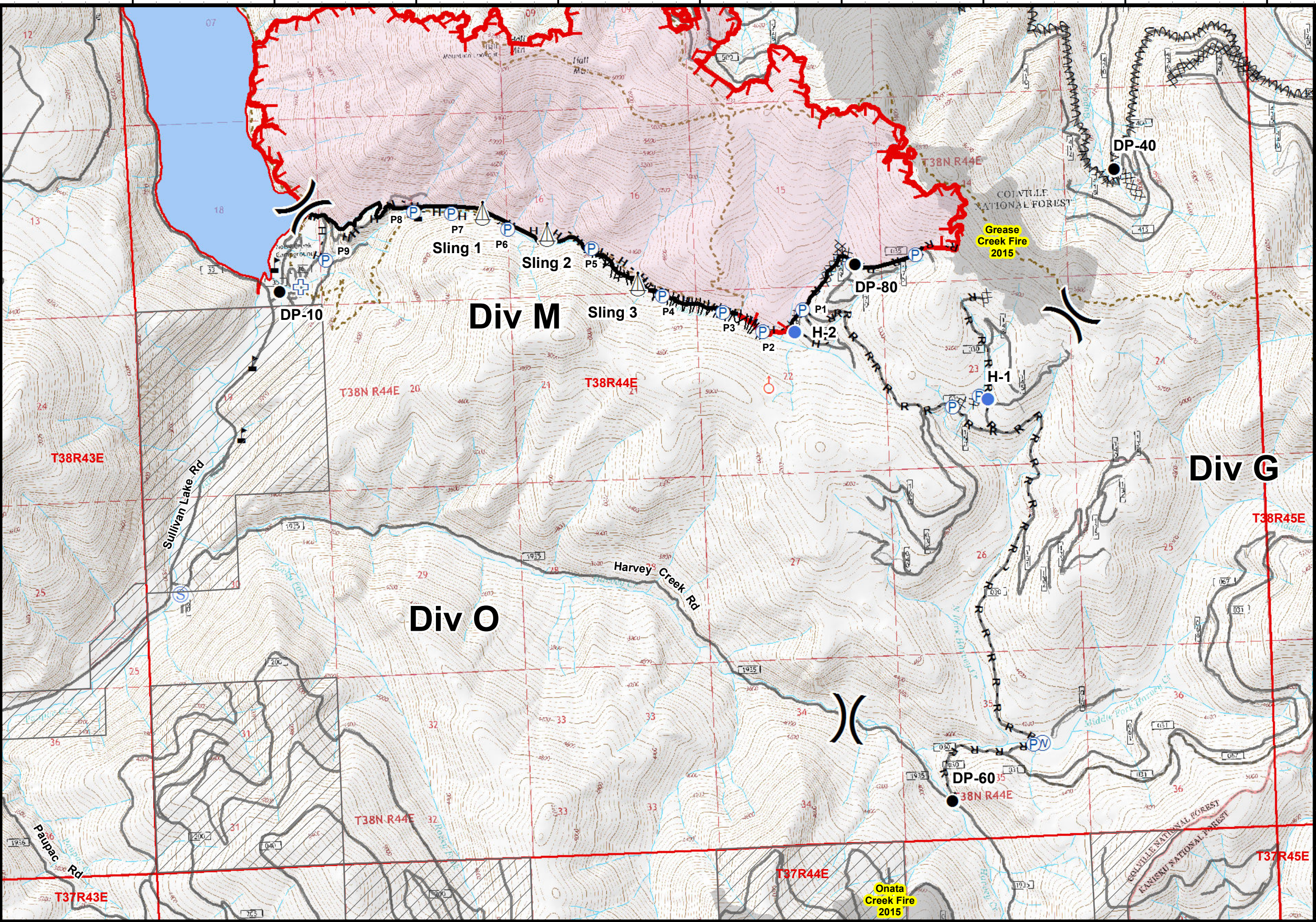
117°18'W 117°17'W 117°16'W 117°15'W 117°14'W 117°13'W 117°12'W 117°11'W 117°10'W

48°48'N

48°47'N

48°46'N

48°45'N



117°19'W 117°18'W 117°17'W 117°16'W 117°15'W 117°14'W 117°13'W 117°12'W 117°11'W 117°10'W

Noisy Creek Fire

WA-COF-001416

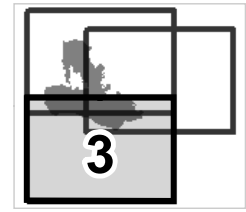
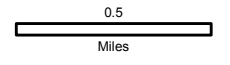
IAP Map

08/10/2017

Day Shift

3,680 acres (total)

Perimeter as of 08/09/2017 @ 1400



Page 3 of 3

Magnetic Declination: +14.89° E



- Drop Point
- ⊕ First Aid Station
- Helispot
- Ⓟ Pump
- Ⓢ Sling Site
- ♂ Spot Fire
- Ⓢ Staging Area
- Ⓜ Water Source
- ⚠ Value at Risk
-)) Division Break

- Uncontrolled Fire Edge
- Completed Line
- ⊗ Completed Dozer Line
- H - Completed Hand Line
- R - Road as Completed Line
- M Line Break Completed
- W Fire Break Planned or Incomplete
- ▭ Private Land
- ▭ Wildfire Daily Fire Perimeter
- ▭ Historic Fires