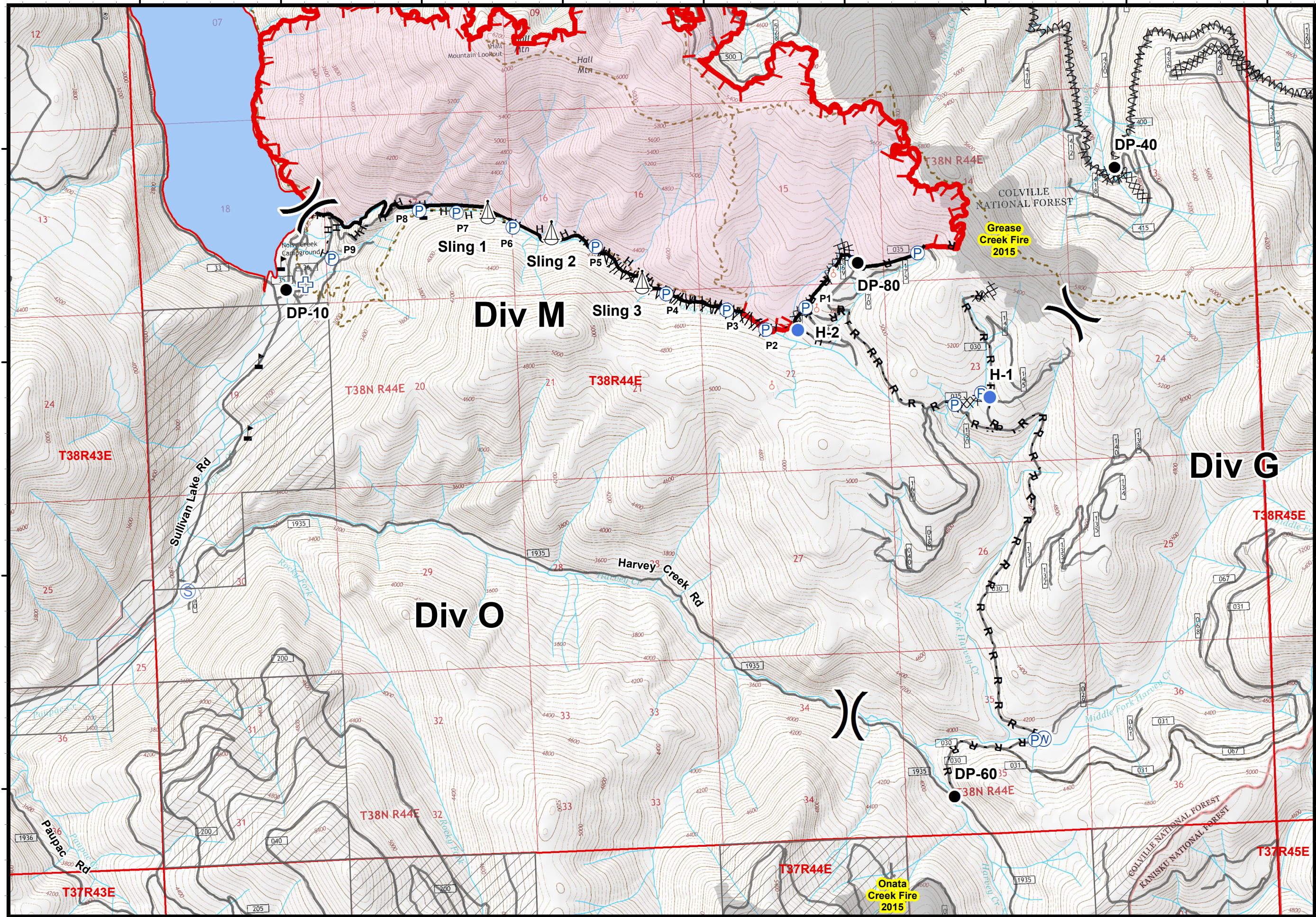


117°18'W 117°17'W 117°16'W 117°15'W 117°14'W 117°13'W 117°12'W 117°11'W 117°10'W

48°48'N 48°47'N 48°46'N 48°45'N



Noisy Creek Fire

WA-COF-001416

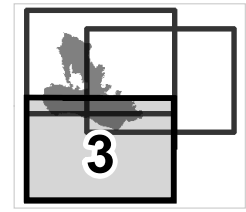
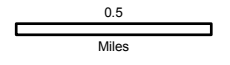
IAP Map

08/11/2017

Day Shift

3,870 acres (total)

Perimeter as of 08/10/2017 @ 0500



Page 3 of 3

Magnetic Declination: +14.89° E



- Drop Point
- ⊕ First Aid Station
- Helispot
- Ⓟ Pump
- ⚓ Sling Site
- ⊙ Spot Fire
- Ⓢ Staging Area
- Ⓜ Water Source
- ⚠ Value at Risk
-) (Division Break
- ▬ Uncontrolled Fire Edge
- ▬ Completed Line
- ▬ Completed Dozer Line
- H - Completed Hand Line
- R - Road as Completed Line
- ▬ Line Break Completed
- ▬ Fire Break Planned or Incomplete
- ▭ Private Land
- ▭ Historic Fires

117°19'W 117°18'W 117°17'W 117°16'W 117°15'W 117°14'W 117°13'W 117°12'W 117°11'W 117°10'W