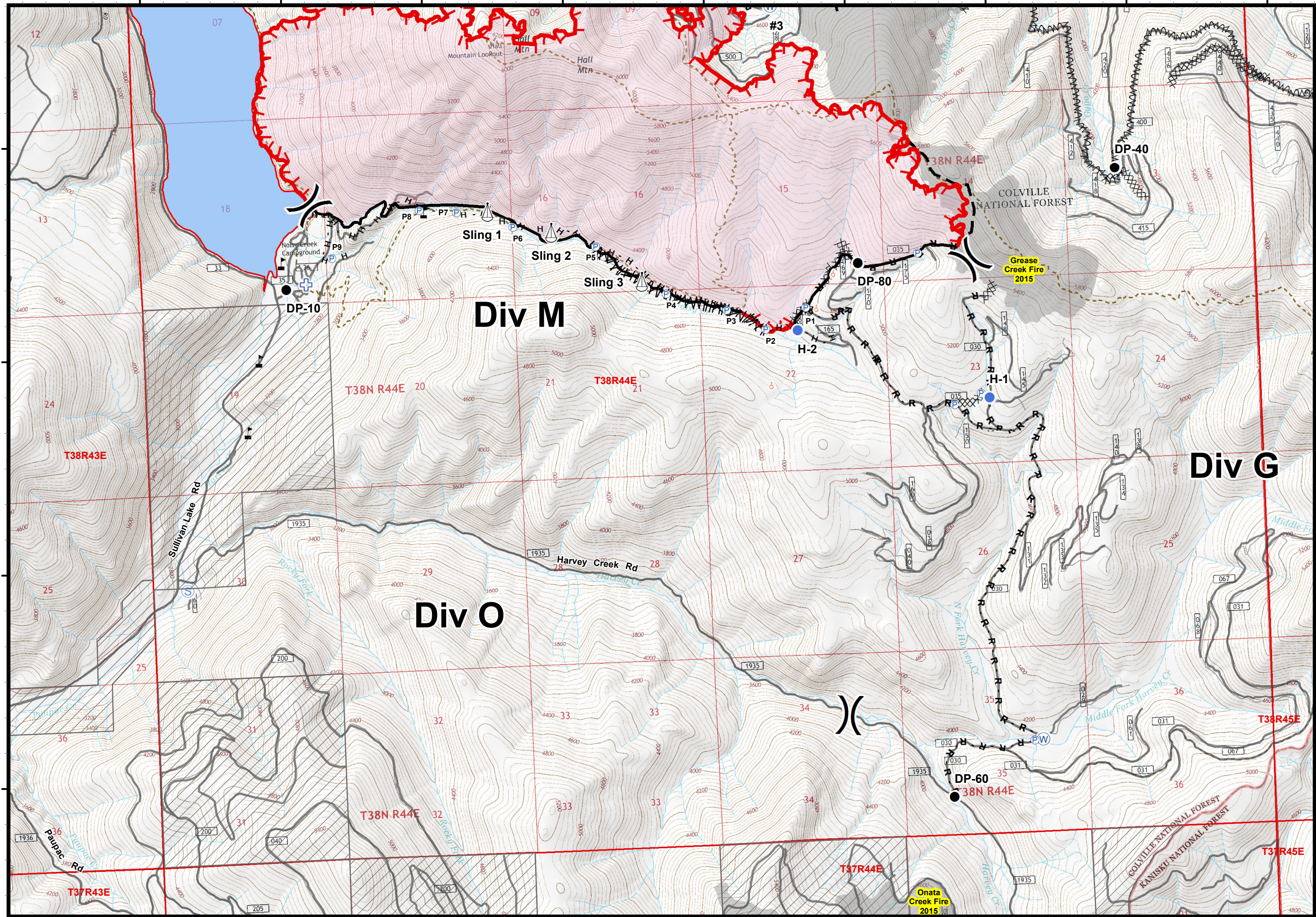


117°18'W 117°17'W 117°16'W 117°15'W 117°14'W 117°13'W 117°12'W 117°11'W 117°10'W

48°48'N  
48°47'N  
48°46'N  
48°45'N



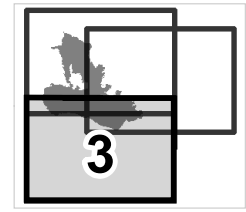
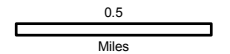
### Noisy Creek Fire

WA-COF-001416

#### IAP Map

08/12/2017  
Day Shift

3,870 acres (total)  
Perimeter as of 08/10/2017 @ 0500



Page 3 of 3

Magnetic Declination: +14.89° E



- Drop Point
- ⊕ First Aid Station
- Helispot
- P Pump
- ⚓ Sling Site
- ♂ Spot Fire
- S Staging Area
- W Water Source
- ⚠ Value at Risk
- ) ( Division Break

- Uncontrolled Fire Edge
- Completed Line
- ⊗ Completed Dozer Line
- H - Completed Hand Line
- R - Road as Completed Line
- Line Break Completed
- Fire Break Planned or Incomplete
- Planned Fire Line
- ▭ Private Land
- ▭ Historic Fires

117°19'W 117°18'W 117°17'W 117°16'W 117°15'W 117°14'W 117°13'W 117°12'W 117°11'W 117°10'W