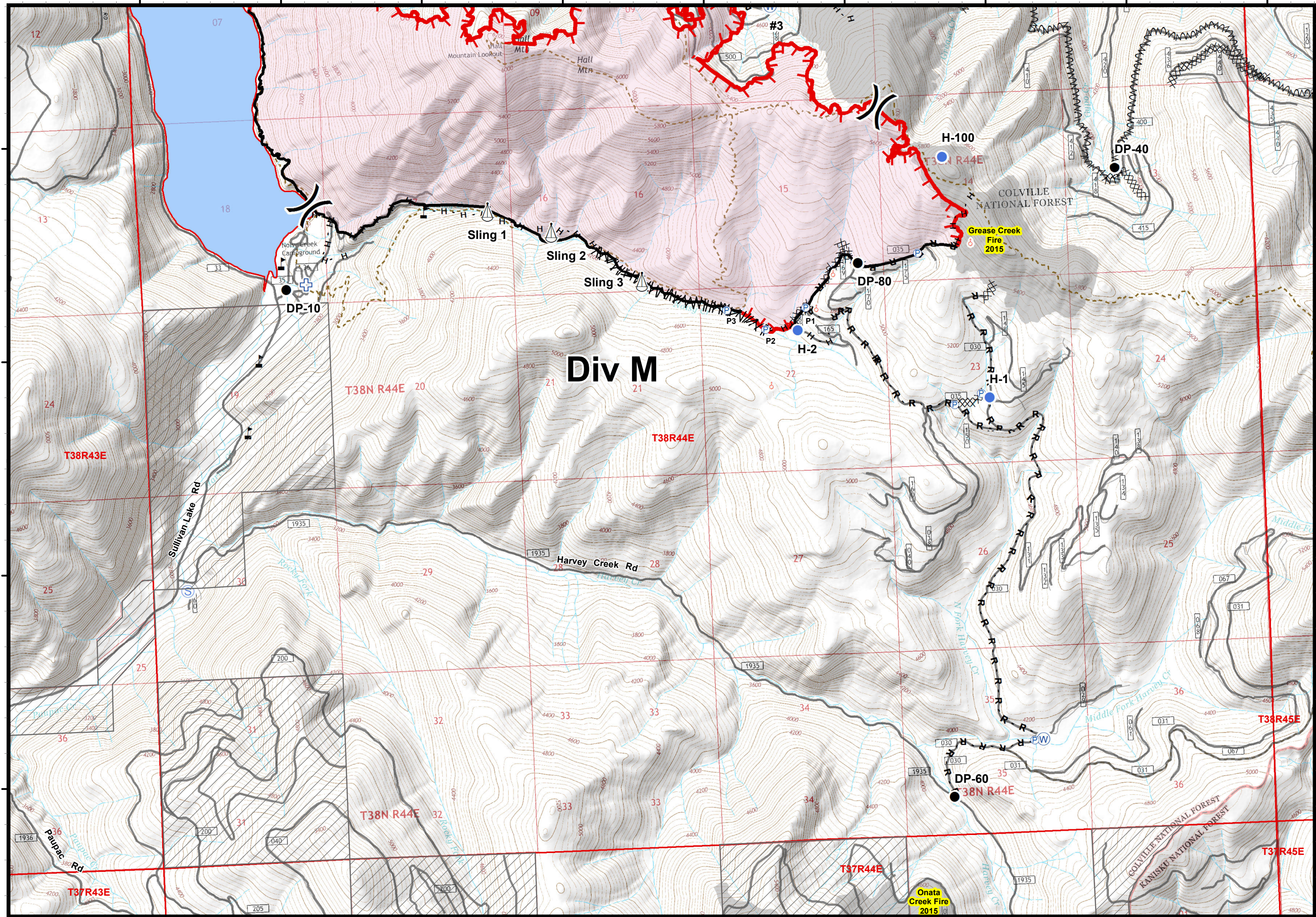


117°18'W 117°17'W 117°16'W 117°15'W 117°14'W 117°13'W 117°12'W 117°11'W 117°10'W

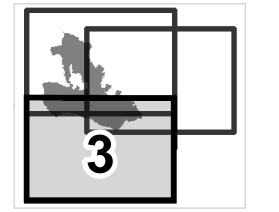
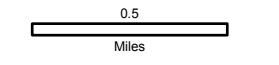
48°48'N  
48°47'N  
48°46'N  
48°45'N



### Noisy Creek Fire

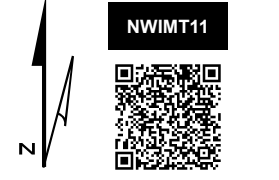
WA-COF-001416

**IAP Map**  
08/16/2017 - 08/20/2017  
Day Shift  
**4,000 acres (total)**  
Perimeter as of 08/12/2017 @ 1400



Page 3 of 3

Magnetic Declination: +14.89° E



- Drop Point
- ⊕ First Aid Station
- Helispot
- P Pump
- ⚓ Sling Site
- ⊕ Spot Fire
- ⊕ Staging Area
- ⊕ Water Source
- ⚠ Value at Risk
- ) Division Break
- Uncontrolled Fire Edge
- Completed Line
- XXX Completed Dozer Line
- H - Completed Hand Line
- R - Road as Completed Line
- M Line Break Completed
- ~ Fire Break Planned or Incomplete
- ▭ Private Land
- ▭ Historic Fires

117°19'W 117°18'W 117°17'W 117°16'W 117°15'W 117°14'W 117°13'W 117°12'W 117°11'W 117°10'W