

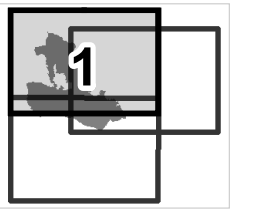
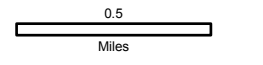
Noisy Creek Fire

WA-COF-001416

IAP Map

08/16/2017 - 08/20/2017
Day Shift

4,000 acres (total)
Perimeter as of 08/12/2017 @ 1400

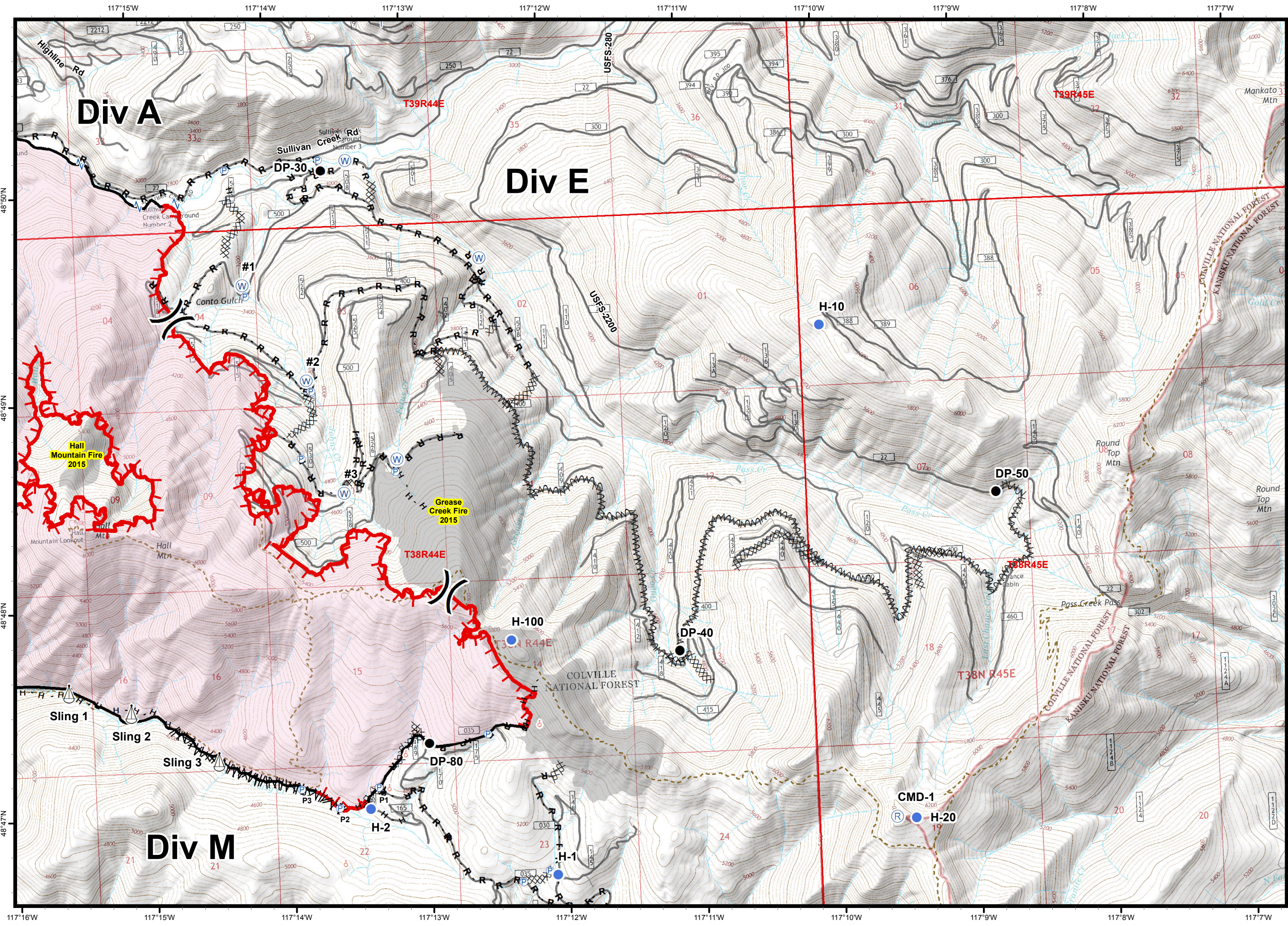


Page 1 of 3

Magnetic Declination: +14.89° E



- Drop Point
- ⊕ First Aid Station
- ⊕ Helibase
- Helispot
- ⊕ Lookout
- ⊕ Pump
- ⊕ Sling Site
- ⊕ Spot Fire
- ⊕ Water Source
- ⊕ Value at Risk
- ⊕ Division Break
- ⊕ Safe Water Crossing
- ⊕ Uncontrolled Fire Edge
- ⊕ Completed Line
- ⊕ Completed Dozer Line
- H - Completed Hand Line
- R - Road as Completed Line
- ⊕ Line Break Completed
- ⊕ Fire Break Planned or Incomplete
- ⊕ Private Land
- ⊕ Historic Fires



Noisy Creek Fire

WA-COF-001416

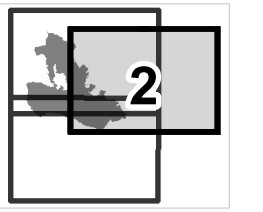
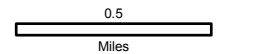
IAP Map

08/16/2017 - 08/20/2017

Day Shift

4,000 acres (total)

Perimeter as of 08/12/2017 @ 1400



Page 2 of 3

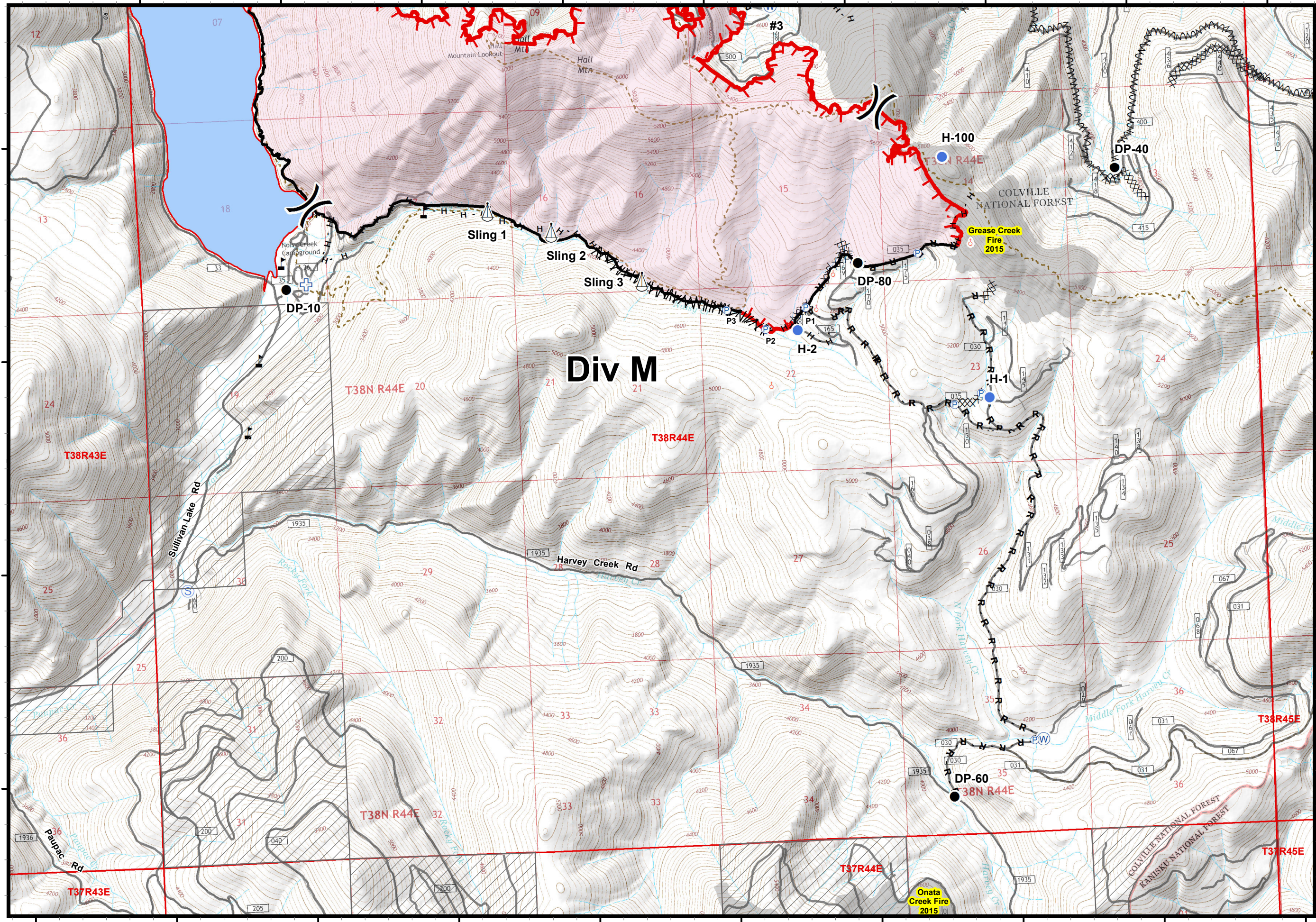
Magnetic Declination: +14.89° E



- Drop Point
- Helispot
- Lookout
- Pump
- Repeater
- Sling Site
- Spot Fire
- Water Source
- Division Break
- Safe Water Crossing
- Uncontrolled Fire Edge
- Completed Line
- Completed Dozer Line
- H - Completed Hand Line
- R - Road as Completed Line
- Line Break Completed
- Fire Break Planned or Incomplete
- Historic Fires

117°18'W 117°17'W 117°16'W 117°15'W 117°14'W 117°13'W 117°12'W 117°11'W 117°10'W

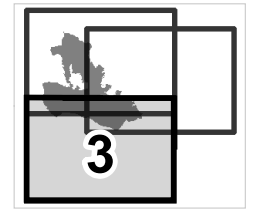
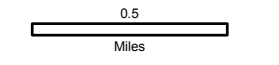
48°48'N
48°47'N
48°46'N
48°45'N



Noisy Creek Fire

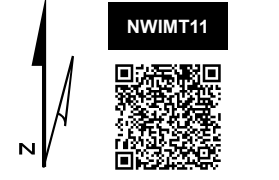
WA-COF-001416

IAP Map
08/16/2017 - 08/20/2017
Day Shift
4,000 acres (total)
Perimeter as of 08/12/2017 @ 1400



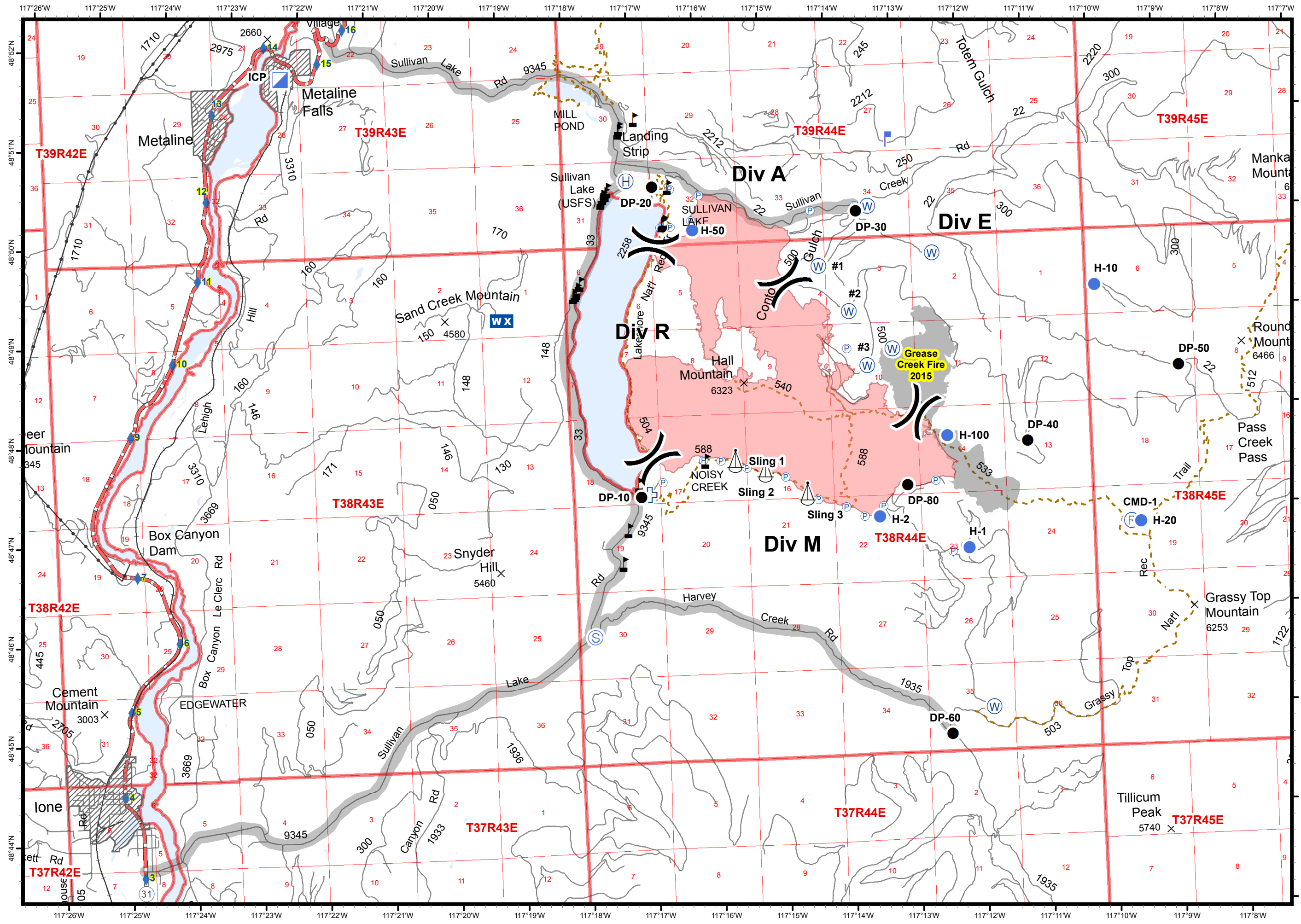
Page 3 of 3

Magnetic Declination: +14.89° E



- Drop Point
- First Aid Station
- Helispot
- Pump
- Sling Site
- Spot Fire
- Staging Area
- Water Source
- Value at Risk
- Uncontrolled Fire Edge
- Completed Line
- Completed Dozer Line
- Completed Hand Line
- Road as Completed Line
- Line Break Completed
- Fire Break Planned or Incomplete
- Private Land
- Historic Fires

117°19'W 117°18'W 117°17'W 117°16'W 117°15'W 117°14'W 117°13'W 117°12'W 117°11'W 117°10'W

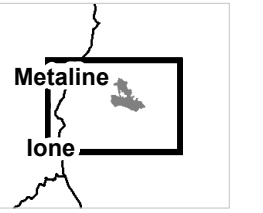
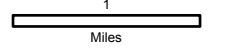


Noisy Creek Fire

WA-COF-001416


















Transportation Map
08/16/2017 - 08/20/2017

Perimeter as of 08/12/2017 @ 1400



Magnetic Declination: +14.89° E



-  Drop Point
-  First Aid Station
-  Helibase
-  Helispot
-  Incident Command Post
-  Lookout
-  Mobile Weather Unit
-  Pump
-  Repeater
-  Sling Site
-  Staging Area
-  Water Source
-  Value at Risk
-  Division Break
-  Roads
-  Trails
-  Routes to Fire