

121°25'W

121°20'W

121°15'W

121°10'W

47°0'N

47°0'N

46°55'N

46°55'N

46°55'N

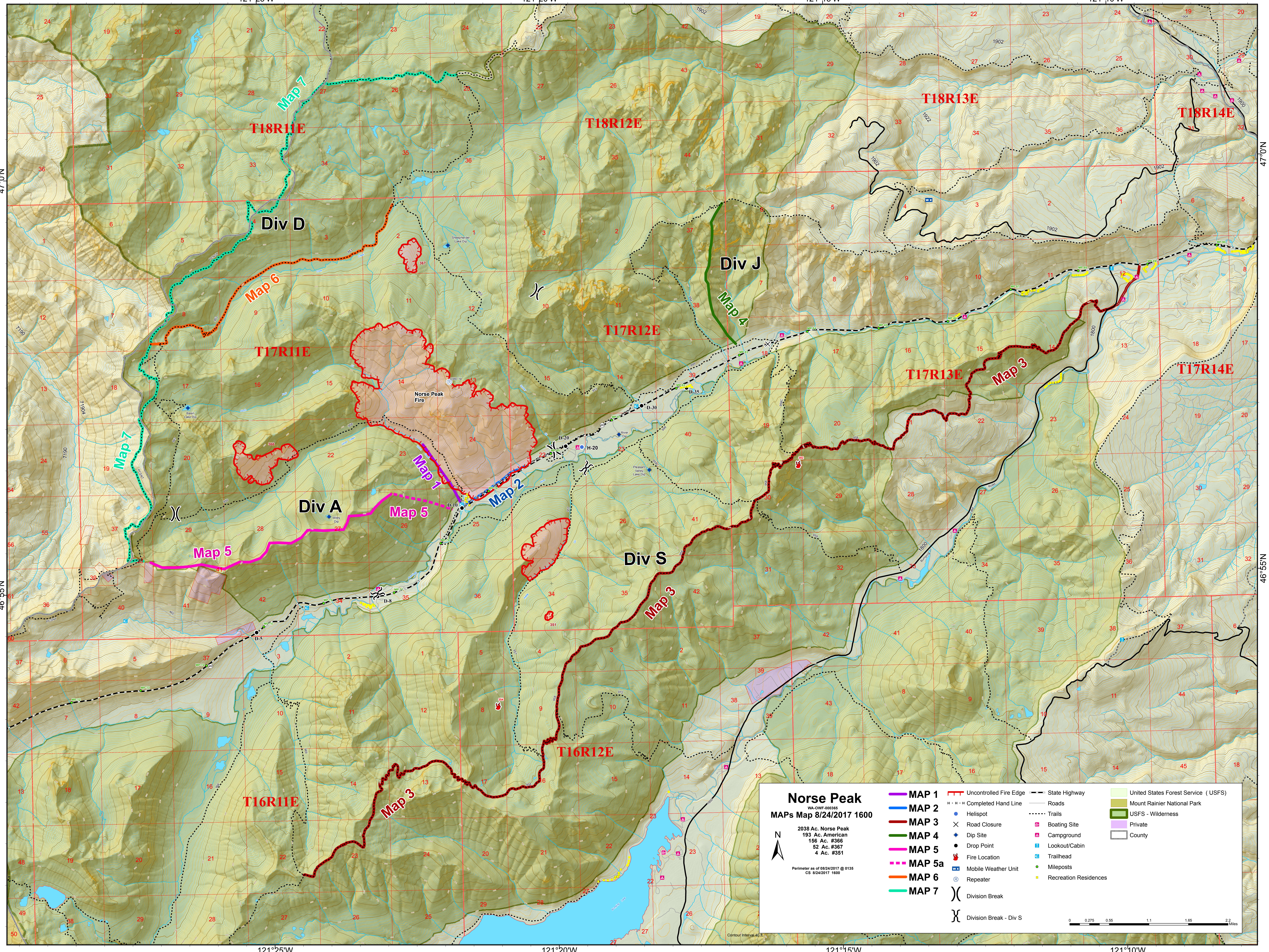
46°55'N

121°25'W

121°20'W

121°15'W

121°10'W



Norse Peak
 WA-OWF-000365
MAPs Map 8/24/2017 1600
 2038 Ac. Norse Peak
 193 Ac. American
 156 Ac. #366
 52 Ac. #367
 4 Ac. #351
 Perimeter as of 08/24/2017 @ 0135
 CS 8/24/2017 1600

- | | | | |
|---------------|------------------------|-----------------------|-------------------------------------|
| MAP 1 | Uncontrolled Fire Edge | State Highway | United States Forest Service (USFS) |
| MAP 2 | Completed Hand Line | Roads | Mount Rainier National Park |
| MAP 3 | Helispot | Trails | USFS - Wilderness |
| MAP 4 | Road Closure | Boating Site | Private |
| MAP 5 | Dip Site | Campground | County |
| MAP 5a | Drop Point | Lookout/Cabin | |
| MAP 6 | Fire Location | Trailhead | |
| MAP 7 | Mobile Weather Unit | Mileposts | |
| | Repeater | Recreation Residences | |
| | Division Break | | |
| | Division Break - Div S | | |

