

121°25'W

121°20'W

121°15'W

121°10'W

47°0'N

47°0'N

46°55'N

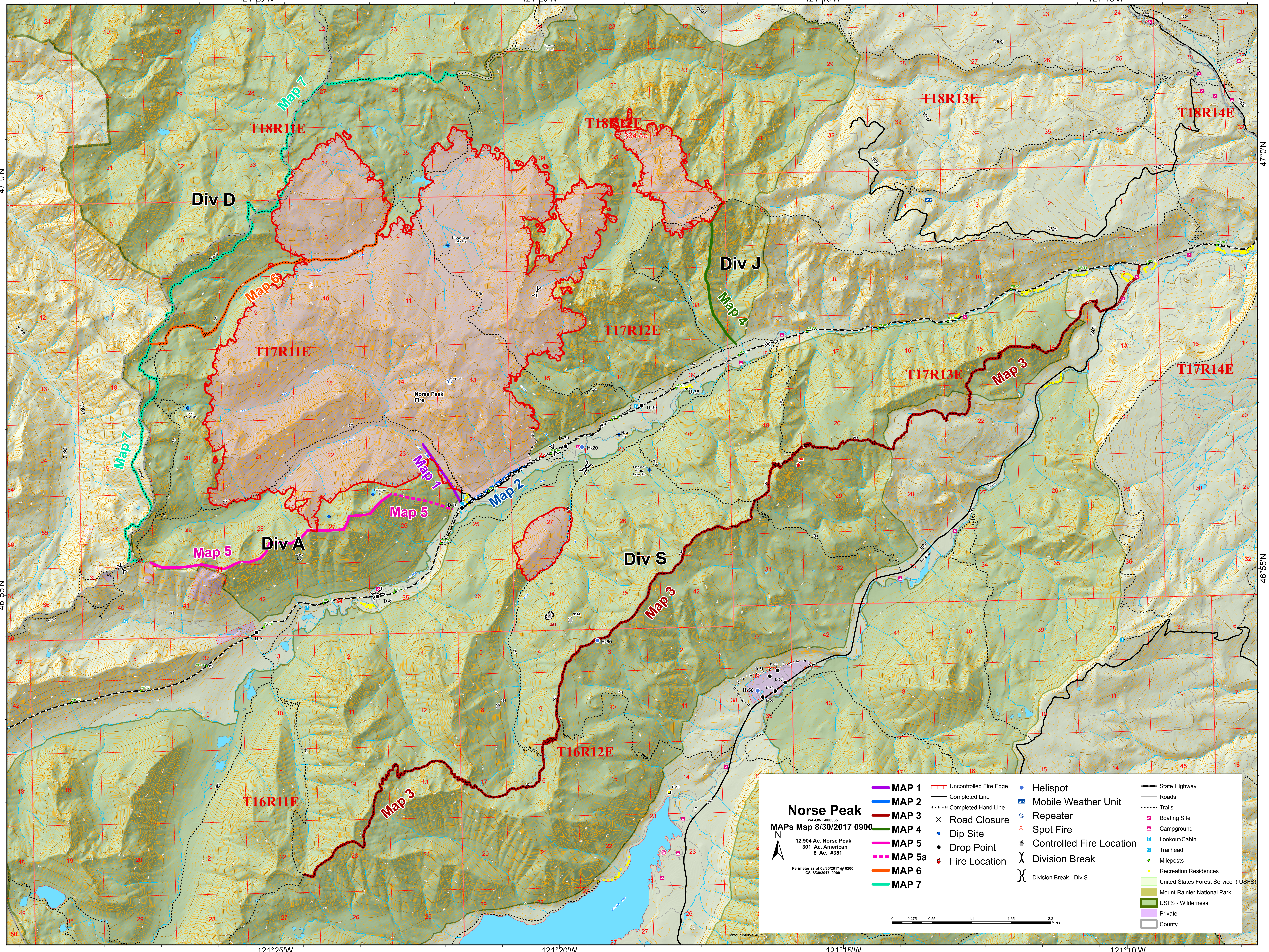
46°55'N

121°25'W

121°20'W

121°15'W

121°10'W



Norse Peak
 WA-OWF-000365
 MAPs Map 8/30/2017 0900
 12,904 Ac. Norse Peak
 301 Ac. American Peak
 5 Ac. #351
 Perimeter as of 8/30/2017 @ 0200
 CS 8/30/2017 0900

MAP 1	Uncontrolled Fire Edge	Helispot	State Highway
MAP 2	Completed Line	Mobile Weather Unit	Roads
MAP 3	Completed Hand Line	Repeater	Trails
MAP 4	Road Closure	Spot Fire	Boating Site
MAP 5	Dip Site	Drop Point	Lookout/Cabin
MAP 5a	Fire Location	Division Break	Mileposts
MAP 6	Division Break - Div S	Division Break - Div S	Recreation Residences
MAP 7			United States Forest Service (USFS)
			Mount Rainier National Park
			USFS - Wilderness
			Private
			County

0 0.275 0.55 1.1 1.65 2.2 Miles