

Norse Peak

WA-OWF-000365

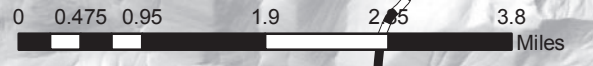
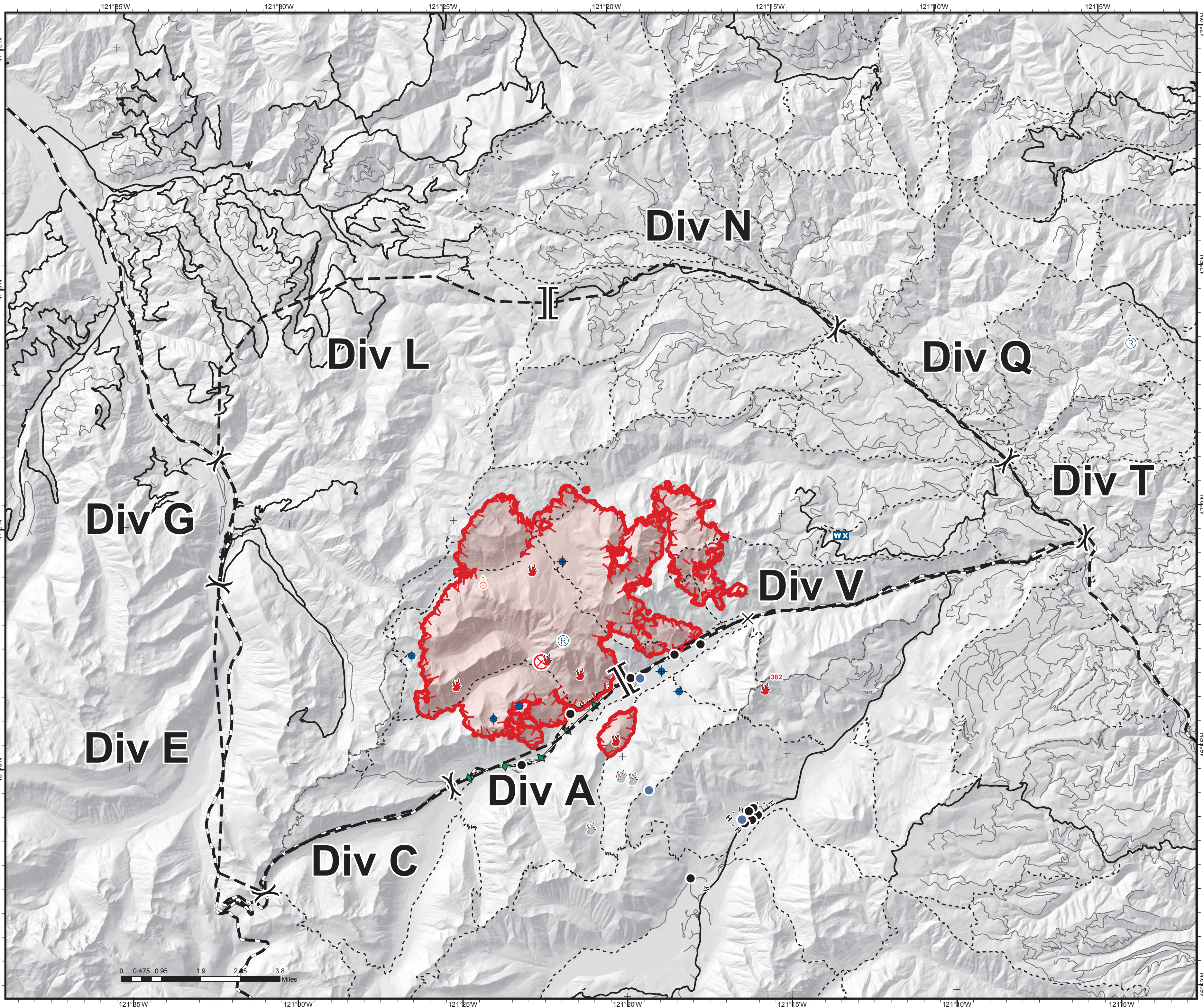
Division Map 9/2/2017 0700

16,165 Ac. Norse Peak
336 Ac. American

Perimeter as of 09/02/2017 @ 0015
Cob 9/02/2017 0600



- Uncontrolled Fire Edge
- Completed Line
- Completed Hand Line
- Completed Plow Line
- Planned Fire Line
- Road Closure
- Dip Site
- Drop Point
- Fire Location
- Fire Origin
- Helispot
- Mobile Weather Unit
- Repeater
- Spot Fire
- Controlled Fire Location
- Division Break
- Branch Break
- State Highway
- Main Roads
- Roads
- Trails



Contour Interval 40 ft.