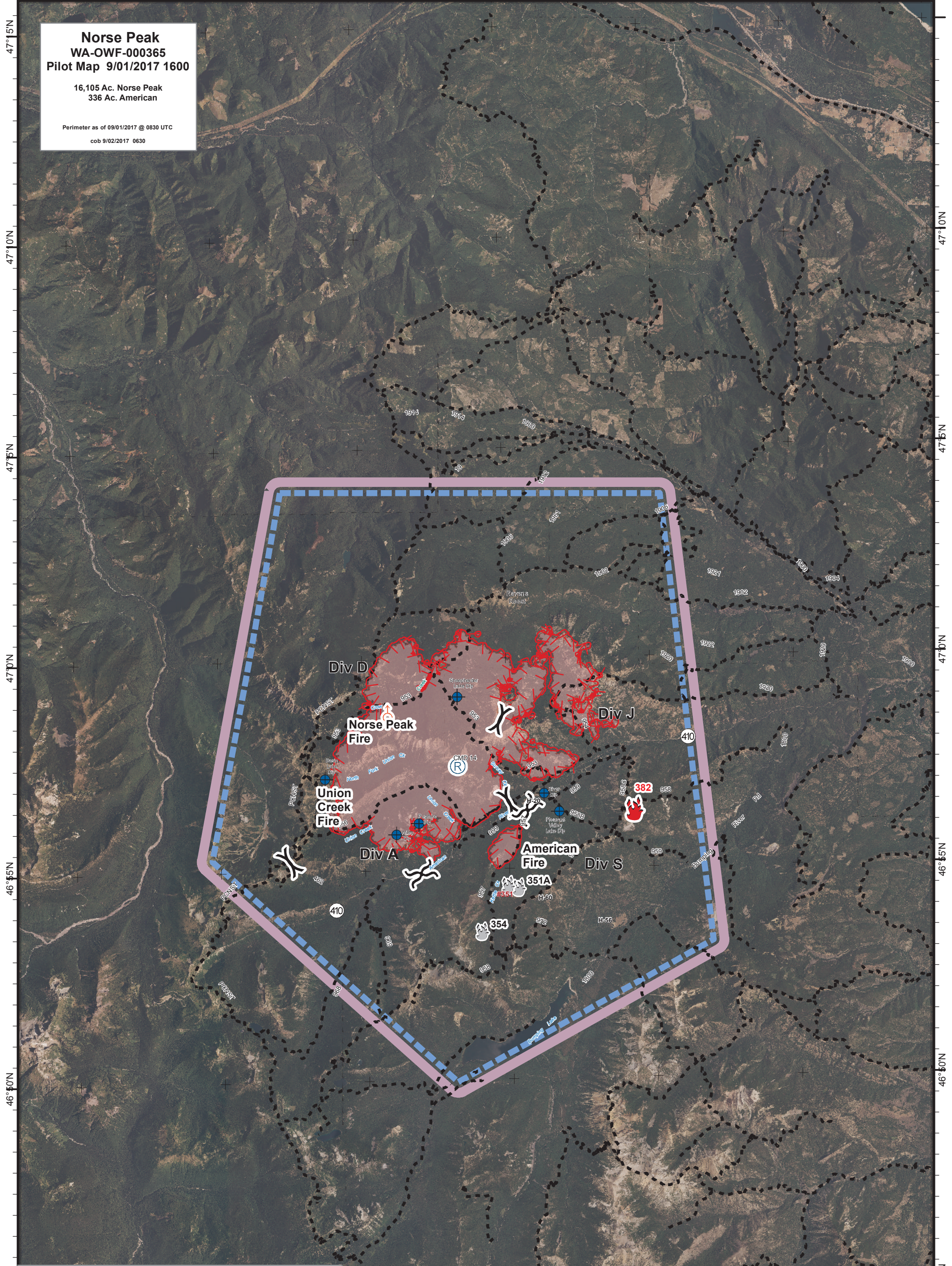


121°35'W 121°30'W 121°25'W 121°20'W 121°15'W 121°10'W 121°5'W

**Norse Peak**  
**WA-OWF-000365**  
**Pilot Map 9/01/2017 1600**

16,105 Ac. Norse Peak  
 336 Ac. American

Perimeter as of 09/01/2017 @ 0830 UTC  
 cob 9/02/2017 0630



Label	Latitude	Longitude	Type
Jefferson Helibase	46° 54.731	121° 2.222	All
H-20	46° 56.648	121° 19.420	Type II or Type III
H-56	46° 53.660	121° 16.415	
H-60	46° 54.31	121° 19.22	
Ridgeline Repeater	47° 3.40	121° 4.24	
Basin Lake Dip	46° 57.219	121° 26.356	
Pleasant Valley Lake Dip	46° 56.352	121° 18.258	
Pugmire Dip	46° 56.13	121° 23.12	
River Dip	46° 56.79	121° 18.76	
Sheepherder Lake Dip	46° 59.118	121° 21.706	
Wiley Dip	46° 55.87	121° 23.90	

121°35'W 121°30'W 121°25'W 121°20'W 121°15'W 121°10'W