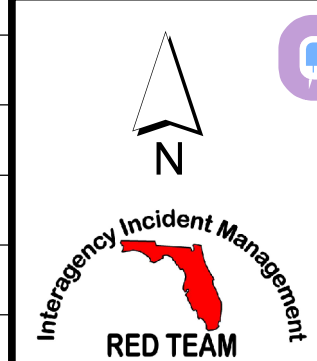
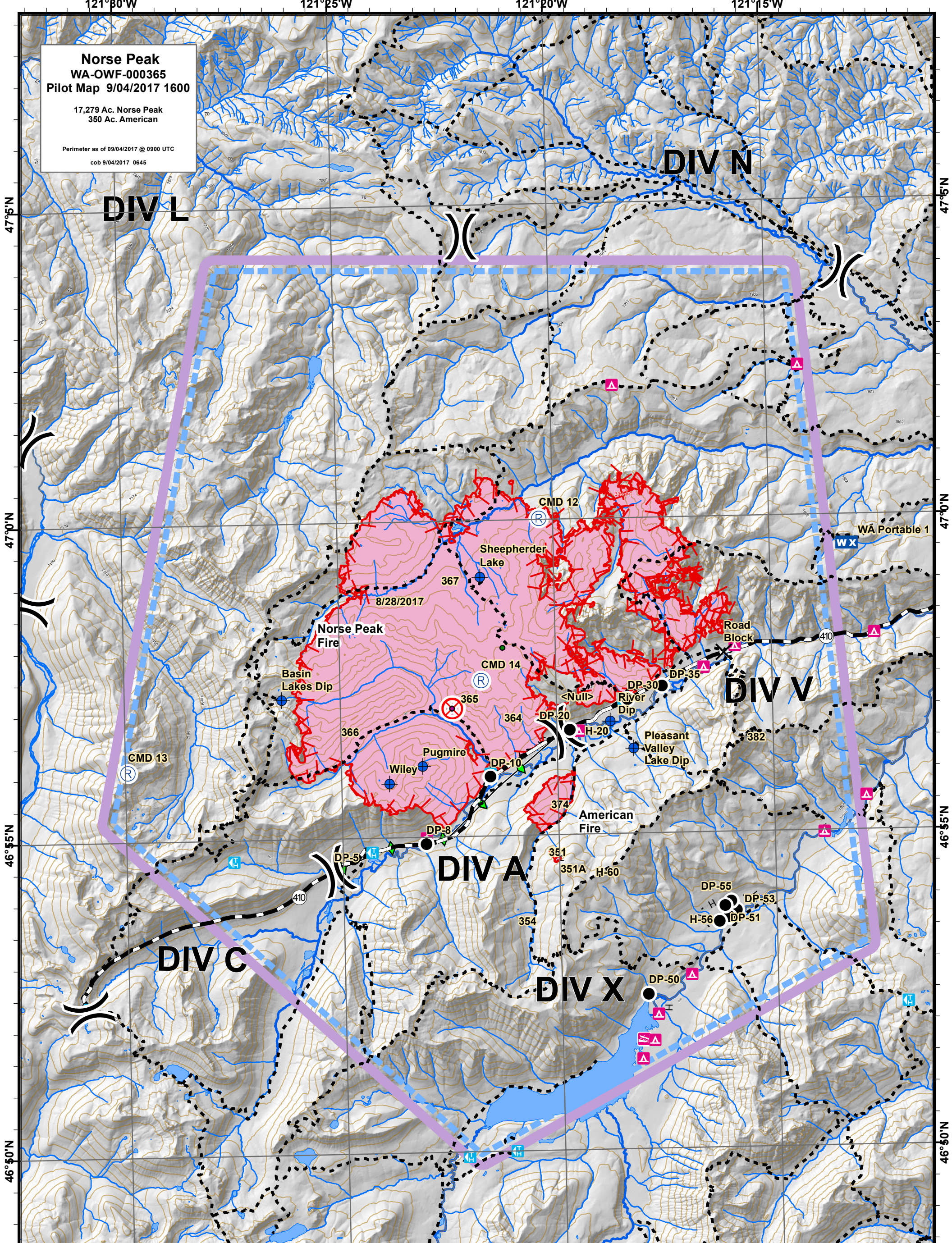


**Norse Peak**  
 WA-OWF-000365  
 Pilot Map 9/04/2017 1600

17,279 Ac. Norse Peak  
 350 Ac. American

Perimeter as of 09/04/2017 @ 0900 UTC  
 cob 9/04/2017 0645



- NORSE\_PEAK
- 9.2-9.8\_for\_FMO\_Scott\_and\_FBAN
- Uncontrolled Fire Edge
- Completed Line
- Completed Hand Line
- Completed Plow Line
- Wildfire Daily Fire Perimeter
- Closure
- Dip Site
- Drop Point
- Fire Origin
- Mobile Weather Unit
- Repeater
- Division Break - Div S

Label	Latitude	Longitude	Type
Jefferson Helibase	46° 54.731	121° 2.222	All
H-20	46° 56.648	121° 19.420	Type II or Type III
H-56	46° 53.660	121° 16.415	
H-60	46° 54.31	121° 19.22	
Ridgeline Repeater	47° 3.40	121° 4.24	
Basin Lake Dip	46° 57.219	121° 26.356	
Pleasant Valley Lake Dip	46° 56.352	121° 18.258	
Pugmire Dip	46° 56.13	121° 23.12	
River Dip	46° 56.79	121° 18.76	
Shepherd Lake Dip	46° 59.118	121° 21.706	
Wiley Dip	46° 55.87	121° 23.90	

121°30'W      121°25'W      121°20'W      121°15'W

47°5'N      47°0'N      46°55'N      46°50'N