



Check Pt 8

Check Pt 6

Check Pt 5

Check Pt 4

Check Pt 2

Check Pt 7

Check Pt 1

Check Pt 3

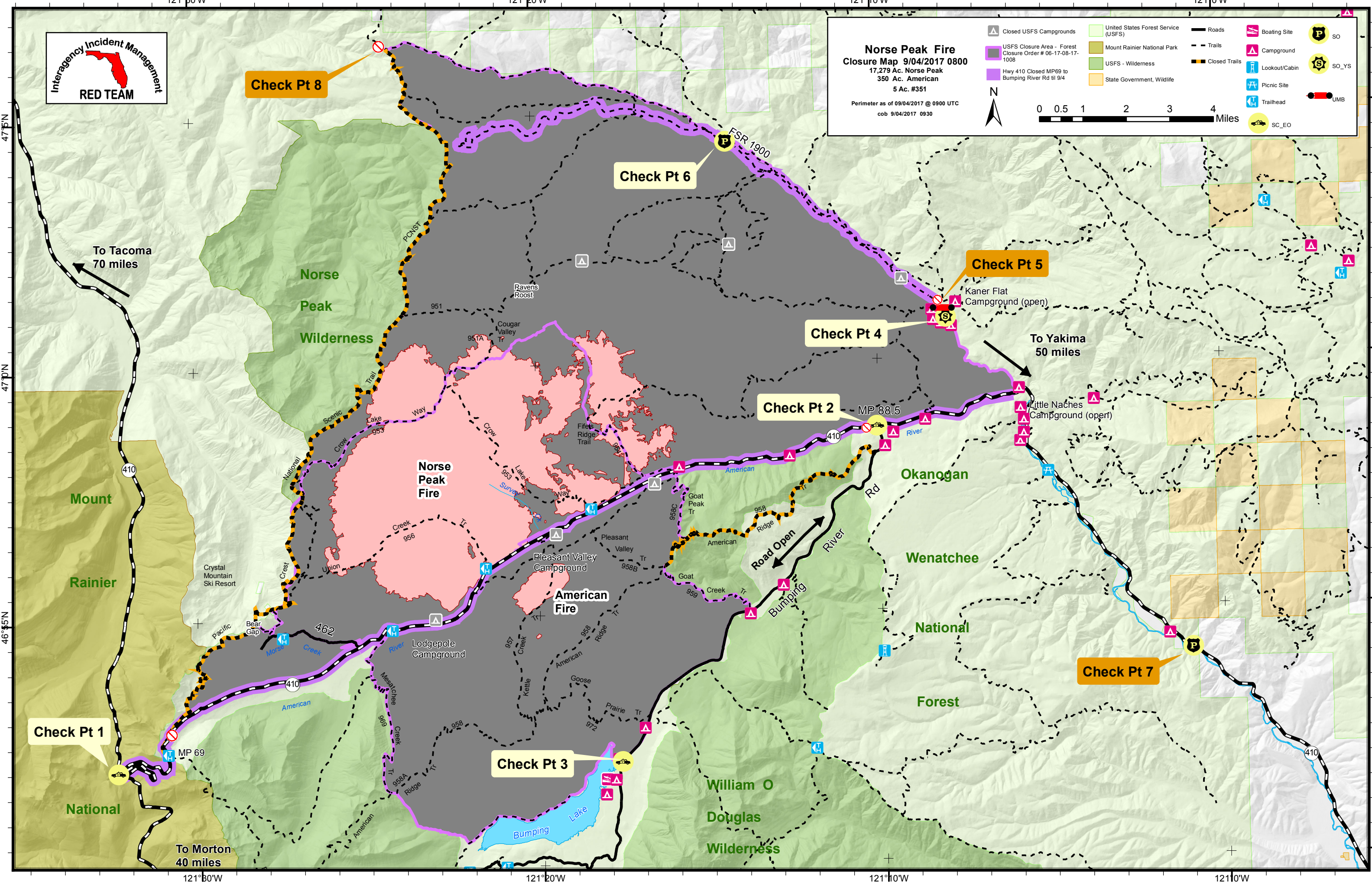
### Norse Peak Fire Closure Map 9/04/2017 0800

17,279 Ac. Norse Peak  
350 Ac. American  
5 Ac. #351

Perimeter as of 09/04/2017 @ 0900 UTC  
cob 9/04/2017 0930

	Closed USFS Campgrounds		United States Forest Service (USFS)		Roads		Boating Site		SO
	USFS Closure Area - Forest Closure Order # 06-17-08-17-1008		Mount Rainier National Park		Trails		Campground		SO_YS
	Hwy 410 Closed MP69 to Bumping River Rd til 9/4		USFS - Wilderness		Closed Trails		Lookout/Cabin		UMB
			State Government, Wildlife				Picnic Site		SC_EO

0 0.5 1 2 3 4 Miles



To Tacoma  
70 miles

To Yakima  
50 miles

To Morton  
40 miles

Road Open