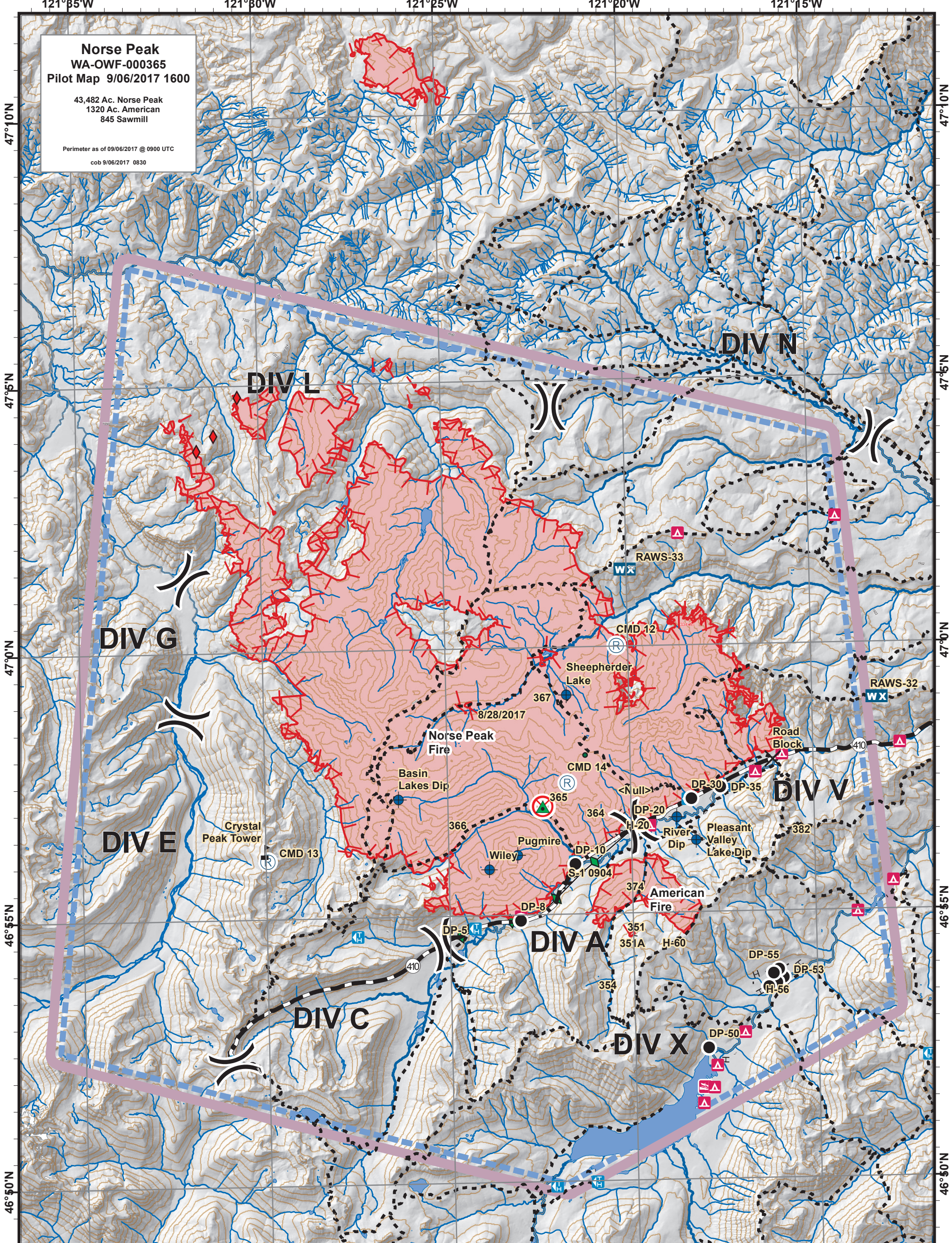


Norse Peak
WA-OWF-000365
Pilot Map 9/06/2017 1600

43,482 Ac. Norse Peak
 1320 Ac. American
 845 Sawmill

Perimeter as of 09/06/2017 @ 0900 UTC
 cob 9/06/2017 0830



Legend:

- SpotsNP_90517 (Red diamond)
- TFR (Blue square with white 'T')
- NORSE_PEAK (Green triangle)
- 9.2-9.8_for_FMO_Scott_and_FBAN (Black circle)
- Uncontrolled Fire Edge (Red line)
- Completed Line (Black line)
- Completed Hand Line (Blue line with 'H')
- Completed Plow Line (Green line)
- Wildfire Daily Fire Perimeter (Pink shaded area)
- Closure (Black 'X')
- Dip Site (Blue circle with 'D')
- Drop Point (Black circle)
- Fire Origin (Red circle with 'X')
- Mobile Weather Unit (Blue box with 'WX')
- Repeater (Blue circle with 'R')
- Value at Risk (Black triangle)
- Division Break - Div S (Black curved line)

Scale: 0 0.5 1 2 3 4 Miles

Label	Latitude	Longitude	Type
Jefferson Helibase	46° 54.731	121° 2.222	All
H-20	46° 56.648	121° 19.420	Type II or Type III
H-56	46° 53.660	121° 16.415	
H-60	46° 54.31	121° 19.22	
Ridgeline Repeater	47° 3.40	121° 4.24	
Basin Lake Dip	46° 57.219	121° 26.356	
Pleasant Valley Lake Dip	46° 56.352	121° 18.258	
Pugmire Dip	46° 56.13	121° 23.12	
River Dip	46° 56.79	121° 18.76	
Shepherd Lake Dip	46° 59.118	121° 21.706	
Wiley Dip	46° 55.87	121° 23.90	

SpotsNP_90517 (Red diamond)



121°35'W 121°30'W 121°25'W 121°20'W 121°15'W

47°10'N 47°5'N 47°0'N 46°55'N 46°50'N