

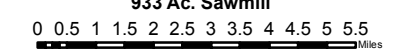
Norse Peak

WA-OWF-000365

Overview

Division Map 9/8/2017 0700

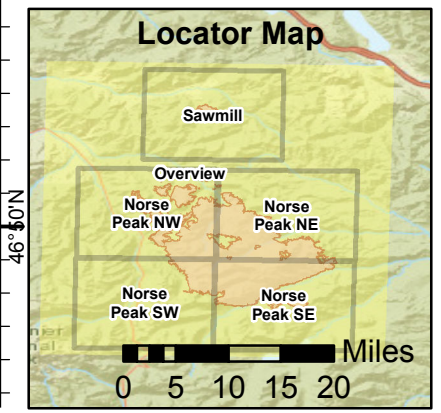
45,433 Ac. Norse Peak
1493 Ac. American
933 Ac. Sawmill

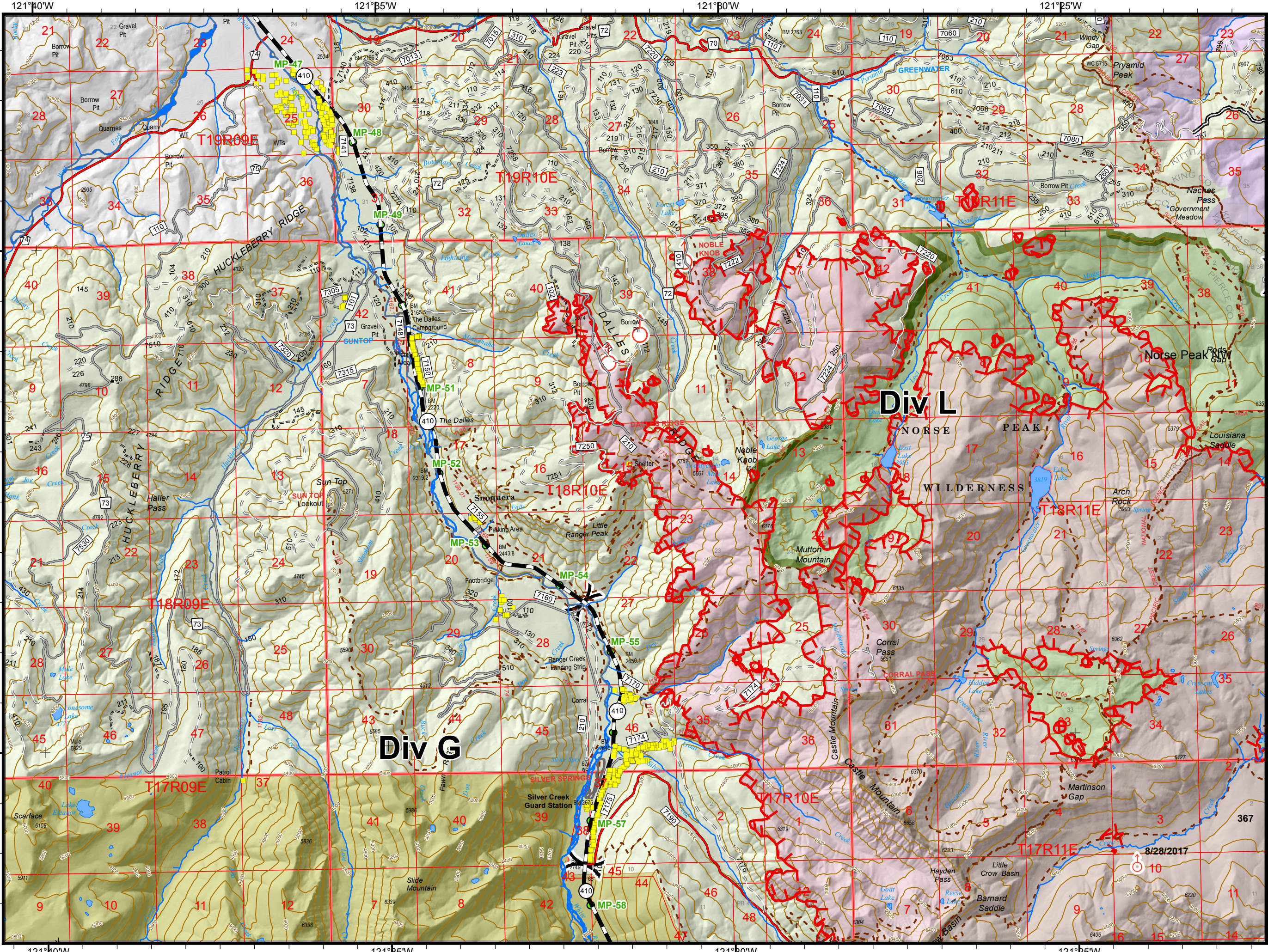


Perimeter as of 09/07/2017 @ 0015 PDT
cob 9/08/2017 0600



- | | |
|--|--|
| | |
| | |
| | |
| | |
| | |
| | |
| | |
| | |
-
- Mileposts
 - State Highway
 - 5 - High Degree Of User Comfort
 - 4 - Moderate Degree Of User Comfort
 - 3 - Suitable For Passenger Cars
 - 2 - High Clearance Vehicles
 - 1 - CLOSED
 - United States Forest Service (USFS)
 - Mount Rainier National Park
 - Federal Government, Unknown
 - USFS - Wilderness
 - State Government, Wildlife
 - Private
 - FSTopo_Building_Point





Norse Peak
WA-OWF-000365
Norse Peak NW
Division Map 9/8/2017 0700

45,433 Ac. Norse Peak
 1499 Ac. American
 933 Ac. Sawmill

0 0.5 1 1.5 Miles

Perimeter as of 09/07/2017 @ 0015 PDT
 cob 9/08/2017 0600



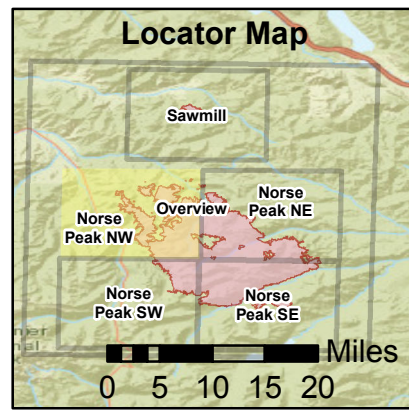
Fire Location

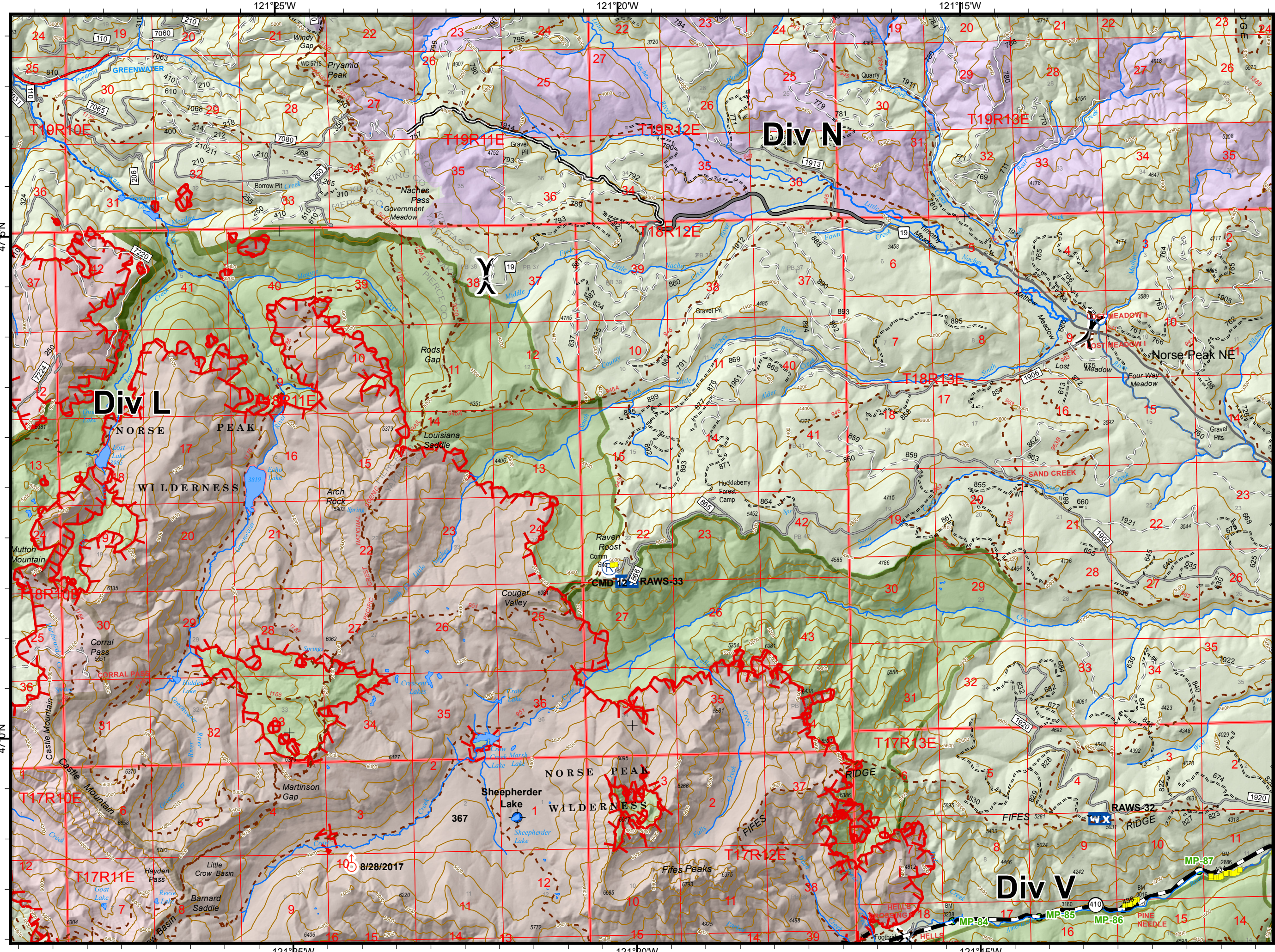
Division Break

Spot Fire

- Mileposts
- State Highway
- 5 - High Degree Of User Comfort
- 4 - Moderate Degree Of User Comfort
- 3 - Suitable For Passenger Cars
- 2 - High Clearance Vehicles
- 1 - CLOSED
- United States Forest Service (USFS)
- Mount Rainier National Park
- USFS - Wilderness
- Private
- FS Topo Building Point

Interagency Incident Management
RED TEAM





Norse Peak
 WA-OWF-000365
Norse Peak NE
 Division Map 9/8/2017 0700

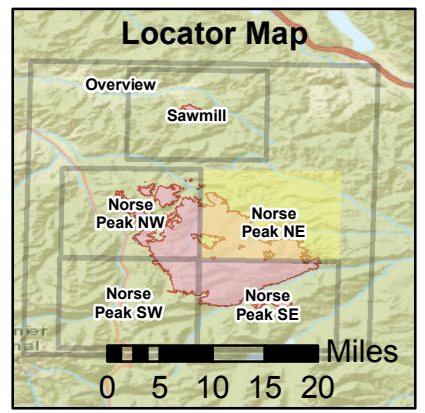
45,433 Ac. Norse Peak
 1499 Ac. American
 933 Ac. Sawmill

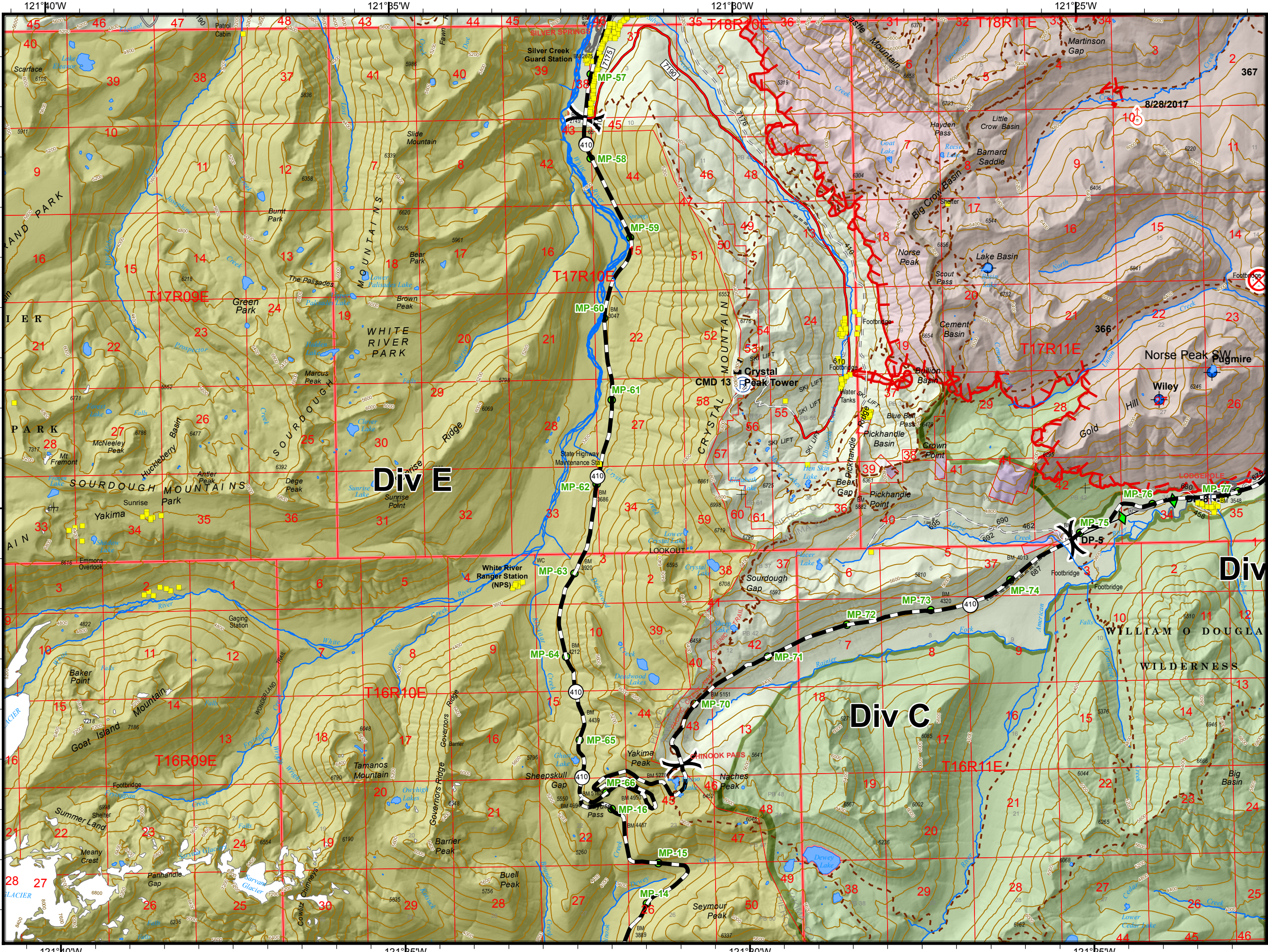
0 0.5 1 1.5 Miles

Perimeter as of 09/07/2017 @ 0015 PDT
 cob 9/08/2017 0600



- X Road Closure
- (R) Repeater
- Dip Site
- Spot Fire
- Fire Location
- WX Mobile Weather Unit
- Division Break
- Mileposts
- State Highway
- 5 - High Degree Of User Comfort
- 4 - Moderate Degree Of User Comfort
- 3 - Suitable For Passenger Cars
- 2 - High Clearance Vehicles
- 1 - CLOSED
- United States Forest Service (USFS)
- USFS - Wilderness
- Private
- FSTopo_Building_Point





Norse Peak
WA-OWF-000365
Norse Peak SW
Division Map 9/8/2017 0700

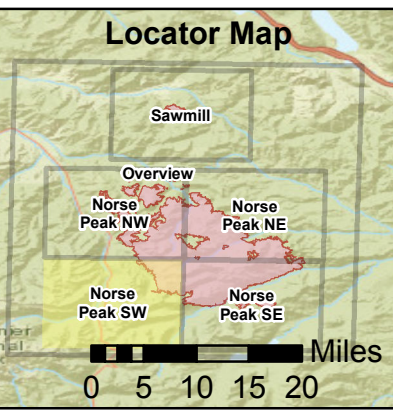
45,433 Ac. Norse Peak
 1499 Ac. American
 933 Ac. Sawmill

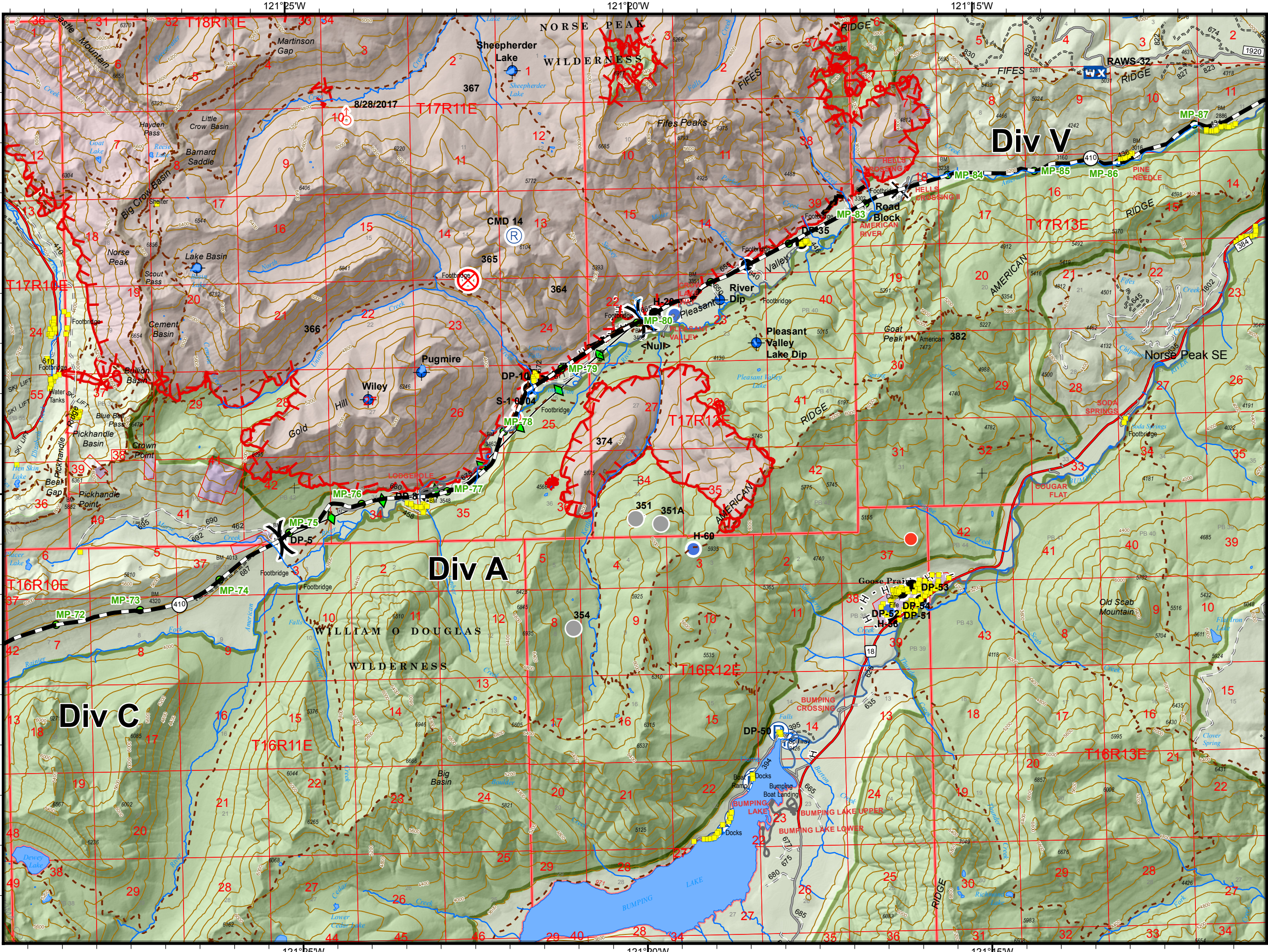
0 0.5 1 1.5 Miles

Perimeter as of 09/07/2017 @ 0015 PDT
 cob 9/08/2017 0600



- Dip Site
 - Spot Fire
 - Drop Point
 - Value at Risk
 - Fire Location
 - Fire Origin
 - Repeater
 - Division Break
 - Mileposts
 - State Highway
 - 5 - High Degree Of User Comfort
 - 4 - Moderate Degree Of User Comfort
 - 3 - Suitable For Passenger Cars
 - 2 - High Clearance Vehicles
 - 1 - CLOSED
 - United States Forest Service (USFS)
 - Mount Rainier National Park
 - USFS - Wilderness
 - Private
 - FS Topo Building Point
- Interagency Incident Management**
RED TEAM





Norse Peak
 WA-OWF-000365
Norse Peak SE
 Division Map 9/8/2017 0700

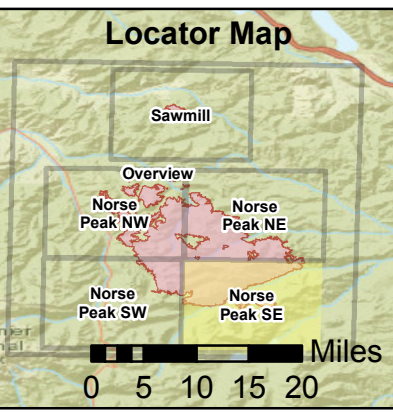
45,433 Ac. Norse Peak
 1499 Ac. American
 933 Ac. Sawmill

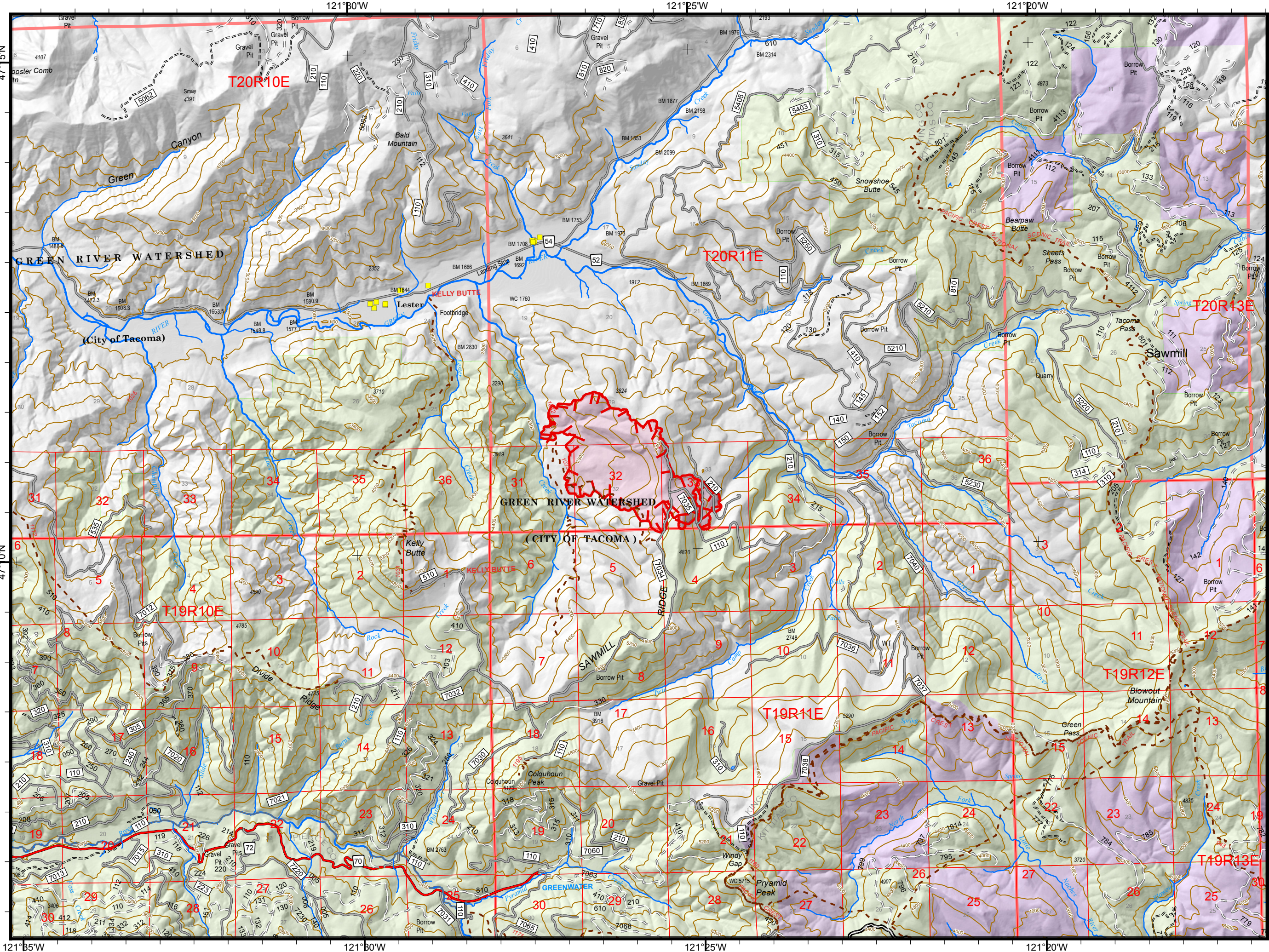
0 0.5 1 1.5 Miles

Perimeter as of 09/07/2017 @ 0015 PDT
 cob 9/08/2017 0600



- Road Closure
 - Mobile Weather Unit
 - Dip Site
 - Pump
 - Drop Point
 - Repeater
 - Fire Location
 - Spot Fire
 - Fire Origin
 - Other
 - Helipoint
 - Division Break
 - Hot Spot
 - Mileposts
 - State Highway
 - 5 - High Degree of User Comfort
 - 4 - Moderate Degree of User Comfort
 - 3 - Suitable For Passenger Cars
 - 2 - High Clearance Vehicles
 - 1 - CLOSED
 - United States Forest Service (USFS)
 - Mount Rainier National Park
 - USFS - Wilderness
 - Private
 - FSTopo_Building_Point
- Interagency Incident Management
RED TEAM





Norse Peak
WA-OWF-000365
Sawmill
Division Map 9/8/2017 0700

45,433 Ac. Norse Peak
 1499 Ac. American
 933 Ac. Sawmill

0 0.5 1 1.5 Miles

Perimeter as of 09/07/2017 @ 0015 PDT
 cob 9/08/2017 0600



- 5 - High Degree Of User Comfort
- 4 - Moderate Degree Of User Comfort
- 3 - Suitable For Passenger Cars
- 2 - High Clearance Vehicles
- 1 - ICLOSED
- United States Forest Service (USFS)
- Private
- FSTopo_Building_Point

