

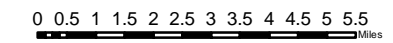
Norse Peak

WA-OWF-000365

Overview

Division Map 9/8/2017 0700

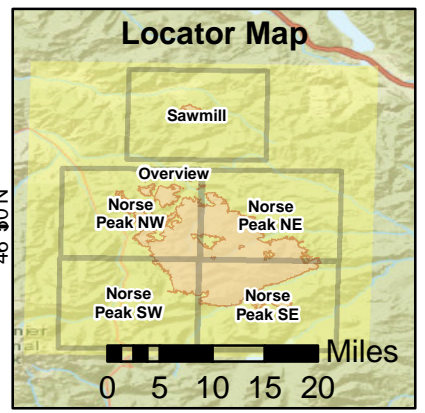
45,433 Ac. Norse Peak
1499 Ac. American
933 Ac. Sawmill

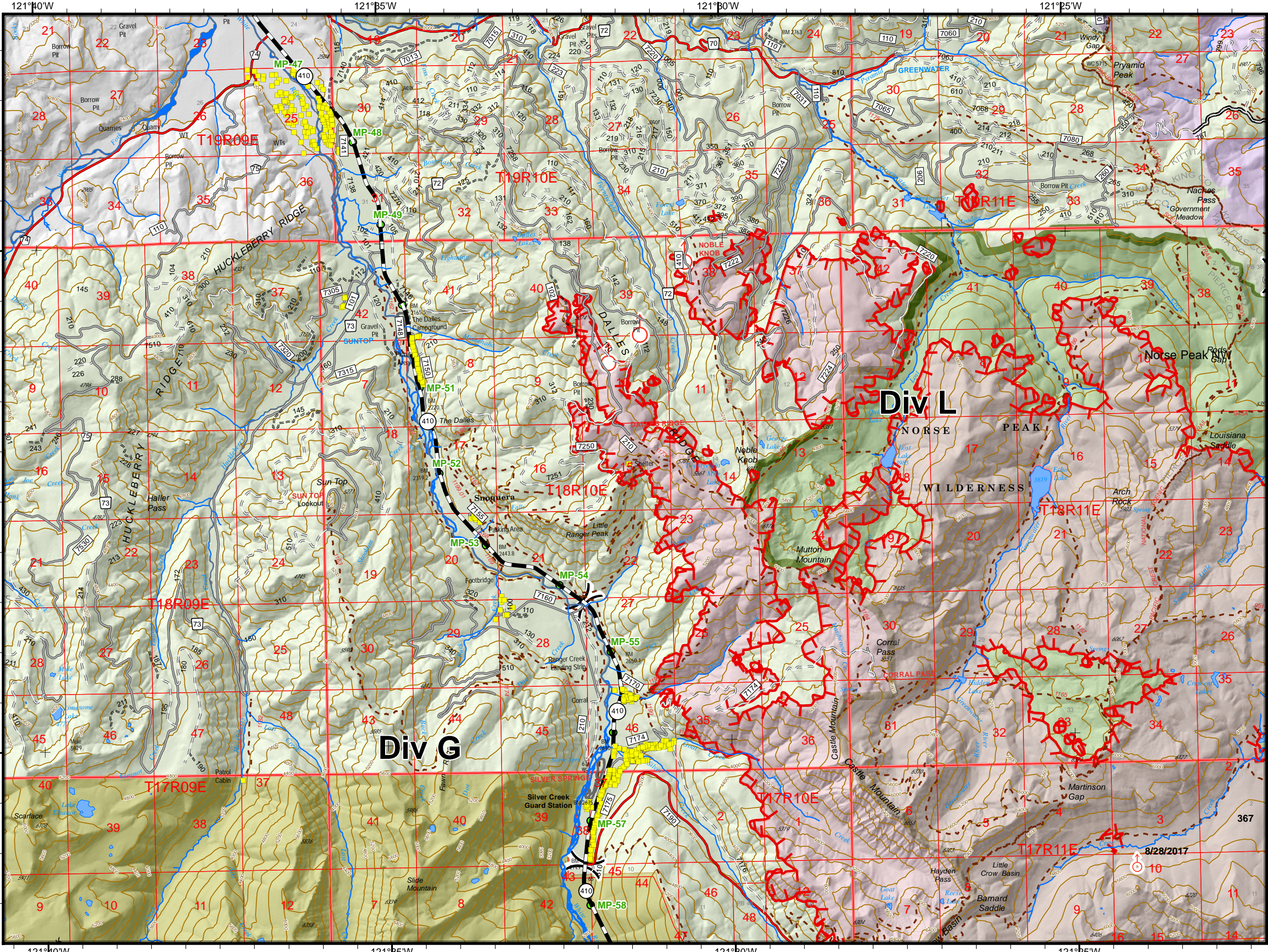


Perimeter as of 09/07/2017 @ 0015 PDT
cob 9/08/2017 0600



- Road Closure
- Incident Command Post
- Dip Site
- Mobile Weather Unit
- Drop Point
- Pump
- Fire Location
- Repeater
- Fire Origin
- Spot Fire
- Helibase
- Value at Risk
- Hot Spot
- Other
- Division Break
- Mileposts
- State Highway
- 5 - High Degree Of User Comfort
- 4 - Moderate Degree Of User Comfort
- 3 - Suitable For Passenger Cars
- 2 - High Clearance Vehicles
- 1 - ICLOSED
- United States Forest Service (USFS)
- Mount Rainier National Park
- Federal Government, Unknown
- USFS - Wilderness
- State Government, Wildlife
- Private
- FSTopo, Building Point





Norse Peak
WA-OWF-000365
Norse Peak NW
 Division Map 9/8/2017 0700

45,433 Ac. Norse Peak
 1499 Ac. American
 933 Ac. Sawmill

0 0.5 1 1.5 Miles

Perimeter as of 09/07/2017 © 0015 PDT
 cob 9/08/2017 0600

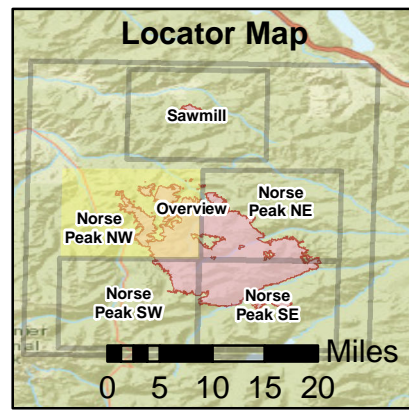


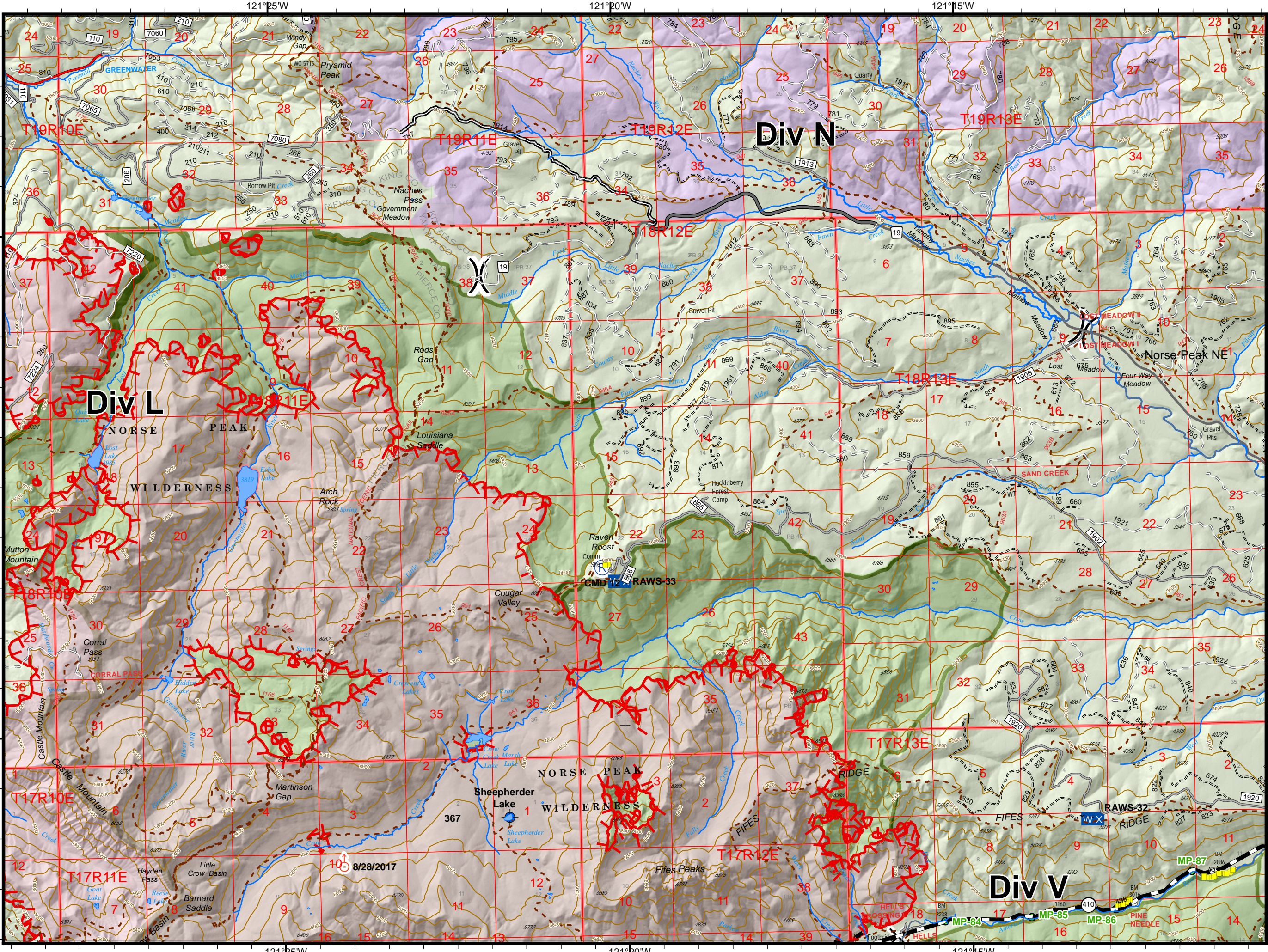
Fire Location (X) Division Break

Spot Fire (red circle with crosshair)

- Mileposts (green circle with number)
- State Highway (thick black line)
- 5 - High Degree Of User Comfort (red line)
- 4 - Moderate Degree Of User Comfort (black line)
- 3 - Suitable For Passenger Cars (grey line)
- 2 - High Clearance Vehicles (dashed line)
- 1 - CLOSED (dotted line)
- United States Forest Service (USFS) (green area)
- Mount Rainier National Park (light green area)
- USFS - Wilderness (darker green area)
- Private (purple area)
- FS Topo Building Point (yellow square)

Interagency Incident Management
RED TEAM





Norse Peak
 WA-OWF-000365
Norse Peak NE
 Division Map 9/8/2017 0700

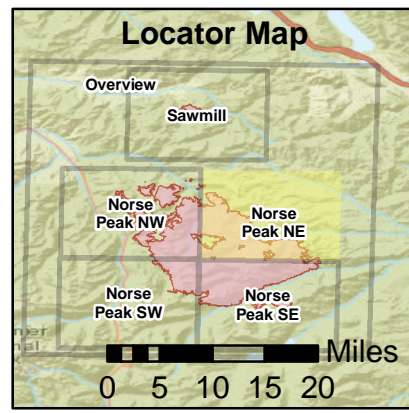
45,433 Ac. Norse Peak
 1499 Ac. American
 933 Ac. Sawmill

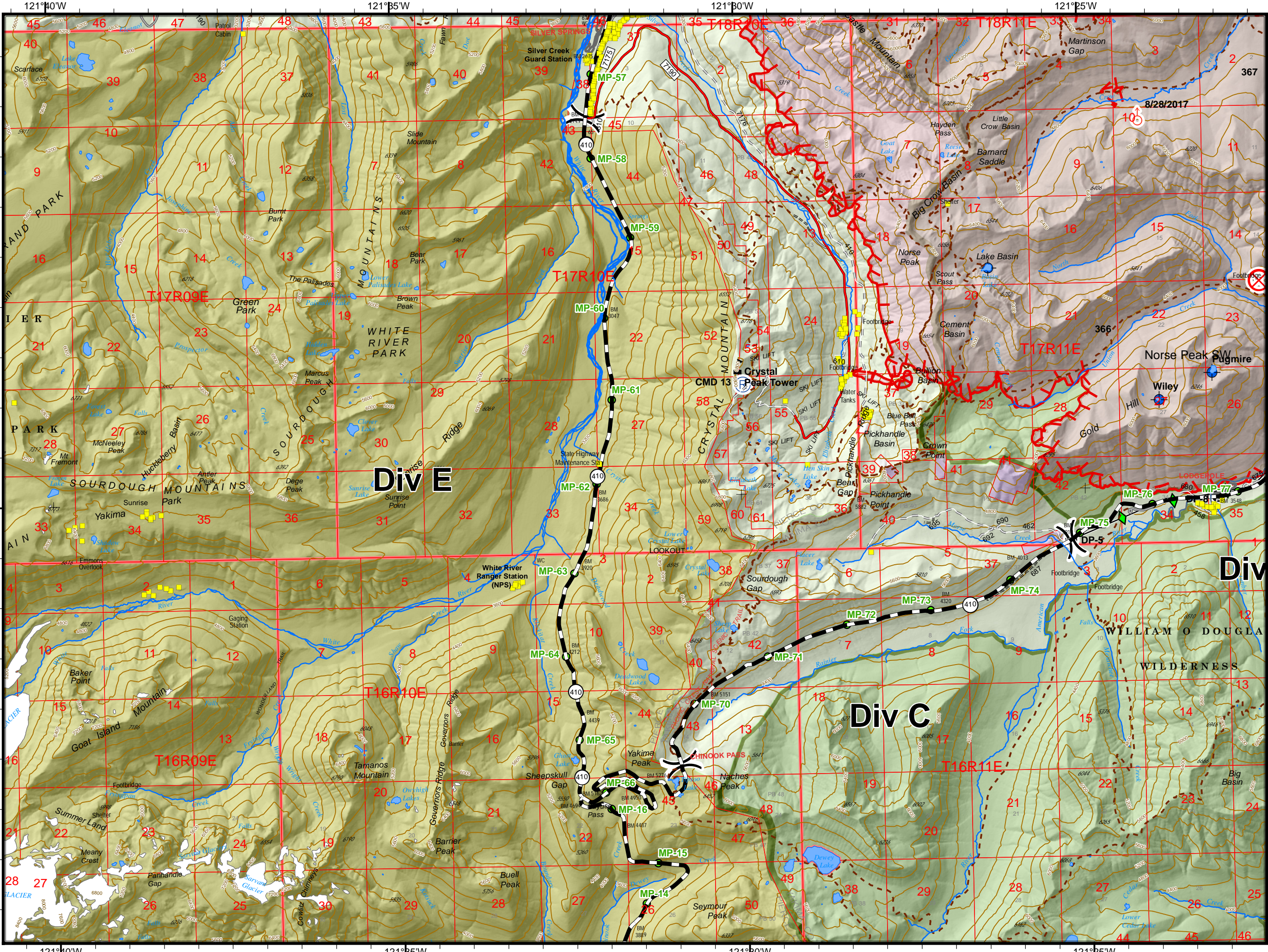
0 0.5 1 1.5 Miles

Perimeter as of 09/07/2017 @ 0015 PDT
 cob 9/08/2017 0600



- X Road Closure
- (R) Repeater
- ⊕ Dip Site
- ♂ Spot Fire
- Fire Location
- WX Mobile Weather Unit
- () Division Break
- Mileposts
- State Highway
- 5 - High Degree Of User Comfort
- 4 - Moderate Degree Of User Comfort
- 3 - Suitable For Passenger Cars
- 2 - High Clearance Vehicles
- 1 - CLOSED
- United States Forest Service (USFS)
- USFS - Wilderness
- Private
- FS Topo, Building Point





Norse Peak
 WA-OWF-000365
Norse Peak SW
 Division Map 9/8/2017 0700

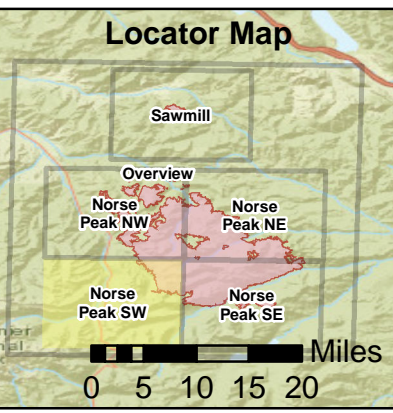
45,433 Ac. Norse Peak
 1499 Ac. American
 933 Ac. Sawmill

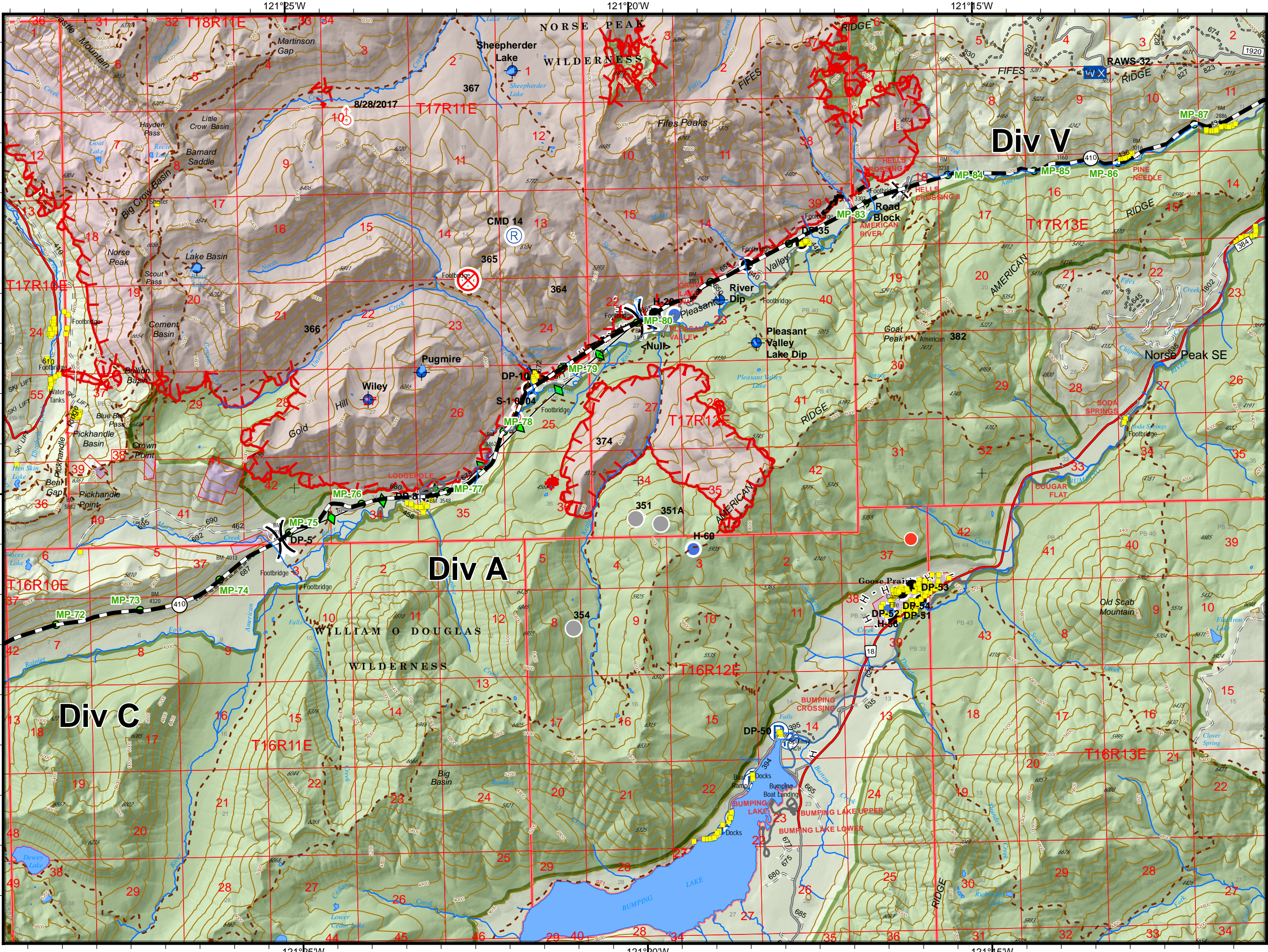
0 0.5 1 1.5 Miles

Perimeter as of 09/07/2017 © 0015 PDT
 cob 9/08/2017 0600



- Dip Site
 - Spot Fire
 - Drop Point
 - Value at Risk
 - Fire Location
 - Division Break
 - Fire Origin
 - Repeater
 - Mileposts
 - State Highway
 - 5 - High Degree Of User Comfort
 - 4 - Moderate Degree Of User Comfort
 - 3 - Suitable For Passenger Cars
 - 2 - High Clearance Vehicles
 - 1 - CLOSED
 - United States Forest Service (USFS)
 - Mount Rainier National Park
 - USFS - Wilderness
 - Private
 - FSTopo_Building_Point
- Interagency Incident Management**
RED TEAM





Norse Peak
 WA-OWF-000365
Norse Peak SE
 Division Map 9/8/2017 0700

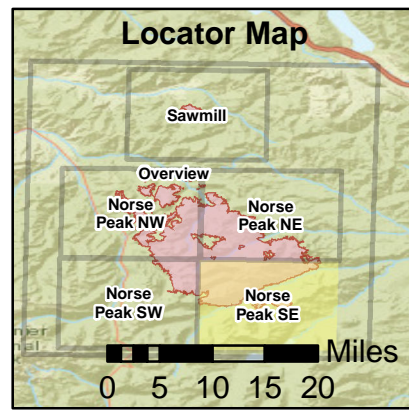
45,433 Ac. Norse Peak
 1499 Ac. American
 933 Ac. Sawmill

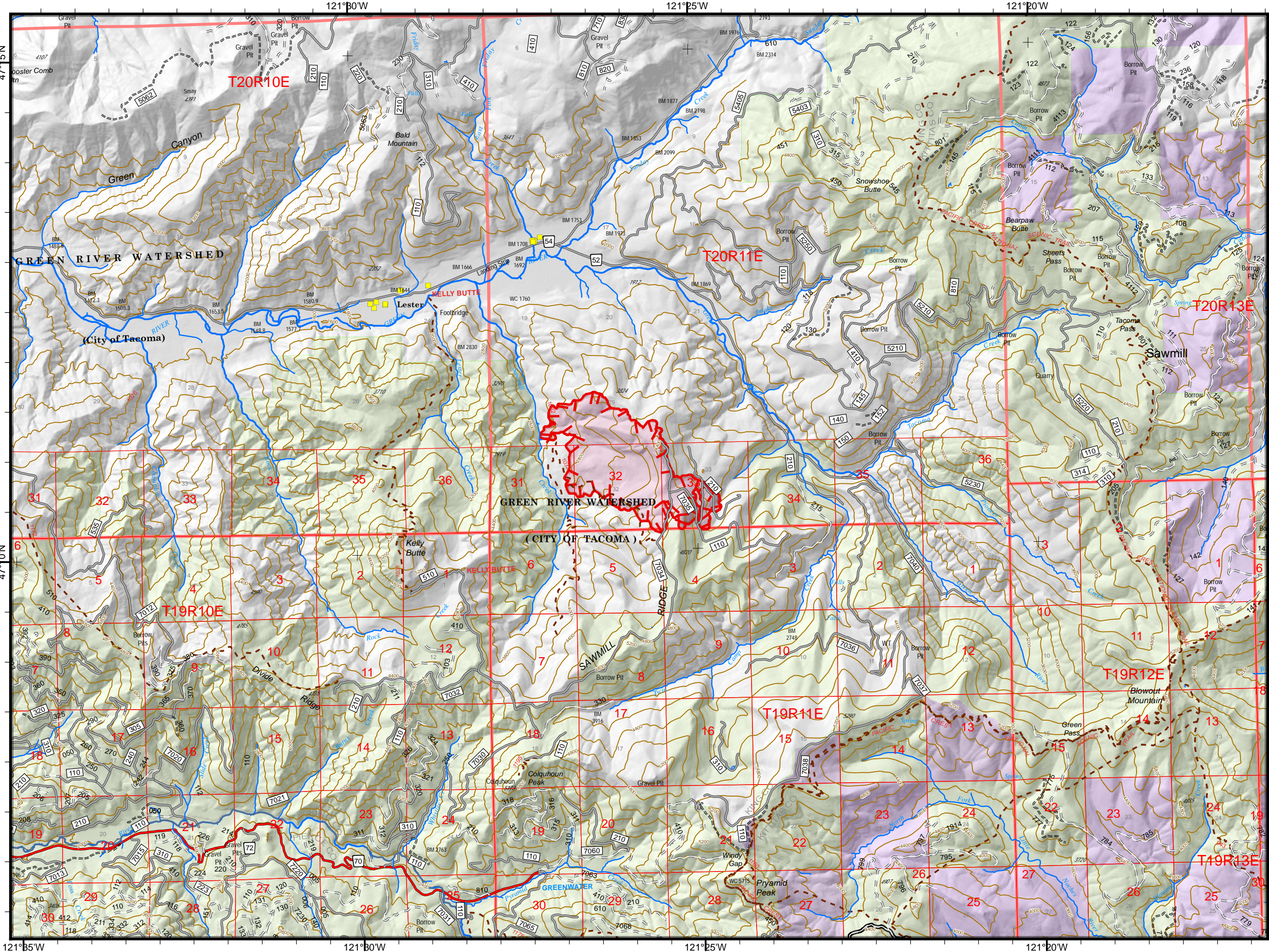
0 0.5 1 1.5 Miles

Perimeter as of 09/07/2017 @ 0015 PDT
 cob 9/08/2017 0600



- Road Closure
 - Mobile Weather Unit
 - Dip Site
 - Pump
 - Drop Point
 - Repeater
 - Fire Location
 - Spot Fire
 - Fire Origin
 - Other
 - Helipoint
 - Division Break
 - Hot Spot
 - Mileposts
 - State Highway
 - 5 - High Degree Of User Comfort
 - 4 - Moderate Degree Of User Comfort
 - 3 - Suitable For Passenger Cars
 - 2 - High Clearance Vehicles
 - 1 - CLOSED
 - United States Forest Service (USFS)
 - Mount Ranier National Park
 - USFS - Wilderness
 - Private
 - FSTopo, Building Point
- Interagency Incident Management
RED TEAM





Norse Peak
 WA-OWF-000365
Sawmill
 Division Map 9/8/2017 0700

45,433 Ac. Norse Peak
 1499 Ac. American
 933 Ac. Sawmill

0 0.5 1 1.5 Miles

Perimeter as of 09/07/2017 @ 0015 PDT
 cob 9/08/2017 0600



- 5 - High Degree Of User Comfort
- 4 - Moderate Degree Of User Comfort
- 3 - Suitable For Passenger Cars
- 2 - High Clearance Vehicles
- 1 - ICLOSED
- United States Forest Service (USFS)
- Private
- FSTopo_Building_Point

