

121°30'W 121°25'W 121°20'W 121°15'W 121°10'W

# Norse Peak Fire

WA-OWF-000365  
Planning Map 9/8/2017 1700

45,433 Ac. (Est.) Norse Peak  
1,449 Ac. American  
933 Ac. Sawmill

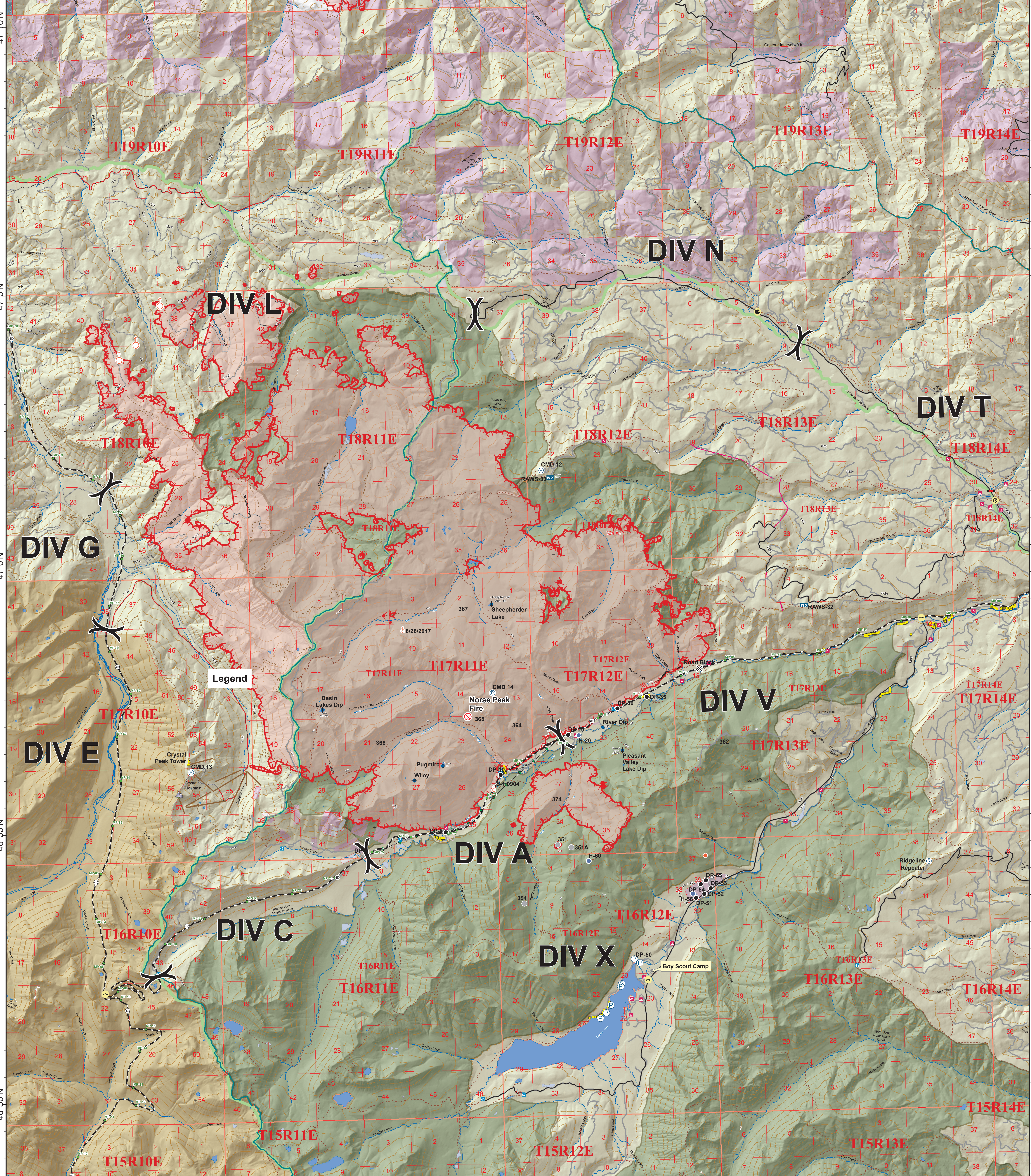


**Legend**

⊗ Road Closure	● Dip Site	● Spot Fire	— Uncontrolled Fire Edge	United States Forest Service (USFS)
● Fire Location	● Fire Origin	● Value at Risk	— Completed Line	Mount Rainier National Park
● Helispot	● Helispot	● Other	— Completed Dozer Line	USFS - Wilderness
● Mobile Weather Unit	● Pump	● Repeater	— Completed Hand Line	Forest Boundary
● Repeater	● Repeater	● Repeater	— Completed Plow Line	FFPA/Private
			— Boating Site	DNR Managed Lands
			— Campground	County Boundaries
			— Lookout/Cabin	SC_E0
			— Trailhead	SO
			— Mileposts	SO_Y5
			— State Highway	UMB
			— Main Roads	
			— Roads	
			— Trails	
			— Recreation Residences	

0 0.5 1 2 3 4 Miles

Contour Interval 400 ft.



121°35'W 121°30'W 121°25'W 121°20'W 121°15'W 121°10'W