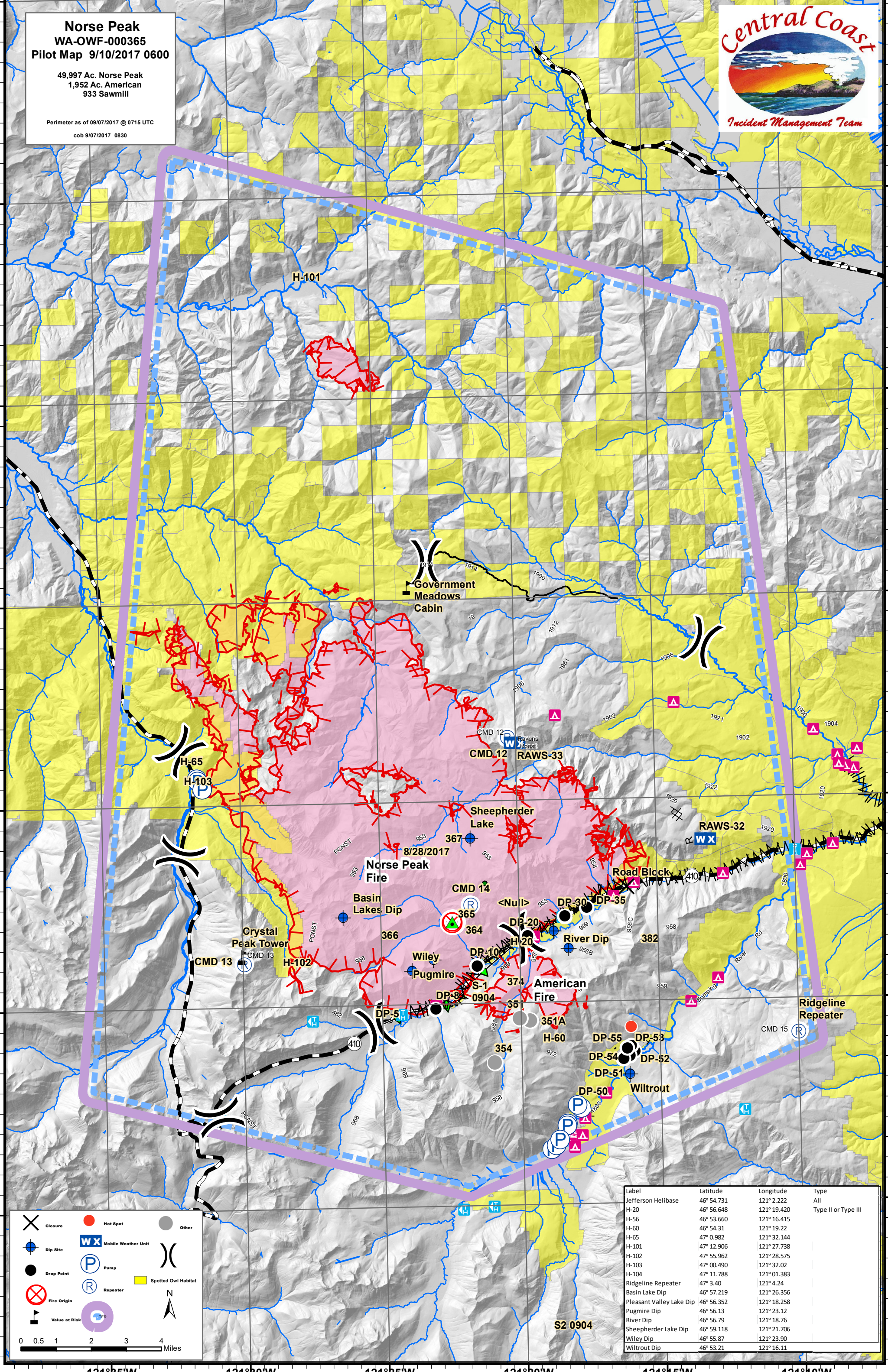


Norse Peak
WA-OWF-000365
Pilot Map 9/10/2017 0600

49,997 Ac. Norse Peak
 1,952 Ac. American
 933 Sawmill

Perimeter as of 09/07/2017 @ 0715 UTC
 cob 9/07/2017 0830



Label	Latitude	Longitude	Type
Jefferson Helibase	46° 54.731	121° 2.222	All
H-20	46° 56.648	121° 19.420	Type II or Type III
H-56	46° 53.660	121° 16.415	
H-60	46° 54.31	121° 19.22	
H-65	47° 0.982	121° 32.144	
H-101	47° 12.906	121° 27.738	
H-102	47° 55.962	121° 28.575	
H-103	47° 00.490	121° 32.02	
H-104	47° 11.788	121° 01.383	
Ridgeline Repeater	47° 3.40	121° 4.24	
Basin Lake Dip	46° 57.219	121° 26.356	
Pleasant Valley Lake Dip	46° 56.352	121° 18.258	
Pugmire Dip	46° 56.13	121° 23.12	
River Dip	46° 56.79	121° 18.76	
Shepherd Lake Dip	46° 59.118	121° 21.706	
Wiley Dip	46° 55.87	121° 23.90	
Wilttrout Dip	46° 53.21	121° 16.11	