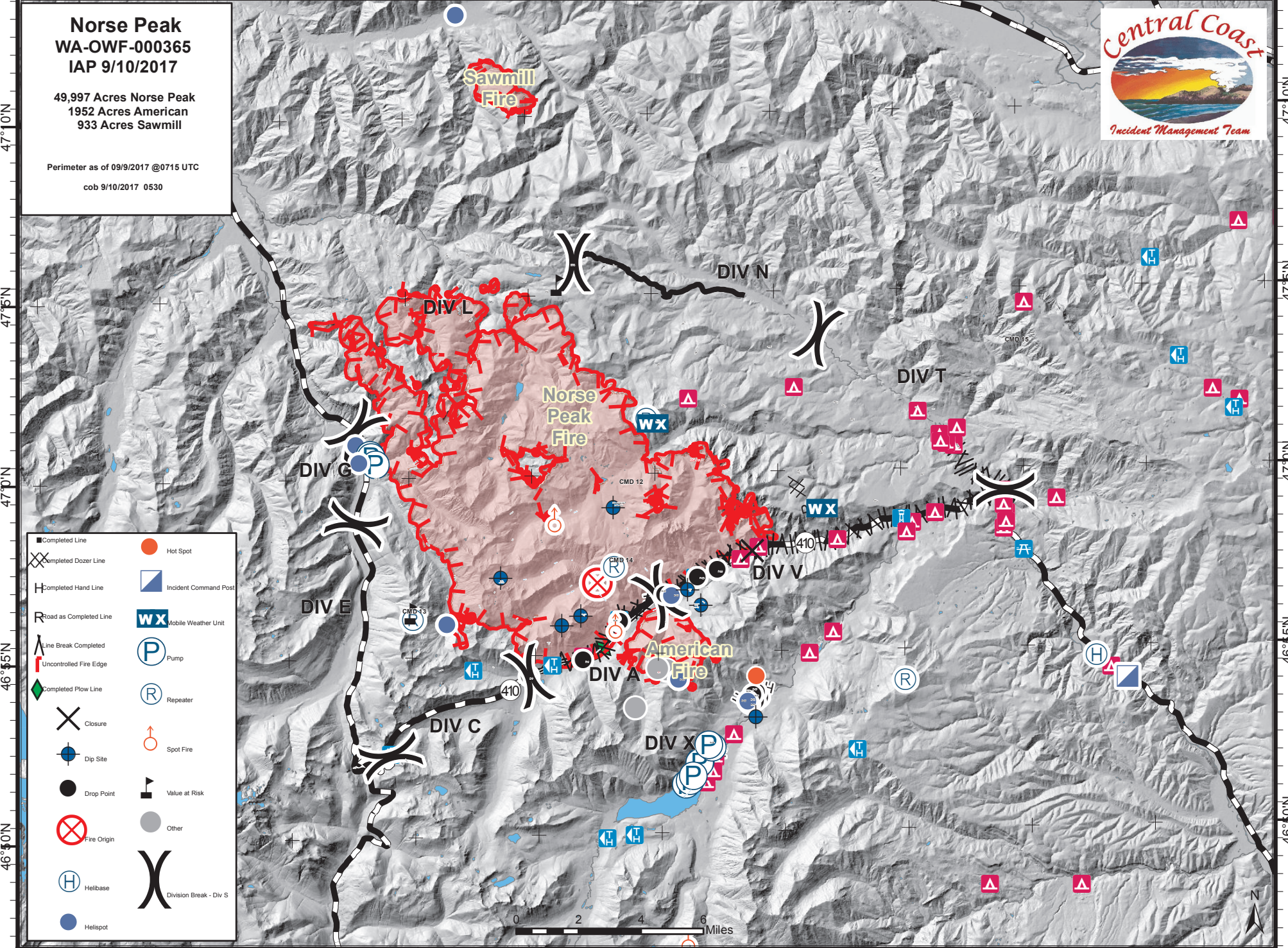


121°45'W 121°40'W 121°35'W 121°30'W 121°25'W 121°20'W 121°15'W 121°10'W 121°5'W 120°55'W



Norse Peak
WA-OWF-000365
IAP 9/10/2017

49,997 Acres Norse Peak
 1952 Acres American
 933 Acres Sawmill

Perimeter as of 09/9/2017 @0715 UTC
 cob 9/10/2017 0530



- | | |
|--------------------------|--------------------------|
| ■ Completed Line | ● Hot Spot |
| XX Completed Dozer Line | ▣ Incident Command Post |
| H Completed Hand Line | WX Mobile Weather Unit |
| R Road as Completed Line | P Pump |
| — Line Break Completed | R Repeater |
| — Uncontrolled Fire Edge | ♂ Spot Fire |
| ◆ Completed Plow Line | ♂ Value at Risk |
| X Closure | ● Other |
| ● Dip Site | ○ Helibase |
| ● Drop Point | ● Helispot |
| ⊗ Fire Origin | X Division Break - Div S |
| ⊙ Helibase | |
| ● Helispot | |

0 2 4 6 Miles

121°45'W 121°40'W 121°35'W 121°30'W 121°25'W 121°20'W 121°15'W 121°10'W 121°5'W 120°55'W

47°10'N
47°5'N
47°0'N
46°55'N
46°50'N
46°45'N
46°40'N

47°10'N
47°5'N
47°0'N
46°55'N
46°50'N
46°45'N
46°40'N