

AIR OPERATIONS SUMMARY

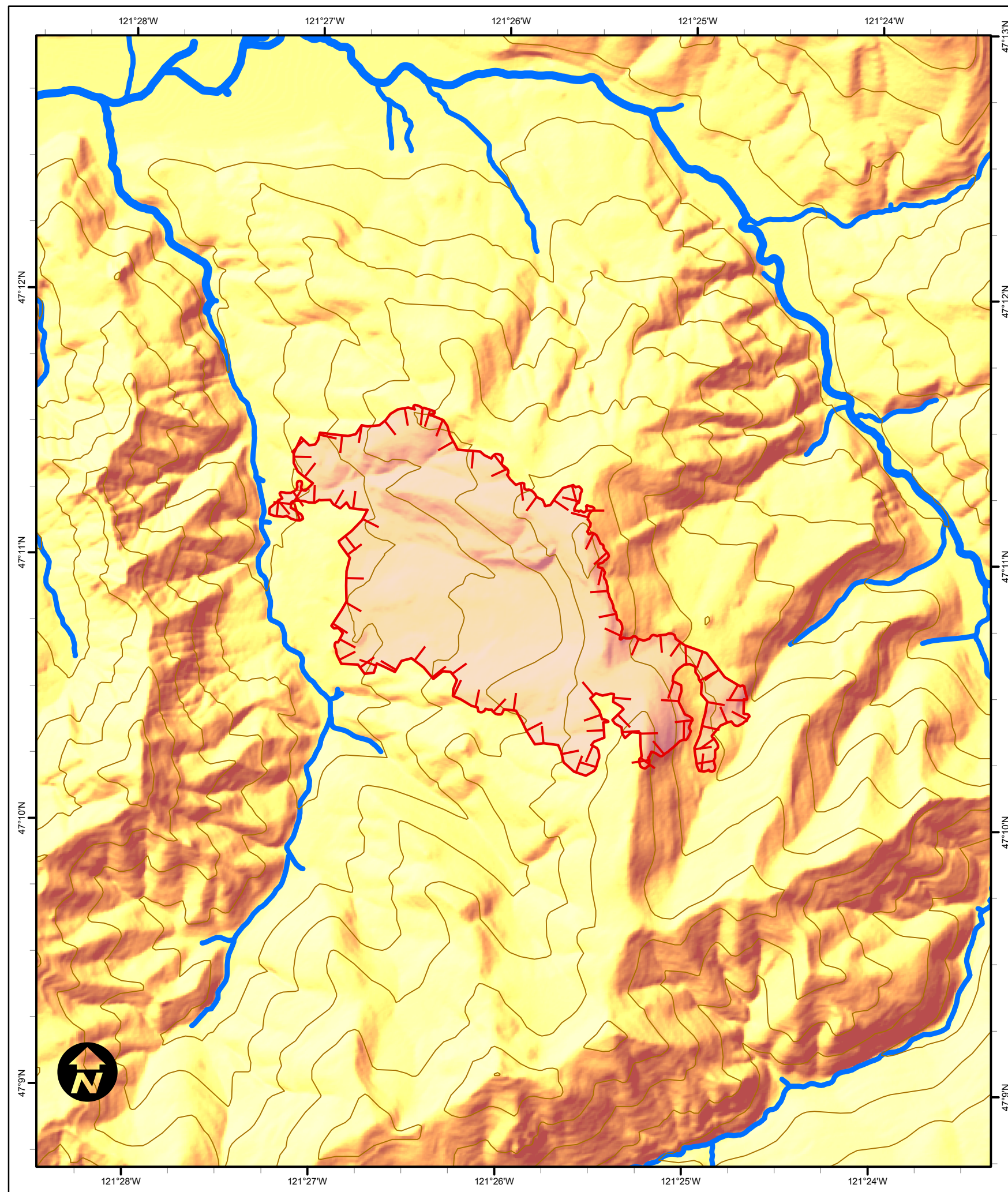
PREPARED BY: John Crotty, AOBD

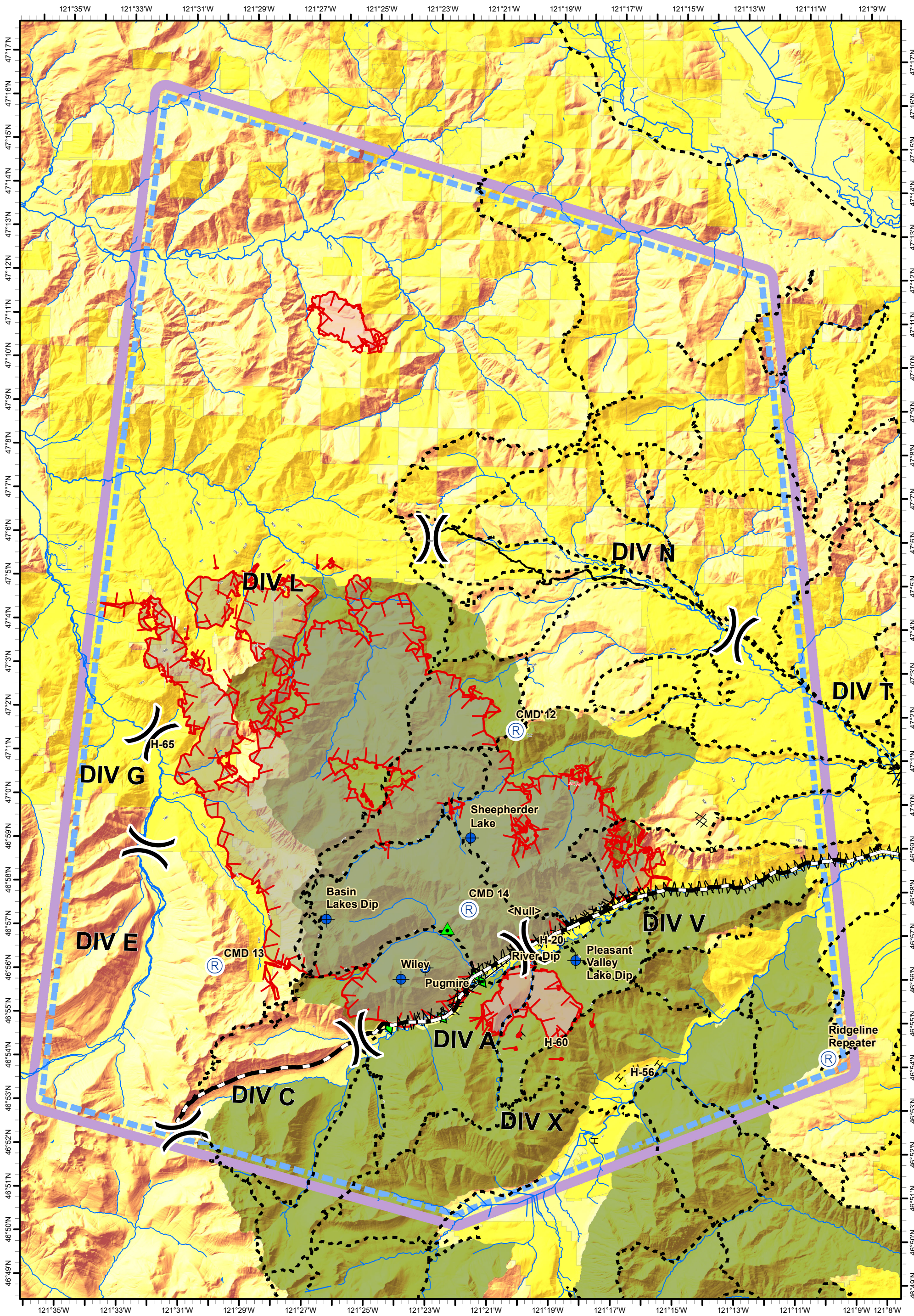
PREPARED DATE/TIME: 09/09/2017, 1600

1. INCIDENT NAME: Norse Peak / American/ Sawmill	2. OPERATIONAL PERIOD DATE & TIME: 09/10/2017, 0600 - 2000 Sunrise: 0635 Sunset: 1924 Sunset + 30: 1954 (for Naches, WA)	3. e-mail to: wacwicc@gmail.com
4. REMARKS: (safety notes, hazards, special instructions, priorities, etc.) *line personnel report any witnessed airspace intrusions from non-incident aircraft including drones to DIVS promptly *pilots use caution when dipping out of unmonitored remote water sources - watch for cables, powerlines, snags, and wires *N371SH (short-haul capable) may be used for medevac (life threatening) or medical transport (non-life threatening) missions *Cougar 30 Hoist capable on day to day basis—no medic *Record & track all dips and water application *All Buckets used on Sawmill must be inspected and sanitized by Tacoma Water District prior to use. *Emergency Air Guard - 168.6250 FM w/ tx tone 110.9, National Flight Following - 168.6500 FM w/ tx tone 110.9		5. TFR: 7/9995 Polygon; surface up to 9,500 feet MSL; frequency 120.2250 AM

6. PERSONNEL	Phone	7. FREQUENCY	AM	FM	8. FIXED WING	FAA N# / Type / Make-Model / Base
AOBD: John Crotty AOBD Sawmill- Galen Young	971-272-1563 805-440-6186 575-574-8720	Air-to-Air: (primary / TFR)	120.2250		Air Tactical	N161AB / Beech Baron 58P / Wenatchee (A-9)
ASGS: Curt Warner ASGS-Sawmill-Kent Wedin	971-272-1564 575-538-1075	Air-to-Air: (secondary)	124.8750			
ATGS: Matt Desimone Matt Woosely	509-860-6693 509-322-5260	Air-to-Ground: (primary)-Norse. Sawmill		169.1500 167.900	Lead Planes	order as needed through Central Washington Interagency Communications Center aircraft desk, 509-884-3473
HLCO:		Air-to-Ground: (secondary)		168.5750		
Helibase Jefferson	509-658-1493	Helibase Deck:		163.1000	Air Tankers	order as needed through Central Washington Interagency Communications Center aircraft desk, 509-884-3473
HEB2: Garrett Harasek Kari Hirschberger (T)		Helibase TOLC:				
Central Washington I. C. C. aircraft desk	509-884-3473	WA03 Wenatchee Air-to-Air 01:	132.5500		Support Equipment	
WA-OWF UAO: Patti Jones	office 509-664-9335 cell 509-668-2801	WA03 Wenatchee Air-to-Ground 40:		167.4500		

Label	Latitude	Longitude	Type
Jefferson Helibase	46° 54.731	121° 2.222	All
H-20	46° 56.648	121° 19.420	Type II or Type III
H-56	46° 53.660	121° 16.415	
H-60	46° 54.31	121° 19.22	
H-65	47° 0.982	121° 32.144	
H-101	47° 12.906	121° 27.738	
H-102	47° 55.962	121° 28.575	
H-103	47° 00.490	121° 32.02	
H-104	47° 11.788	121° 01.383	
Ridgeline Repeater	47° 3.40	121° 4.24	
Basin Lake Dip	46° 57.219	121° 26.356	
Pleasant Valley Lake Dip	46° 56.352	121° 18.258	
Pugmire Dip	46° 56.13	121° 23.12	
River Dip	46° 56.79	121° 18.76	
Shepherd Lake Dip	46° 59.118	121° 21.706	
Wiley Dip	46° 55.87	121° 23.90	





Sawmill Fire
 WA-SPS September 10, 2017
Pilot Map



- Division Break
- Uncontrolled Fire Edge
- Completed Line
- Completed Hand Line

- Wilderness
- Spotted Owl Habitat
- Repeater
- NORSE_PEAK
- Helibase
- Dip Site
- Drop Point
- Fish
- Non-fish
- Shorelines of the State