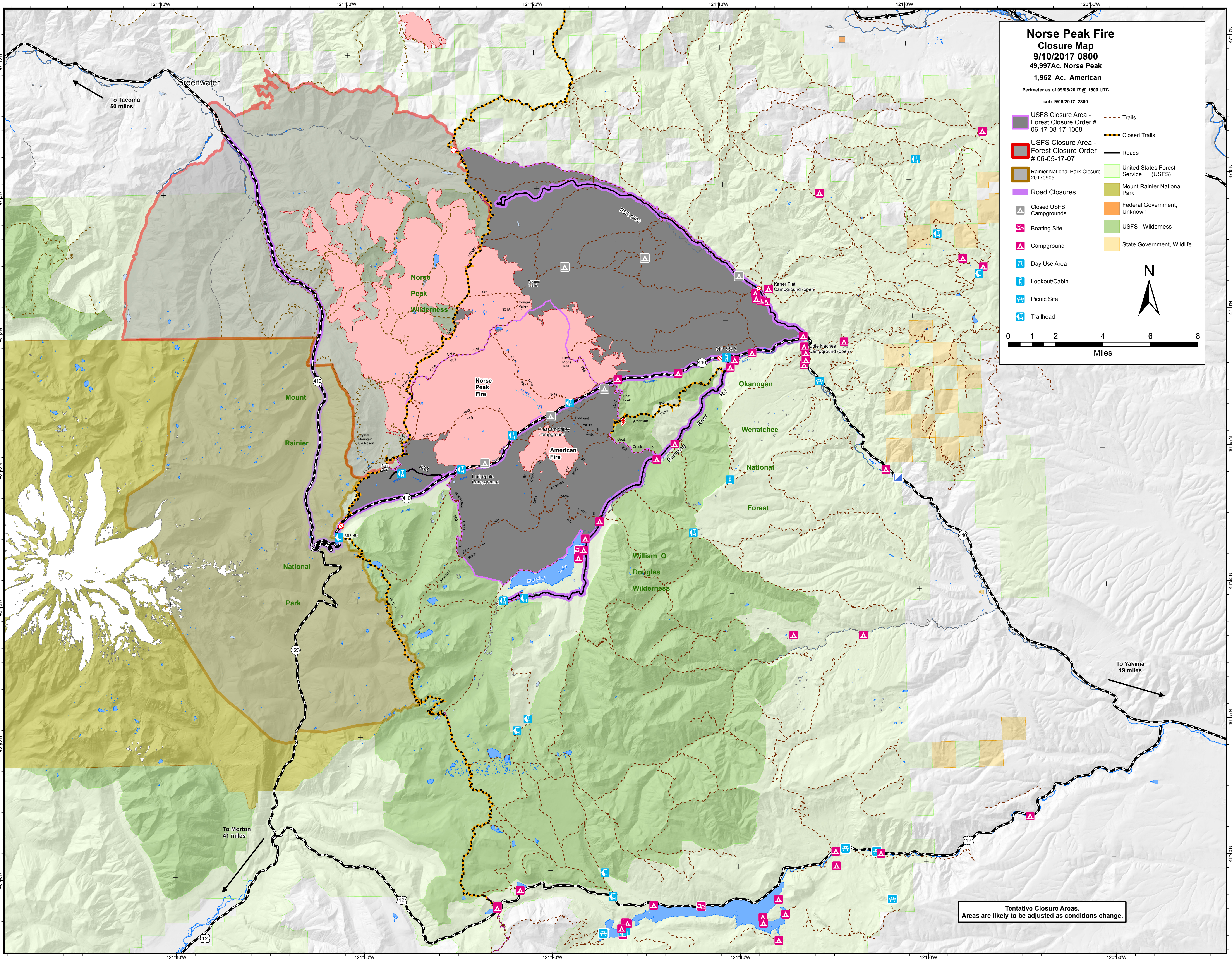
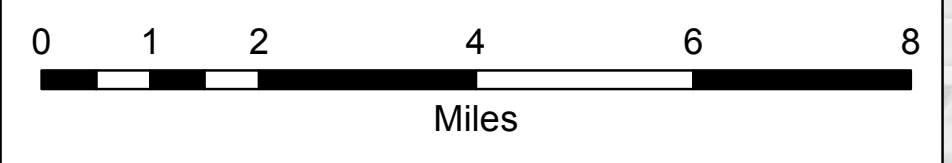


**Norse Peak Fire
Closure Map
9/10/2017 0800
49,997 Ac. Norse Peak
1,952 Ac. American**

Perimeter as of 09/08/2017 @ 1500 UTC
cob 9/08/2017 2300

- USFS Closure Area - Forest Closure Order # 06-17-08-17-1008
- USFS Closure Area - Forest Closure Order # 06-05-17-07
- Rainier National Park Closure 20170905
- Road Closures
- Closed USFS Campgrounds
- Boating Site
- Campground
- Day Use Area
- Lookout/Cabin
- Picnic Site
- Trailhead
- Trails
- Closed Trails
- Roads
- United States Forest Service (USFS)
- Mount Rainier National Park
- Federal Government, Unknown
- USFS - Wilderness
- State Government, Wildlife



Tentative Closure Areas.
Areas are likely to be adjusted as conditions change.