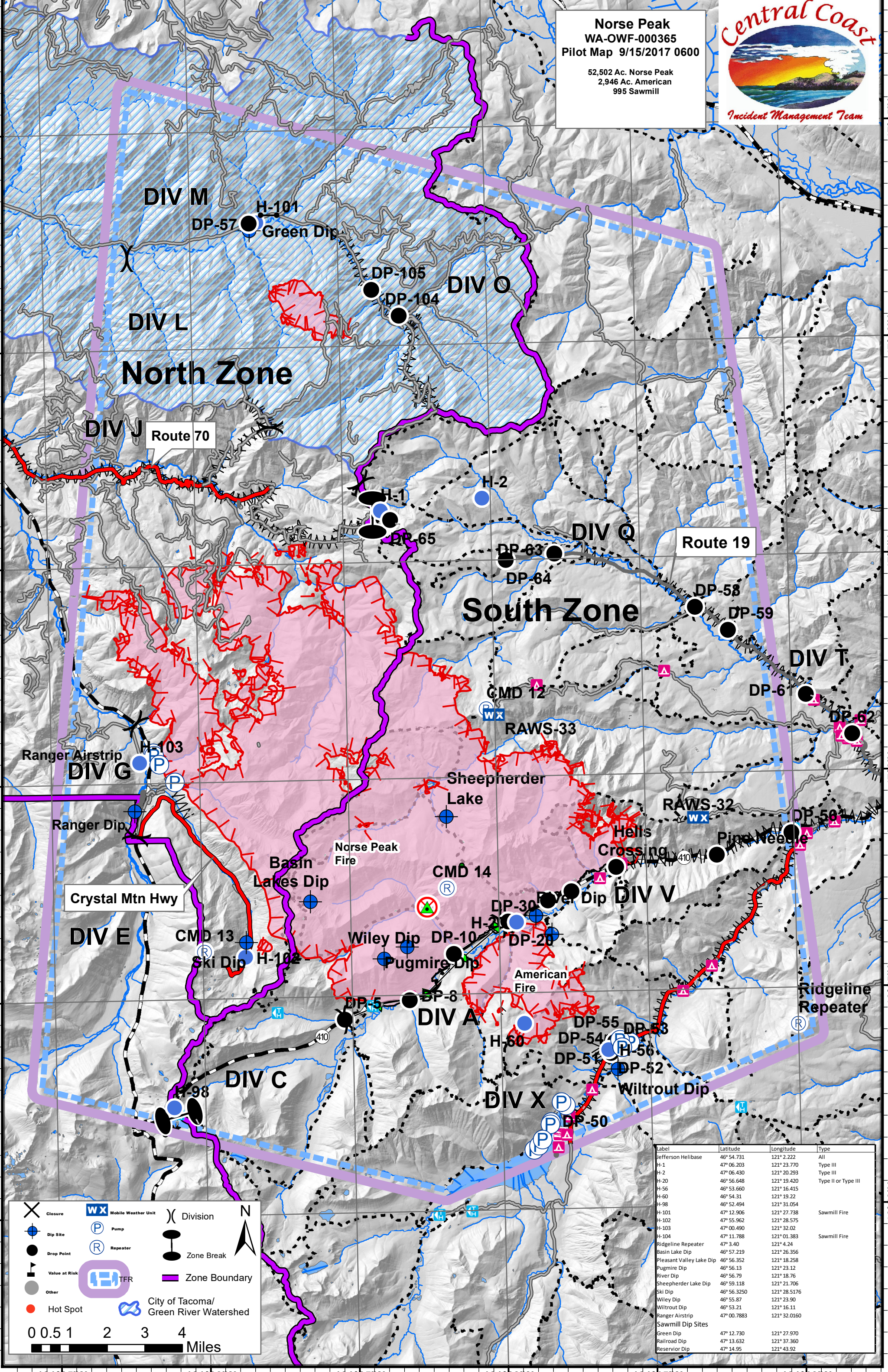
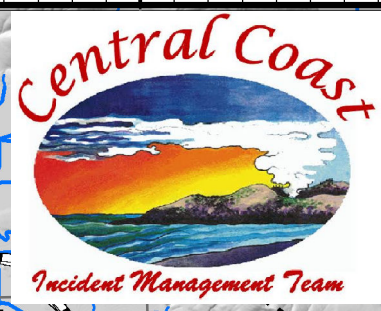


**Norse Peak**  
 WA-OWF-000365  
 Pilot Map 9/15/2017 0600

52,502 Ac. Norse Peak  
 2,946 Ac. American  
 995 Sawmill



Label	Latitude	Longitude	Type
Jefferson Helibase	46° 54.731	121° 2.222	All
H-1	47° 06.203	121° 23.770	Type III
H-2	47° 06.430	121° 20.293	Type III
H-20	46° 56.648	121° 19.420	Type II or Type III
H-56	46° 53.660	121° 16.415	
H-60	46° 54.31	121° 19.22	
H-98	46° 52.494	121° 31.054	
H-101	47° 12.906	121° 27.738	Sawmill Fire
H-102	47° 55.962	121° 28.575	
H-103	47° 00.490	121° 32.02	
H-104	47° 11.788	121° 01.383	Sawmill Fire
Ridgeline Repeater	47° 3.40	121° 4.24	
Basin Lake Dip	46° 57.219	121° 26.356	
Pleasant Valley Lake Dip	46° 56.352	121° 18.258	
Pugmire Dip	46° 56.13	121° 23.12	
River Dip	46° 56.79	121° 18.76	
Sheepherder Lake Dip	46° 59.118	121° 21.706	
Ski Dip	46° 56.3250	121° 28.5176	
Wiley Dip	46° 55.87	121° 23.90	
Wiltroat Dip	46° 53.21	121° 16.11	
Ranger Airstrip	47° 00.7883	121° 32.0160	
Sawmill Dip Sites			
Green Dip	47° 12.730	121° 27.970	
Railroad Dip	47° 13.632	121° 37.360	
Reservoir Dip	47° 14.95	121° 43.92	

**Legend**

- X Closure
- Dip Site
- Drop Point
- ▲ Value at Risk
- Other
- Hot Spot
- WX Mobile Weather Unit
- P Pump
- R Repeater
- TFR
- City of Tacoma/ Green River Watershed
- ⌋ Division
- Zone Break
- Zone Boundary

0 0.5 1 2 3 4 Miles