

**Norse Peak**  
 WA-OWF-000365  
**Overview**  
 Division Map 9/15/2017

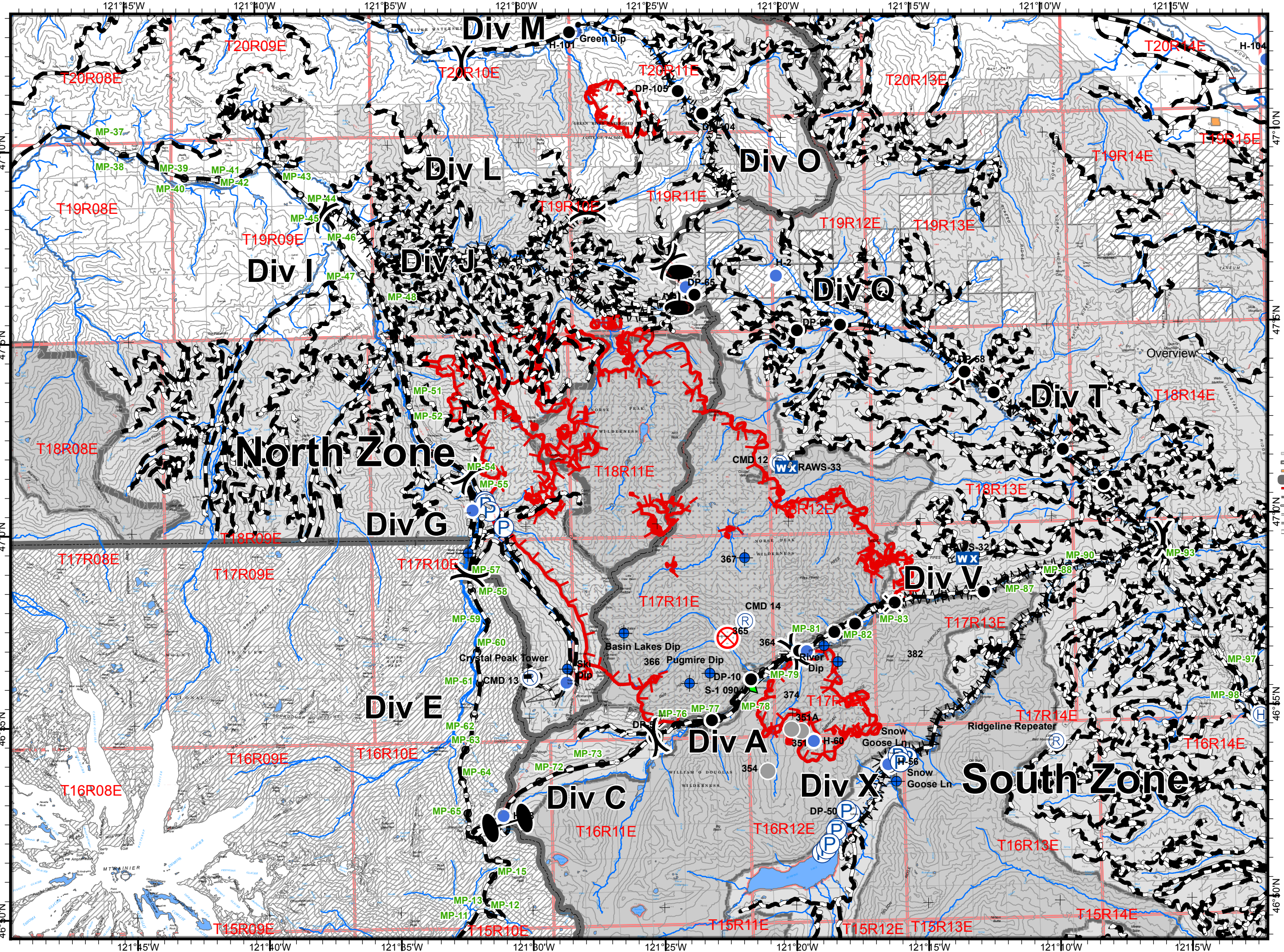
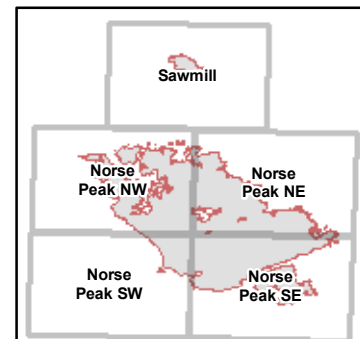
52,502 Ac. Norse Peak  
 2,946 Ac. American  
 995 Ac. Sawmill



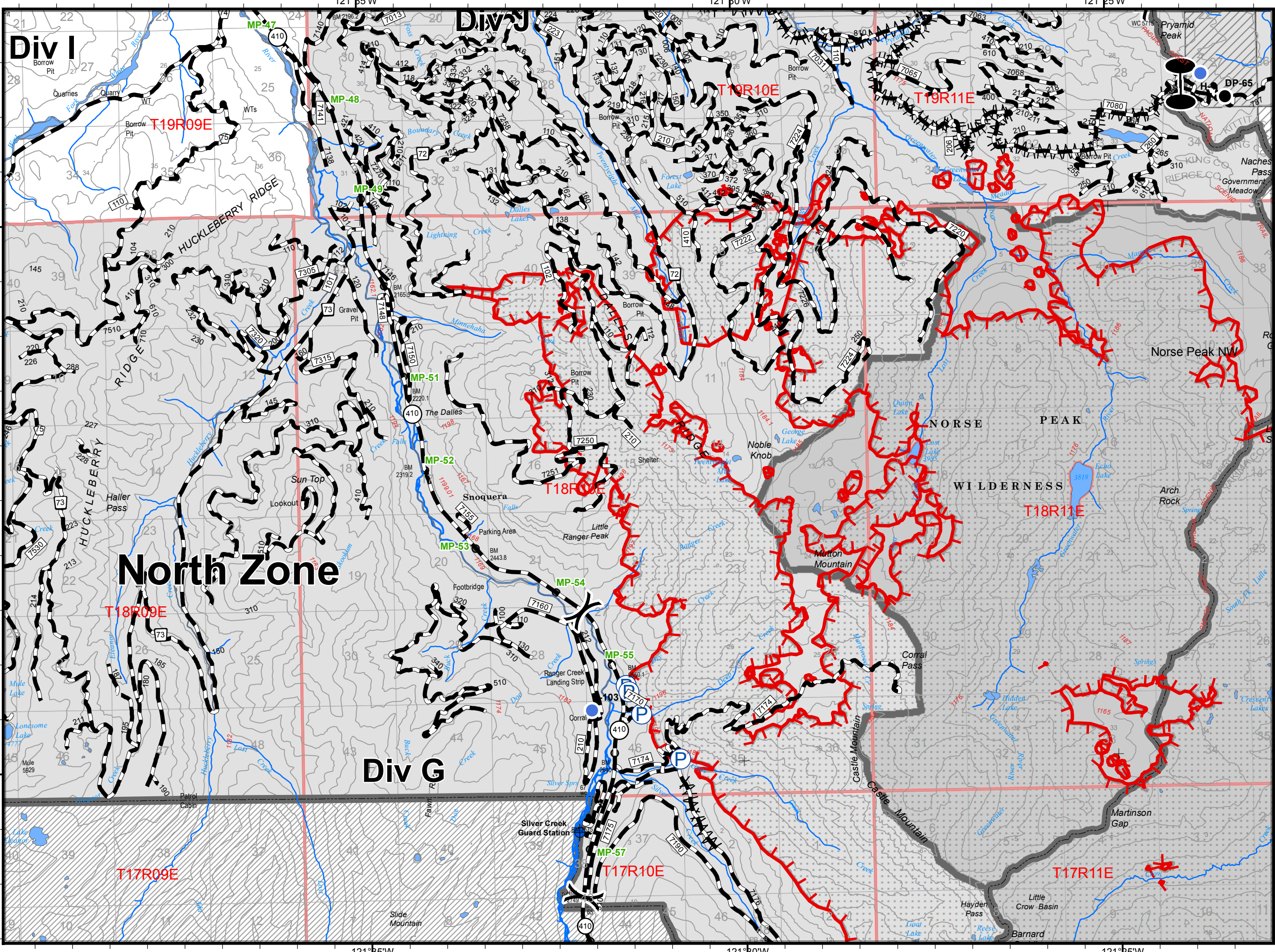
NIFC  
 Online Maps

- United States Forest Service (USFS)
- Mount Rainier National Park
- Federal Government, Unknown
- USFS - Wilderness
- 5 - High Degree Of User Comfort
- 4 - Moderate Degree Of User Comfort
- 3 - Suitable For Passenger Cars
- 2 - High Clearance Vehicles
- 1 - ICLOSED
- State Highway
- Helispot
- WX Mobile Weather Unit
- Pump
- Repeater
- Value at Risk
- Other
- Division Break
- One Break
- Mileposts
- Private
- Road Closure
- Dip Site
- Drop Point
- Fire Origin
- Gate
- Helibase

**Locator Map**







**Norse Peak**  
 WA-OWF-000365  
**Norse Peak NW**  
 Division Map 9/15/2017

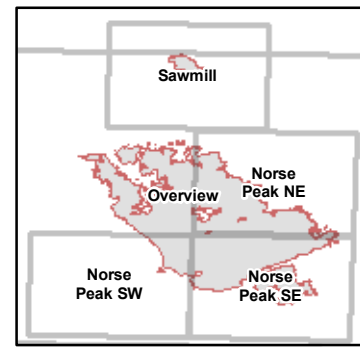
52,502 Ac. Norse Peak  
 2,946 Ac. American  
 995 Ac. Sawmill



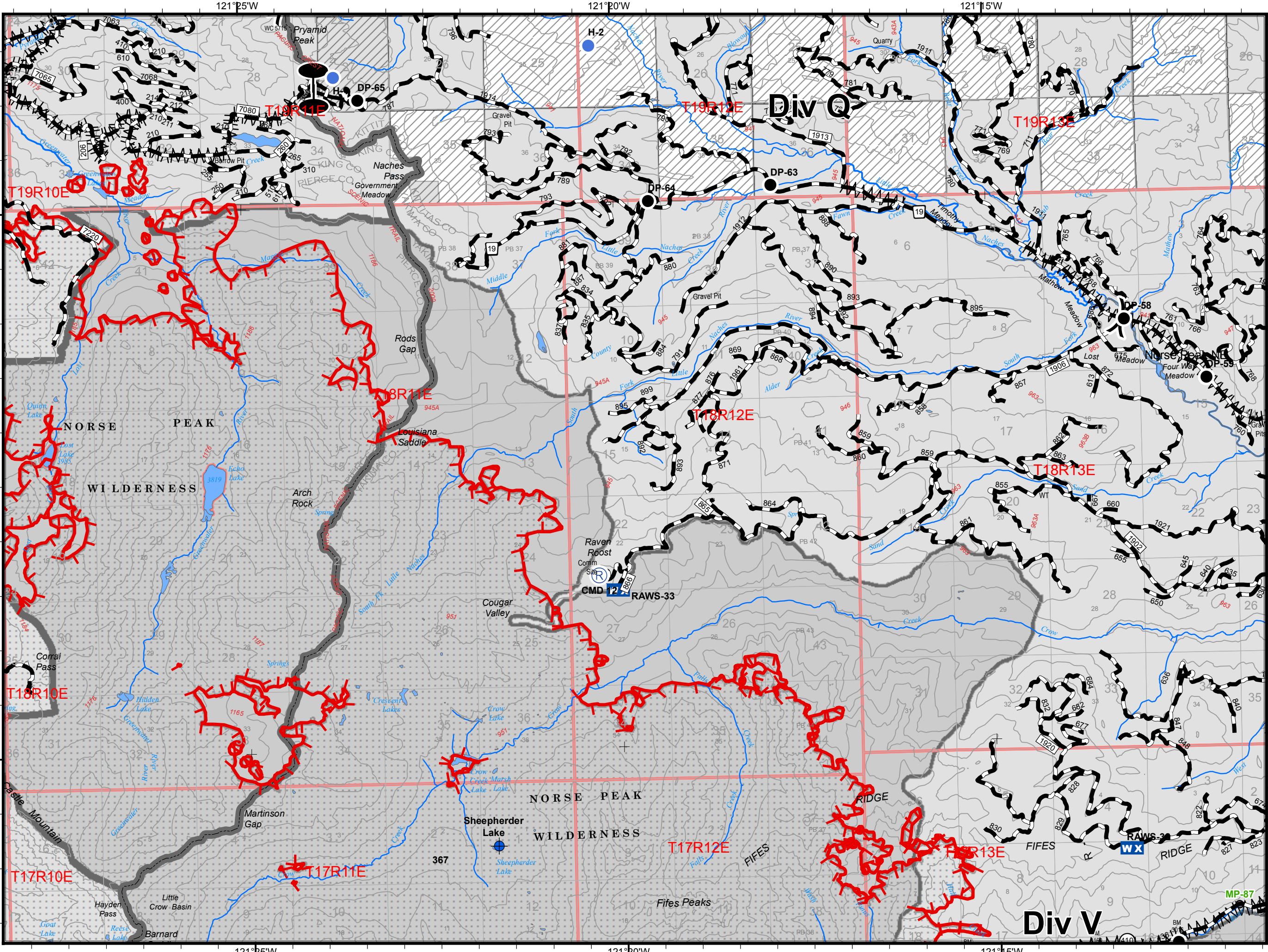
NIFC  
 Online Maps

- United States Forest Service (USFS)
- Mount Rainier National Park
- USFS - Wilderness
- 5 - High Degree Of User Comfort
- 4 - Moderate Degree Of User Comfort
- 3 - Suitable For Passenger Cars
- 2 - High Clearance Vehicles
- 1 - CLOSED
- State Highway
- Dip Site
- Drop Point
- Helispot
- Mileposts
- Private
- Pump
- Division Break
- One Break

**Locator Map**







**Norse Peak**  
 WA-OWF-000365  
**Norse Peak NE**  
 Division Map 9/15/2017

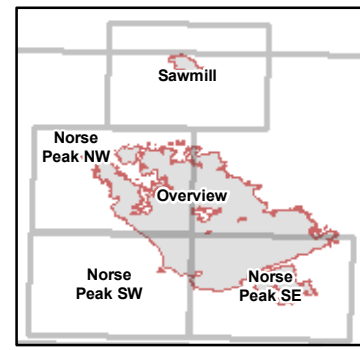
52,502 Ac. Norse Peak  
 2,946 Ac. American  
 995 Ac. Sawmill



NIFC  
 Online Maps

- United States Forest Service (USFS)
- USFS - Wilderness
- 5 - High Degree Of User Comfort
- 4 - Moderate Degree Of User Comfort
- 3 - Suitable For Passenger Cars
- 2 - High Clearance Vehicles
- 1 - CLOSED
- State Highway
- Dip Site
- Drop Point
- Helispot
- Mobile Weather Unit
- Repeater
- Division Break
- One Break
- Mileposts
- Private

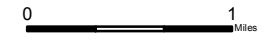
**Locator Map**



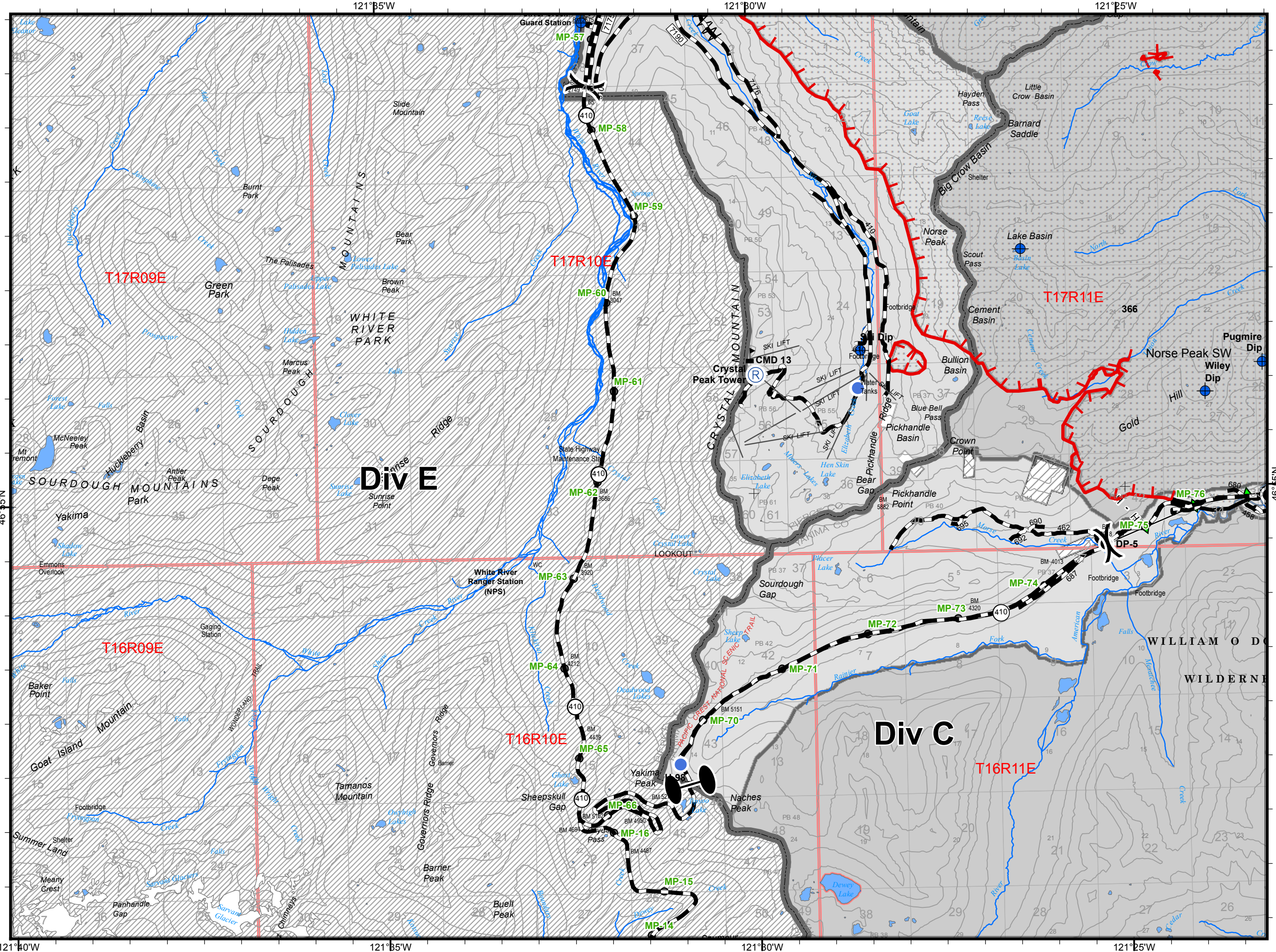


**Norse Peak**  
 WA-OWF-000365  
**Norse Peak SW**  
 Division Map 9/15/2017

52,502 Ac. Norse Peak  
 2,946 Ac. American  
 995 Ac. Sawmill

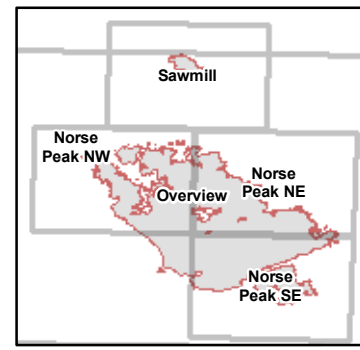


NIFC  
 Online Maps



- United States Forest Service (USFS)
- Mount Rainier National Park
- USFS - Wilderness
- 5 - High Degree Of User Comfort
- 4 - Moderate Degree Of User Comfort
- 3 - Suitable For Passenger Cars
- 2 - High Clearance Vehicles
- 1 - CLOSED
- State Highway
- Dip Site
- Drop Point
- Helispot
- Mileposts
- Private
- Repeater
- Value at Risk
- Division Break
- One Break

**Locator Map**

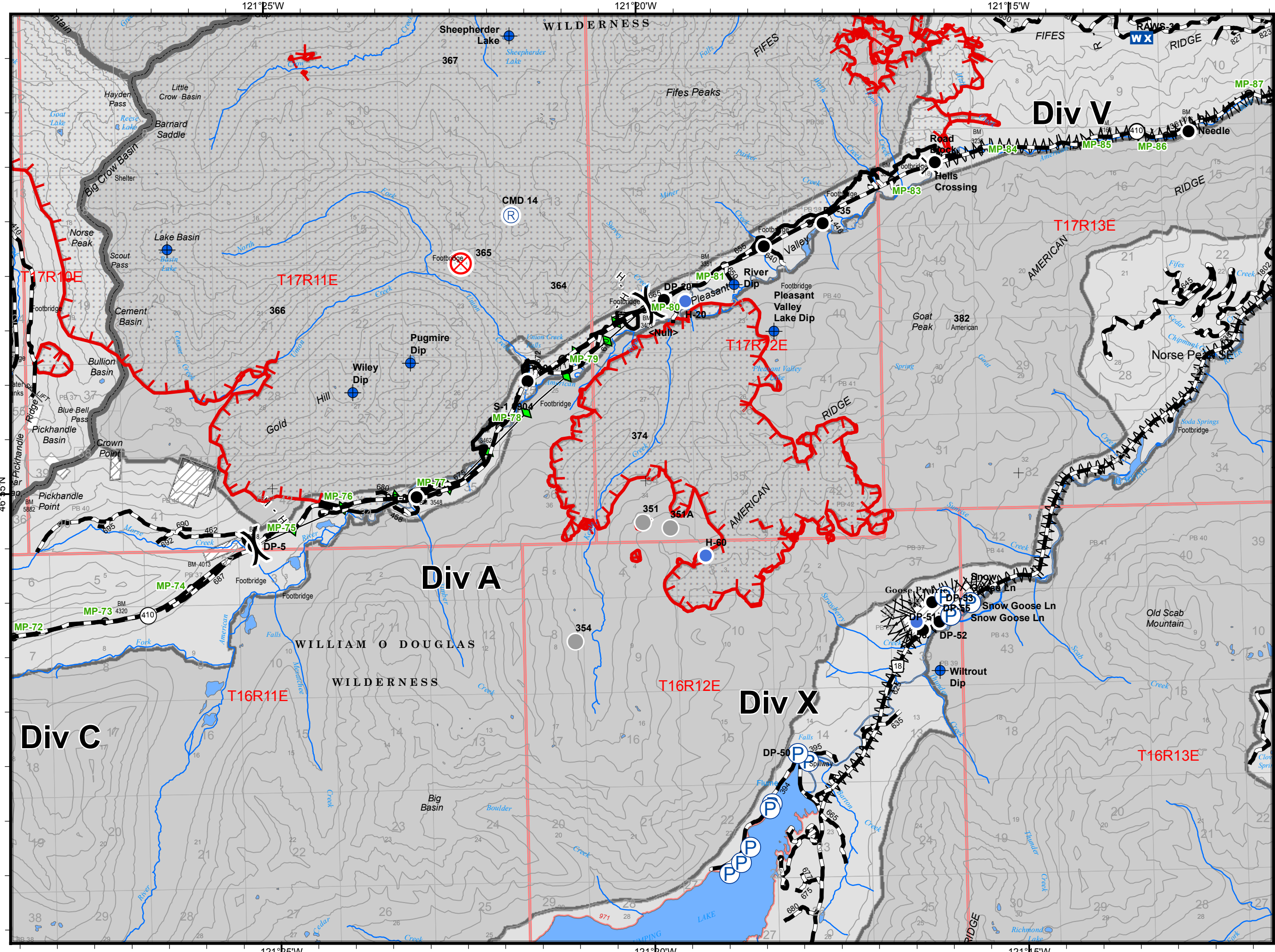


121°40'W 121°45'W 121°50'W 121°55'W 121°00'W 121°05'W 121°10'W 121°15'W

46°15'N

46°15'N





**Norse Peak**  
 WA-OWF-000365  
**Norse Peak SE**  
 Division Map 9/15/2017

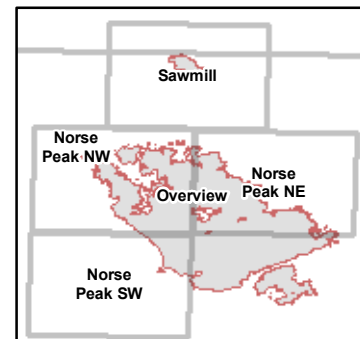
52,502 Ac. Norse Peak  
 2,946 Ac. American  
 995 Ac. Sawmill



NIFC  
 Online Maps

- United States Forest Service (USFS)
- USFS - Wilderness
- 5 - High Degree Of User Comfort
- 4 - Moderate Degree Of User Comfort
- 3 - Suitable For Passenger Cars
- 2 - High Clearance Vehicles
- 1 - ICLOSED
- State Highway
- Road Closure
- Dip Site
- Drop Point
- Fire Origin
- Helispot
- WX Mobile Weather Unit
- Pump
- Repeater
- Other
- Division Break
- Mileposts
- Private

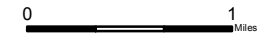
**Locator Map**



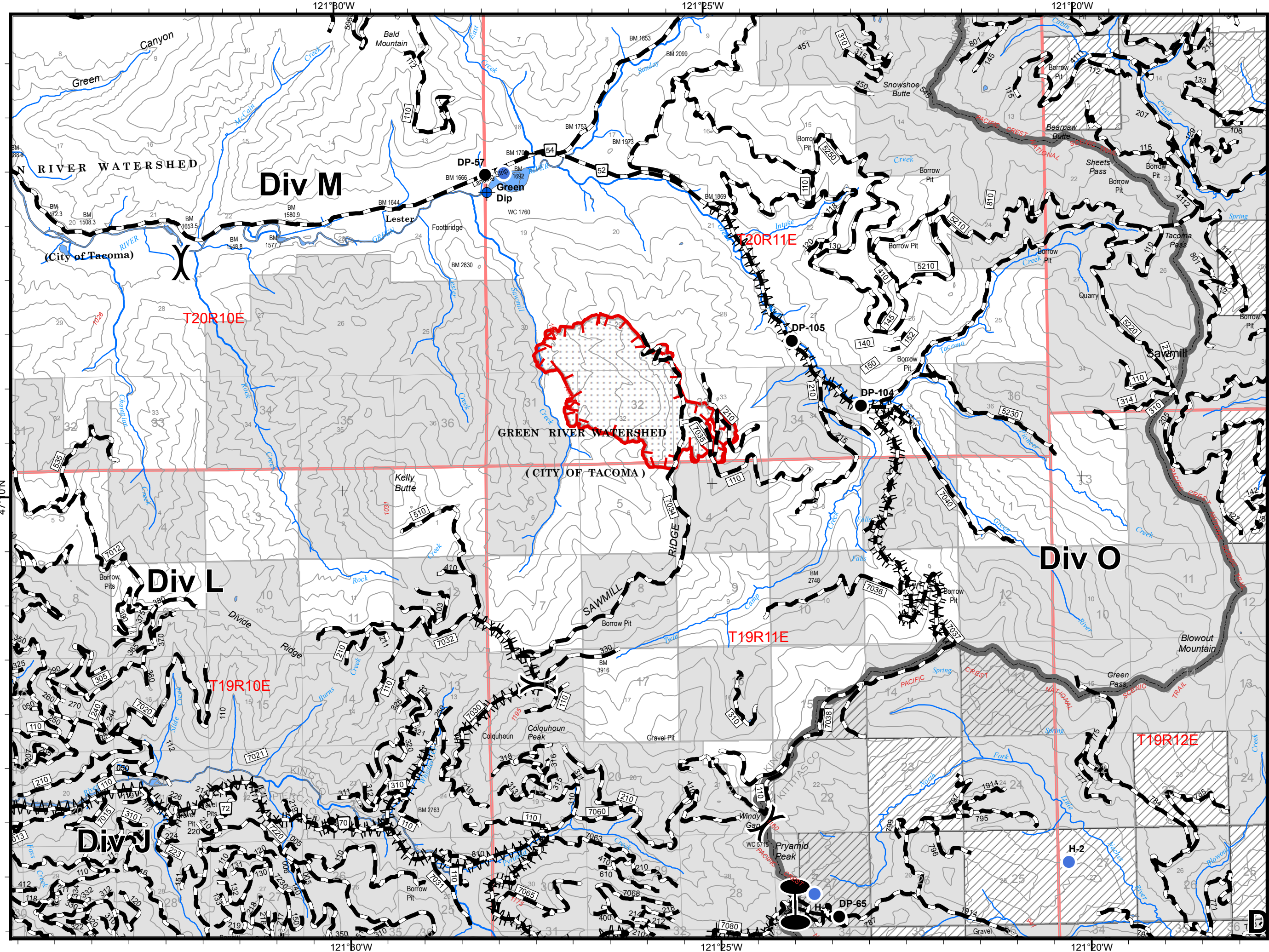


**Norse Peak**  
 WA-OWF-000365  
**Sawmill**  
 Division Map 9/15/2017

52,502 Ac. Norse Peak  
 2,946 Ac. American  
 995 Ac. Sawmill



NIFC  
 Online Maps



- United States Forest Service (USFS)
- 5 - High Degree Of User Comfort
- 4 - Moderate Degree Of User Comfort
- 3 - Suitable For Passenger Cars
- 2 - High Clearance Vehicles
- 1 - CLOSED
- State Highway
- Dip Site
- Drop Point
- Gate
- Hellspot
- Division Break
- Stone Break
- Private

**Locator Map**

