

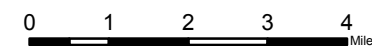
Norse Peak

WA-OWF-000365

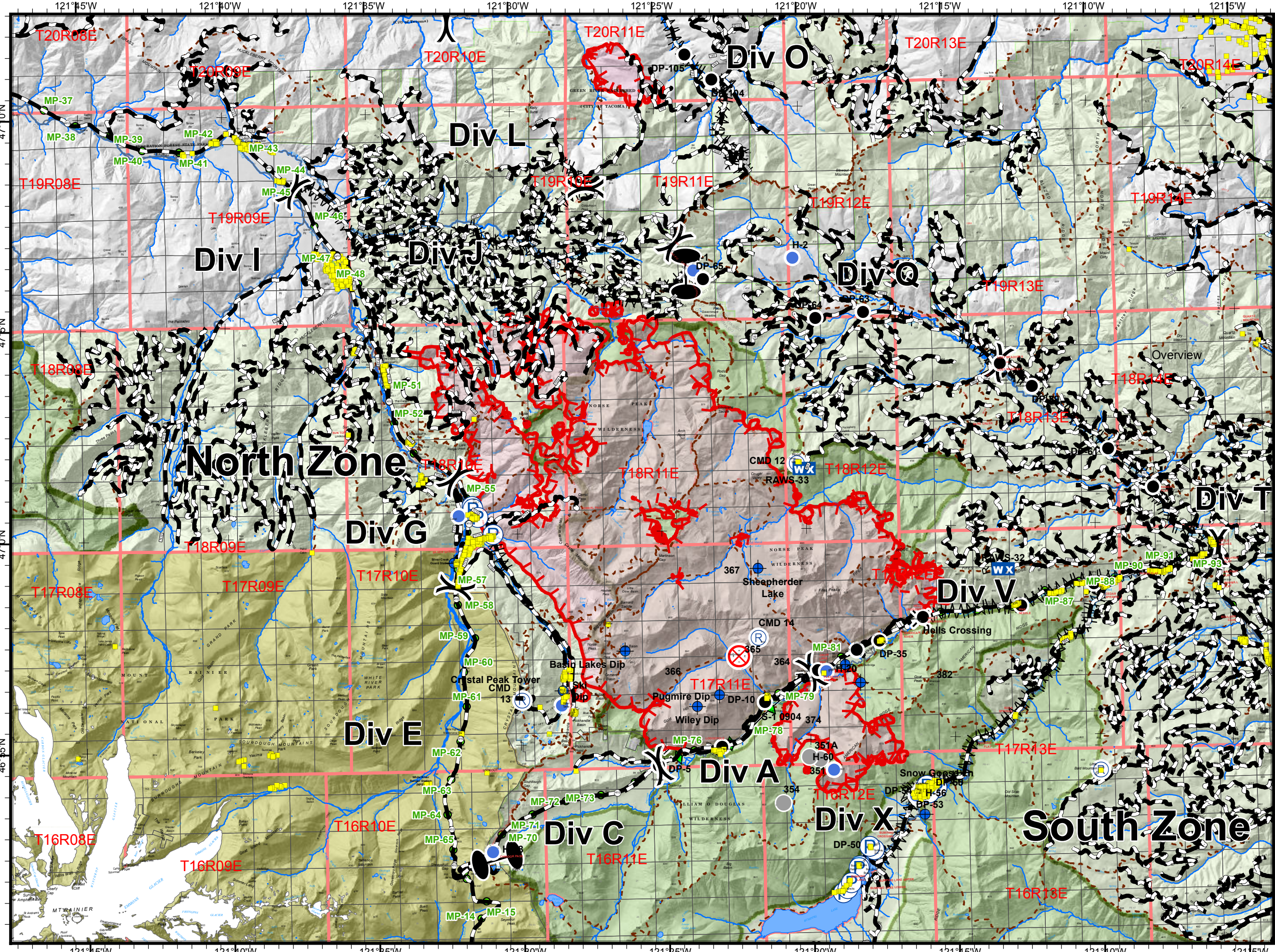
Overview

Division Map 9/15/2017

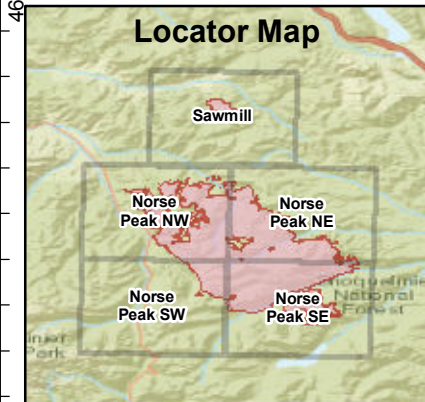
52,502 Ac. Norse Peak
2,946 Ac. American
995 Ac. Sawmill

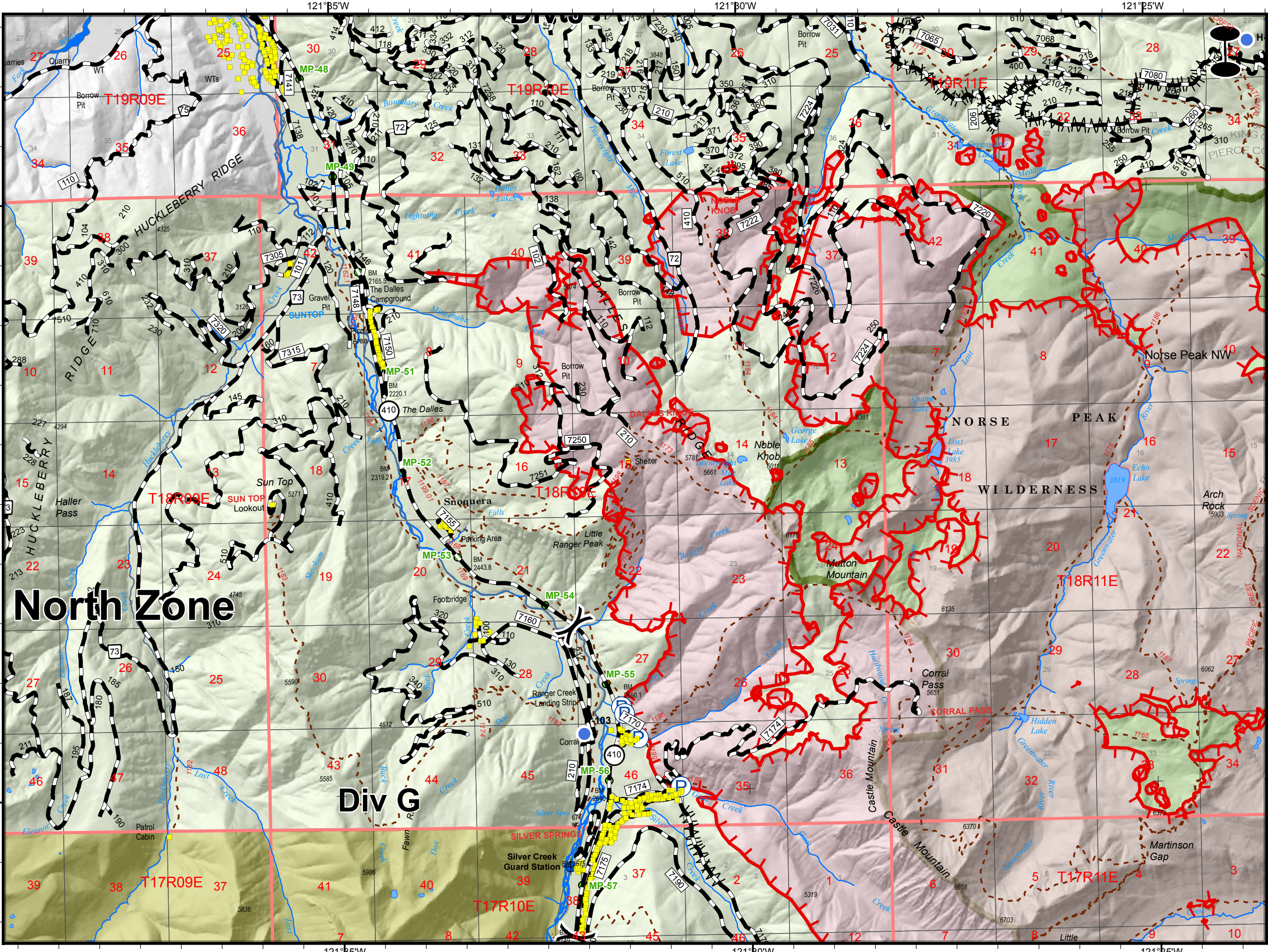


NIFC
Online Maps



- Mileposts
- 5 - High Degree Of User Comfort
- 4 - Moderate Degree Of User Comfort
- 3 - Suitable For Passenger Cars
- 2 - High Clearance Vehicles
- 1 - CLOSED
- United States Forest Service (USFS)
- Mount Rainier National Park
- Federal Government, Unknown
- USFS - Wilderness
- FS - Building Point
- WX Mobile Weather Unit
- P Pump
- R Repeater
- Value at Risk
- Other
- Division Break
- Zone Break
- X Road Closure
- Dip Site
- Drop Point
- ⊗ Fire Origin
- Gate
- Hellsite



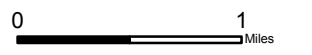


Norse Peak

WA-OWF-000365
Norse Peak NW

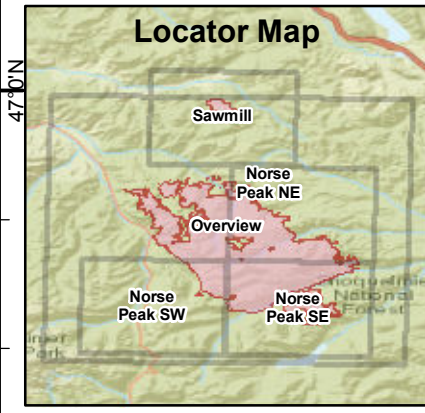
Division Map 9/15/2017

52,502 Ac. Norse Peak
 2,946 Ac. American
 995 Ac. Sawmill



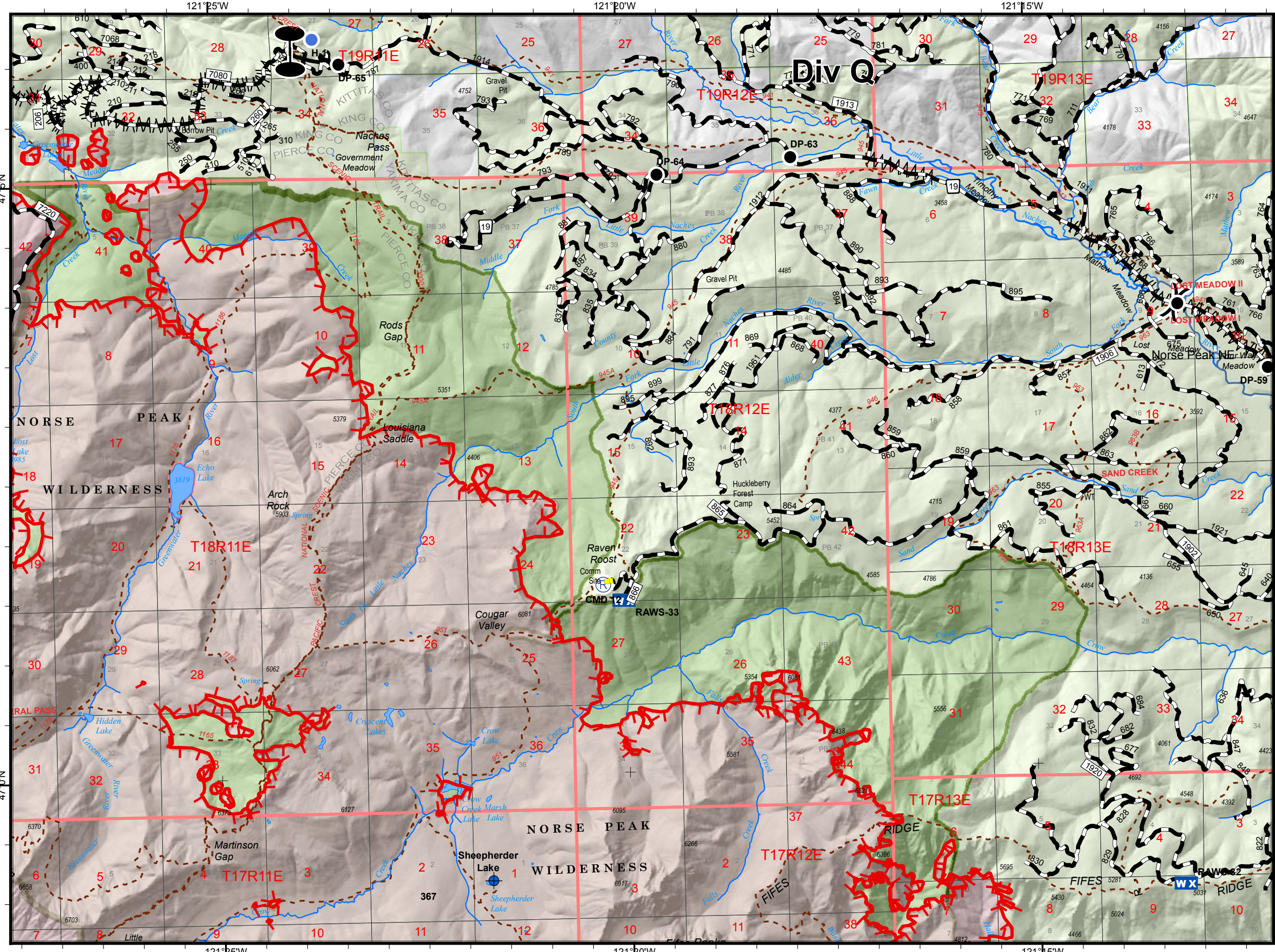
NIFC
 Online Maps

- Mileposts
- 5 - High Degree Of User Comfort
- 4 - Moderate Degree Of User Comfort
- 3 - Suitable For Passenger Cars
- 2 - High Clearance Vehicles
- 1 - CLOSED
- United States Forest Service (USFS)
- Mount Rainier National Park
- USFS - Wilderness
- FSTopo_Building_Point
- Dip Site
- Drop Point
- Hellsport
- Pump
- Division Break
- Zone Break



North Zone

Div G

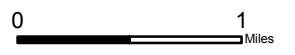


Norse Peak

WA-OWF-000365
Norse Peak NE

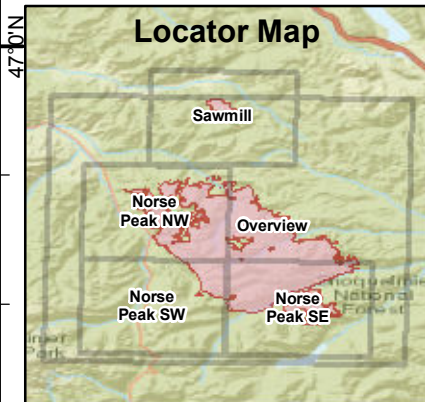
Division Map 9/15/2017

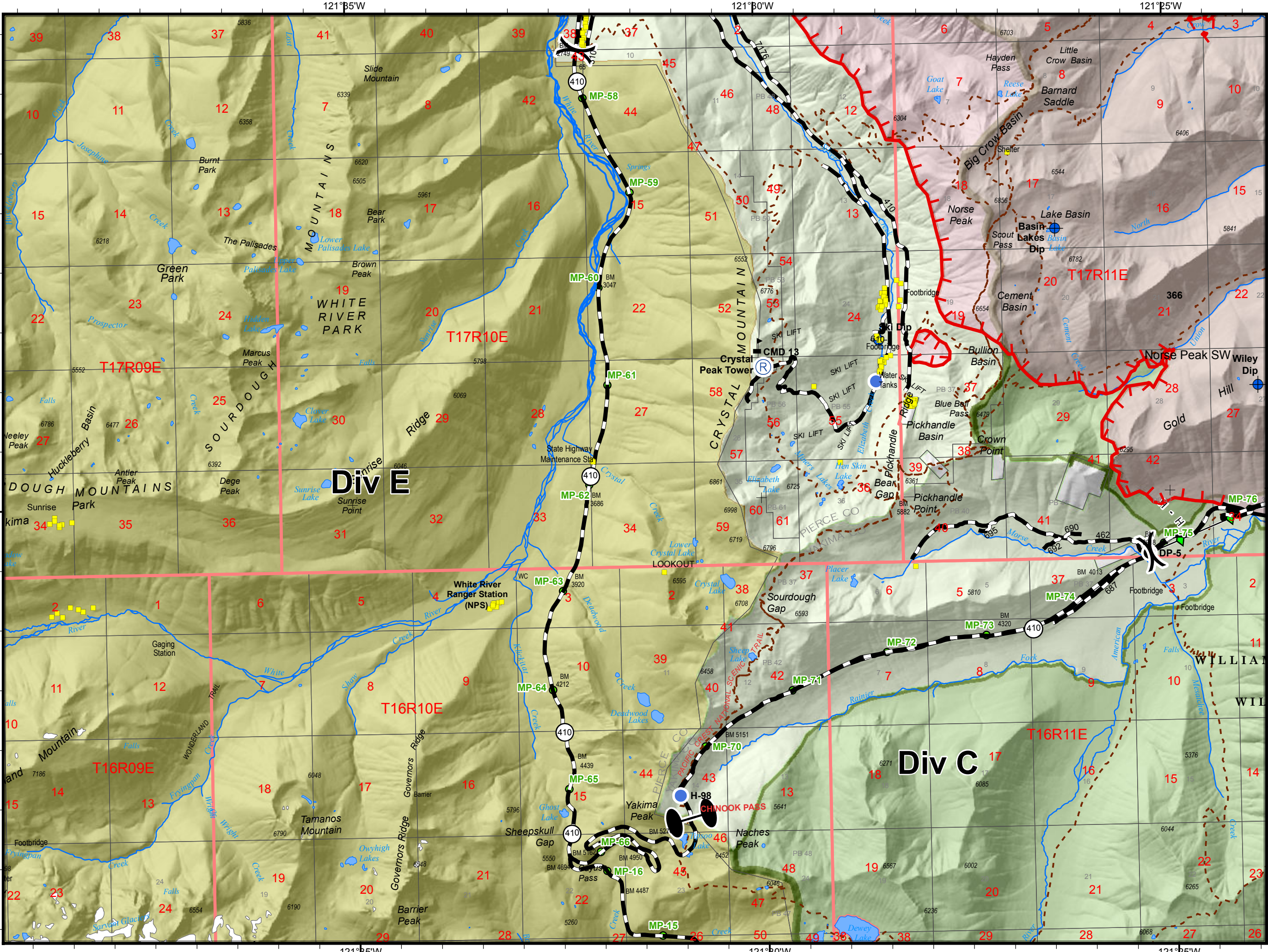
52,502 Ac. Norse Peak
 2,946 Ac. American
 995 Ac. Sawmill



NIFC
 Online Maps

- 4 - Moderate Degree Of User Comfort
- 3 - Suitable For Passenger Cars
- 2 - High Clearance Vehicles
- 1 - ICLOSED
- United States Forest Service (USFS)
- USFS - Wilderness
- FSTopo_Building_Point
- Dip Site
- Drop Point
- Hellsport
- WX Mobile Weather Unit
- Repeater
- Division Break
- Zone Break



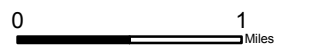


Norse Peak

WA-OWF-000365
Norse Peak SW

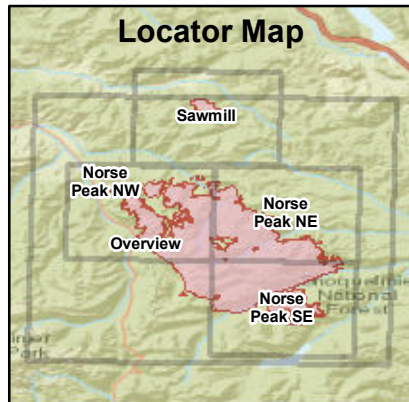
Division Map 9/15/2017

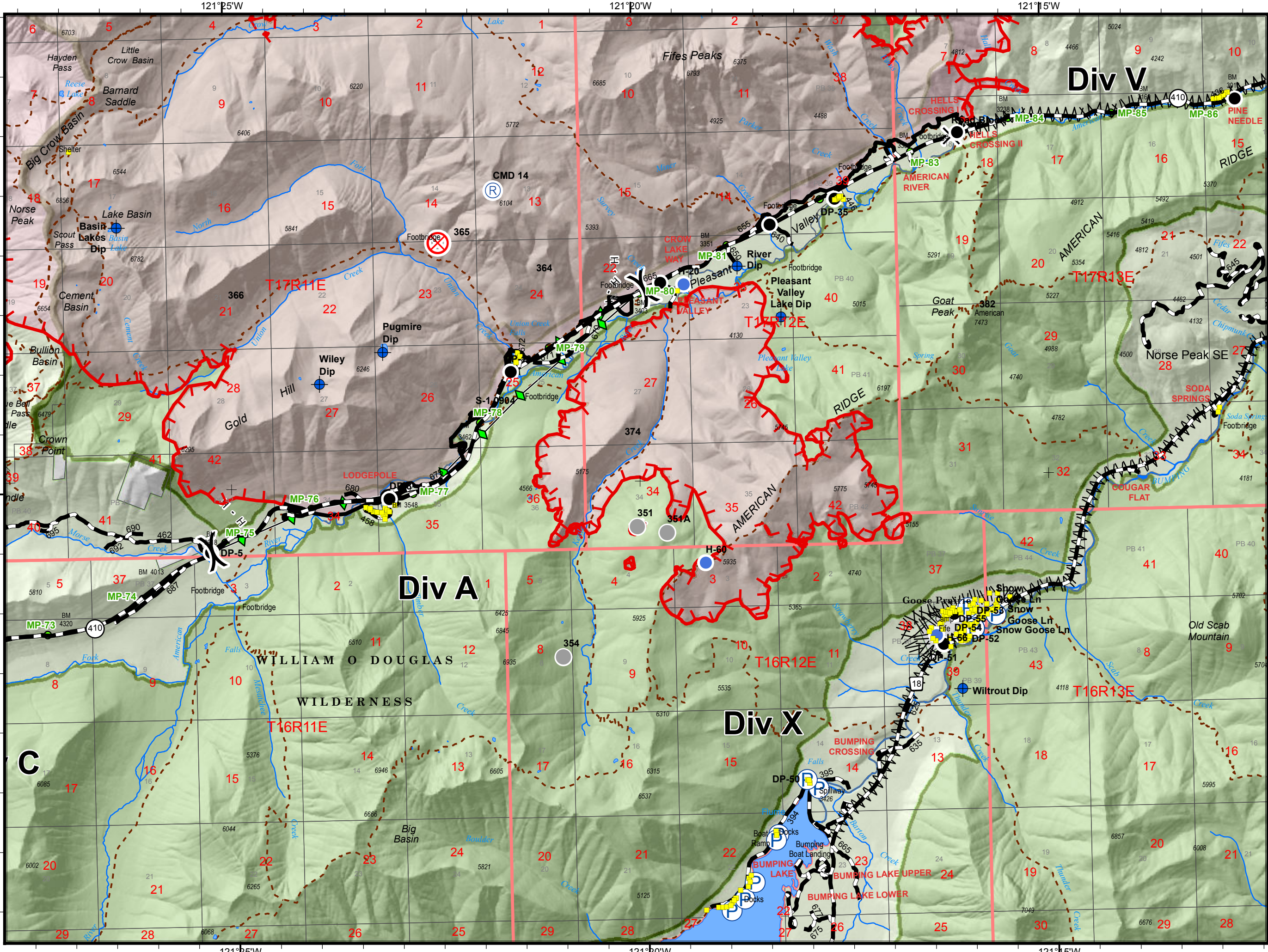
52,502 Ac. Norse Peak
 2,946 Ac. American
 995 Ac. Sawmill



NIFC
 Online Maps

- Mileposts
- 5 - High Degree Of User Comfort
- 3 - Suitable For Passenger Cars
- 2 - High Clearance Vehicles
- 1 - CLOSED
- United States Forest Service (USFS)
- Mount Rainier National Park
- USFS - Wilderness
- FSTopo_Building_Point
- Dip Site
- Drop Point
- Hellsport
- Repeater
- Value at Risk
- Division Break
- Zone Break



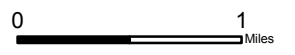


Norse Peak

WA-OWF-000365
Norse Peak SE

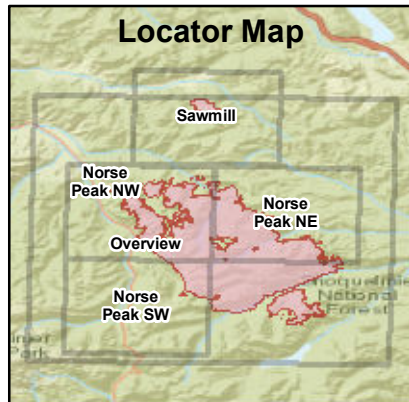
Division Map 9/15/2017

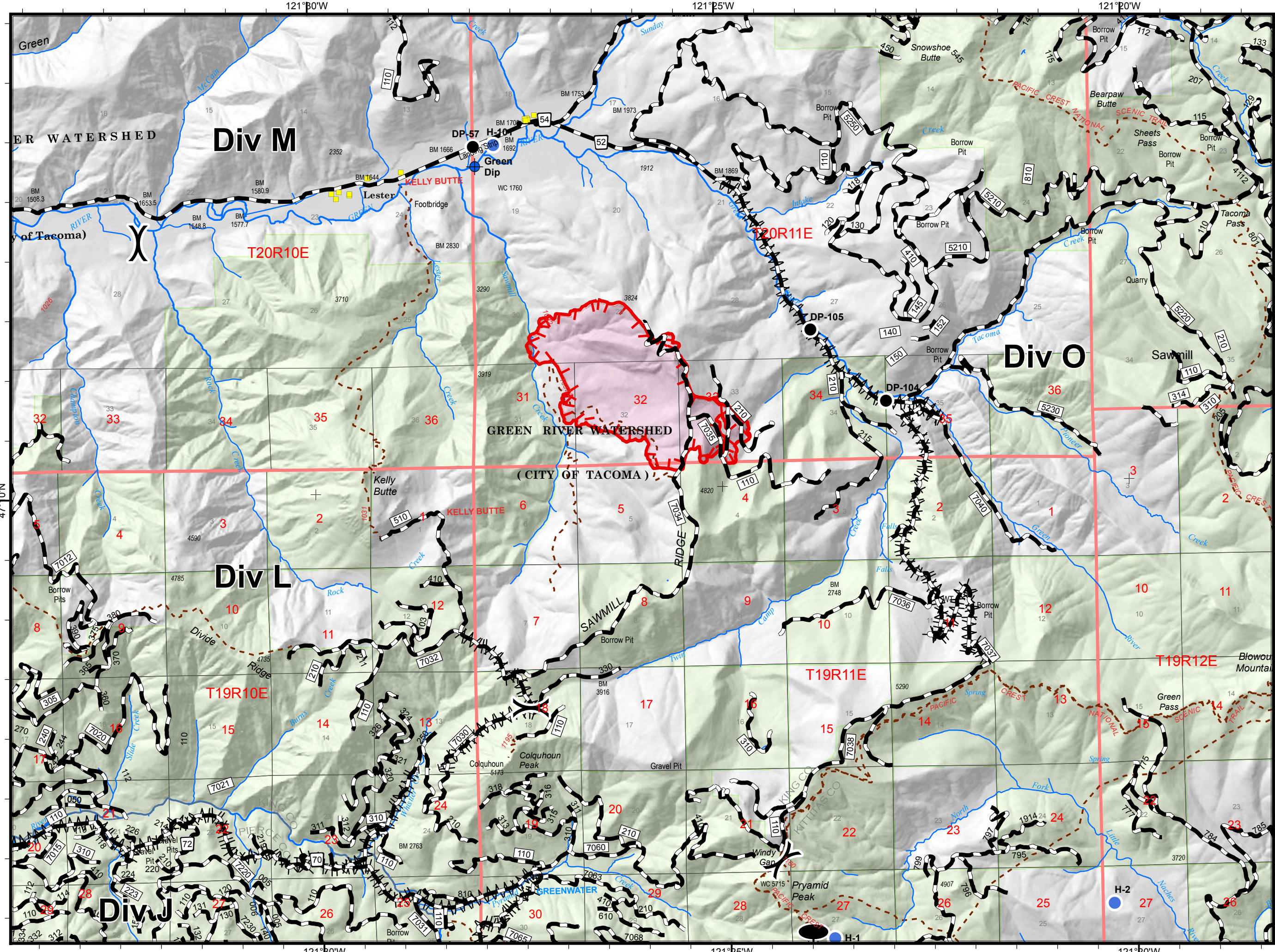
52,502 Ac. Norse Peak
 2,946 Ac. American
 995 Ac. Sawmill



NIFC
 Online Maps

- Mileposts
- 5 - High Degree of User Comfort
- 4 - Moderate Degree of User Comfort
- 3 - Suitable For Passenger Cars
- 2 - High Clearance Vehicles
- 1 - i-CLOSED
- United States Forest Service (USFS)
- USFS - Wilderness
- FSTopo_Building_Point
- Dip Site
- Drop Point
- Fire Origin
- HeliSpot
- Pump
- Repeater
- Other
- Road Closure
- Division Break





Norse Peak

WA-OWF-000365

Sawmill

Division Map 9/15/2017

52,502 Ac. Norse Peak
2,946 Ac. American
995 Ac. Sawmill



NIFC
Online Maps

- 5 - High Degree Of User Comfort
- 4 - Moderate Degree Of User Comfort
- 3 - Suitable For Passenger Cars
- 2 - High Clearance Vehicles
- 1 - CLOSED
- United States Forest Service (USFS)
- FSTopo_Building_Point
- Dip Site
- Drop Point
- Gate
- Heliport
- X Division Break
- Zone Break

