

Norse Peak
 WA-OWF-000365
Overview
 Division Map 9/16/2017

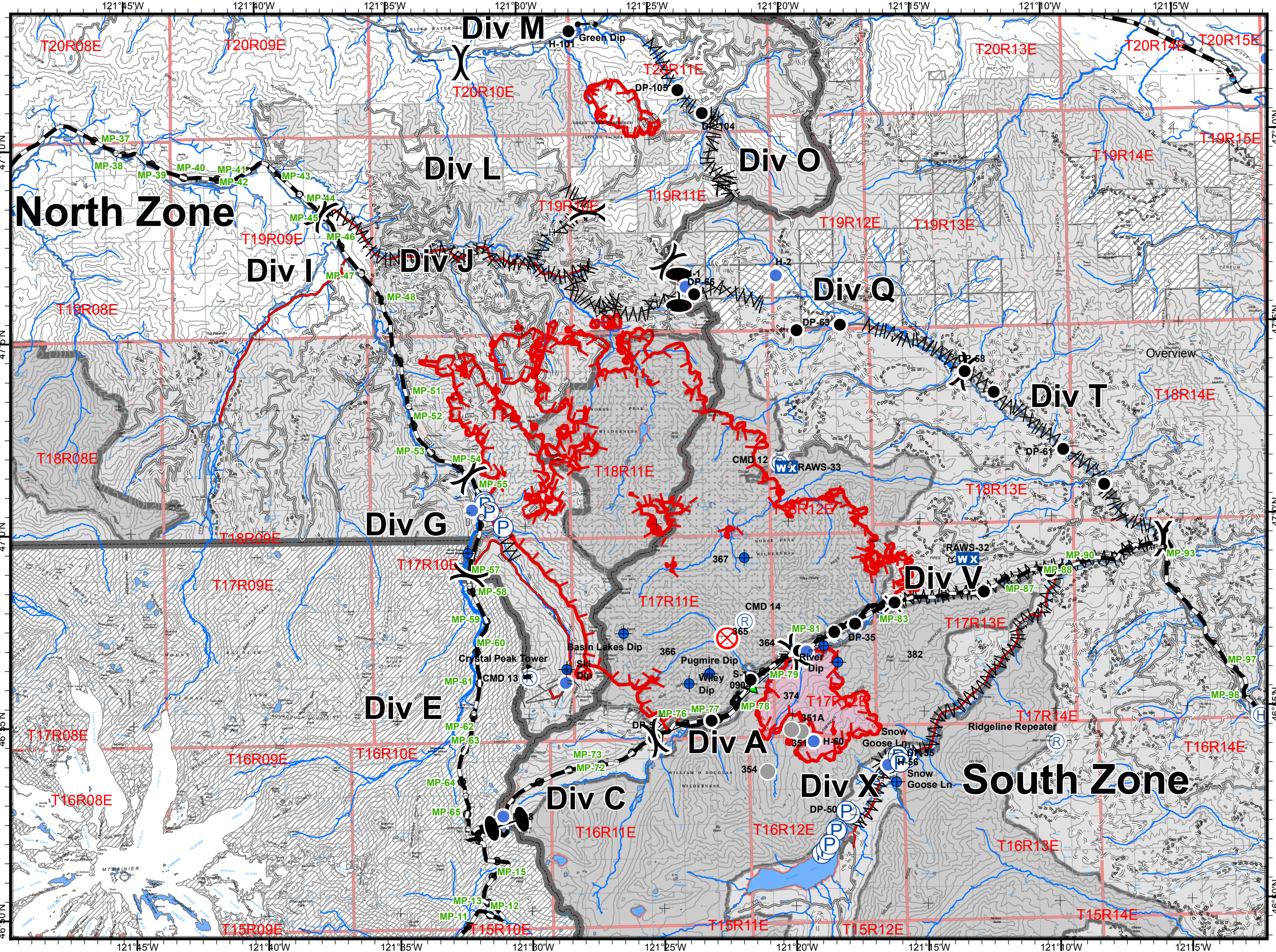
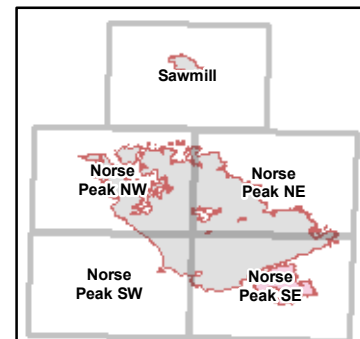
52,502 Ac. Norse Peak
 2,946 Ac. American
 995 Ac. Sawmill



NIFC
 Online Maps

- United States Forest Service (USFS)
- Mount Rainier National Park
- USFS - Wilderness
- 5 - High Degree Of User Comfort
- 4 - Moderate Degree Of User Comfort
- 3 - Suitable For Passenger Cars
- 2 - High Clearance Vehicles
- 1 - iCLOSED
- Uncontrolled Fire Edge
- Completed Line
- Completed Hand Line
- R Road as Completed Line
- Line Break Completed
- Completed Plow Line
- Road Closure
- Dip Site
- Drop Point
- Fire Origin
- Gate
- Helibase
- Helispot
- WX Mobile Weather Unit
- Pump
- Repeater
- Value at Risk
- Other
- Division Break
- Zone Break

Locator Map



121°15'W 121°10'W 121°05'W 121°00'W 121°05'W 121°10'W 121°15'W

T20R08E T20R09E T20R10E T20R11E T20R13E T20R14E T20R15E

MP-37 MP-38 MP-39 MP-40 MP-41 MP-42 MP-43 MP-44 MP-45 MP-46 MP-47

MP-48 MP-51 MP-52 MP-53 MP-54 MP-55 MP-57 MP-58 MP-59 MP-60 MP-61

MP-62 MP-63 MP-64 MP-65 MP-72 MP-73 MP-76 MP-77 MP-78 MP-79 MP-81

MP-83 MP-87 MP-88 MP-90 MP-93 MP-97 MP-98

T19R08E T19R09E T19R10E T19R11E T19R12E T19R13E T19R14E T19R15E

T18R08E T18R09E T18R10E T18R11E T18R12E T18R13E T18R14E

T17R08E T17R09E T17R10E T17R11E T17R12E T17R13E T17R14E

T16R08E T16R09E T16R10E T16R11E T16R12E T16R13E T16R14E

T15R08E T15R09E T15R10E T15R11E T15R12E T15R14E

47°10'N 47°5'N 47°0'N 46°55'N 46°50'N

121°15'W 121°10'W 121°05'W 121°00'W 121°05'W 121°10'W 121°15'W

121°15'W 121°10'W 121°05'W 121°00'W 121°05'W 121°10'W 121°15'W

121°15'W 121°10'W 121°05'W 121°00'W 121°05'W 121°10'W 121°15'W

121°15'W 121°10'W 121°05'W 121°00'W 121°05'W 121°10'W 121°15'W

121°15'W 121°10'W 121°05'W 121°00'W 121°05'W 121°10'W 121°15'W

121°15'W 121°10'W 121°05'W 121°00'W 121°05'W 121°10'W 121°15'W

121°15'W 121°10'W 121°05'W 121°00'W 121°05'W 121°10'W 121°15'W

121°15'W 121°10'W 121°05'W 121°00'W 121°05'W 121°10'W 121°15'W

121°15'W 121°10'W 121°05'W 121°00'W 121°05'W 121°10'W 121°15'W

121°15'W 121°10'W 121°05'W 121°00'W 121°05'W 121°10'W 121°15'W

121°15'W 121°10'W 121°05'W 121°00'W 121°05'W 121°10'W 121°15'W

121°15'W 121°10'W 121°05'W 121°00'W 121°05'W 121°10'W 121°15'W

121°15'W 121°10'W 121°05'W 121°00'W 121°05'W 121°10'W 121°15'W

121°15'W 121°10'W 121°05'W 121°00'W 121°05'W 121°10'W 121°15'W

121°15'W 121°10'W 121°05'W 121°00'W 121°05'W 121°10'W 121°15'W

121°15'W 121°10'W 121°05'W 121°00'W 121°05'W 121°10'W 121°15'W

121°15'W 121°10'W 121°05'W 121°00'W 121°05'W 121°10'W 121°15'W

121°15'W 121°10'W 121°05'W 121°00'W 121°05'W 121°10'W 121°15'W

121°15'W 121°10'W 121°05'W 121°00'W 121°05'W 121°10'W 121°15'W

121°15'W 121°10'W 121°05'W 121°00'W 121°05'W 121°10'W 121°15'W

121°15'W 121°10'W 121°05'W 121°00'W 121°05'W 121°10'W 121°15'W

121°15'W 121°10'W 121°05'W 121°00'W 121°05'W 121°10'W 121°15'W

121°15'W 121°10'W 121°05'W 121°00'W 121°05'W 121°10'W 121°15'W

121°15'W 121°10'W 121°05'W 121°00'W 121°05'W 121°10'W 121°15'W

121°15'W 121°10'W 121°05'W 121°00'W 121°05'W 121°10'W 121°15'W

121°15'W 121°10'W 121°05'W 121°00'W 121°05'W 121°10'W 121°15'W

121°15'W 121°10'W 121°05'W 121°00'W 121°05'W 121°10'W 121°15'W

121°15'W 121°10'W 121°05'W 121°00'W 121°05'W 121°10'W 121°15'W

121°15'W 121°10'W 121°05'W 121°00'W 121°05'W 121°10'W 121°15'W

121°15'W 121°10'W 121°05'W 121°00'W 121°05'W 121°10'W 121°15'W

121°15'W 121°10'W 121°05'W 121°00'W 121°05'W 121°10'W 121°15'W

121°15'W 121°10'W 121°05'W 121°00'W 121°05'W 121°10'W 121°15'W

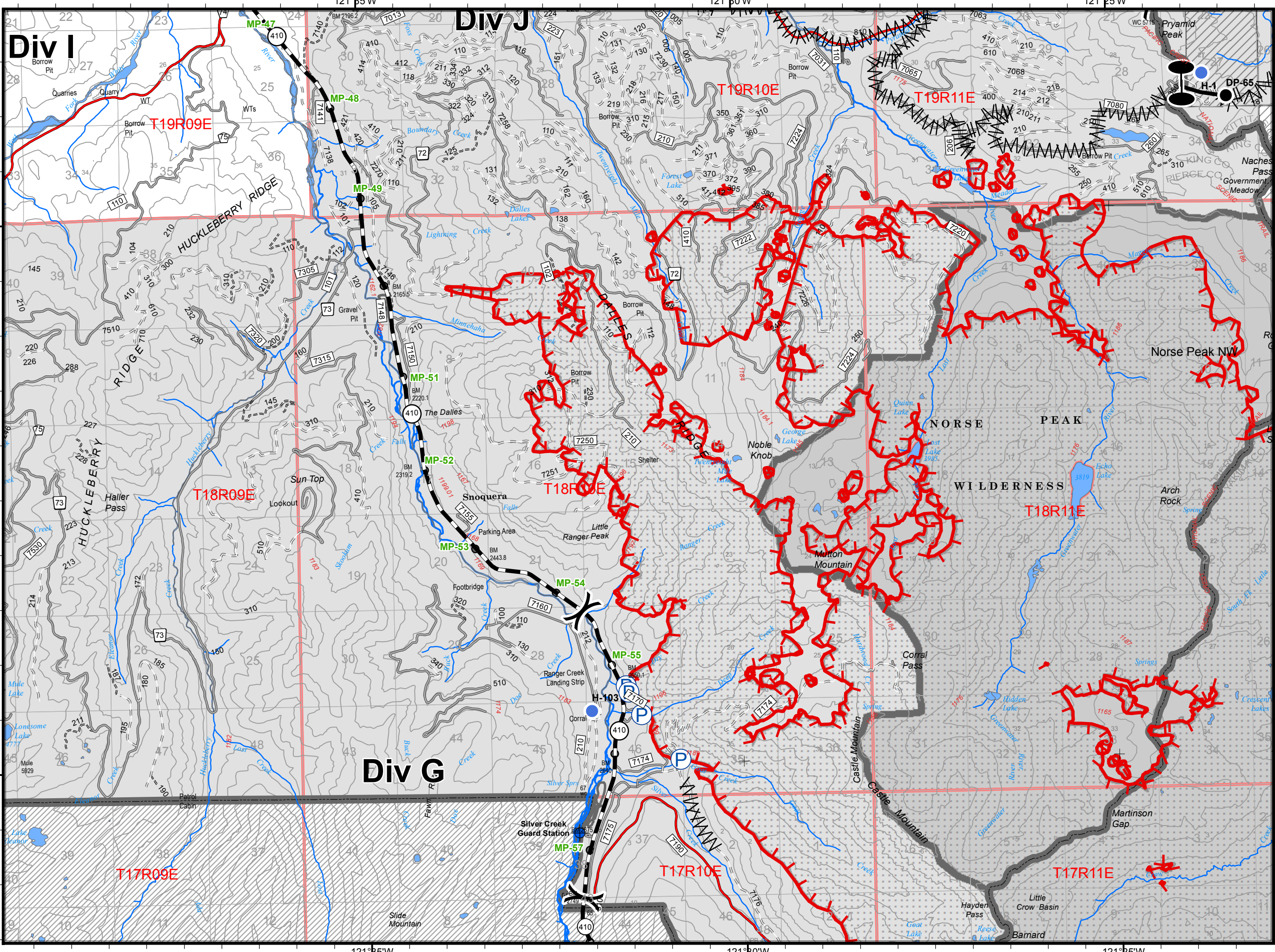
121°15'W 121°10'W 121°05'W 121°00'W 121°05'W 121°10'W 121°15'W

121°15'W 121°10'W 121°05'W 121°00'W 121°05'W 121°10'W 121°15'W

121°15'W 121°10'W 121°05'W 121°00'W 121°05'W 121°10'W 121°15'W

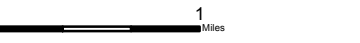
121°15'W 121°10'W 121°05'W 121°00'W 121°05'W 121°10'W 121°15'W

121°15'W 121°10'W 121°05'W 121°00'W 121°05'W 121°10'W 121°15'W



Norse Peak
 WA-OWF-000365
Norse Peak NW
 Division Map 9/16/2017

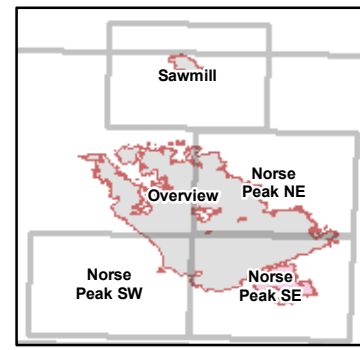
52,502 Ac. Norse Peak
 2,946 Ac. American
 995 Ac. Sawmill

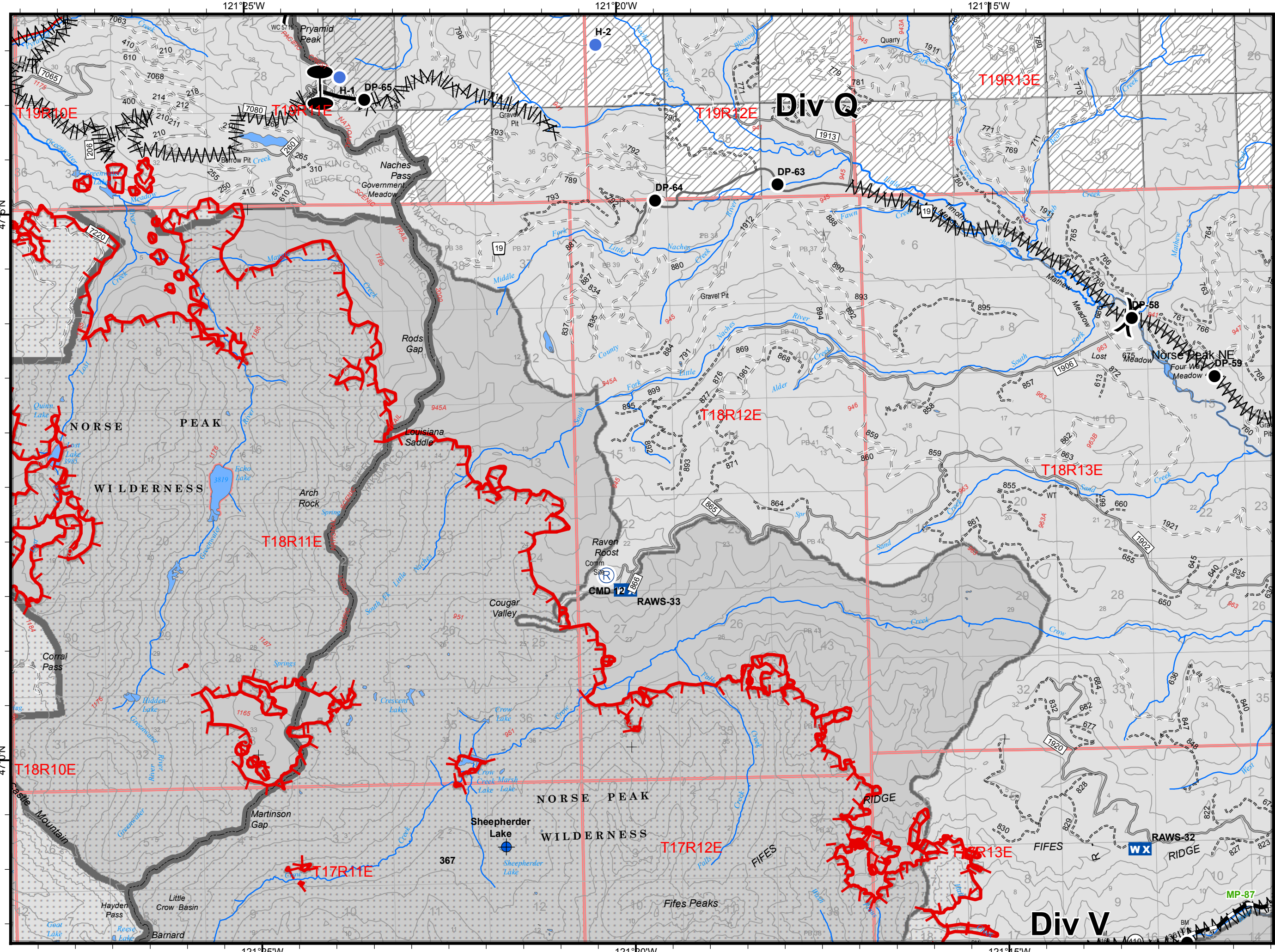


NIFC
 Online Maps

- United States Forest Service (USFS)
- Mount Rainier National Park
- USFS - Wilderness
- 5 - High Degree Of User Comfort
- 4 - Moderate Degree Of User Comfort
- 3 - Suitable For Passenger Cars
- 2 - High Clearance Vehicles
- 1 - CLOSED
- Uncontrolled Fire Edge
- Completed Line
- Line Break Completed
- Dip Site
- Drop Point
- Helispot
- Pump
- Division Break
- Zone Break

Locator Map





Norse Peak
 WA-OWF-000365
Norse Peak NE
 Division Map 9/16/2017

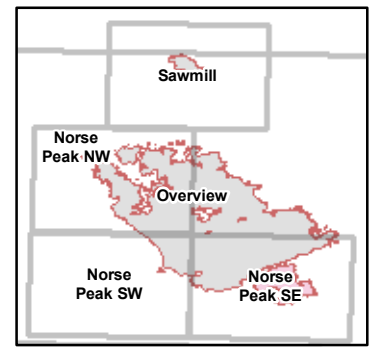
52,502 Ac. Norse Peak
 2,946 Ac. American
 995 Ac. Sawmill



NIFC
 Online Maps

- United States Forest Service (USFS)
- USFS - Wilderness
- 5 - High Degree Of User Comfort
- 4 - Moderate Degree Of User Comfort
- 3 - Suitable For Passenger Cars
- 2 - High Clearance Vehicles
- 1 - ICLOSED
- Uncontrolled Fire Edge
- Completed Line
- Road as Completed Line
- Line Break Completed
- Dip Site
- Drop Point
- Helispot
- WX Mobile Weather Unit
- Repeater
- Division Break
- Zone Break

Locator Map

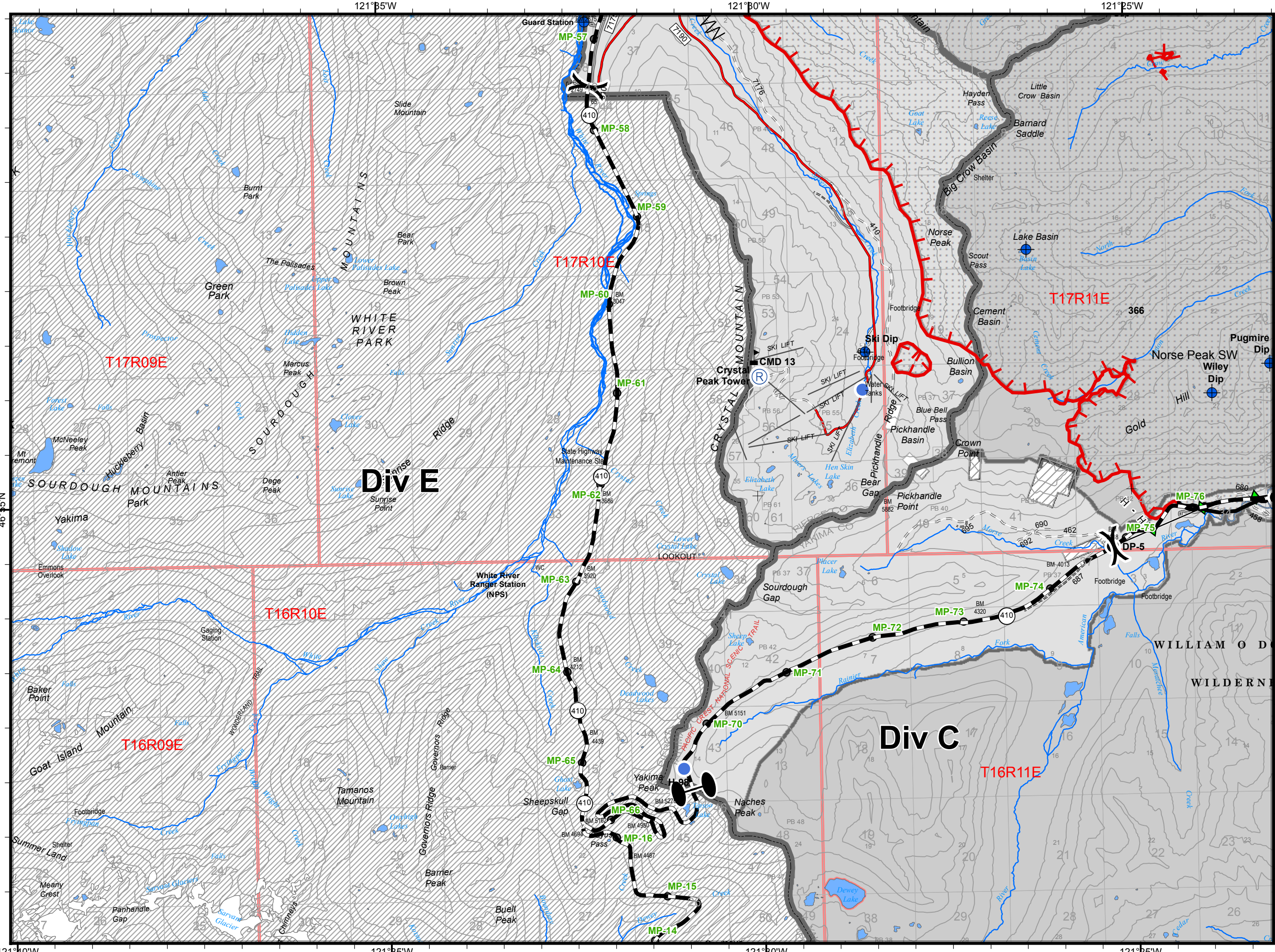


Norse Peak
 WA-OWF-000365
Norse Peak SW
 Division Map 9/16/2017

52,502 Ac. Norse Peak
 2,946 Ac. American
 995 Ac. Sawmill

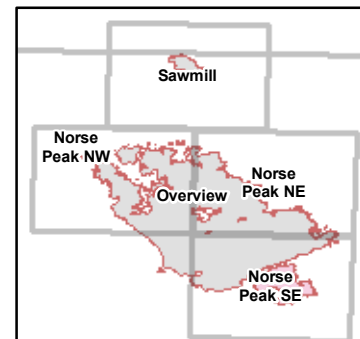


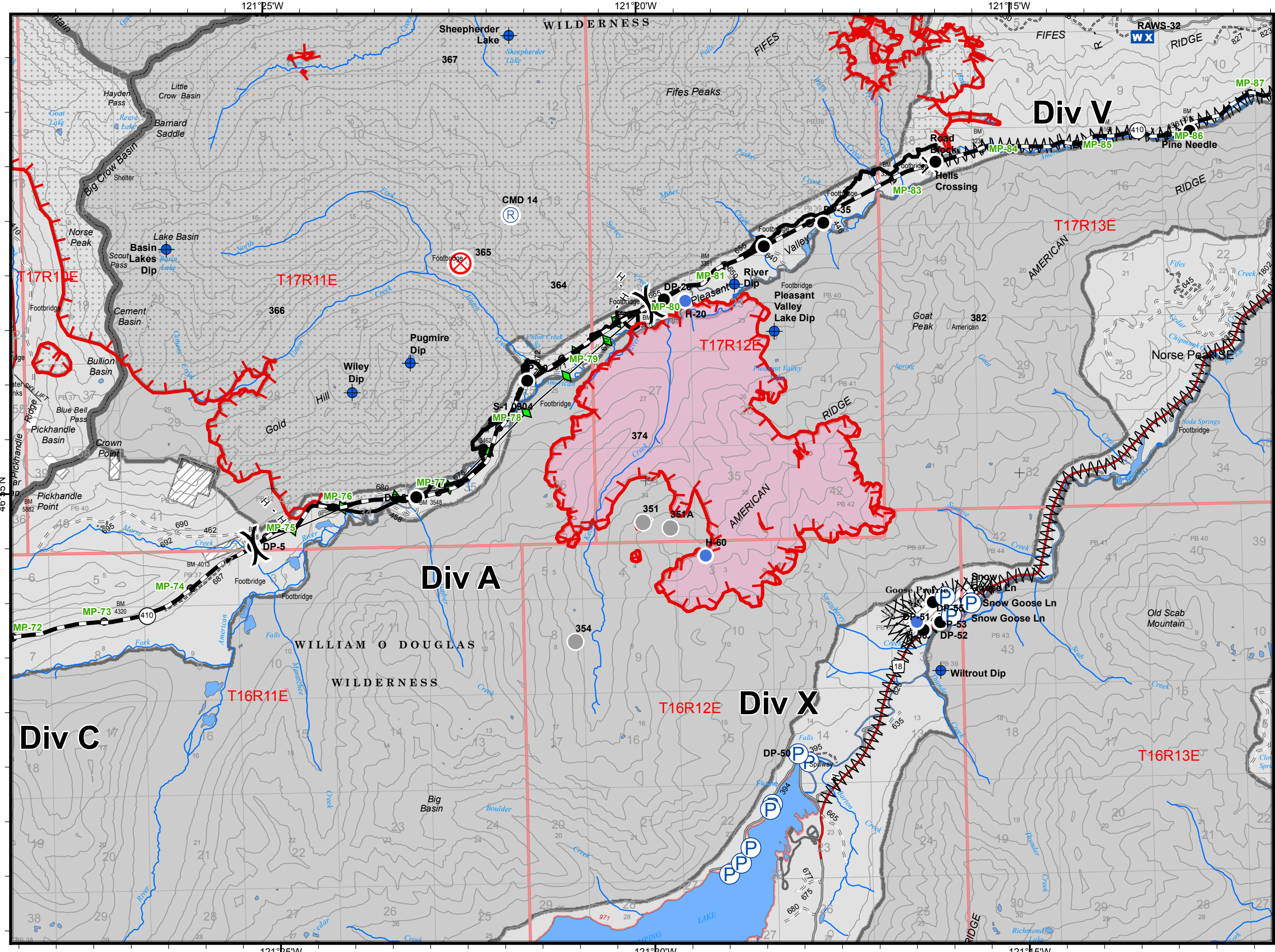
NIFC
 Online Maps



- United States Forest Service (USFS)
- Mount Rainier National Park
- USFS - Wilderness
- 5 - High Degree Of User Comfort
- 4 - Moderate Degree Of User Comfort
- 3 - Suitable For Passenger Cars
- 2 - High Clearance Vehicles
- 1 - CLOSED
- Uncontrolled Fire Edge
- Completed Line
- Completed Hand Line
- Line Break Completed
- Completed Plow Line
- Dip Site
- Drop Point
- Helispot
- Repeater
- Value at Risk
- Division Break
- Zone Break

Locator Map





Norse Peak
 WA-OWF-000365
Norse Peak SE
 Division Map 9/16/2017

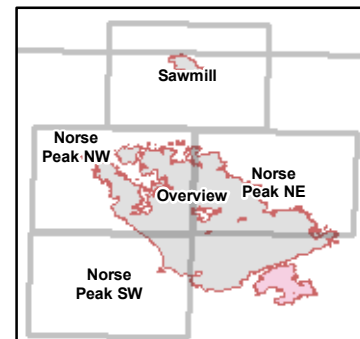
52,502 Ac. Norse Peak
 2,946 Ac. American
 995 Ac. Sawmill



NIFC
 Online Maps

- United States Forest Service (USFS)
- USFS - Wilderness
- 5 - High Degree Of User Comfort
- 4 - Moderate Degree Of User Comfort
- 3 - Suitable For Passenger Cars
- 2 - High Clearance Vehicles
- 1 - CLOSED
- Uncontrolled Fire Edge
- Completed Line
- Completed Hand Line
- R Road as Completed Line
- Line Break Completed
- Completed Plow Line
- Road Closure
- Dip Site
- Drop Point
- Fire Origin
- Hellspot
- WX Mobile Weather Unit
- Pump
- Repeater
- Other
- Division Break

Locator Map

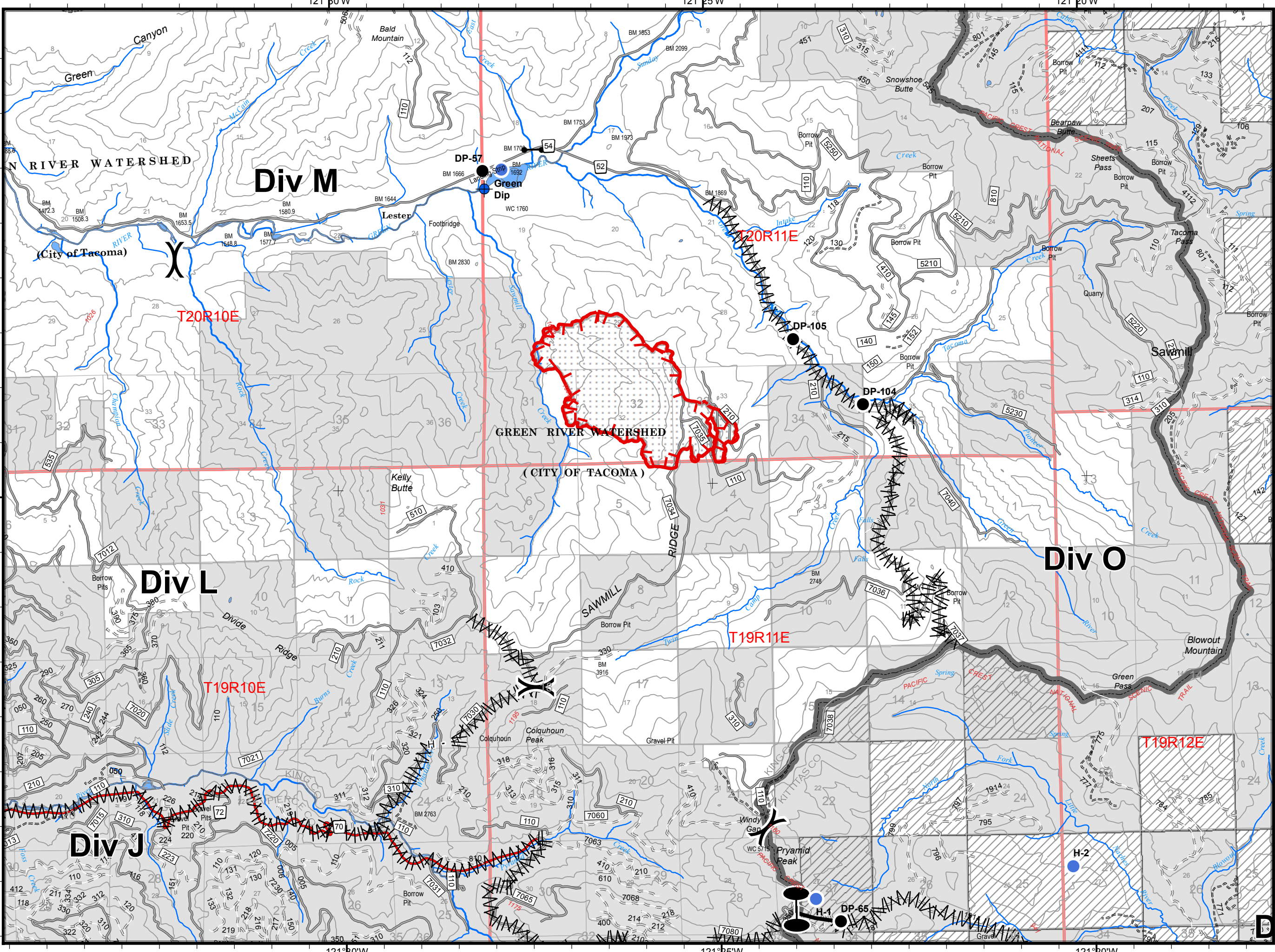


Norse Peak
 WA-OWF-000365
Sawmill
 Division Map 9/16/2017

52,502 Ac. Norse Peak
 2,946 Ac. American
 995 Ac. Sawmill



NIFC
 Online Maps



- United States Forest Service (USFS)
- 5 - High Degree Of User Comfort
- 4 - Moderate Degree Of User Comfort
- 3 - Suitable For Passenger Cars
- 2 - High Clearance Vehicles
- 1 - CLOSED
- Uncontrolled Fire Edge
- Completed Line
- Completed Hand Line
- Line Break Completed
- Dip Site
- Drop Point
- Gate
- Helispot
- Division Break
- Zone Break

Locator Map

