

Norse Peak

WA-OWF-000365

Div G

IAP Map 9/21/2017

52,056 Ac. Norse Peak
3,853 Ac. American
1,061 Ac. Sawmill

GIS Calculated 9/19/2017 @12:00

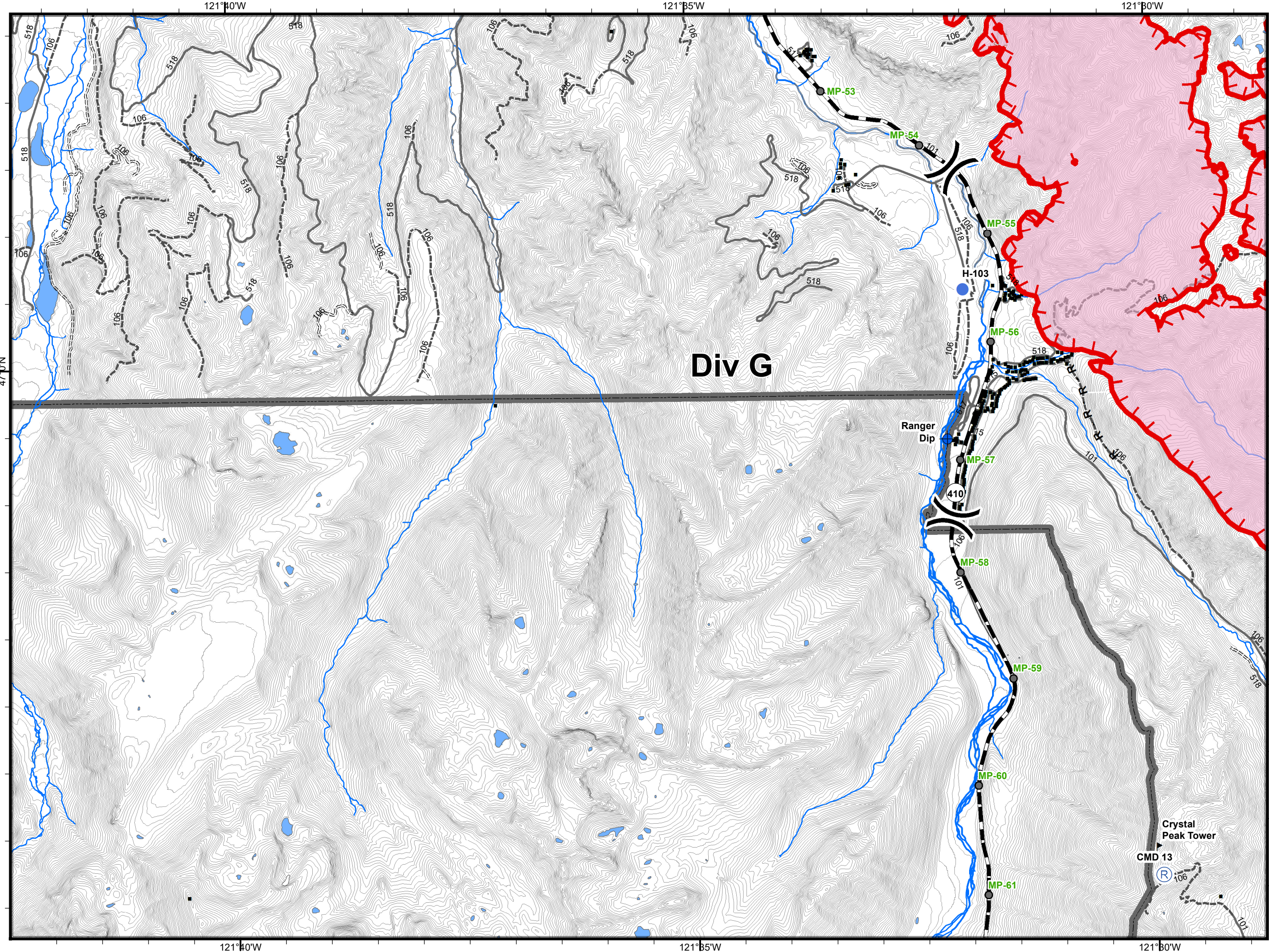


NIFC
Online Maps

- Dip Site
- Helispot
- Repeater
- Value at Risk
- Division Break



- Uncontrolled Fire Edge
- R - R - Road as Completed Line
- Fire Perimeter
- Structure
- Mileposts
- Administrative Boundary



Div G

Ranger Dip

Crystal Peak Tower

CMD 13

47°N

47°N

121°40'W

121°35'W

121°30'W

121°40'W

121°35'W

121°30'W

