

Norse Peak

WA-OWF-000365

Div J East

IAP Map 9/21/2017

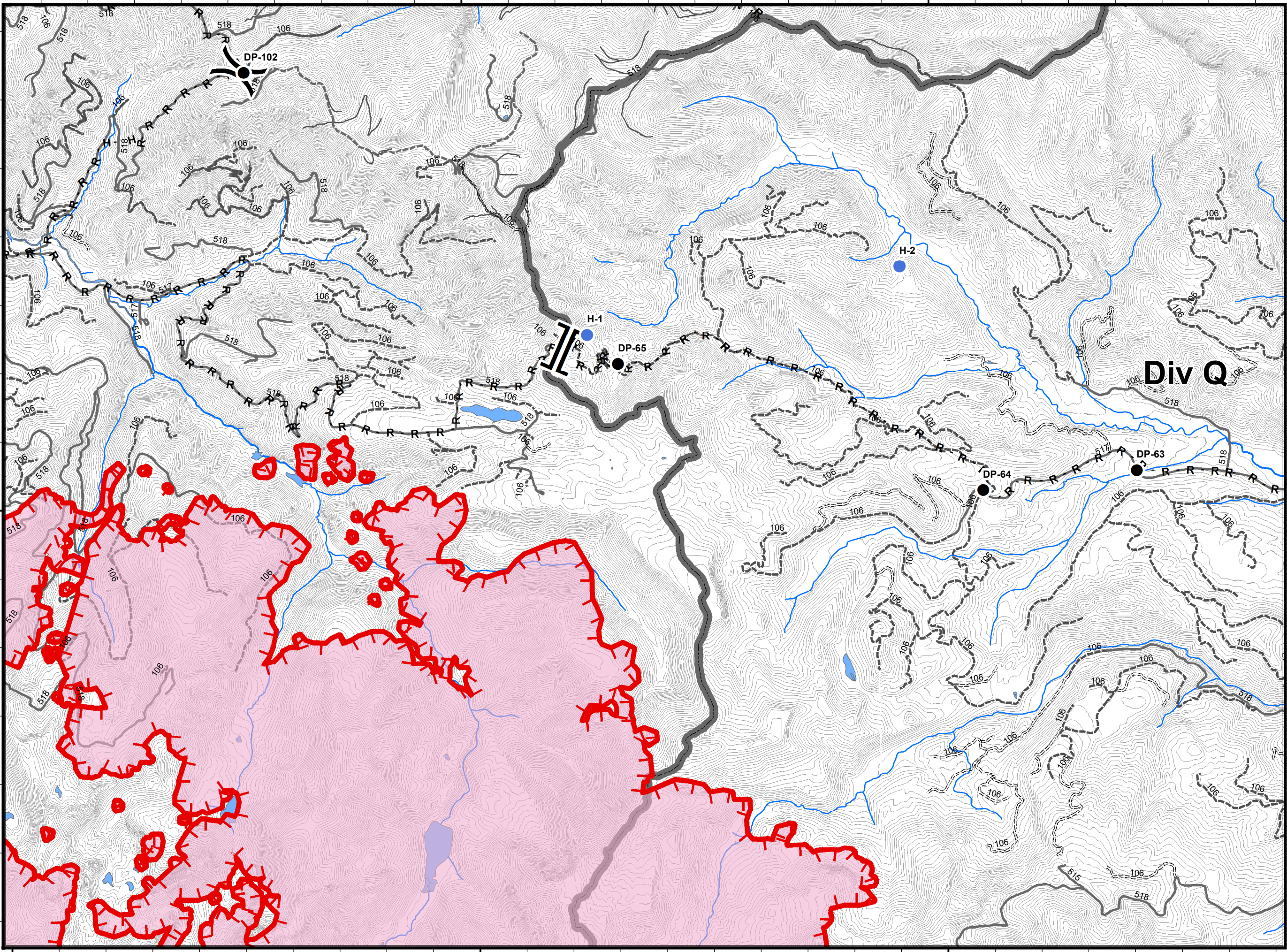
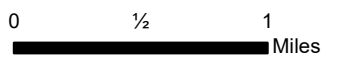
52,056 Ac. Norse Peak
3,853 Ac. American
1,061 Ac. Sawmill

GIS Calculated 9/19/2017 @12:00



NIFC
Online Maps

- Drop Point
- Helispot
- () Division Break
- [] Branch Break
- ┌─┐ Uncontrolled Fire Edge
- H - H - Completed Hand Line
- R - R - Road as Completed Line
- Fire Perimeter
- Administrative Boundary



47°N
47°N
47°N

121°25'W

121°20'W

121°30'W

121°25'W

121°20'W