

121°0'W

121°5'W

Norse Peak

WA-OWF-000365

Sawmill

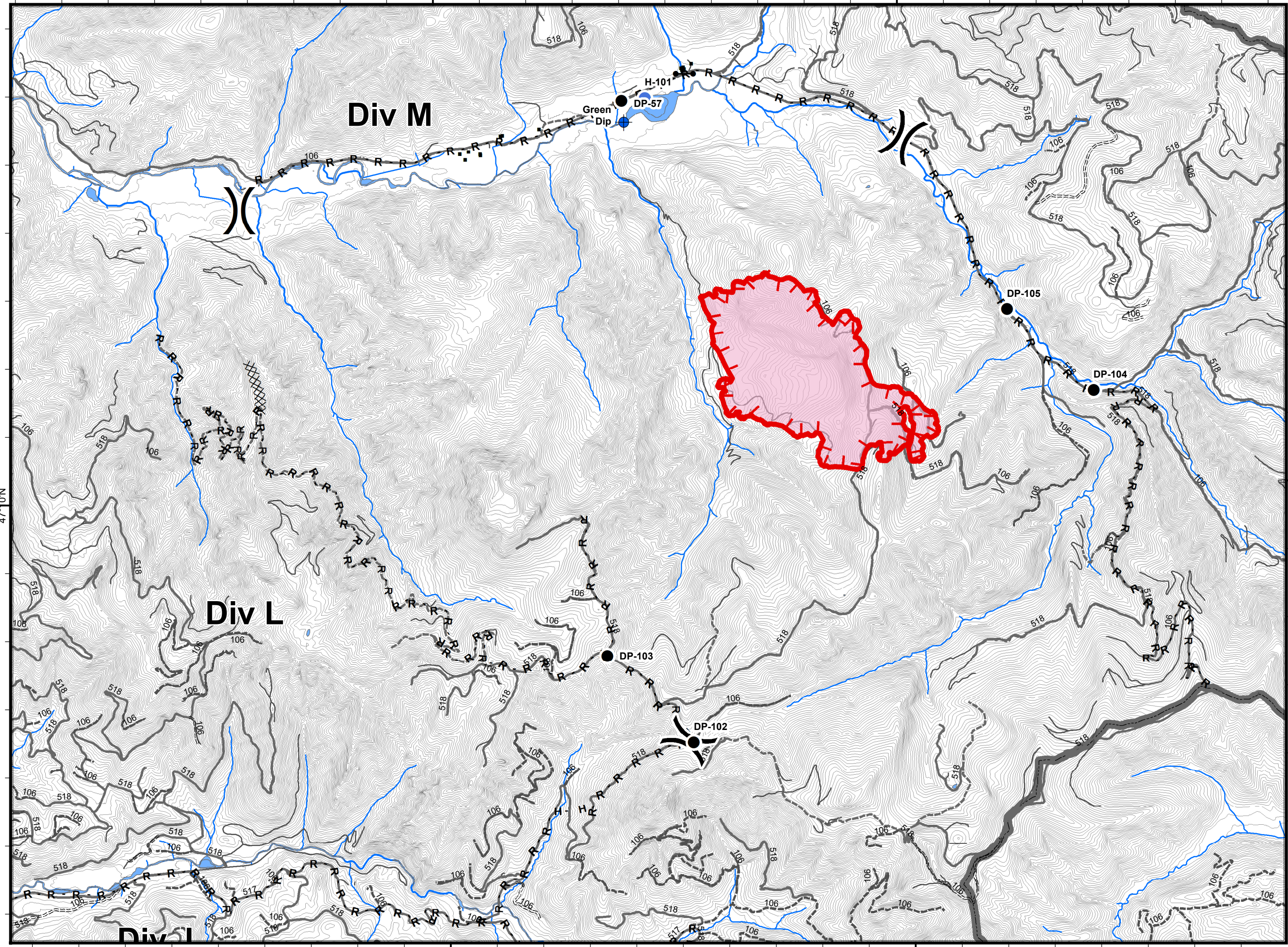
IAP Map 9/21/2017

52,056 Ac. Norse Peak
3,853 Ac. American
1,061 Ac. Sawmill

GIS Calculated 9/19/2017 @12:00



NIFC
Online Maps



- Dip Site
- Drop Point
- Gate
- Helispot
- Division Break



- Uncontrolled Fire Edge
- Completed Dozer Line
- Completed Hand Line
- Road as Completed Line
- Fire Perimeter
- Structure
- Administrative Boundary

47°10'N

47°10'N

121°0'W

121°25'W

