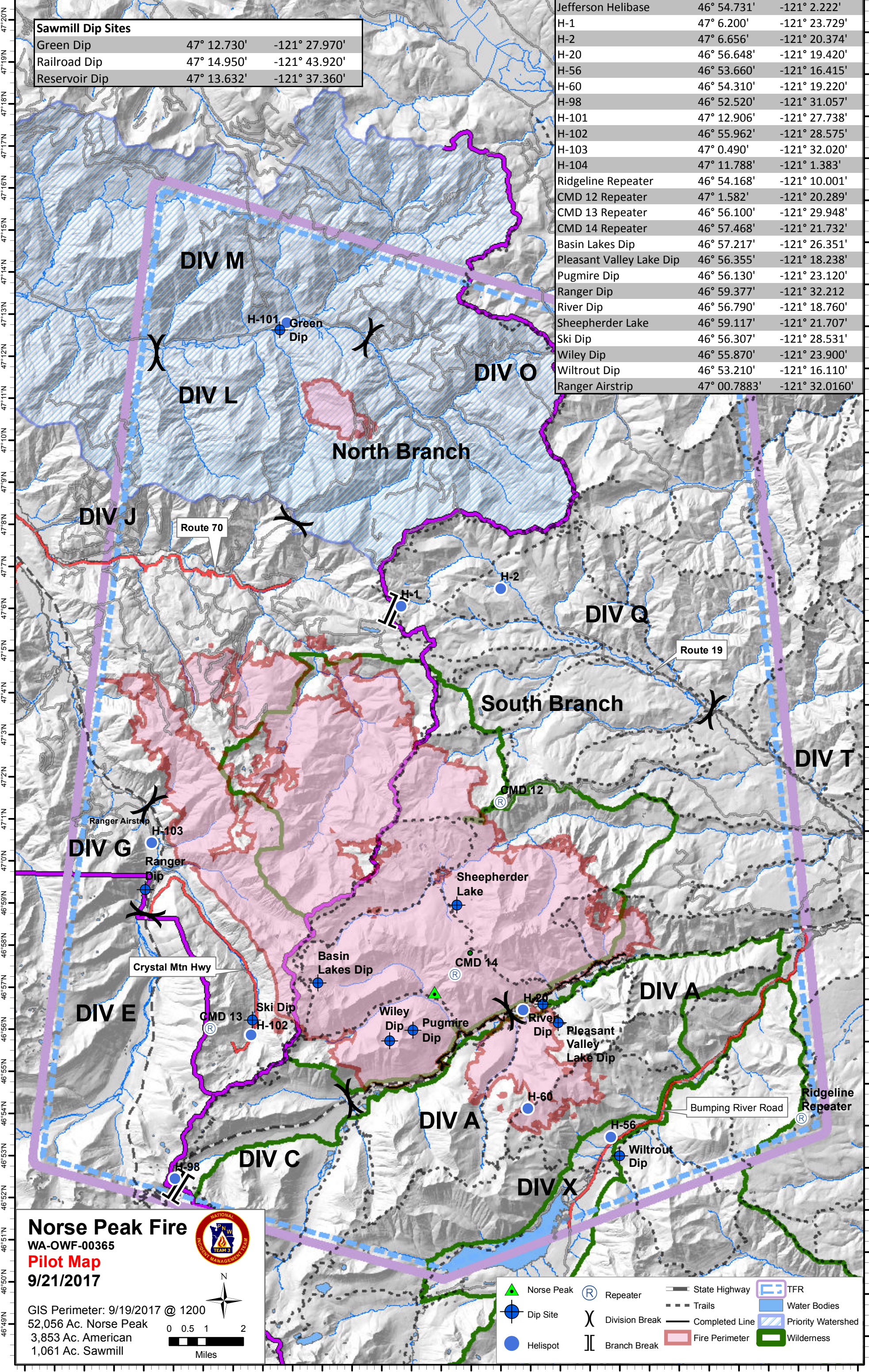


121°37'W 121°35'W 121°33'W 121°31'W 121°29'W 121°27'W 121°25'W 121°23'W 121°21'W 121°19'W 121°17'W 121°15'W 121°13'W 121°11'W 121°9'W

Sawmill Dip Sites		
Green Dip	47° 12.730'	-121° 27.970'
Railroad Dip	47° 14.950'	-121° 43.920'
Reservoir Dip	47° 13.632'	-121° 37.360'

Jefferson Helibase	46° 54.731'	-121° 2.222'
H-1	47° 6.200'	-121° 23.729'
H-2	47° 6.656'	-121° 20.374'
H-20	46° 56.648'	-121° 19.420'
H-56	46° 53.660'	-121° 16.415'
H-60	46° 54.310'	-121° 19.220'
H-98	46° 52.520'	-121° 31.057'
H-101	47° 12.906'	-121° 27.738'
H-102	46° 55.962'	-121° 28.575'
H-103	47° 0.490'	-121° 32.020'
H-104	47° 11.788'	-121° 1.383'
Ridgeline Repeater	46° 54.168'	-121° 10.001'
CMD 12 Repeater	47° 1.582'	-121° 20.289'
CMD 13 Repeater	46° 56.100'	-121° 29.948'
CMD 14 Repeater	46° 57.468'	-121° 21.732'
Basin Lakes Dip	46° 57.217'	-121° 26.351'
Pleasant Valley Lake Dip	46° 56.355'	-121° 18.238'
Pugmire Dip	46° 56.130'	-121° 23.120'
Ranger Dip	46° 59.377'	-121° 32.212'
River Dip	46° 56.790'	-121° 18.760'
Shepherd Lake	46° 59.117'	-121° 21.707'
Ski Dip	46° 56.307'	-121° 28.531'
Wiley Dip	46° 55.870'	-121° 23.900'
Wilttrout Dip	46° 53.210'	-121° 16.110'
Ranger Airstrip	47° 00.7883'	-121° 32.0160'



Norse Peak Fire
 WA-OWF-00365
Pilot Map
 9/21/2017

GIS Perimeter: 9/19/2017 @ 1200
 52,056 Ac. Norse Peak
 3,853 Ac. American
 1,061 Ac. Sawmill

Norse Peak	Dip Site	Helispot	Repeater	Division Break	Branch Break	State Highway	Trails	Completed Line	Fire Perimeter	TFR	Water Bodies	Priority Watershed	Wilderness
------------	----------	----------	----------	----------------	--------------	---------------	--------	----------------	----------------	-----	--------------	--------------------	------------

121°35'W 121°33'W 121°31'W 121°29'W 121°27'W 121°25'W 121°23'W 121°21'W 121°19'W 121°17'W 121°15'W 121°13'W 121°11'W 121°9'W 121°8'W