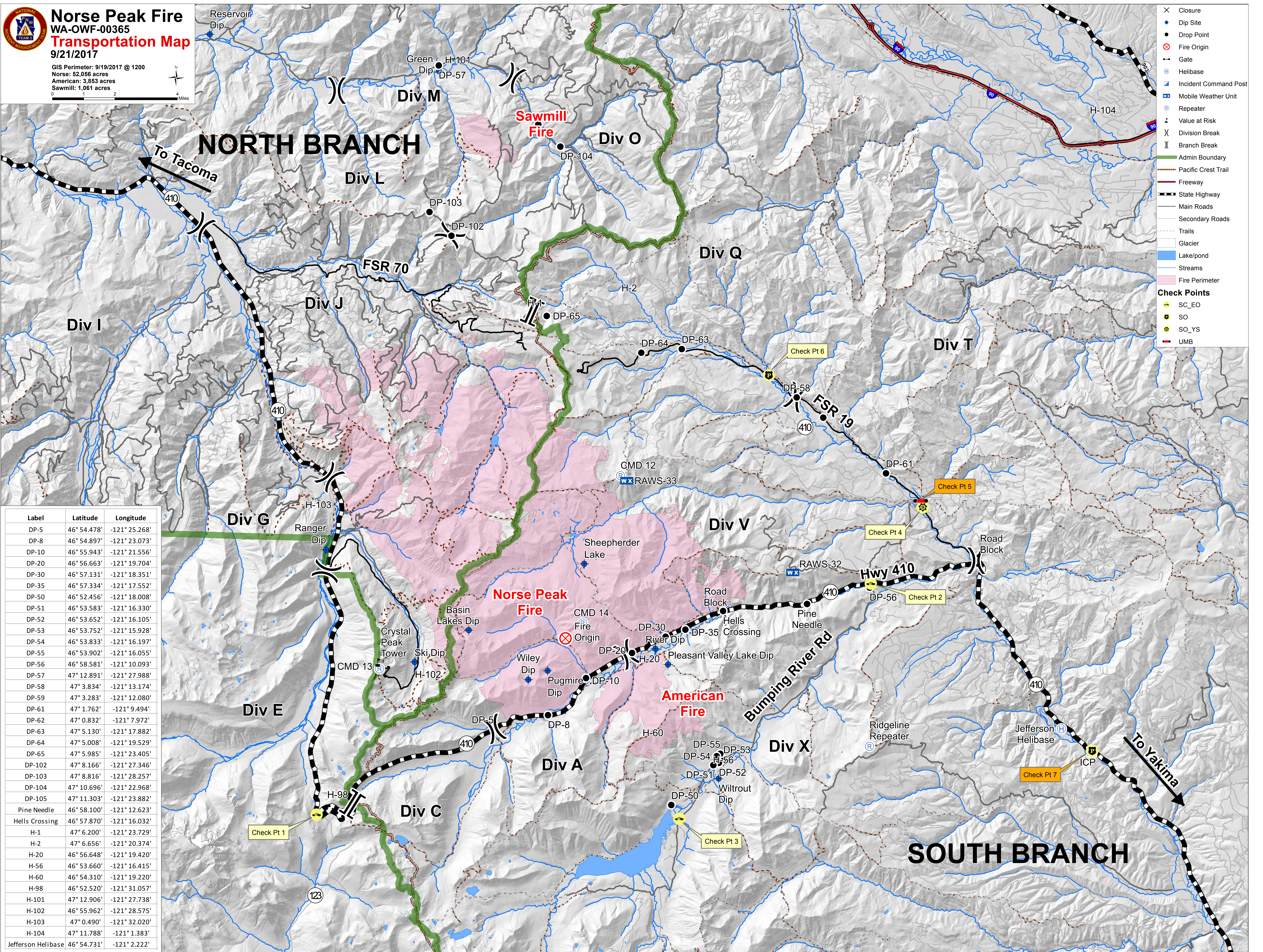




**Norse Peak Fire**  
 WA-OWF-00365  
**Transportation Map**  
 9/21/2017

GIS Perimeter: 9/19/2017 @ 1200  
 Norse: 52,056 acres  
 American: 3,853 acres  
 Sawmill: 1,061 acres



Label	Latitude	Longitude
DP-5	46° 54.478'	-121° 25.268'
DP-8	46° 54.897'	-121° 23.073'
DP-10	46° 55.943'	-121° 21.556'
DP-20	46° 56.663'	-121° 19.704'
DP-30	46° 57.131'	-121° 18.351'
DP-35	46° 57.334'	-121° 17.552'
DP-50	46° 52.456'	-121° 18.008'
DP-51	46° 53.583'	-121° 16.330'
DP-52	46° 53.652'	-121° 16.105'
DP-53	46° 53.752'	-121° 15.928'
DP-54	46° 53.833'	-121° 16.197'
DP-55	46° 53.902'	-121° 16.055'
DP-56	46° 58.581'	-121° 10.093'
DP-57	47° 12.891'	-121° 27.988'
DP-58	47° 3.834'	-121° 13.174'
DP-59	47° 3.283'	-121° 12.080'
DP-61	47° 1.762'	-121° 9.494'
DP-62	47° 0.832'	-121° 7.972'
DP-63	47° 5.130'	-121° 17.882'
DP-64	47° 5.008'	-121° 19.529'
DP-65	47° 5.985'	-121° 23.405'
DP-102	47° 8.166'	-121° 27.346'
DP-103	47° 8.816'	-121° 28.257'
DP-104	47° 10.696'	-121° 22.968'
DP-105	47° 11.303'	-121° 23.882'
Pine Needle	46° 58.100'	-121° 12.623'
Hells Crossing	46° 57.870'	-121° 16.032'
H-1	47° 6.200'	-121° 23.729'
H-2	47° 6.656'	-121° 20.374'
H-20	46° 56.648'	-121° 19.420'
H-56	46° 53.660'	-121° 16.415'
H-60	46° 54.310'	-121° 19.220'
H-98	46° 52.520'	-121° 31.057'
H-101	47° 12.906'	-121° 27.738'
H-102	46° 55.962'	-121° 28.575'
H-103	47° 0.490'	-121° 32.020'
H-104	47° 11.788'	-121° 1.383'
Jefferson Helibase	46° 54.731'	-121° 2.222'